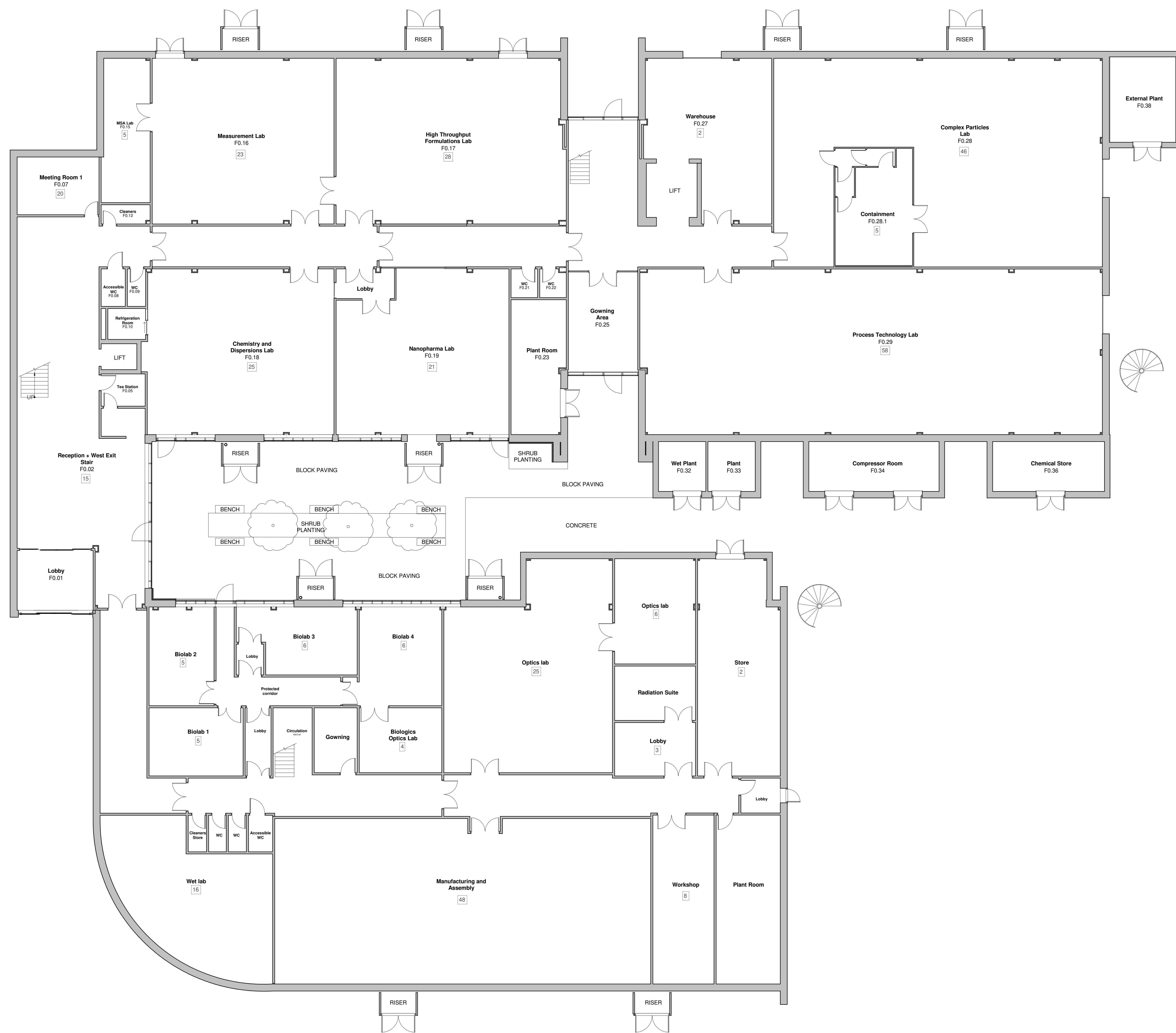


DATE	REVISION	REV	DR	CH
06.06.23	Preliminary Stage 3 Issue	P01	sm	sm
12.09.23	Issued for Planning Approval	P02	sm	sr

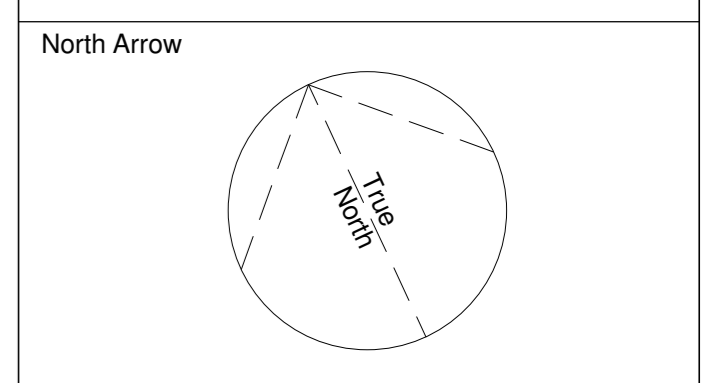


This drawing has been prepared solely for the use of CPI (Centre for Process Innovation) and there are no representations of any kind made by NORR Consultants Limited to any party with whom NORR Consultants Limited has not entered into a contract. This drawing must not be used, reproduced or revised without written permission.

This drawing shall not be used for construction purposes until a "As-APPROVED FOR STAGE X" status appears under the Sheet Status.

Constructors must only work to figured dimensions which are to be checked on site. Do not scale from hard copy drawings.

Keyplan



Consultants

NORR
 NORR Consultants Limited.
 An Ingenium International Company
 Percy House, 8th Floor Percy Street,
 Newcastle, NE1 4PW
 England, UK
 norr.com

Drawn	Date
SM	06.06.23
Checked	Date
SM	06.06.23

Scale: 1 : 100 @ A0

Client: CPI (Centre for Process Innovation)

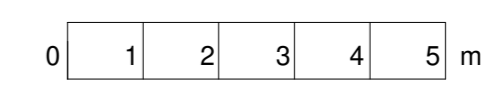
Project: ICDDC Intracellular Drug Delivery Centre

Drawing Title: Level 0 - Existing

Sheet Status: S3 - FOR REVIEW

Project No: JANC21-0110
 Drawing No: ICDDC-NOR-XX-00-DR-A-00010
 Rev: P02

LEVEL 00 - GA PLAN - EXISTING
 SCALE: 1 : 100



THIS PLAN IS PREPARED FROM RECORD DRAWINGS SUPPLIED BY CPI AND HAS NOT BEEN VERIFIED BY SITE MEASUREMENT OR SURVEY

WALLS, DOORS AND STAIRS AND SOME GLAZING IS INCLUDED - BUT NOT ALL EXISTING ELEMENTS (SUCH AS GLAZING) ARE SHOWN

[15] Depicts estimated room occupancies calculated from an assessment of approximate areas and application of Approved Document B volume 2 Table D1 Floor Space Factors

- EXISTING COURTYARD MATERIALS
- HARD SURFACING: CONCRETE BLOCK PAVING
 - IN-SITU CONCRETE WITH BRUSHED SURFACE
 - PRE-CAST CONCRETE FIN KERBS
 - BENCHES: RECYCLED PLASTIC
 - TREES: SILVER BIRCH
 - PLANTING: LOW-LEVEL SHRUBS AND GRASSES + GROUND COVER, WITH BARK MULCH

B512 - 24/06/2023 11:05am