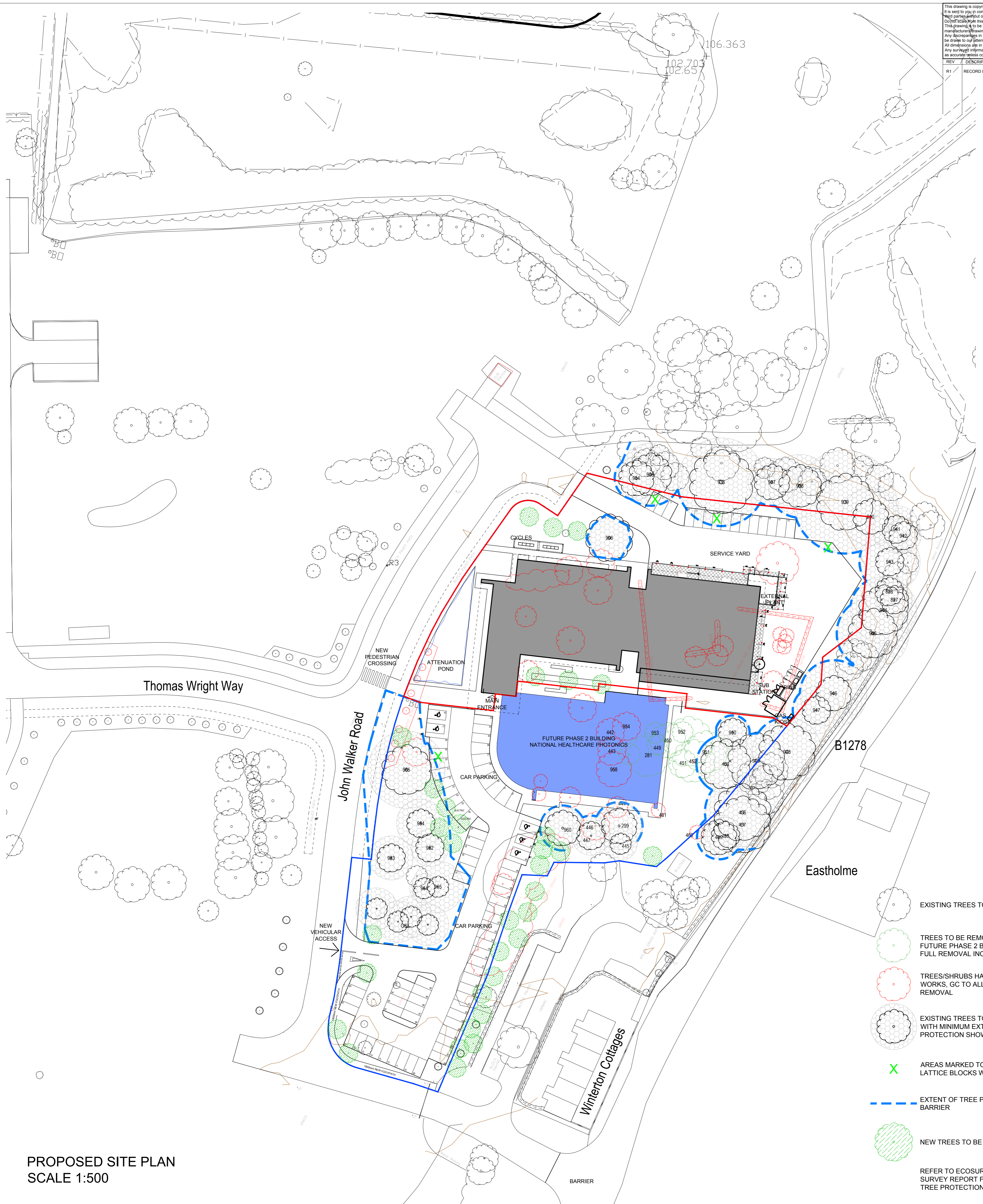
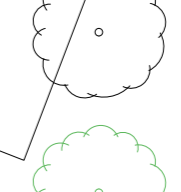
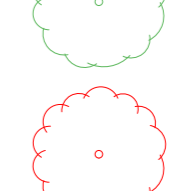
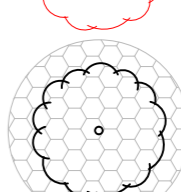
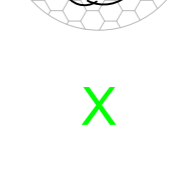


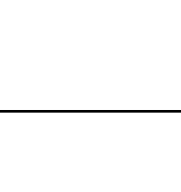


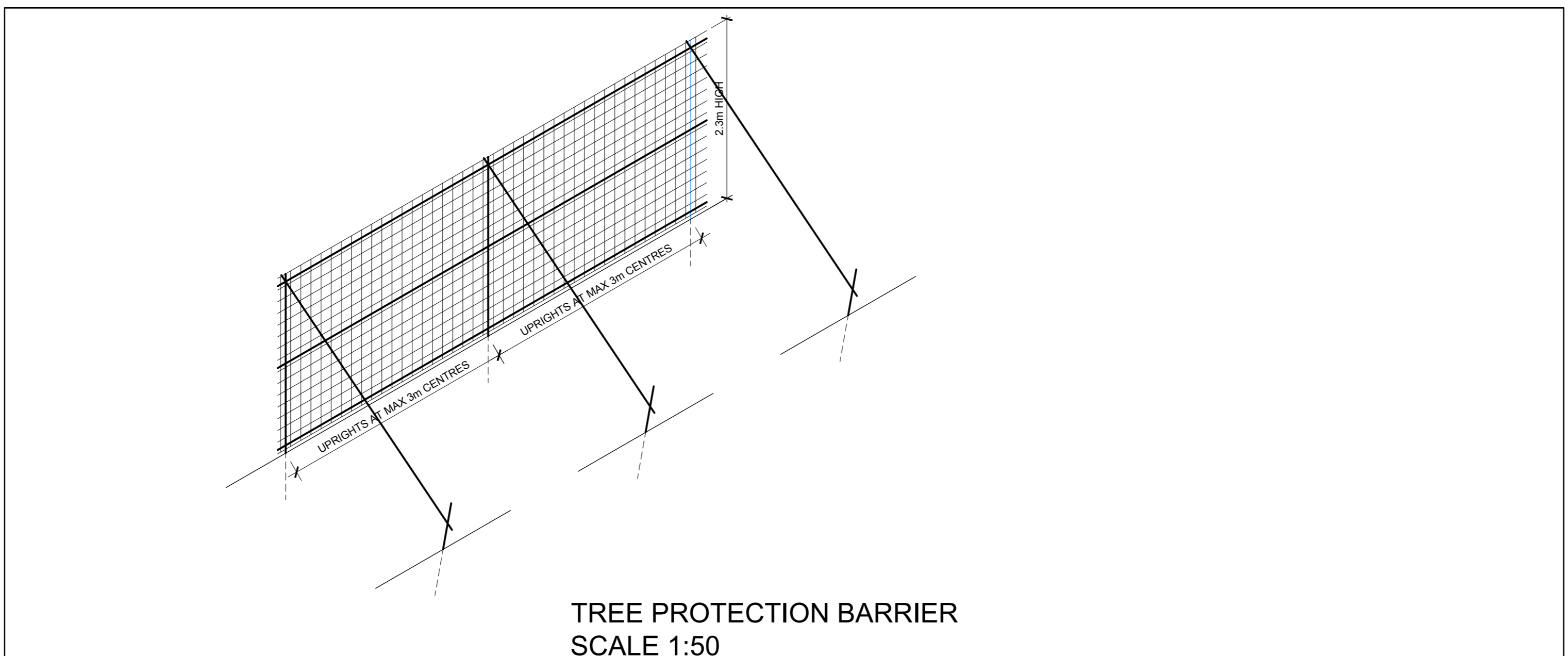
This drawing is copyright. It is sent to you in confidence and must not be reproduced or disclosed to any third party without our prior permission. This drawing is to be read in conjunction with all relevant consultants, specialist manufacturers drawings and specifications. Any discrepancies in dimensions or details on or between these drawings should be drawn to our attention. All dimensions are in millimetres unless noted otherwise. Any surveying information incorporated within this drawing cannot be guaranteed as accurate unless confirmed by fixed dimension.

REV	DESCRIPTION	BY	CHKD	DATE
R1	RECORD DRAWING	PAC	EP	24/11/2017



PROPOSED SITE PLAN
SCALE 1:500

-  EXISTING TREES TO BE RETAINED
 -  TREES TO BE REMOVED TO ACCOMMODATE FUTURE PHASE 2 BUILDING. GC TO ALLOW FOR FULL REMOVAL INCLUDING ROOT BALL
 -  TREES/SHRUBS HAVE BEEN REMOVED IN ENABLING WORKS. GC TO ALLOW FOR STUMP AND ROOT BALL REMOVAL
 -  EXISTING TREES TO BE RETAINED WITH MINIMUM EXTENT OF ROOT PROTECTION SHOWN
 -  AREAS MARKED TO HAVE CONCRETE LATTICE BLOCKS WITH GRAVEL INFILL
 -  EXTENT OF TREE PROTECTION BARRIER
 -  NEW TREES TO BE PLANTED
- REFER TO ECOSURV ARBORICULTURAL SURVEY REPORT FOR FULL DETAILS OF TREE PROTECTION ZONES



TREE PROTECTION BARRIER
SCALE 1:50

RECORD			
PROJECT:	CJF Plot 10 - NETPark SEDFIELD For CPI		
TITLE:	Proposed Tree Mitigation Works		
ORIGINATOR:	SCALE:	SHEET SIZE:	DATE:
PAC	1:500	A1	09/07/2015
PROJECT NUMBER:	DRAWING NUMBER:	REV:	
15008	1004	R1	
Howarth Litchfield Partnership			
CHARTERED ARCHITECTS		4 Old Elvet, Durham, DH1 3HL	
CHARTERED BUILDING SURVEYORS		T: Durham 0191 3849470	
DESIGN PROJECT MANAGERS		F: 0191 3841424	
INTERIOR DESIGN CONSULTANTS		16-25 Bastwick Street, London, EC1V 3PS	
W: www.howarthlitchfield.co.uk		T: 0207 2518955	
E: hlp@hlpdix.com		E: hlp@hlpdix.com	
© copyright and all intellectual property rights remain vested in Howarth Litchfield Partnership Limited			