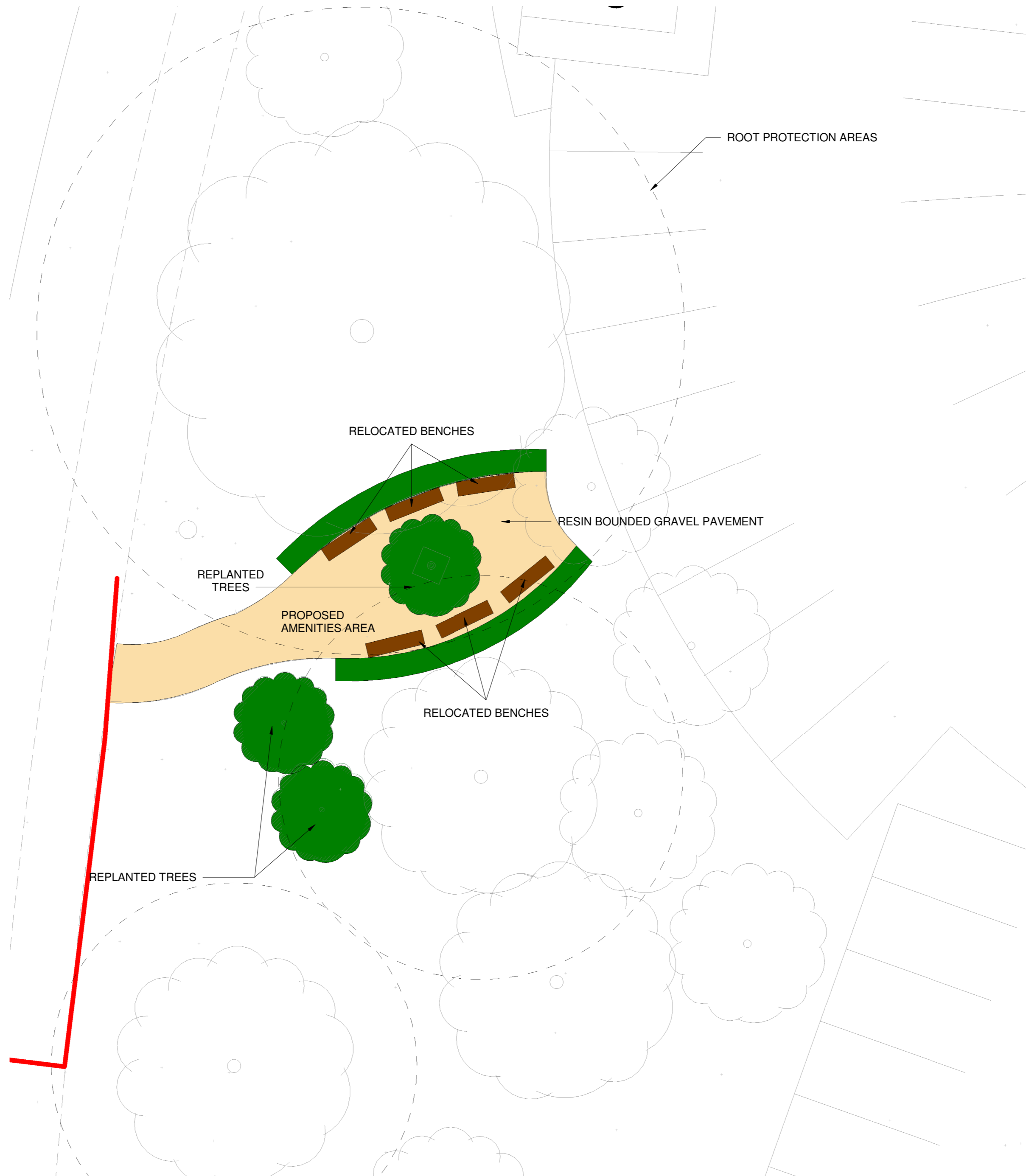




RESIN BOUNDED GRAVEL PAVEMENT



RELOCATED BENCHES



DATE	REVISION	REV	DR	CH
27.09.23	First issue for review and comment	P01	md	sm
12.12.23	Root protection areas shown	P02	sm	sr

This drawing has been prepared solely for the use of CPI (Centre for Process Innovation) and there are no representations of any kind made by NORR Consultants Limited to any party with whom NORR Consultants Limited has not entered into a contract. This drawing must not be used, reproduced or revised without written permission.

This drawing shall not be used for construction purposes until a "Ax - APPROVED FOR STAGE x" status appears under in Sheet Status.

Constructors must only work to figured dimensions which are to be checked on site. Do not scale from hard copy drawings.

North Arrow

**NORR**  
 NORR Consultants Limited.  
 An Ingenium International Company

SET OFFICE INFORMATION  
[www.norr.com](http://www.norr.com)

Drawn sm	Date 11.09.23
Checked rs	Date 11.09.23
Scale 1 : 100 @ A2	

Client  
 CPI (Centre for Process Innovation)

Project Name  
 ICDDC Intracellular Drug Delivery Centre

Drawing Title  
 SITE - PROPOSED EXTERNAL AREA

Sheet Status  
 S3 - FOR REVIEW

Project No.  
 IANC21-0110

Drawing No.  
 ICDDC-NOR-XX-ZZ-DR-A-90004

Rev.  
 P02

