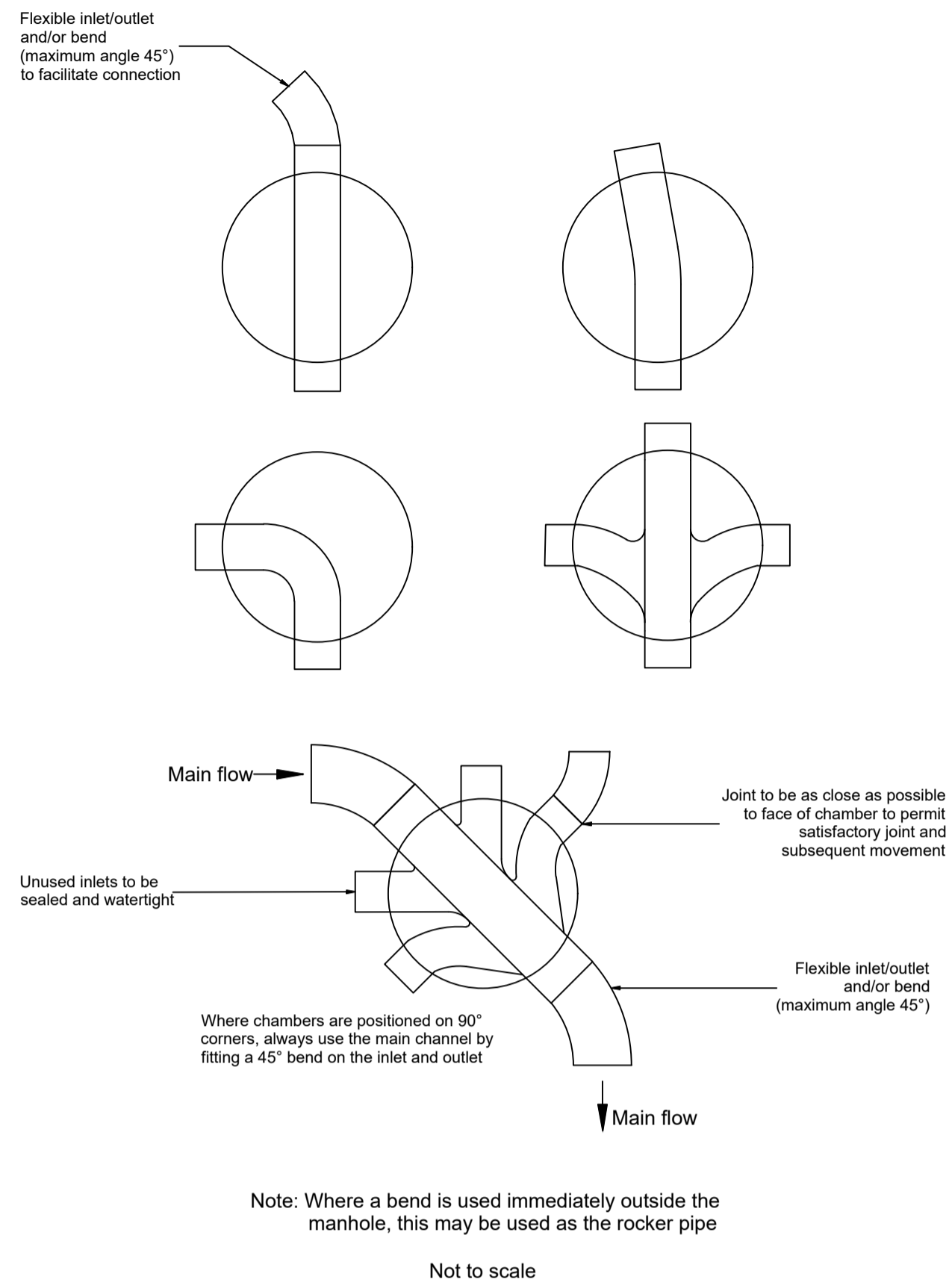
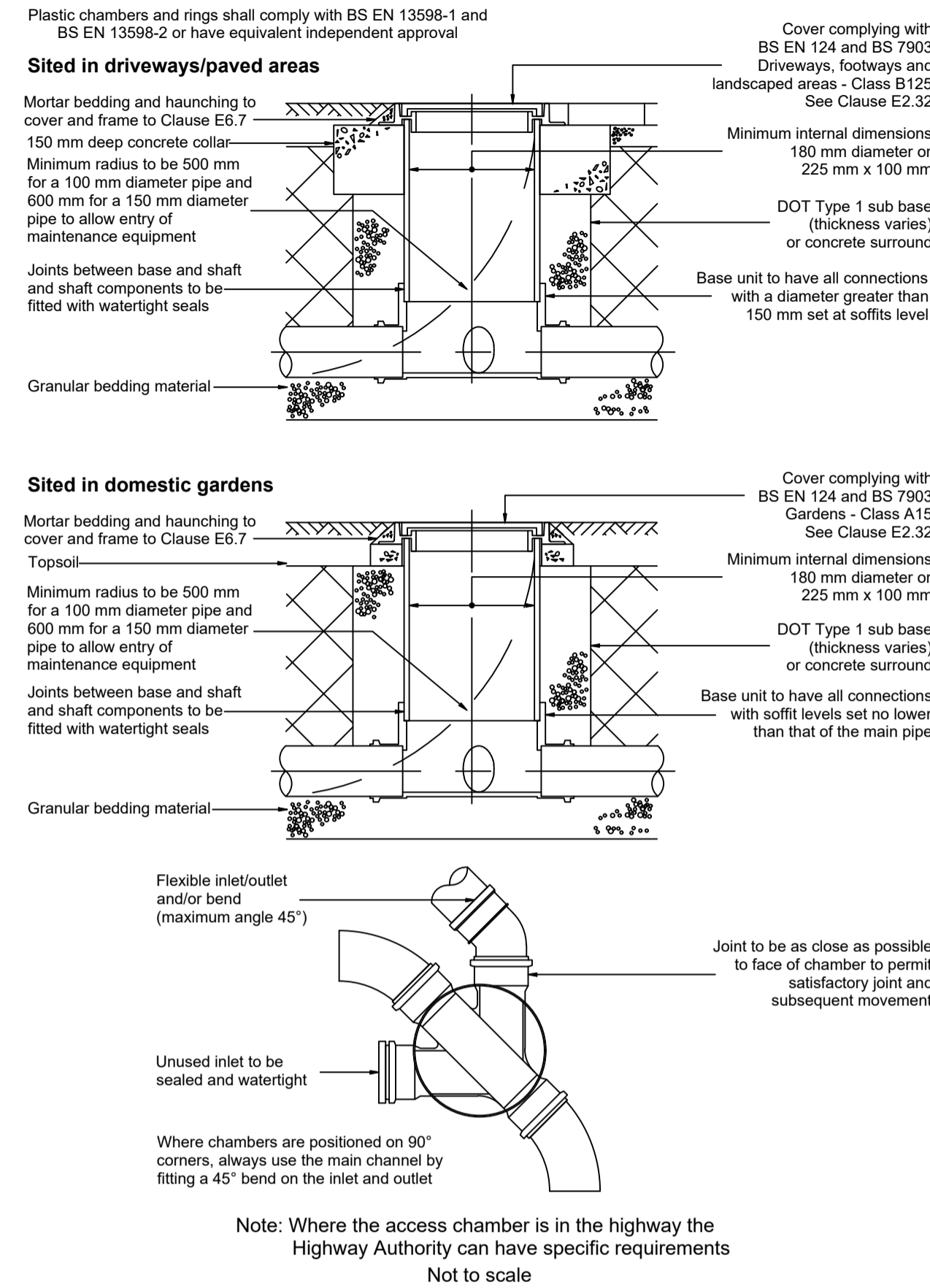


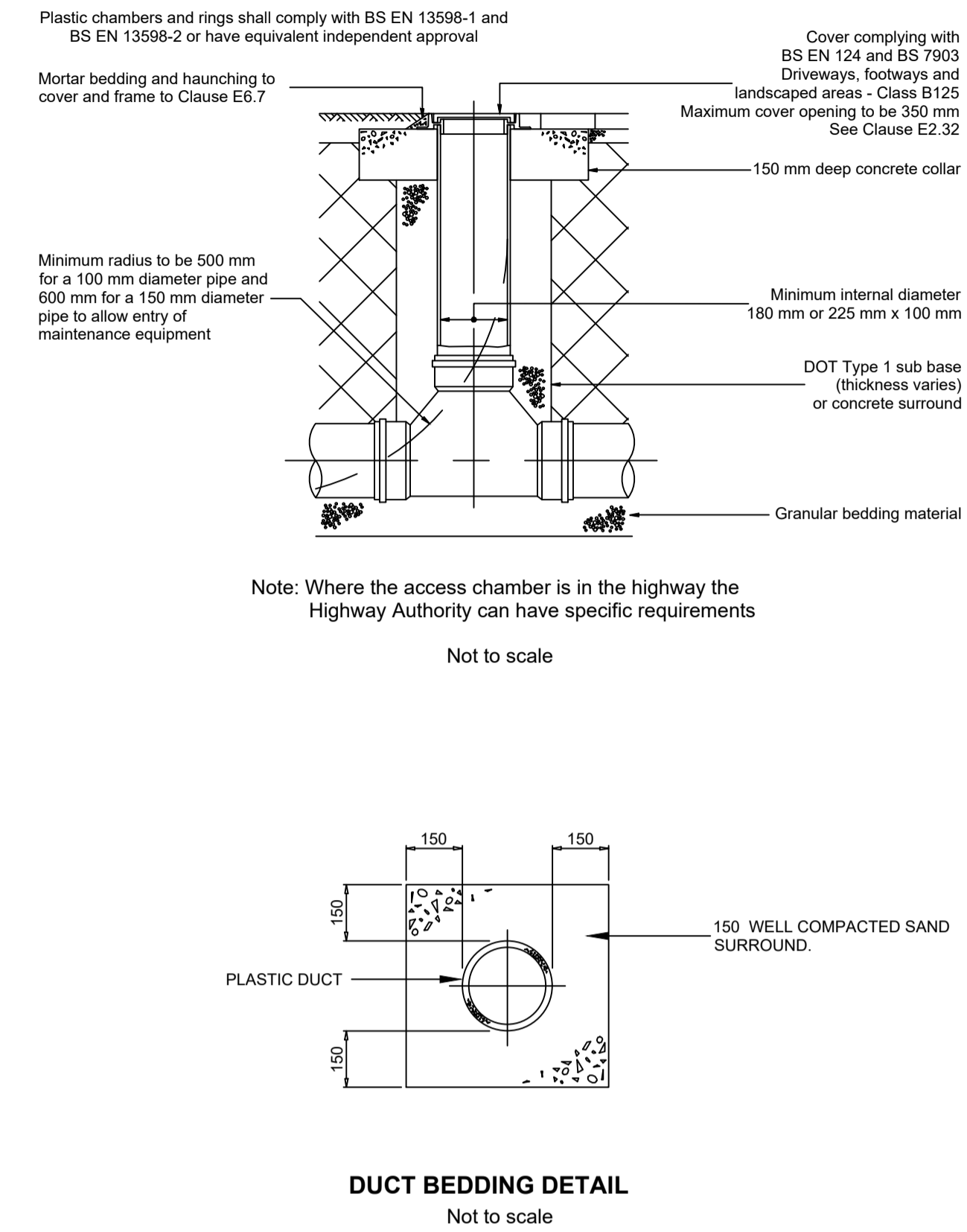
**FIGURE B.20**  
**ALTERNATIVE BASE LAYOUTS FOR TYPE 3 CHAMBERS**



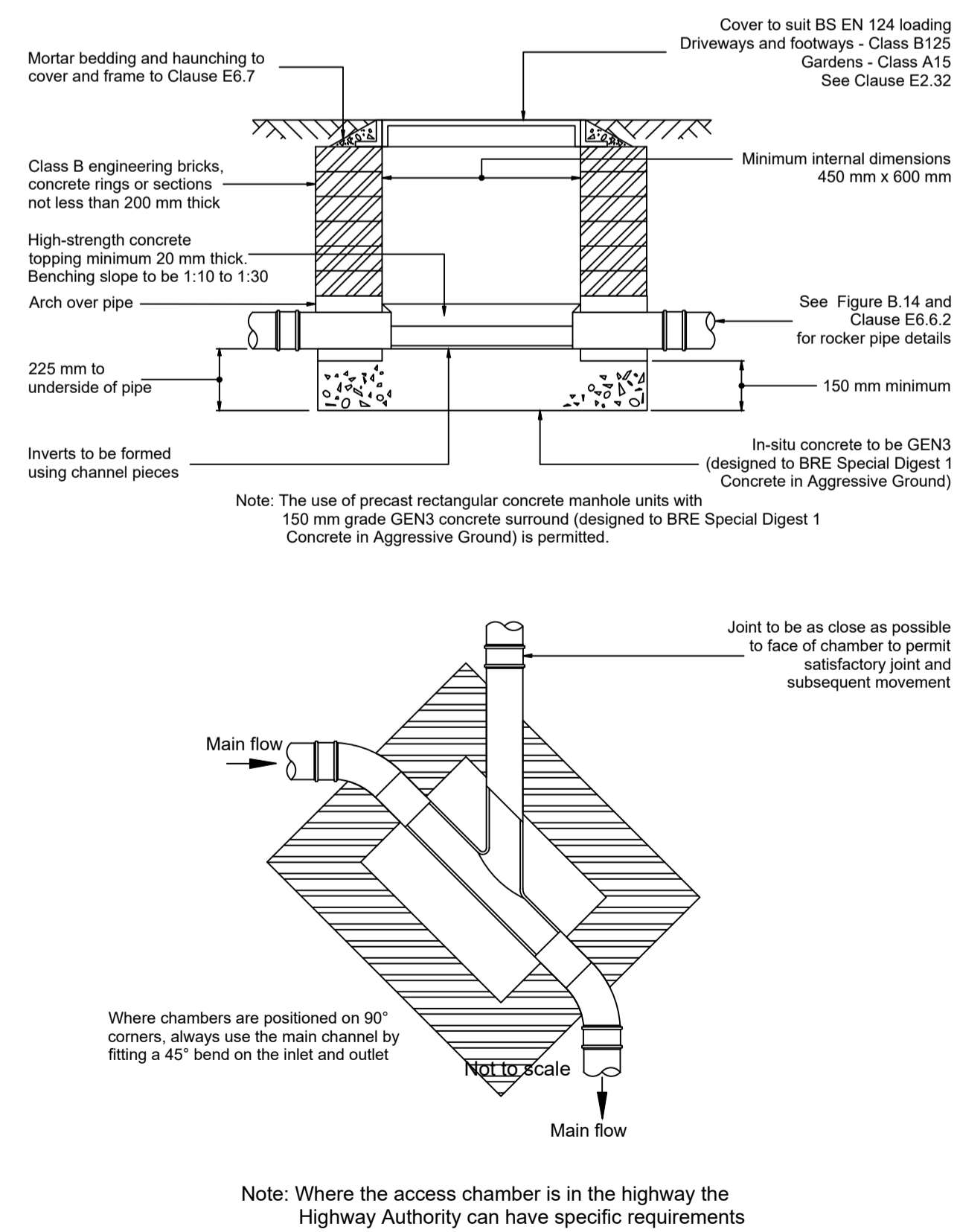
**FIGURE B.21**  
**TYPICAL INSPECTION CHAMBER DETAIL - TYPE 4 (Flexible material detail)**  
Maximum depth from cover level to soffit of pipe 2 m, non-entry



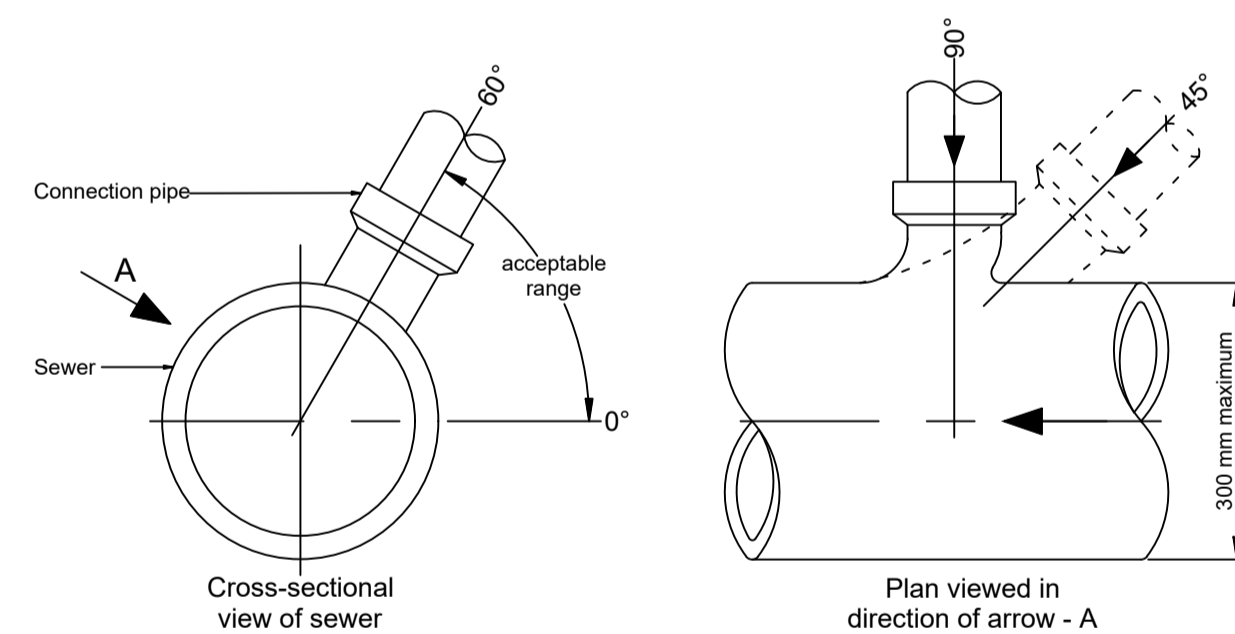
**FIGURE B.22**  
**TYPICAL INSPECTION CHAMBER DETAIL - TYPE 4 (Alternative construction detail)**  
Maximum depth from cover level to soffit of pipe 2 m, non-entry



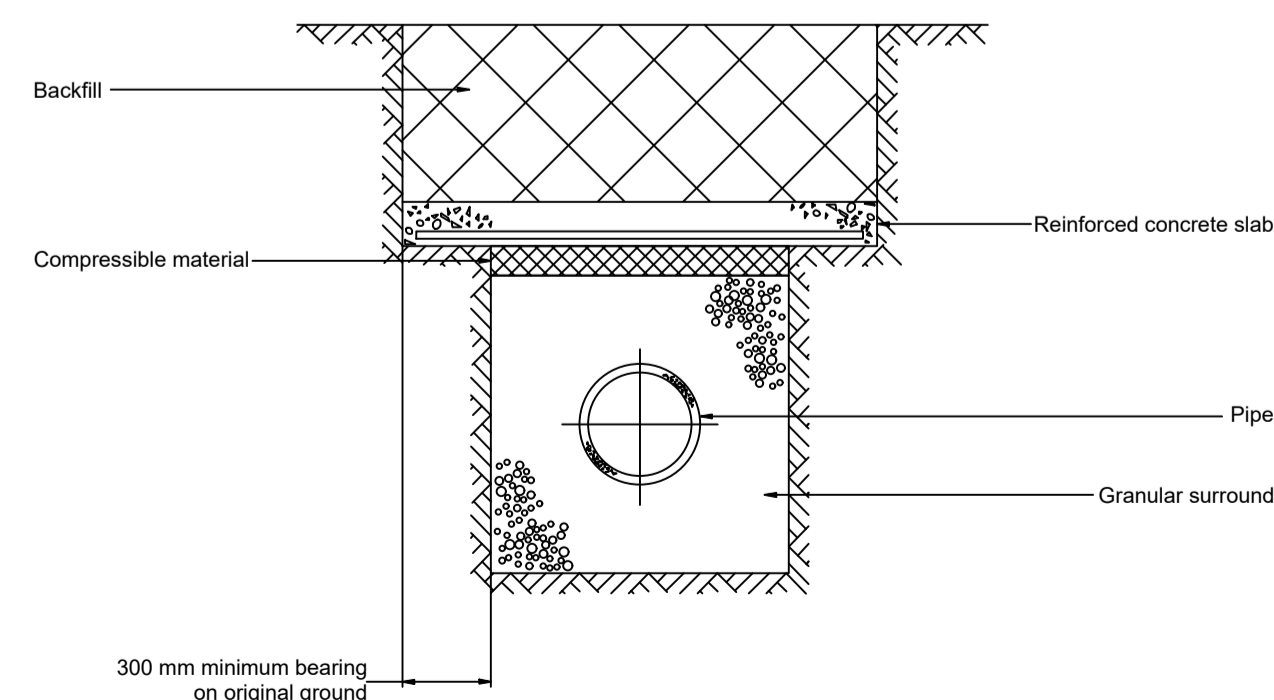
**FIGURE B.23**  
**TYPICAL INSPECTION CHAMBER DETAIL - TYPE 4 (Rigid material detail)**  
Maximum depth from cover level to soffit of pipe 1 m, non-entry



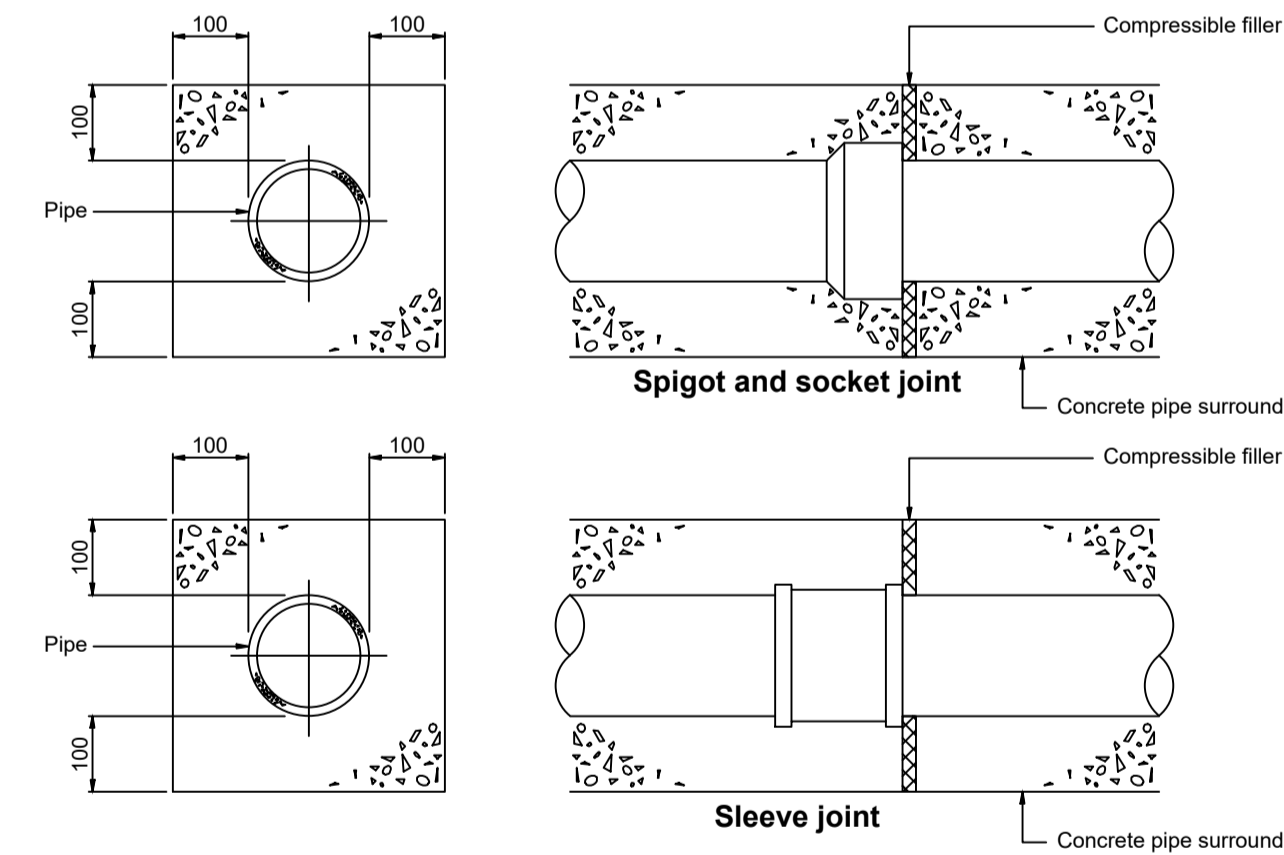
**FIGURE B.24**  
**CONNECTIONS TO SEWER**



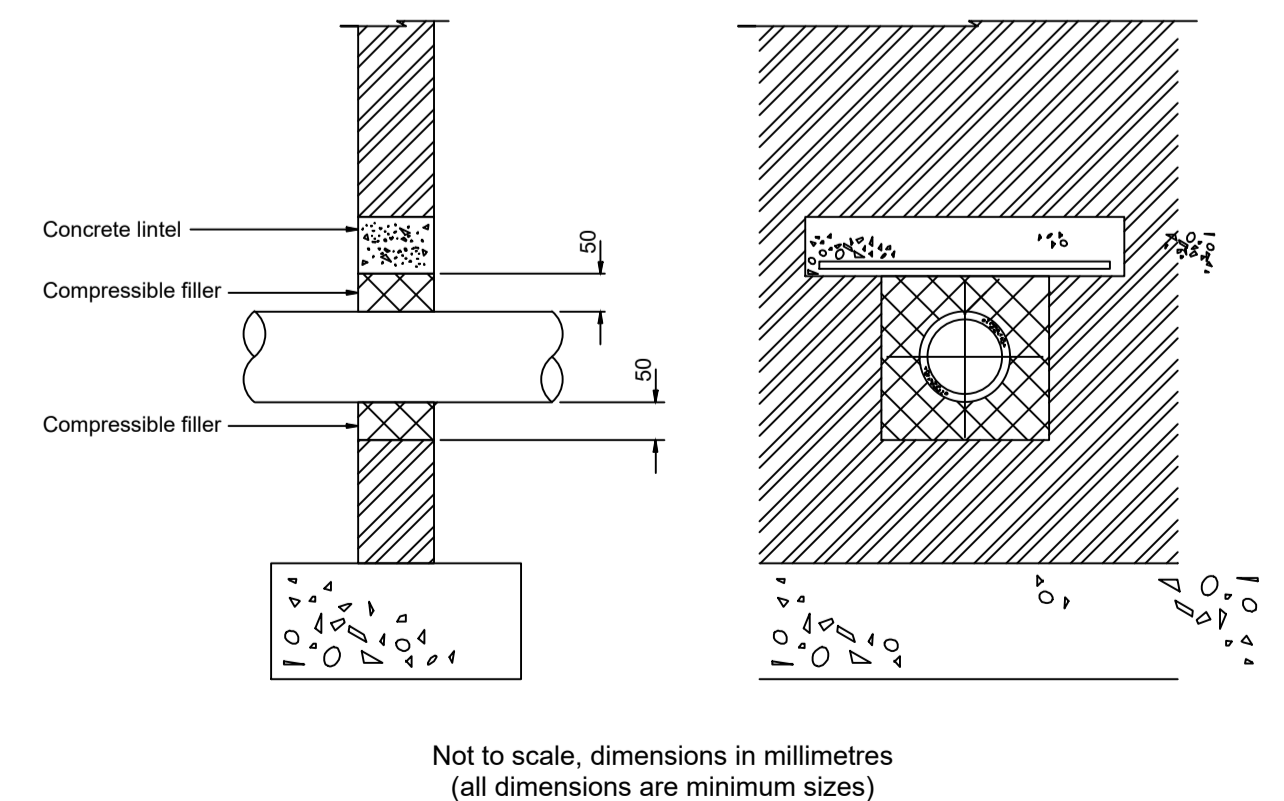
**FIGURE B.25**  
**PROTECTION OF PIPES LAID AT SHALLOW DEPTHS**



**FIGURE B.26**  
**JOINTS FOR CONCRETE ENCASED PIPES (LESS THAN 900mm COVER)**



**FIGURE B.27**  
**PROTECTION OF PIPES PENETRATING SINGLE LEAF BOUNDARY WALLS**



**NOTES:**

1. THIS DRAWING IS COPYRIGHT AND SHOULD NOT BE REPRODUCED WITHOUT APPROVAL.
2. THIS DRAWING TO BE READ IN CONJUNCTION WITH THE ARCHITECTS DRAWINGS. ANY DISCREPANCIES ARE TO BE BROUGHT TO THE ATTENTION OF BOTH PARTIES IMMEDIATELY.
3. ANY DIMENSIONS/LEVELS INDICATED 'ref.' REFER TO ASSUMED/EXISTING DIMENSIONS WHICH ARE TO BE SITE CHECKED PRIOR TO THE COMMENCEMENT OF ANY WORK.

**NOTE:**  
ALL ACCESS COVERS & FRAMES WITHIN THE BOATYARD AREA ARE TO BE GRADE F900.

**TENDER**

T1	TENDER	HDL/01.24	HDL/01.24	HDL/01.24
Version	Amendment	Revised by and date	Checked by and date	Approved by and date
ORIGINAL DRAWING SIZE - A1		X-REFS: .		
CAD REF.		.		

<p><b>HAMIL DAVIES LIMITED</b> Consulting Civil and Structural Engineers</p>	Client	COWES HARBOUR COMMISSION		
	Project	KINGSTON WHARF, EAST COWES, IOW		
	Drawing Title	BOATYARD DRAINAGE DETAILS - SHEET 4		
	Purpose	TENDER	Drawn HDL	Scale NTS
Issuing Office	SWANMORE	Designed	Drawn	Version
Telephone	01489 893 596	Drawing Number	23-4162-2154	T1