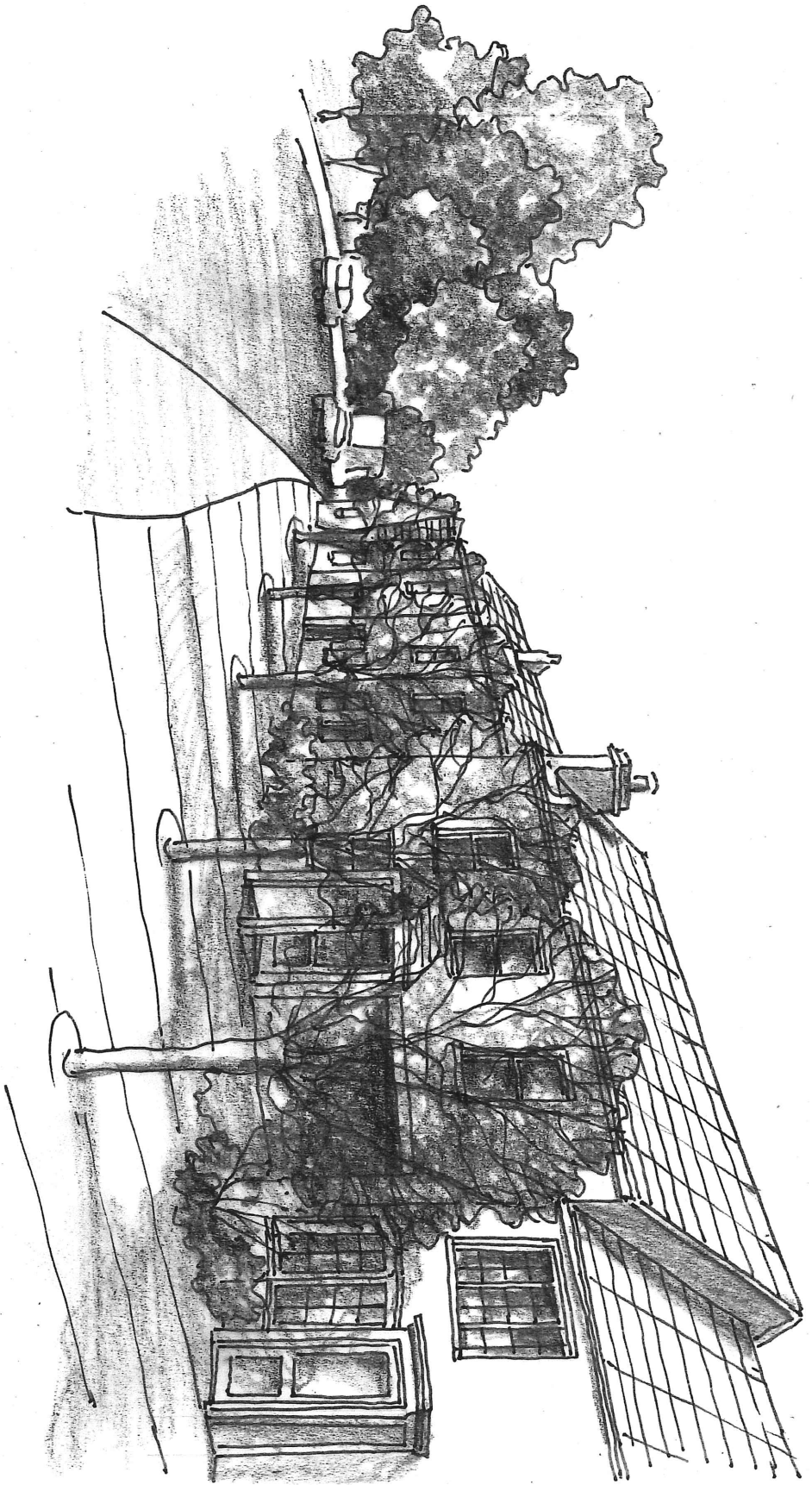
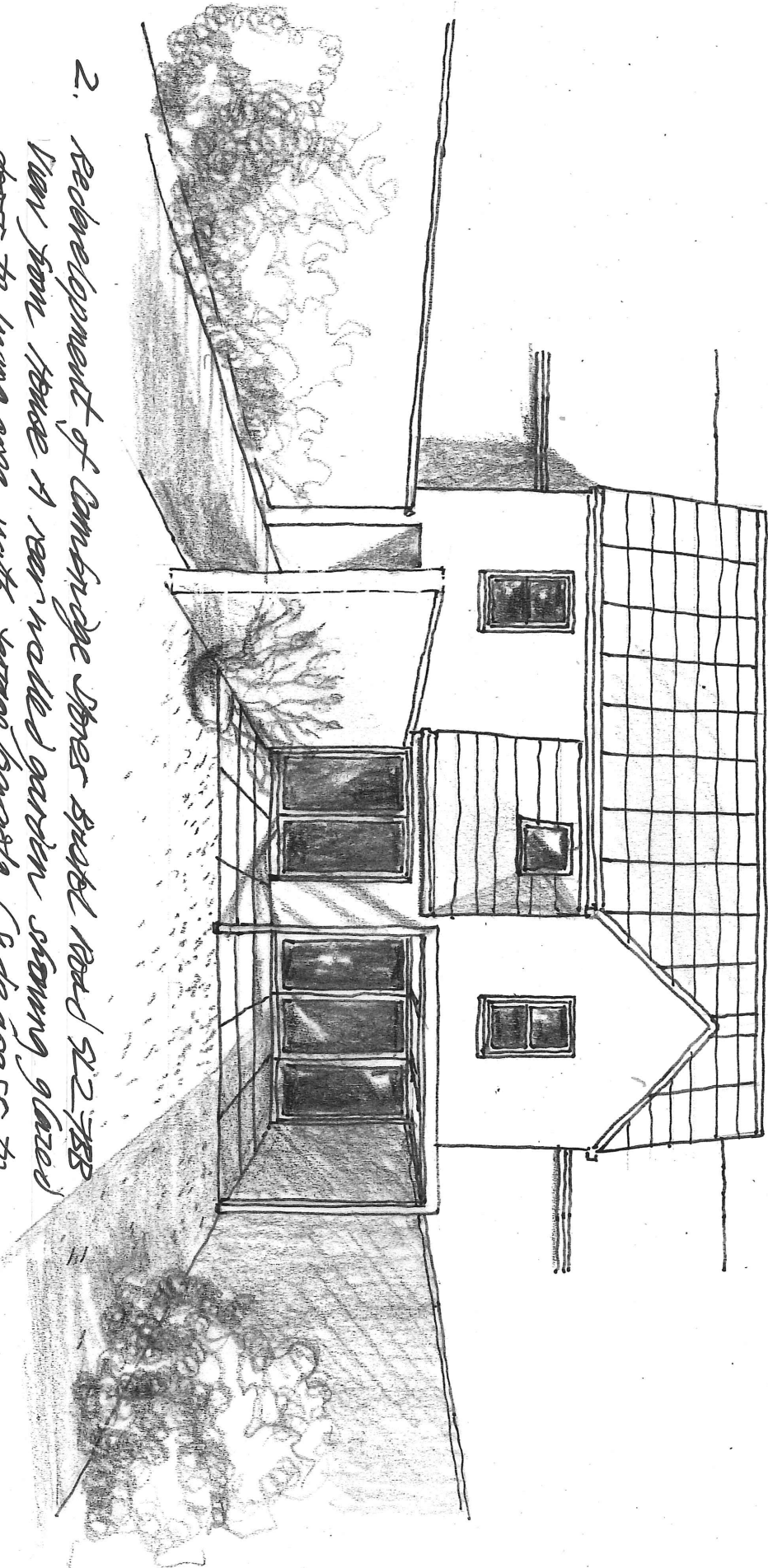


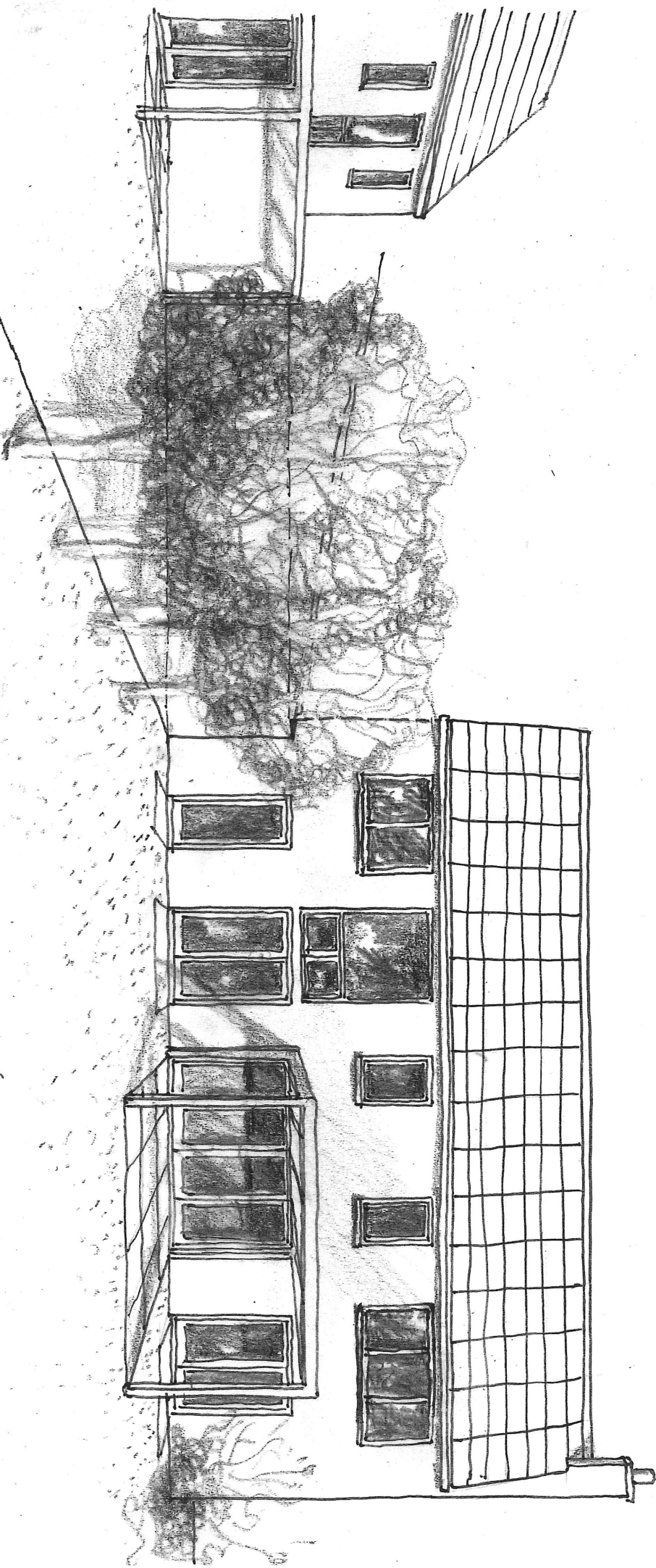
1. Redevelopment of Cambridge Jones Street Road SL 2788
New seating with along Street Road showing new facade
and widened road forecourt with parallel car parking



2. Redevelopment of Cambridge Street Street Road S22 788
View from House A rear walled garden showing glazed
doors to wing area with terrace/pavement (side access to
houses B & C in large garden to west



3. Redevelopment of Cambridge Street Bristol Road GL2 7BB
View from walkway garden of House B showing pergola and
terrace to living area, separate garden and House C (to left)



4. Redevelopment of Cambridge Street, Bristol Road SL2 7BB
View of House C from walled garden showing terrace and
pergola, with house entry at communal forecourt (to right)

