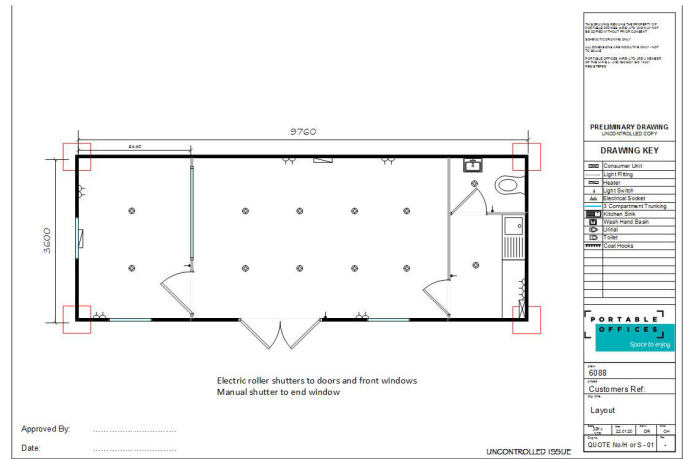


Unit Description

32ft x 12ft Sales & Marketing Suite - Complete with WC, Kitchenette, Closing Office, Electric Roller Shutters to Doors & Front Windows, Manual Fold Out Shutters to Window, Heating, Lighting and Electric Points

For more information call freephone
0800 169 4288 or visit www.portableoffices.co.uk



Unit Ref:	6088
Unit Type:	32ft Sales and Marketing Suite - Energy Saver
Unit Length:	32.00
Unit Width:	12.00
Unit Colour:	White
Unit Trim:	White
Finish:	Steel
Layout:	Partitioned
Bays:	1
Wet Facilities:	Toilet
Canteen:	Kitchenette - partitioned off
Glazed:	Double Glazed

0800 169 4288
www.portableoffices.co.uk