

Our ref: \20240107\Kincardine & Mearns\APP_2023_2334



Development Management
Planning & Economy
Aberdeenshire Council

NESBReC
Environment & Sustainability
Aberdeenshire Council
Woodhill House,
Westburn Road
Aberdeen, AB16 5GB
nesbrec@aberdeenshire.gov.uk

9 January 2024

Dear Planning Officer

NESBREC Data Search Report

Planning Ref: APP/2023/2334
Proposal: Erection of Single Wind Turbine (Height to Hub 50m, Height to Tip 76m), Associated Infrastructure and Formation of Access Track
Address: Site To The North Of Glensaugh Farm, Fettercairn, Laurencekirk, Aberdeenshire, AB30 1HB
Grid Reference: NO6758179347

NESBReC has provided this report based on the biological data that it holds in the NESBReC database. A list of all the datasets used in the search process can be obtained directly from NESBReC, and can be summarised as designated, notable and invasive species, protected areas and habitat surveys. The search covers the area of the site plus a 100m radius from the site boundary. Please read the NOTES section below for further details about this report. Please note, NESBReC is solely the provider of data and cannot advise on individual planning applications.

Results Summary - 100m radius search – all datasets:

Dataset	Interest
Bats	Common Pipistrelle (<i>Pipistrellus pipistrellus</i>) Daubenton's Bat (<i>Myotis daubentonii</i>) Pipistrelle Bat species (<i>Pipistrellus</i>) Soprano Pipistrelle (<i>Pipistrellus pygmaeus</i>)
Designated Species	European Protected Species Common Pipistrelle (<i>Pipistrellus pipistrellus</i>) Daubenton's Bat (<i>Myotis daubentonii</i>) Pipistrelle Bat species (<i>Pipistrellus</i>) Soprano Pipistrelle (<i>Pipistrellus pygmaeus</i>) Protection of Badgers Act Eurasian Badger (<i>Meles meles</i>) ANNEX 1 Red Kite (<i>Milvus milvus</i>) ANNEX 2.1 Snipe (<i>Gallinago gallinago</i>) UK BAP

	<p>Eurasian Red Squirrel (<i>Sciurus vulgaris</i>) Mountain Hare (<i>Lepus timidus</i>) Red Grouse (<i>Lagopus lagopus</i>) Anomalous (<i>Stilbia anomala</i>) Autumnal Rustic (<i>Eugnorisma glareosa</i>) Brindled Ochre (<i>Dasypolia templi</i>) Broom Moth (<i>Ceramica pisi</i>) Brown-spot Pinion (<i>Agrochola litura</i>) Centre-barred Sallow (<i>Atethmia centrago</i>) Crescent (<i>Celaena leucostigma</i>) Dark Brocade (<i>Mniotype adusta</i>) Dusky Brocade (<i>Apamea remissa</i>) Ear Moth (<i>Amphipoea oculea</i>) Flounced Chestnut (<i>Agrochola helvola</i>) Garden Dart (<i>Euxoa nigricans</i>) Garden Tiger (<i>Arctia caja</i>) Ghost Moth (<i>Hepialus humuli</i>) Grass Rivulet (<i>Perizoma albulata</i>) Green-brindled Crescent (<i>Allophyes oxyacanthae</i>) Grey Dagger (<i>Acronicta psi</i>) Grey Mountain Carpet (<i>Entephria caesiata</i>) Haworth's Minor (<i>Celaena haworthii</i>) Large Wainscot (<i>Rhizedra lutosa</i>) Latticed Heath (<i>Chiasmia clathrata</i>) Minor Shoulder-knot (<i>Brachylomia viminalis</i>) Mottled Rustic (<i>Caradrina morpheus</i>) Mouse Moth (<i>Amphipyra tragopoginis</i>) Neglected Rustic (<i>Xestia castanea</i>) Pale Eggar (<i>Trichiura crataegi</i>) Red Carpet (<i>Xanthorhoe decoloraria</i>) Rosy Rustic (<i>Hydraecia micacea</i>) Sallow (<i>Cirrhia icteritia</i>) Shaded Broad-bar (<i>Scotopteryx chenopodiata</i>) Shoulder-striped Wainscot (<i>Leucania comma</i>) Small Phoenix (<i>Ecliptopera silaceata</i>) Small Square-spot (<i>Diarsia rubi</i>) Streak (<i>Chesias legatella</i>) White Ermine (<i>Spilosoma lubricipeda</i>) White-line Dart (<i>Euxoa tritici</i>) SBL S5 Mossy Saxifrage (<i>Saxifraga hypnoides</i>)</p>
NE LBAP Locally Important Species	Quillwort (<i>Isoetes lacustris</i>)
Invasive Non-Native Plant Species	Rhododendron (<i>Rhododendron ponticum</i>)
Integrated Habitat System LNCS 2010-12	AS0 - Standing open water and canals BRZ - Other continuous bracken CRO - Arable and horticulture EM31 - Fens [lowland] EM4 - Purple moor grass and rush pastures

	GA1 - Lowland dry acid grassland GNZ - Other neutral grassland MH1 - Montane heaths WB1 - Mixed woodland WB34Z - Other wet woodland WB3Z - Other broadleaved woodland WCZ - Other coniferous woodland
Aberdeenshire Local Nature Conservation Sites	Strathfinella : Deeply weathered granite and an extensive network of fluvio-glacial meltwater channels. Highland Boundary Fault Complex. Slack of Birnie of botanical interest. The loch at Glensaugh supports good aquatic vegetation.

Results Summary - 1km radius search for Wind Turbine applications - Protected & Notable species:

Dataset	Interest
Designated Species	<p>European Protected Species Brown Long-eared Bat (<i>Plecotus auritus</i>) Common Pipistrelle (<i>Pipistrellus pipistrellus</i>) Daubenton's Bat (<i>Myotis daubentonii</i>) Pipistrelle Bat species (<i>Pipistrellus</i>) Soprano Pipistrelle (<i>Pipistrellus pygmaeus</i>) Wildcat (<i>Felis silvestris</i>)</p> <p>Protection of Badgers Act Eurasian Badger (<i>Meles meles</i>)</p> <p>ANNEX 1 Red Kite (<i>Milvus milvus</i>) Short-eared Owl (<i>Asio flammeus</i>) White-tailed Eagle (<i>Haliaeetus albicilla</i>)</p> <p>ANNEX 2.1 Grey Partridge (<i>Perdix perdix</i>) Snipe (<i>Gallinago gallinago</i>)</p> <p>ANNEX 2.2 Black-headed Gull (<i>Chroicocephalus ridibundus</i>) Redwing (<i>Turdus iliacus</i>)</p> <p>UK BAP Common Lizard (<i>Zootoca vivipara</i>) Eurasian Red Squirrel (<i>Sciurus vulgaris</i>) Mountain Hare (<i>Lepus timidus</i>) Pine Marten (<i>Martes martes</i>) Bullfinch (<i>Pyrrhula pyrrhula</i>) Cuckoo (<i>Cuculus canorus</i>) Curlew (<i>Numenius arquata</i>) Herring Gull (<i>Larus argentatus</i>) House Sparrow (<i>Passer domesticus</i>) Lapwing (<i>Vanellus vanellus</i>) Lesser Redpoll (<i>Acanthis cabaret</i>) Linnet (<i>Linaria cannabina</i>) Red Grouse (<i>Lagopus lagopus</i> subsp. <i>scotica</i>) Red Grouse (<i>Lagopus lagopus</i>)</p>

Reed Bunting (*Emberiza schoeniclus*)
Skylark (*Alauda arvensis*)
Song Thrush (*Turdus philomelos*)
Spotted Flycatcher (*Muscicapa striata*)
Starling (*Sturnus vulgaris*)
Tree Pipit (*Anthus trivialis*)
Yellowhammer (*Emberiza citrinella*)
Anomalous (*Stilbia anomala*)
Autumnal Rustic (*Eugnorisma glareosa*)
Brindled Ochre (*Dasypolia templi*)
Broom Moth (*Ceramica pisi*)
Brown-spot Pinion (*Agrochola litura*)
Centre-barred Sallow (*Atethmia centrago*)
Crescent (*Celaena leucostigma*)
Dark Brocade (*Mniotype adusta*)
Dusky Brocade (*Apamea remissa*)
Ear Moth (*Amphipoea oculea*)
Flounced Chestnut (*Agrochola helvola*)
Garden Dart (*Euxoa nigricans*)
Garden Tiger (*Arctia caja*)
Ghost Moth (*Hepialus humuli*)
Grass Rivulet (*Perizoma albulata*)
Green-brindled Crescent (*Allophyes oxyacanthae*)
Grey Dagger (*Acronicta psi*)
Grey Mountain Carpet (*Entephria caesiata*)
Haworth's Minor (*Celaena haworthii*)
Large Wainscot (*Rhizedra lutosa*)
Latticed Heath (*Chiasmia clathrata*)
Minor Shoulder-knot (*Brachylomia viminalis*)
Mottled Rustic (*Caradrina morpheus*)
Mouse Moth (*Amphipyra tragopoginis*)
Neglected Rustic (*Xestia castanea*)
Pale Eggar (*Trichiura crataegi*)
Red Carpet (*Xanthorhoe decoloraria*)
Rosy Minor (*Litoligia literosa*)
Rosy Rustic (*Hydraecia micacea*)
Sallow (*Cirrhia icteritia*)
Shaded Broad-bar (*Scotopteryx chenopodiata*)
Shoulder-striped Wainscot (*Leucania comma*)
Small Heath (*Coenonympha pamphilus*)
Small Pearl-bordered Fritillary (*Boloria selene*)
Small Phoenix (*Ecliptopera silaceata*)
Small Square-spot (*Diarsia rubi*)
Streak (*Chesias legatella*)
White Ermine (*Spilosoma lubricipeda*)
White-line Dart (*Euxoa tritici*)
SBL S3 Cercyon (*Cercyon melanocephalus*) (*Cercyon* (*Cercyon*)
melanocephalus)

SBL S3

	<p>Megasternum concinnum (Megasternum concinnum) Sphaeridium scarabaeoides (Sphaeridium scarabaeoides) SBL S5 Kestrel (Falco tinnunculus) Siskin (Spinus spinus) Swift (Apus apus) Mossy Saxifrage (Saxifraga hypnoides) Other Notable Species Goshawk (Accipiter gentilis)</p>
NE LBAP Locally Important Species	<p>Common Yellow-sedge (Carex viridula subsp. oedocarpa) Mountain Male-fern (Dryopteris oreades) Parsley Fern (Cryptogramma crispera) Quillwort (Isoetes lacustris)</p>

Maps showing the search results are provided below.

Kind regards

Deirdre Caffrey
NESBReC GIS Officer

PLEASE READ THE FOLLOWING NOTES:

1. NESBReC has provided this report based on the biological data that it holds in the NESBReC database. However, NESBReC is solely the provider of data and cannot advise on individual planning applications. If you wish to comment on any planning application please contact your local planning office at: planning@aberdeenshire.gov.uk or add your comments to the relevant planning application on the website.
2. The search was done to within 100m metres of the area of interest. This is indicated on the map by a broken line around the site.
3. Additional searches within 1km of the area of interest are carried out for Designated Species, Locally Important Species and Geese for Wind Turbine applications, as indicated on the map by a broken line around the site.
4. Search areas or centroids are highlighted in red.
5. The dots on any maps depicting the locations of a species are positioned at the centre of a square representing the resolution of the recorded grid reference. Care should be taken over interpretation.
6. Due to the limits of the map display function, all records may not be visible on the species maps. However, all species are listed in the relevant table above the map and a full list of records can be supplied in Excel format.
7. The ownership of the data within this report remains with the original recorder and is subject to the laws defining Intellectual Property Copyright.
8. This report and the data held within it are to be used solely for those purposes described under the terms of any agreement between the Planning Authority and NESBReC.
9. Although NESBReC makes every possible effort to ensure that the data it provides is accurate and up to date, this report should only be considered to represent the most recent version of each dataset as available at the time of the search.
10. For the purposes of planning reports NESBReC is returning data on designated, notable and invasive species, protected areas and habitat survey data only.
11. NE LBAP Locally Important Species are species that are not on existing designated species lists but have been identified as important in the local context.

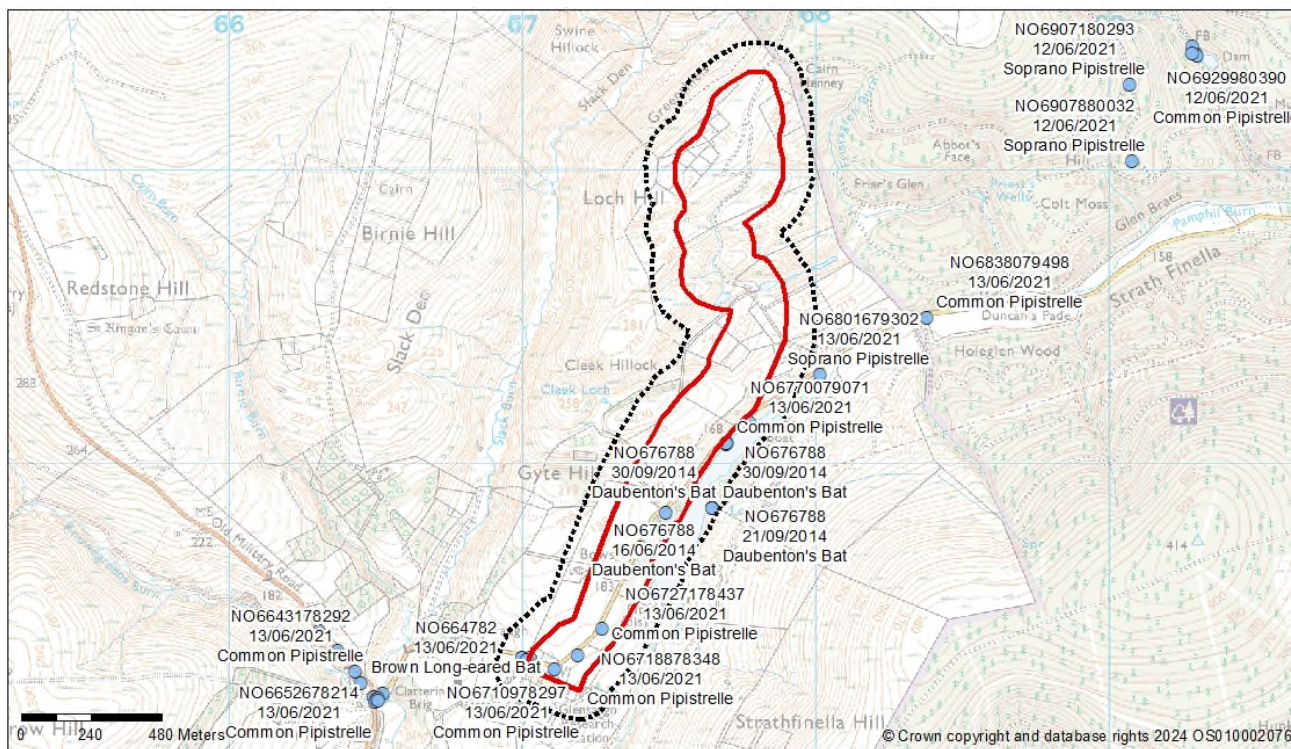
For designated species, the following abbreviated sub-headings are used to describe different levels of protection or importance:

- European Protected Species – Habitat Regulations 1994 (as amended in Scotland)
- Protection of Badgers Act (1992)
- ANNEX 1, 2.1, 2.2 – EC Birds Directive
- UK BAP - UK BAP list of Priority Species
- SBL S2 - Scottish Biodiversity List: International Obligations
- SBL S3 - Scottish Biodiversity List: Nationally Rare at UK level, found in only 1-15 10km squares
- SBL S4 - Scottish Biodiversity List: Present in 5 or fewer 10km squares or sites in Scotland
- SBL S5 - Scottish Biodiversity List: Decline of 25% or more in Scotland in last 25 years

Note, a species may be designated under several of these lists, but will only be listed under its highest level or most relevant designation within this report. The ranking order used here is European Protected Species, Protection of Badgers Act, ANNEX 1, ANNEX 2.1, UK BAP, ANNEX 2.2, SBL S2-SBL S5.

100m Radius Search Maps

Bats	Common Pipistrelle (<i>Pipistrellus pipistrellus</i>) Daubenton's Bat (<i>Myotis daubentonii</i>) Pipistrelle Bat species (<i>Pipistrellus</i>) Soprano Pipistrelle (<i>Pipistrellus pygmaeus</i>)
------	---



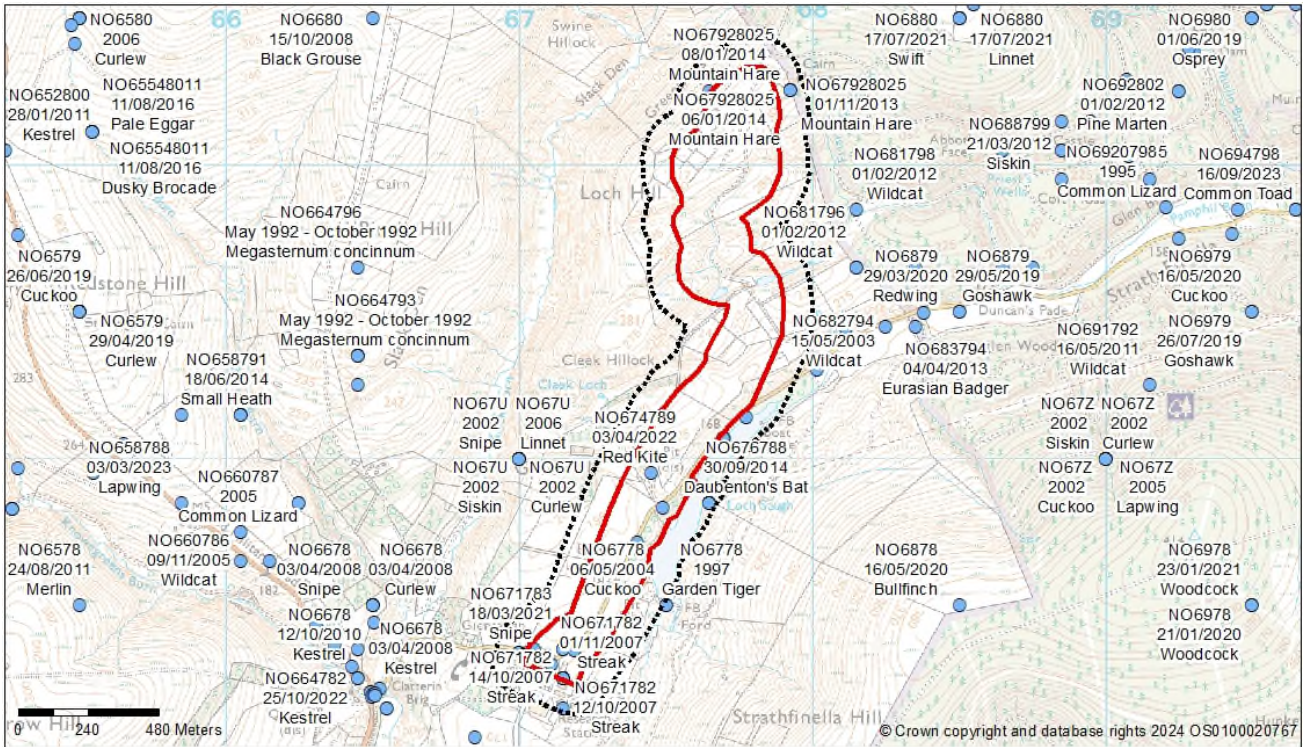
● Bats

Designated Species	<p>European Protected Species Common Pipistrelle (<i>Pipistrellus pipistrellus</i>) Daubenton's Bat (<i>Myotis daubentonii</i>) Pipistrelle Bat species (<i>Pipistrellus</i>) Soprano Pipistrelle (<i>Pipistrellus pygmaeus</i>)</p> <p>Protection of Badgers Act Eurasian Badger (<i>Meles meles</i>)</p> <p>ANNEX 1 Red Kite (<i>Milvus milvus</i>)</p> <p>ANNEX 2.1 Snipe (<i>Gallinago gallinago</i>)</p> <p>UK BAP Eurasian Red Squirrel (<i>Sciurus vulgaris</i>) Mountain Hare (<i>Lepus timidus</i>) Red Grouse (<i>Lagopus lagopus</i>) Anomalous (<i>Stilbia anomala</i>) Autumnal Rustic (<i>Eugnorisma glareosa</i>) Brindled Ochre (<i>Dasypolia templi</i>) Broom Moth (<i>Ceramica pisi</i>) Brown-spot Pinion (<i>Agrochola litura</i>) Centre-barred Sallow (<i>Atethmia centrago</i>) Crescent (<i>Celaena leucostigma</i>) Dark Brocade (<i>Mniotype adusta</i>) Dusky Brocade (<i>Apamea remissa</i>) Ear Moth (<i>Amphipoea oculatea</i>) Flounced Chestnut (<i>Agrochola helvola</i>) Garden Dart (<i>Euxoa nigricans</i>) Garden Tiger (<i>Arctia caja</i>) Ghost Moth (<i>Hepialus humuli</i>) Grass Rivulet (<i>Perizoma albulata</i>) Green-brindled Crescent (<i>Allophyes oxyacanthae</i>) Grey Dagger (<i>Acronicta psi</i>) Grey Mountain Carpet (<i>Entephria caesiata</i>) Haworth's Minor (<i>Celaena haworthii</i>) Large Wainscot (<i>Rhizedra lutosa</i>) Latticed Heath (<i>Chiasmia clathrata</i>) Minor Shoulder-knot (<i>Brachylomia viminalis</i>) Mottled Rustic (<i>Caradrina morpheus</i>) Mouse Moth (<i>Amphipyra tragopoginis</i>) Neglected Rustic (<i>Xestia castanea</i>) Pale Eggar (<i>Trichiura crataegi</i>) Red Carpet (<i>Xanthorhoe decoloraria</i>) Rosy Rustic (<i>Hydraecia micacea</i>) Sallow (<i>Cirrhia icteritia</i>) Shaded Broad-bar (<i>Scotopteryx chenopodiata</i>) Shoulder-striped Wainscot (<i>Leucania comma</i>) Small Phoenix (<i>Ecliptopera silaceata</i>) Small Square-spot (<i>Diarsia rubi</i>) Streak (<i>Chesias legatella</i>) White Ermine (<i>Spilosoma lubricipeda</i>)</p>
--------------------	--

White-line Dart (*Euxoa tritici*)

SBL S5

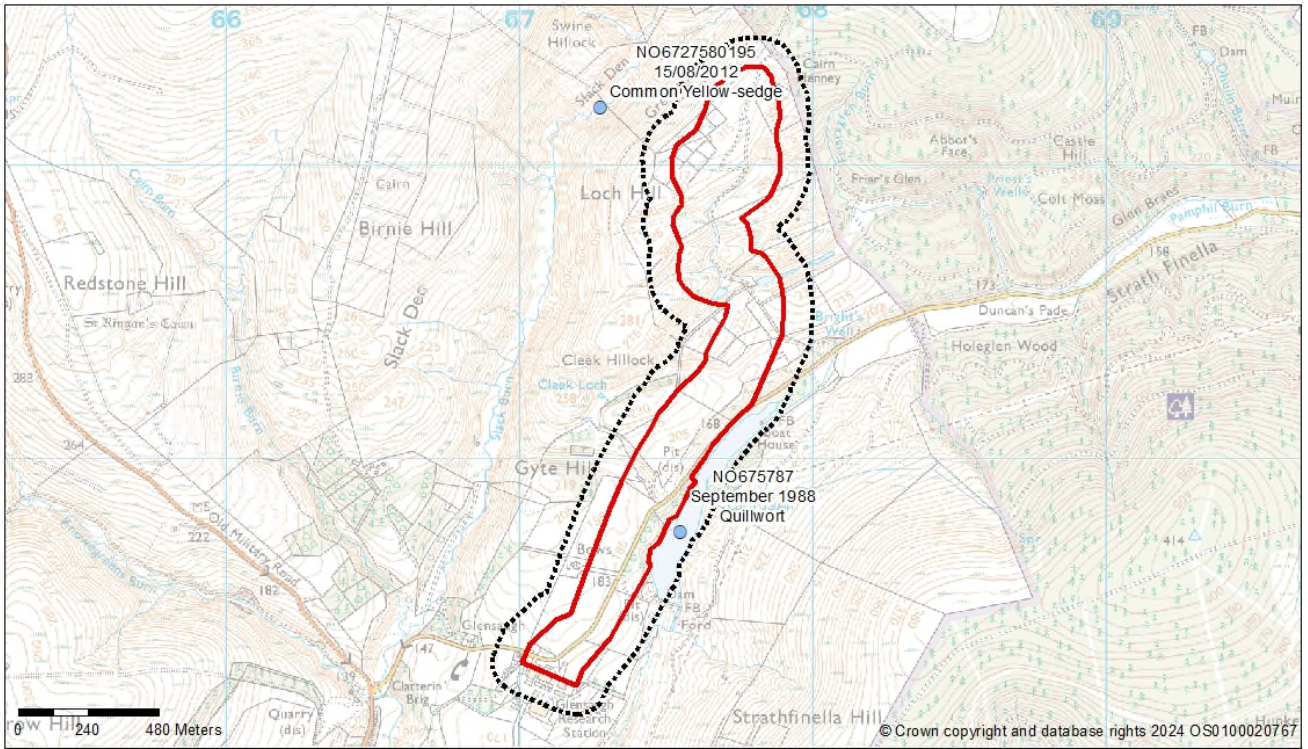
Mossy Saxifrage (*Saxifraga hypnoides*)



● Designated Species

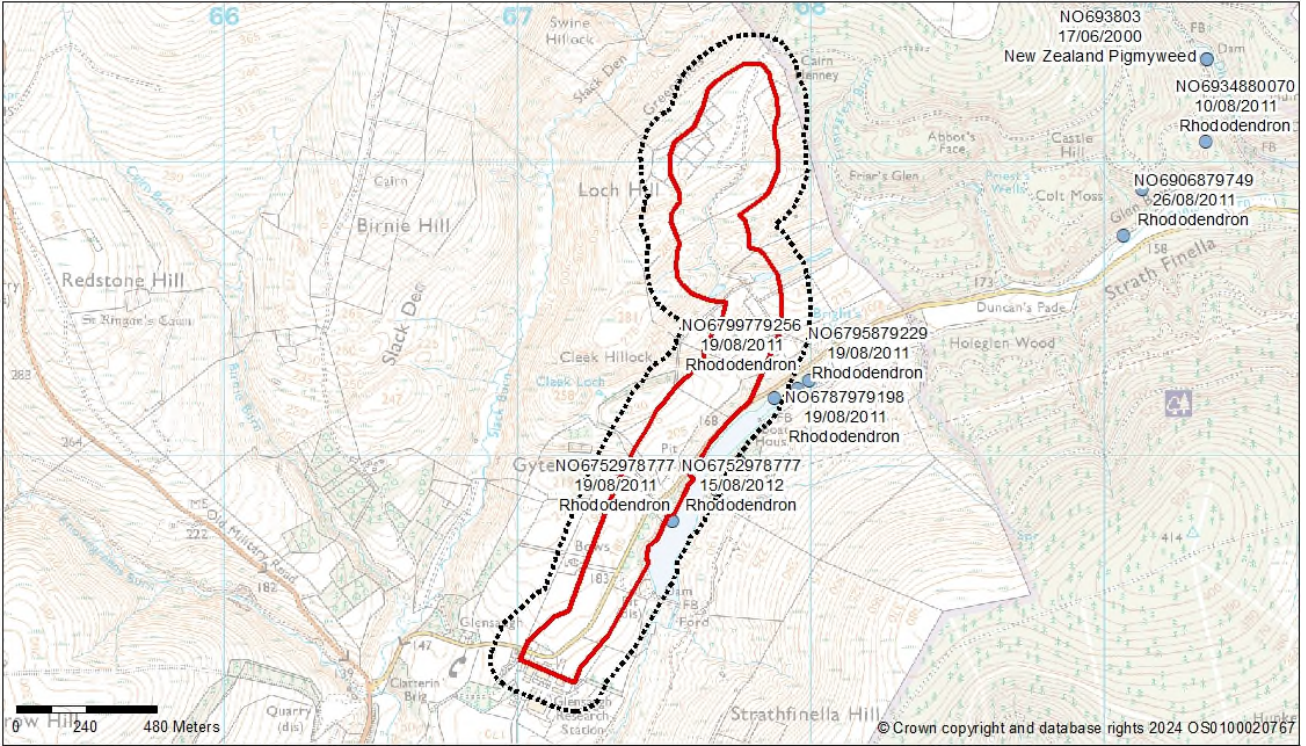
NE LBAP Locally Important
Species

Quillwort (*Isoetes lacustris*)



Invasive Non-Native Plant Species

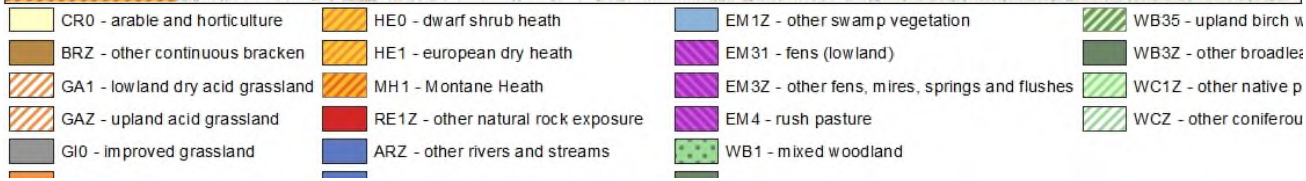
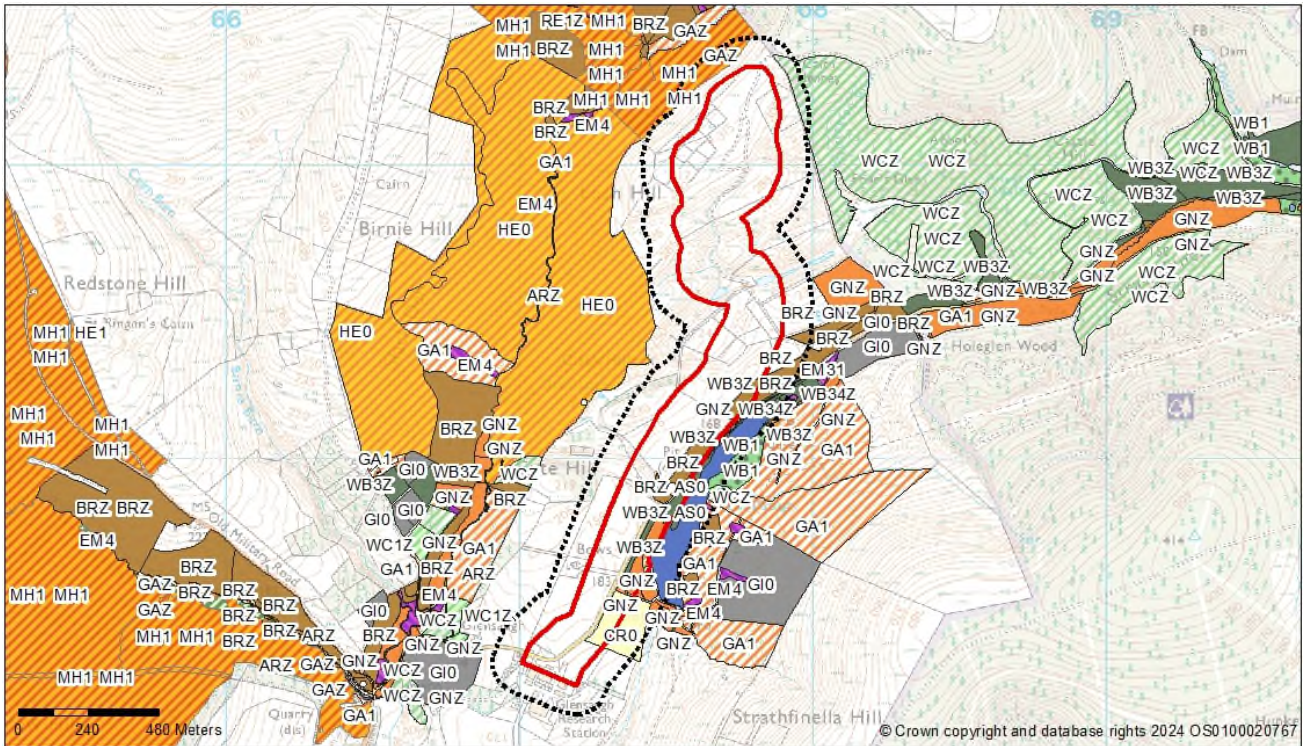
Rhododendron (*Rhododendron ponticum*)



● Invasive Non-Native Plant Species

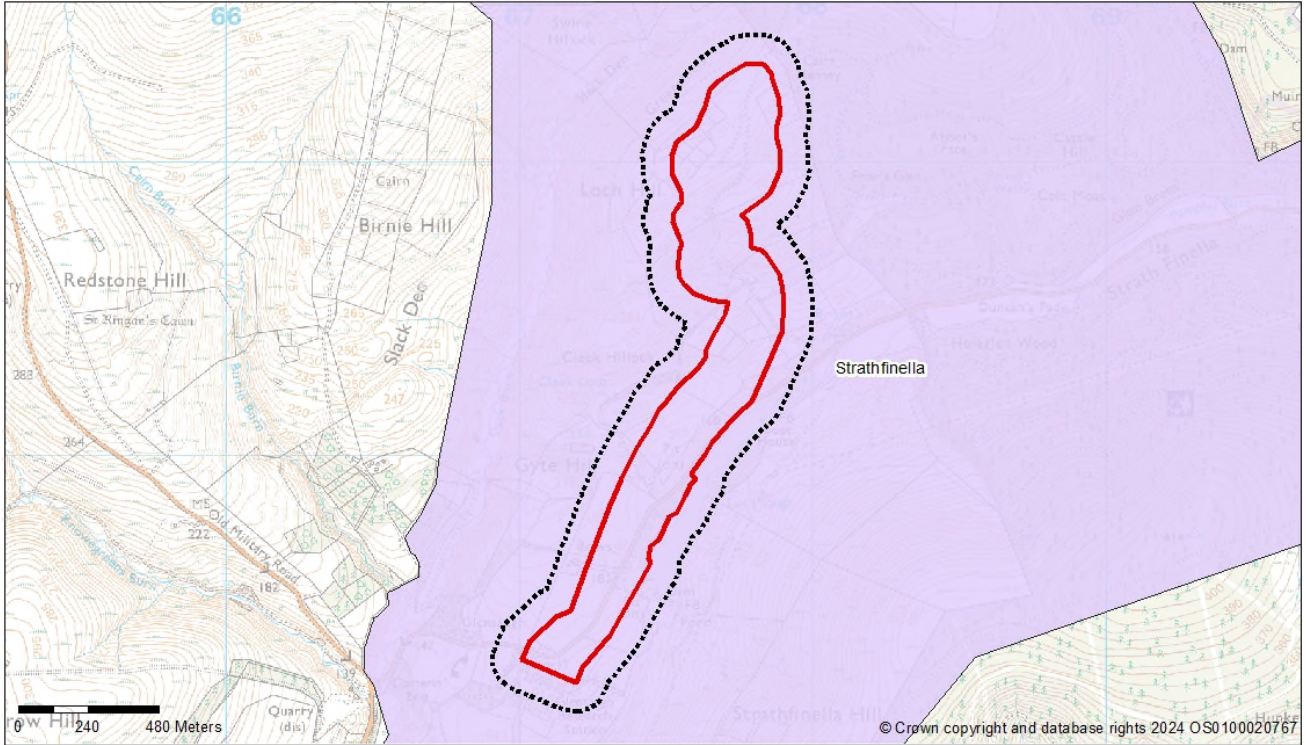
Integrated Habitat System
LNCS 2010-12

- AS0 - Standing open water and canals
- BRZ - Other continuous bracken
- CR0 - Arable and horticulture
- EM31 - Fens [lowland]
- EM4 - Purple moor grass and rush pastures
- GA1 - Lowland dry acid grassland
- GNZ - Other neutral grassland
- MH1 - Montane heaths
- WB1 - Mixed woodland
- WB34Z - Other wet woodland
- WB3Z - Other broadleaved woodland
- WCZ - Other coniferous woodland



Aberdeenshire Local
Nature Conservation Sites

Strathfinella : Deeply weathered granite and an extensive network of fluvio-glacial meltwater channels. Highland Boundary Fault Complex. Slack of Birnie of botanical interest. The loch at Glensaugh supports good aquatic vegetation.



Aberdeenshire Local Nature Conservation Sites

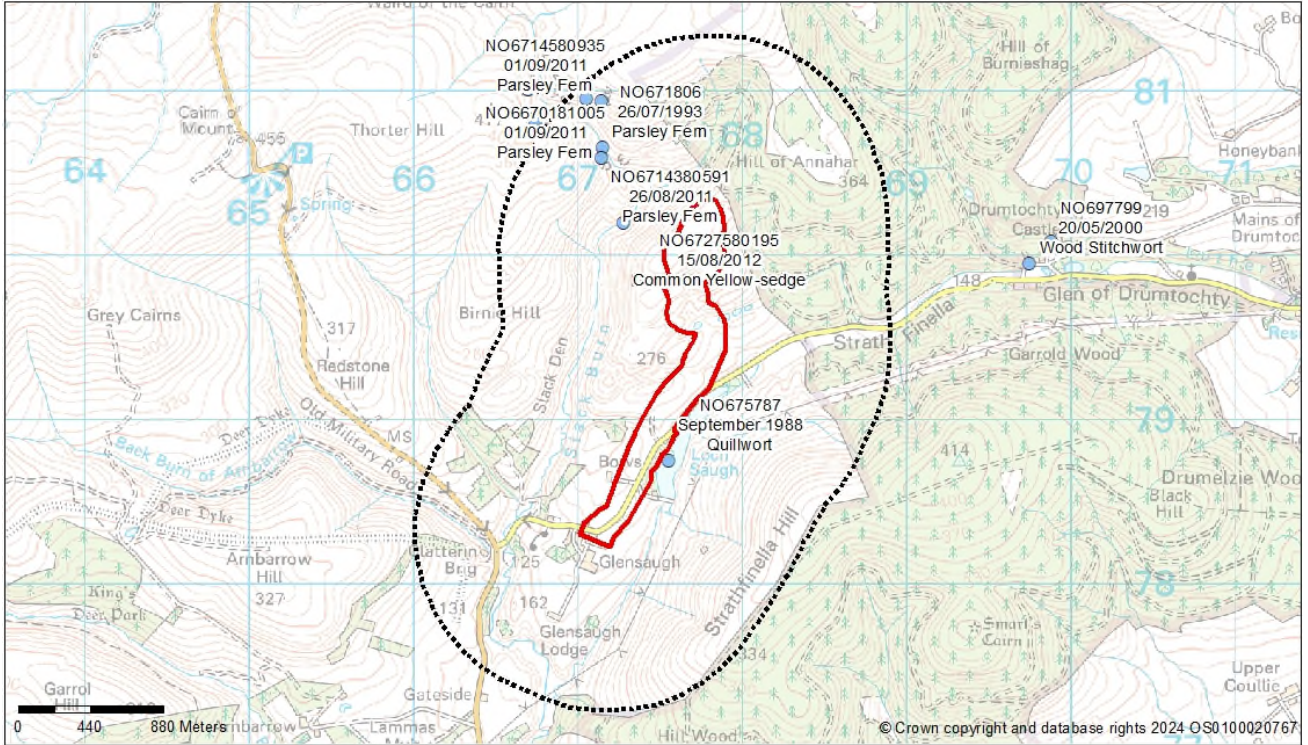
1km Radius Search Maps

Designated Species	<p>European Protected Species</p> <p>Brown Long-eared Bat (<i>Plecotus auritus</i>) Common Pipistrelle (<i>Pipistrellus pipistrellus</i>) Daubenton's Bat (<i>Myotis daubentonii</i>) Pipistrelle Bat species (<i>Pipistrellus</i>) Soprano Pipistrelle (<i>Pipistrellus pygmaeus</i>) Wildcat (<i>Felis silvestris</i>)</p> <p>Protection of Badgers Act</p> <p>Eurasian Badger (<i>Meles meles</i>)</p> <p>ANNEX 1</p> <p>Red Kite (<i>Milvus milvus</i>) Short-eared Owl (<i>Asio flammeus</i>) White-tailed Eagle (<i>Haliaeetus albicilla</i>)</p> <p>ANNEX 2.1</p> <p>Grey Partridge (<i>Perdix perdix</i>) Snipe (<i>Gallinago gallinago</i>)</p> <p>ANNEX 2.2</p> <p>Black-headed Gull (<i>Chroicocephalus ridibundus</i>) Redwing (<i>Turdus iliacus</i>)</p> <p>UK BAP</p> <p>Common Lizard (<i>Zootoca vivipara</i>) Eurasian Red Squirrel (<i>Sciurus vulgaris</i>) Mountain Hare (<i>Lepus timidus</i>) Pine Marten (<i>Martes martes</i>) Bullfinch (<i>Pyrrhula pyrrhula</i>) Cuckoo (<i>Cuculus canorus</i>) Curlew (<i>Numenius arquata</i>) Herring Gull (<i>Larus argentatus</i>) House Sparrow (<i>Passer domesticus</i>) Lapwing (<i>Vanellus vanellus</i>) Lesser Redpoll (<i>Acanthis cabaret</i>) Linnet (<i>Linaria cannabina</i>) Red Grouse (<i>Lagopus lagopus</i> subsp. <i>scotica</i>) Red Grouse (<i>Lagopus lagopus</i>) Reed Bunting (<i>Emberiza schoeniclus</i>) Skylark (<i>Alauda arvensis</i>) Song Thrush (<i>Turdus philomelos</i>) Spotted Flycatcher (<i>Muscicapa striata</i>) Starling (<i>Sturnus vulgaris</i>) Tree Pipit (<i>Anthus trivialis</i>) Yellowhammer (<i>Emberiza citrinella</i>) Anomalous (<i>Stilbia anomala</i>) Autumnal Rustic (<i>Eugnorisma glareosa</i>) Brindled Ochre (<i>Dasyptolia templi</i>) Broom Moth (<i>Ceramica pisi</i>) Brown-spot Pinion (<i>Agrochola litura</i>) Centre-barred Sallow (<i>Atethmia centrigo</i>) Crescent (<i>Celaena leucostigma</i>)</p>
--------------------	--

Dark Brocade (*Mniotype adusta*)
 Dusky Brocade (*Apamea remissa*)
 Ear Moth (*Amphipoea oculea*)
 Flounced Chestnut (*Agrochola helvola*)
 Garden Dart (*Euxoa nigricans*)
 Garden Tiger (*Arctia caja*)
 Ghost Moth (*Hepialus humuli*)
 Grass Rivulet (*Perizoma albulata*)
 Green-brindled Crescent (*Allophyes oxyacanthae*)
 Grey Dagger (*Acronicta psi*)
 Grey Mountain Carpet (*Entephria caesiata*)
 Haworth's Minor (*Celaena haworthii*)
 Large Wainscot (*Rhizedra lutosa*)
 Latticed Heath (*Chiasmia clathrata*)
 Minor Shoulder-knot (*Brachylomia viminalis*)
 Mottled Rustic (*Caradrina morpheus*)
 Mouse Moth (*Amphipyra tragopoginis*)
 Neglected Rustic (*Xestia castanea*)
 Pale Eggar (*Trichiura crataegi*)
 Red Carpet (*Xanthorhoe decoloraria*)
 Rosy Minor (*Litoligia literosa*)
 Rosy Rustic (*Hydraecia micacea*)
 Sallow (*Cirrhia icteritia*)
 Shaded Broad-bar (*Scotopteryx chenopodiata*)
 Shoulder-striped Wainscot (*Leucania comma*)
 Small Heath (*Coenonympha pamphilus*)
 Small Pearl-bordered Fritillary (*Boloria selene*)
 Small Phoenix (*Ecliptopera silaceata*)
 Small Square-spot (*Diarsia rubi*)
 Streak (*Chesias legatella*)
 White Ermine (*Spilosoma lubricipeda*)
 White-line Dart (*Euxoa tritici*)
 SBL S3 Cercyon (*Cercyon melanocephalus*) (*Cercyon* (*Cercyon*)
melanocephalus)
SBL S3
Megasternum concinnum (*Megasternum concinnum*)
Sphaeridium scarabaeoides (*Sphaeridium scarabaeoides*)
SBL S5
 Kestrel (*Falco tinnunculus*)
 Siskin (*Spinus spinus*)
 Swift (*Apus apus*)
 Mossy Saxifrage (*Saxifraga hypnoides*)
Other Notable Species
 Goshawk (*Accipiter gentilis*)

NE LBAP Locally Important Species

Common Yellow-sedge (*Carex viridula* subsp. *oedocarpa*)
Mountain Male-fern (*Dryopteris oreades*)
Parsley Fern (*Cryptogramma crispa*)
Quillwort (*Isoetes lacustris*)



● NE LBAP Locally Important Species