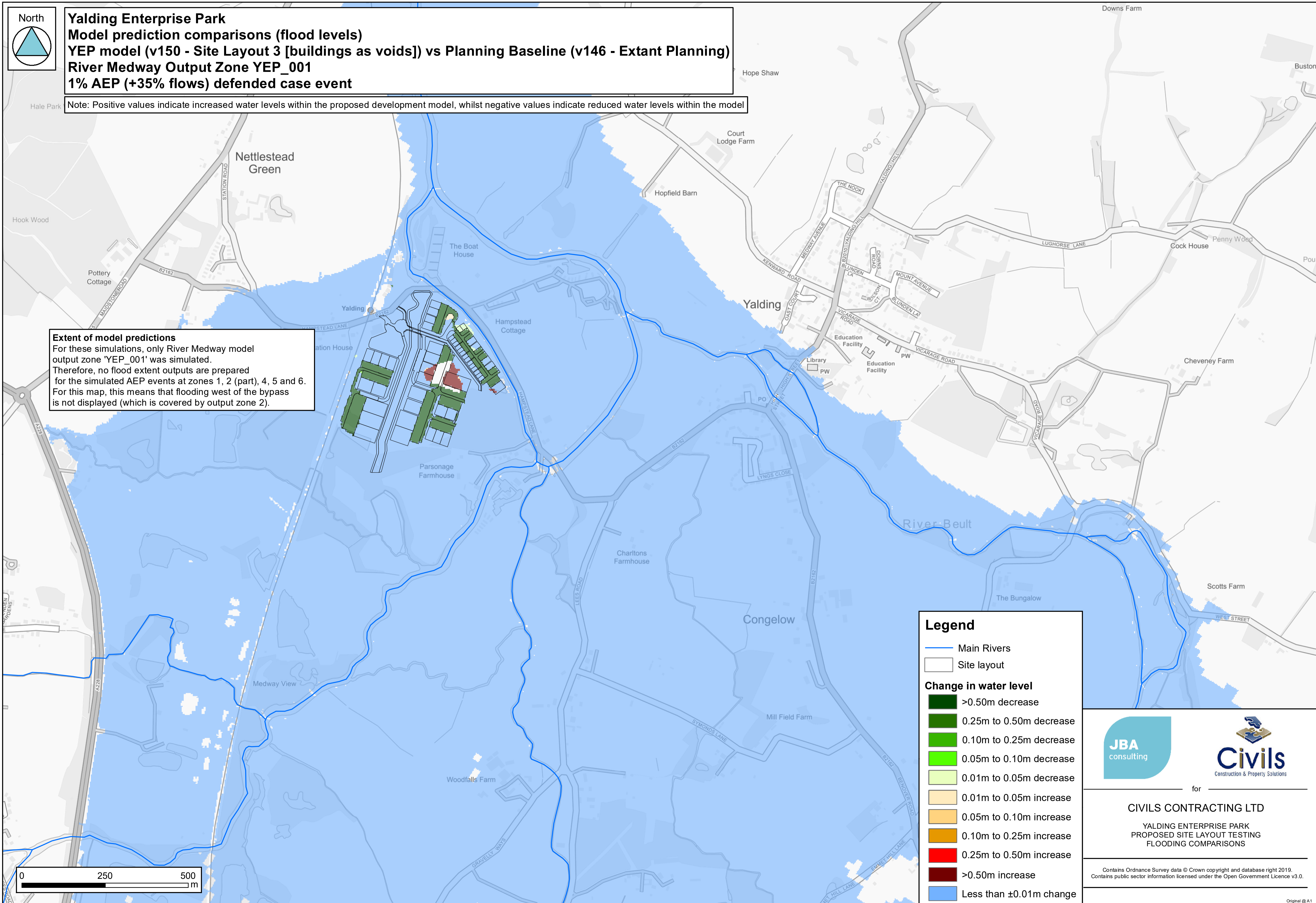


Yalding Enterprise Park
Model prediction comparisons (flood levels)
YEP model (v150 - Site Layout 3 [buildings as voids]) vs Planning Baseline (v146 - Extant Planning)
River Medway Output Zone YEP_001
1% AEP (+35% flows) defended case event

Note: Positive values indicate increased water levels within the proposed development model, whilst negative values indicate reduced water levels within the model

Extent of model predictions
 For these simulations, only River Medway model output zone 'YEP_001' was simulated. Therefore, no flood extent outputs are prepared for the simulated AEP events at zones 1, 2 (part), 4, 5 and 6. For this map, this means that flooding west of the bypass is not displayed (which is covered by output zone 2).



Legend

- Main Rivers
- Site layout

Change in water level

- >0.50m decrease
- 0.25m to 0.50m decrease
- 0.10m to 0.25m decrease
- 0.05m to 0.10m decrease
- 0.01m to 0.05m decrease
- 0.01m to 0.05m increase
- 0.05m to 0.10m increase
- 0.10m to 0.25m increase
- 0.25m to 0.50m increase
- >0.50m increase
- Less than ±0.01m change



for
CIVILS CONTRACTING LTD
 YALDING ENTERPRISE PARK
 PROPOSED SITE LAYOUT TESTING
 FLOODING COMPARISONS

Contains Ordnance Survey data © Crown copyright and database right 2019.
 Contains public sector information licensed under the Open Government Licence v3.0.