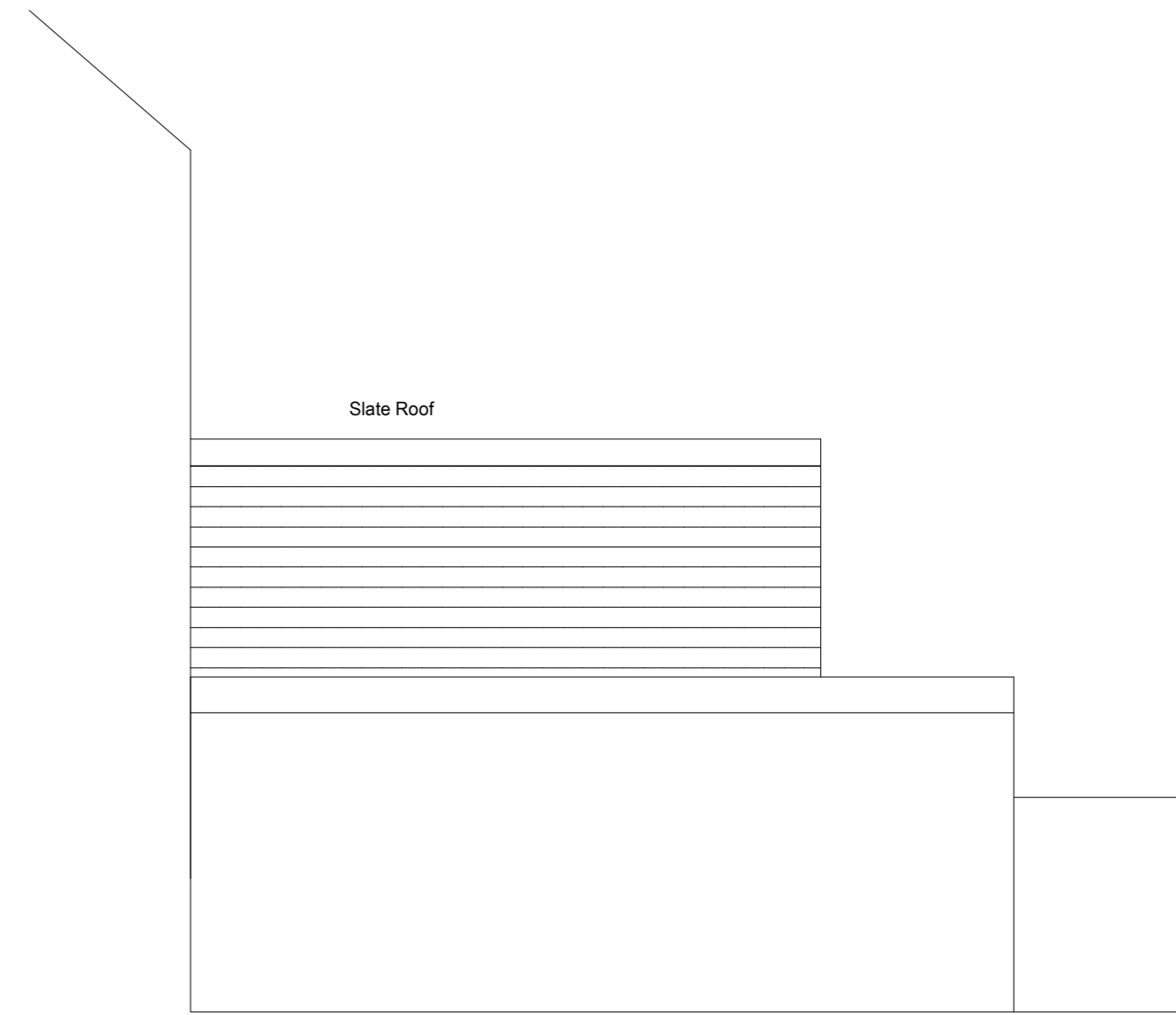


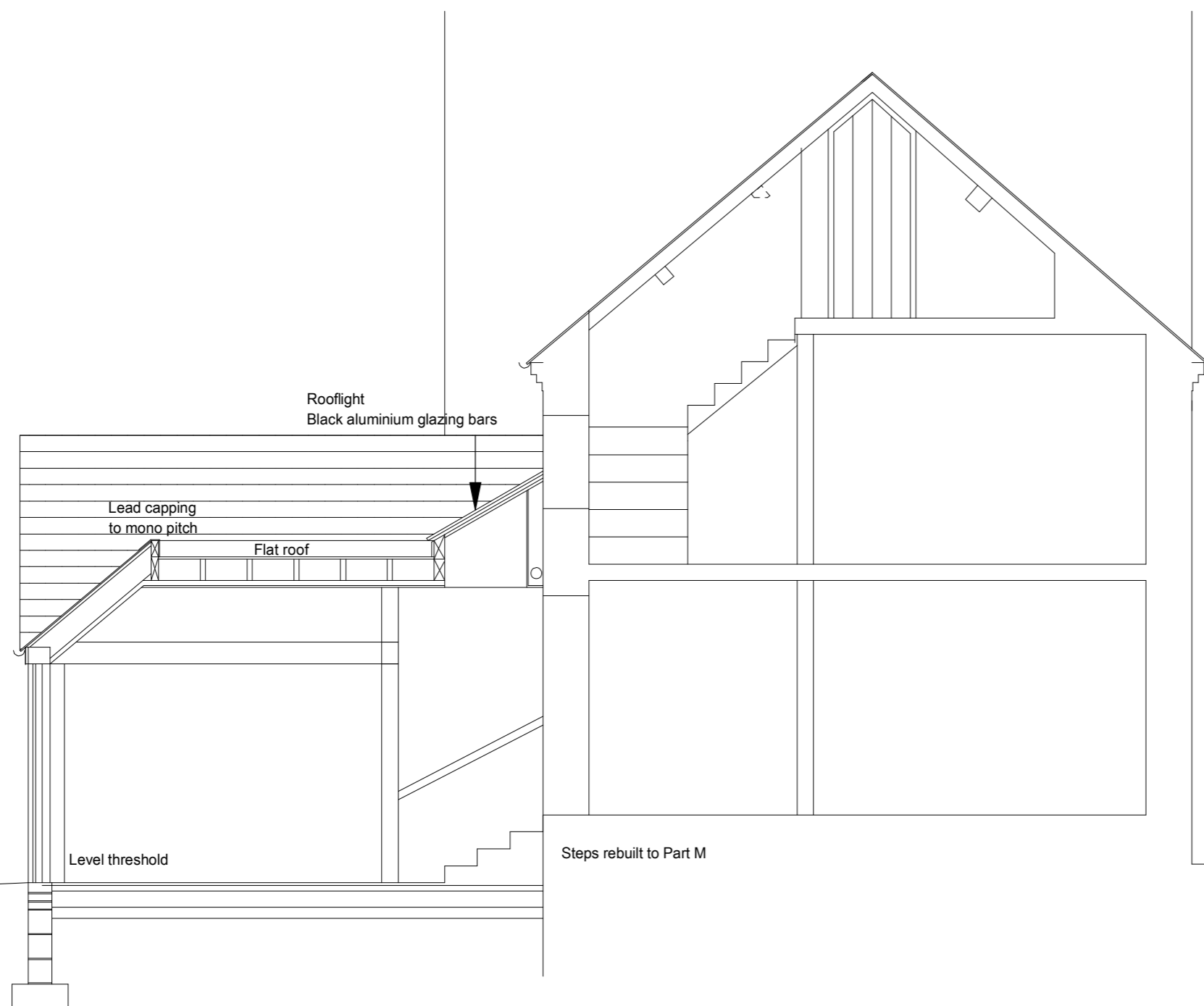
SECTION A-A



NORTH ELEVATION

MATERIALS

- Roof :- Reclaimed slate
- Flat Roof :- Grey GRP
- Rainwater goods :- Black cast iron
- Timber Frame :- Seasoned Oak
- Window Frames :- Black aluminium in oak subframe
- Bifold Doors :- Black aluminium
- Brickwork :- Re stock brick - Furnace Brick - Natural Orange



SECTION B-B



scale 1/50 at A2

REV A North Elevation shown

**PHILIP HUMPHREYS ARCHITECTS**  
 Tan-y-Castell, Broad Street, MONTGOMERY, SY15 6PH. Tel./Fax: 01686 668373

*Proposed Alterations to Cartref, Princes Street, Montgomery*

Sections