

New non-illuminated box fascia in Aluminium, powder coated Blue RAL 5005, 30% Gloss with Brown Arizona Oak woodtexstrip to base.

**SIGN 1**  
5.25x1.07 m

**SIGN 2**  
3.53x1.07 m

New Box Fascia Externally illuminated via Trough Light in Aluminum Powder coated white RAL 9010 with in Tesco opal 030 Avery 4509 Red 431, Express and blips -Opal 030-Avery 5600 LD/082A blue letters.

**SIGN 4**  
1.65x1.07 m

New non-illuminated box fascia in Aluminium, powder coated Blue RAL 5005, 30% Gloss with Brown Arizona Oak woodtexstrip to base.



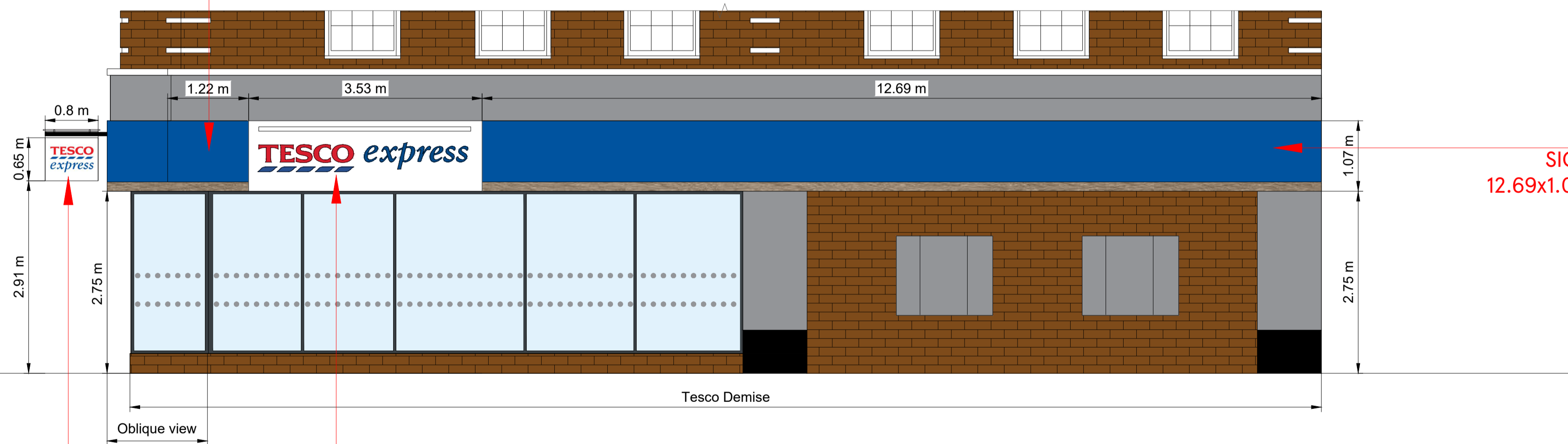
**SIGN 3**  
8.04x1.07 m

New non-illuminated box fascia in Aluminium, powder coated Blue RAL 5005, 30% Gloss with Brown Arizona Oak woodtexstrip to base and Store Address and Est. year vinyl lettering applied to new fascia, non illuminated.  
Store Ad.: / Est. yr.: 100mm

## SOUTH ELEVATION

New non-illuminated box fascia in Aluminium, powder coated Blue RAL 5005, 30% Gloss with Brown Arizona Oak woodtexstrip to base.

**SIGN 5**  
1.22x1.07 m



**SIGN 7**  
12.69x1.07 m

New non-illuminated box fascia in Aluminium, powder coated Blue RAL 5005, 30% Gloss with Brown Arizona Oak woodtexstrip to base.

**SIGN 8**  
0.8x0.65 m

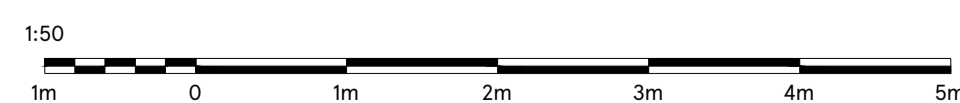
**SIGN 6**  
3.53x1.07 m

New Box Fascia Externally illuminated via Trough Light in Aluminum Powder coated white RAL 9010 with in Tesco opal 030 Avery 4509 Red 431, Express and blips -Opal 030-Avery 5600 LD/082A blue letters.

New Project sign Externally illuminated via Trough Light in Aluminum Powder coated white RAL 9010 with Tesco in opal 030 Avery 4509 Red 431, Express and blips in Opal 030-Avery 5600 LD/082A blue letters. Sides, top and bottom to be blue as per fascia.

## EAST ELEVATION

SCALE BAR



DRAWING NO  
03\_NEWP\_03G

SCALE  
1:50@A1

CHECKED BY  
DEEKSHA

DRAWN BY  
PUNITH K N

DATE  
29.01.2024

STORE TYPE  
EXPRESS

STORE NAME  
NEWPORT IOW

CONTENT  
PROPOSED ELEVATION\_ADV

**TESCO**  
FEASIBILITY PLANNING  
STORE PLANNING DEPARTMENT  
PROPERTY SERVICES  
HIGHWOODS BUILDING, KESTRAL WAY  
WELWYN GARDEN CITY, HERTFORDSHIRE, AL7 1GB UK  
TELEPHONE : 01707 395150  
THE COPYRIGHT AND ALL OTHER RIGHTS IN AND RELATING TO THIS PUBLICATION BELONG TO AND ARE THE SOLE PROPERTY OF TESCO STORES LIMITED. ALL RIGHTS ARE RESERVED. NOTHING IN THIS PUBLICATION MAY BE REPRODUCED OR TRANSMITTED IN ANY FORM OR BY ANY ELECTRONIC OR MECHANICAL MEANS INCLUDING PHOTOCOPIING AND RECORDING OR FROM ANY RETRIEVAL SYSTEM WITHOUT THE PRIOR WRITTEN LICENCE FROM THE OWNER. ©1997 TESCO STORES LIMITED