

799 : **Hambush Holiday Let, Baltonsborough**

Discharge of Conditions – 2016/0836/FUL

February 2024

Revision: -

**Hambush Holiday Let, Baltonsborough
Discharge of Conditions – 2016/0836/FUL**

Client: Mr & Mrs Maddock

Project Number: 799

Revision	Description	Prepared by	Approved by	Date
-	Discharge of Conditions	CS	MG	07.02.2024

This document has been prepared in accordance with Orme Limited standard operating procedures. It remains confidential and the copyright of Orme Limited. Any unauthorised reproduction or usage by any person other than the addressee is strictly prohibited

Enquiries to: Orme Ltd, Mill Farm Barns, Tuckers Lane, Baltonsborough, Glastonbury, BA6 8RH

Email: info@orme-architecture.com

Telephone: 01458 445 100

Introduction

Following the approval of the conversion of redundant barns to holiday let and ancillary accommodation in 2016, at Hambush Farm, Baltonsborough, BA6 8QD – reference 2016/0836/FUL, work commenced on site in 2017, and was subsequently completed in mid 2018.

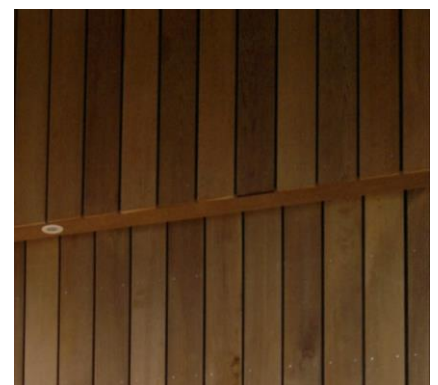
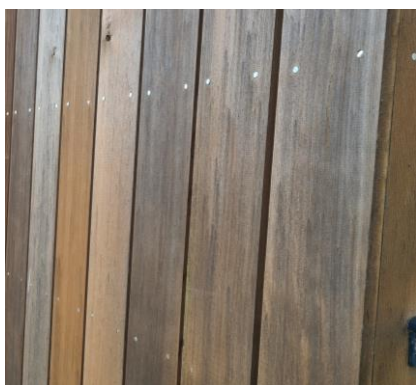
This document has been prepared in relation to the discharge of conditions 5 & 6.

Condition 5

“No external facing materials in respect of the walls and roof, and any external screen walls, of the holiday let hereby approved shall be constructed or installed unless a schedule of materials and finishes samples of the materials to be used in the construction of the external surfaces have been submitted and approved in writing by the Local Planning Authority.”

Timber Cladding

Norclad Western Red Cedar with brunnea microshades.



Condition 5

“No external facing materials in respect of the walls and roof, and any external screen walls, of the holiday let hereby approved shall be constructed or installed unless a schedule of materials and finishes samples of the materials to be used in the construction of the external surfaces have been submitted and approved in writing by the Local Planning Authority.”

Roof

Corrugated steel roof cladding and north-east gable in RAL 7016 Anthracite..



Condition 6

“No new window, door or other glazed screen shall be installed or undertaken in respect of the approved holiday let unless full details of that item have been first submitted to and approved in writing by the Local Planning Authority.”

Windows & Doors

Painted double glazed timber windows and doors in RAL 7016 Anthracite.

