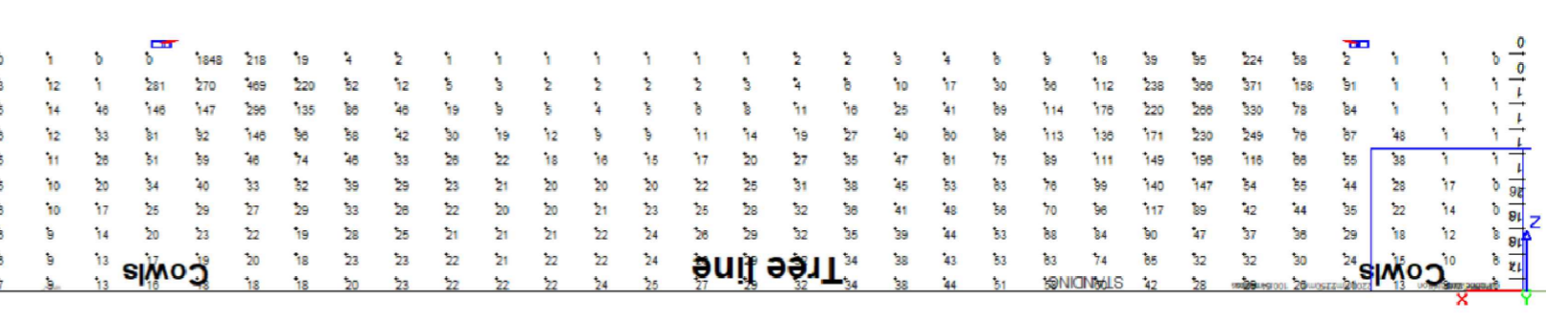
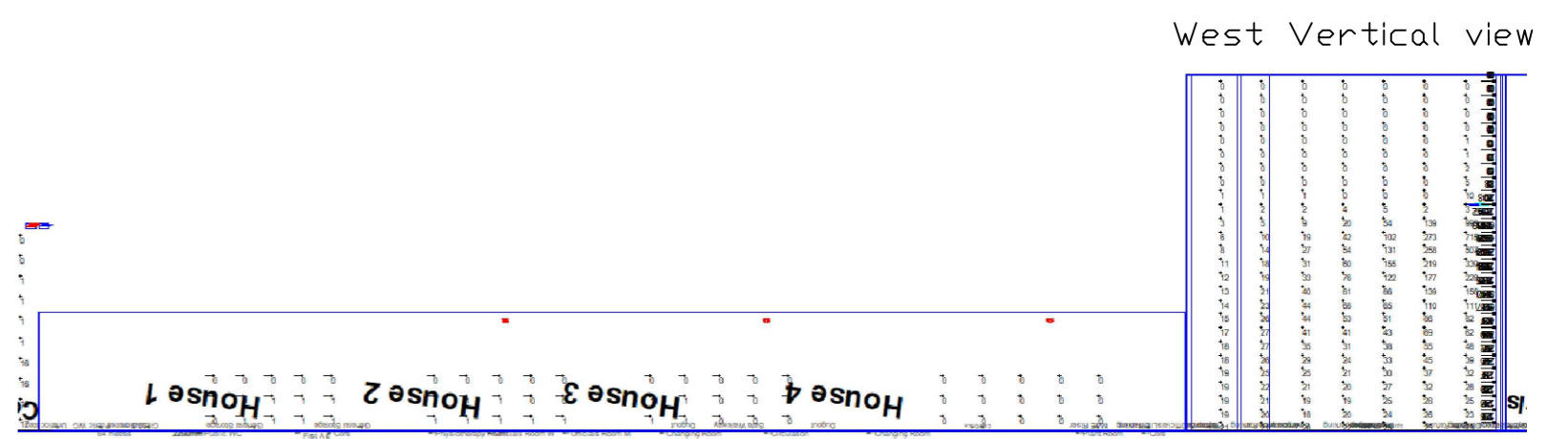
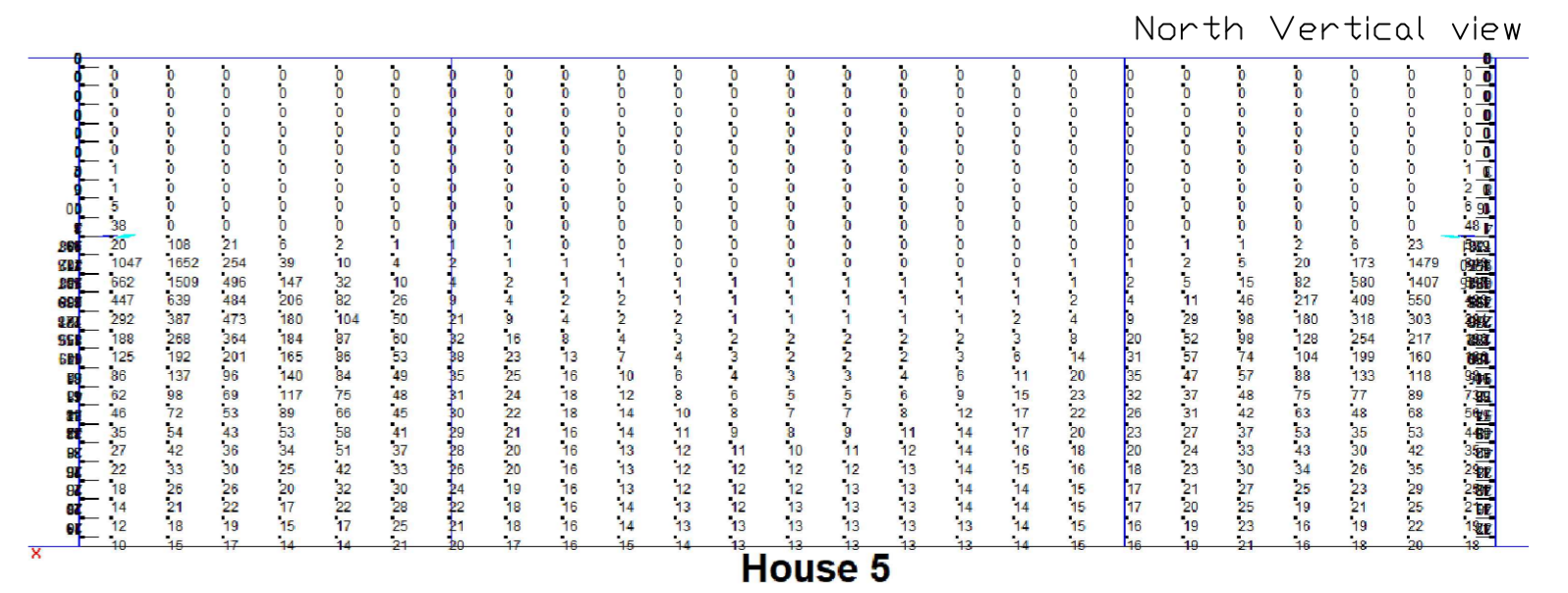
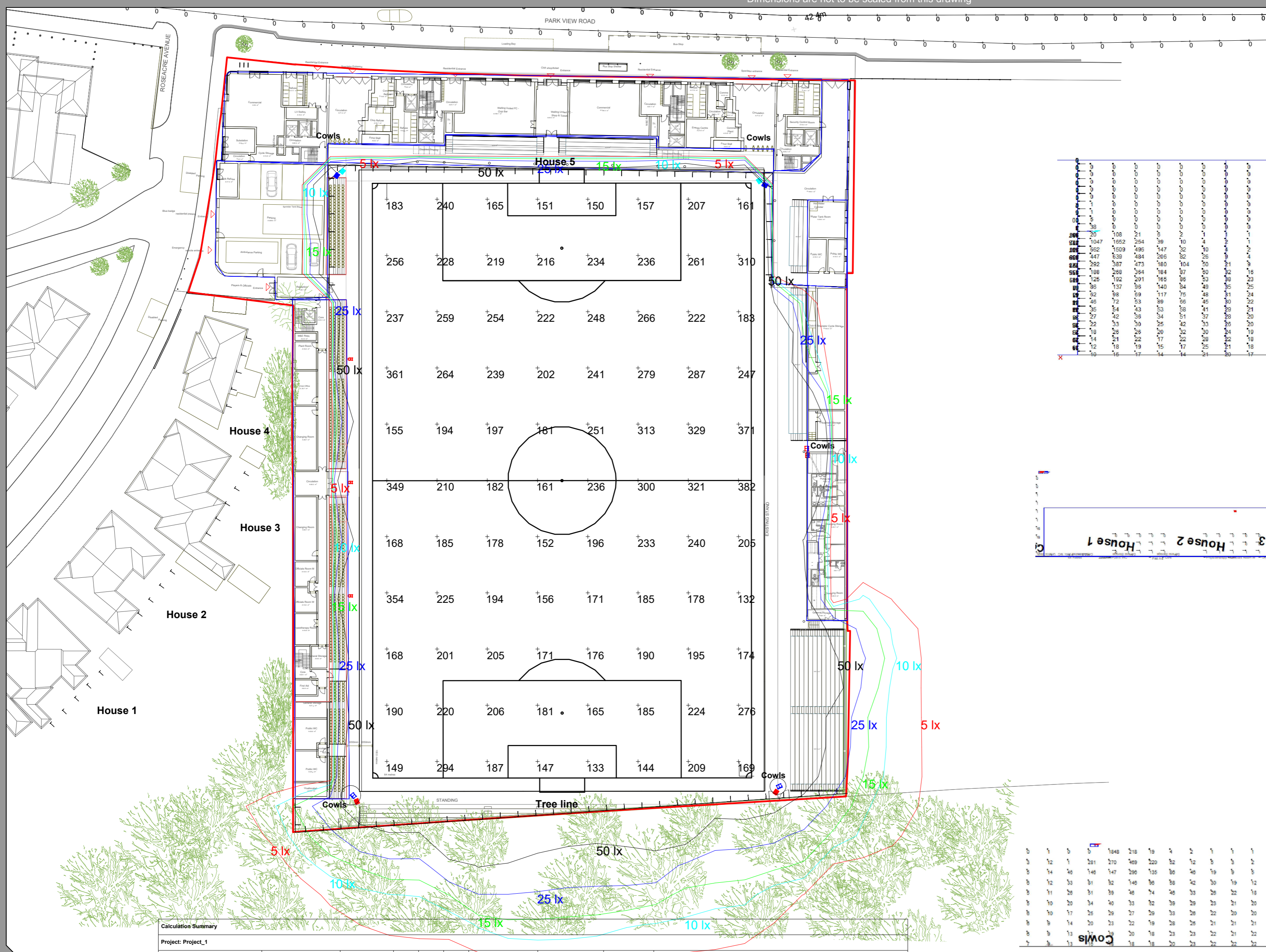


Dimensions are not to be scaled from this drawing



Kingfisher Lighting

Part of the Luceco PLC group of companies **LUCECO**



Calculation Summary

Project: Project_1

Label	CalcType	Units	Avg	Max	Min	Uniformity (Min/Avg)	Diversity (Min/Max)	Meter Type	Description
Pitch		Lux	218.50	382	132	0.60	0.35	Horizontal	5 lx

Luminaire Schedule

Symbol	Qty	Label	Arrangement	Description	Luminaires L/W	WELL	TMS & TMS Information	Light Engine
A	2	A NPT 1300w 0x	SINGLE	-1-1300w LED 5000K Avenis Flood with NPT asymmetric optic @ 15m Eoading	144	0.00	1300w	Lenslar
B	1	B NPT 1300w 5	SINGLE	-1-1300w LED 5000K Avenis Flood with NPT asymmetric optic @ 15.0m	130	0.00	1300w	Lenslar
C	2	C NPT 1300w 0x	SINGLE	-1-1300w LED 5000K Avenis Flood with NPT asymmetric optic @ 15m Eoading	144	0.00	1300w	Lenslar
D	1	D WEST 465w 0x	SINGLE	-1-465w LED 5000K Avenis Flood with WEST asymmetric optic @ 8m stand	144	0.00	465w	Lenslar
E	2	E WEST 1300w 0x	SINGLE	1300W LED 5000K Avenis Floodlight with WEST optic @ 15m Eoading	130	0.00		LAMP WEST-160 1300W 0x

A2

Welling United FC

Scale: 1:500 at A2

Date: 23/11/2023

Project Number: Rev B

Drawing No.: Rev B

Lighting Designer: R. Hooschin

HEA HEMSA ILLP

For our LED lighting designs a 0.9m has been used. If this differs from the maintenance period for this project then you must advise us accordingly.

A lighting applications design service is provided by us in good faith and without charge, relating to Kingfisher products only. As such, whilst every endeavor is made for accuracy from information provided by yourselves, the final responsibility for the suitability of the design lies with the client. The company cannot, therefore, accept any liability or consequential loss incurred.



Calculation Summary									
Project: TI									
Label	CalcType	Units	Avg	Max	Min	Uniformity (Min/Avg)	Diversity (Min/Max)	Meter Type	Description
ObtrusiveLight_TI_1	Obtrusive - TI	%	0.00	0	0	N.A.	N.A.	Vert-Along	
ObtrusiveLight_TI_2	Obtrusive - TI	%	0.00	0	0	N.A.	N.A.	Vert-Along	

Calculation Summary									
Project: ILP									
Label	CalcType	Units	Avg	Max	Min	Uniformity (Min/Avg)	Diversity (Min/Max)	Meter Type	Description
House Row 1_Cd_Seg1	Obtrusive - Cd	N.A.	1462	1832	1081	0.74	0.59	Vert-PerpCW	
House Row 1_III_Seg1	Obtrusive - III	Lux	0.47	1	0	0.00	0.00	Vert-PerpCW	
House Row 2_Cd_Seg1	Obtrusive - Cd	N.A.	1252	1558	981	0.78	0.63	Vert-PerpCW	
House Row 2_III_Seg1	Obtrusive - III	Lux	0.53	1	0	0.00	0.00	Vert-PerpCW	
House Row 3_Cd_Seg1	Obtrusive - Cd	N.A.	1017	1797	0	0.00	0.00	Vert-PerpCW	
House Row 3_III_Seg1	Obtrusive - III	Lux	0.27	1	0	0.00	0.00	Vert-PerpCW	
House Row 4_Cd_Seg1	Obtrusive - Cd	N.A.	542.33	1170	0	0.00	0.00	Vert-PerpCW	
House Row 4_III_Seg1	Obtrusive - III	Lux	0.00	0	0	N.A.	N.A.	Vert-PerpCW	
House Row 5_Cd_Seg1	Obtrusive - Cd	N.A.	42095	146092	878	0.02	0.01	Vert-PerpCW	
House Row 5_Cd_Seg2	Obtrusive - Cd	N.A.	44101	177239	231	0.01	0.00	Vert-PerpCW	
House Row 5_Cd_Seg3	Obtrusive - Cd	N.A.	15985	50989	485	0.03	0.01	Vert-PerpCW	
House Row 5_III_Seg1	Obtrusive - III	Lux	96.03	1560	0	0.00	0.00	Vert-PerpCCW	
House Row 5_III_Seg2	Obtrusive - III	Lux	45.71	1652	0	0.00	0.00	Vert-PerpCCW	
House Row 5_III_Seg3	Obtrusive - III	Lux	43.13	998	0	0.00	0.00	Vert-PerpCCW	

Calculation Summary									
Project: Tree line									
Label	CalcType	Units	Avg	Max	Min	Uniformity (Min/Avg)	Diversity (Min/Max)	Meter Type	Description
Tree Line_III_Seg1	Obtrusive - III	Lux	5.75	17	0	0.00	0.00	Vert-PerpCCW	
Tree Line_III_Seg2	Obtrusive - III	Lux	52.76	1848	0	0.00	0.00	Vert-PerpCCW	

Obtrusive Light - Compliance Report
 CIE 150:2017, E3-Medium District Brightness,
 Pre-Curfew
 Filename: Welling united FC Deisgn Rev B
 23/11/2023 20:22:45

Illuminance
 Maximum Allowable Value: 10 Lux

Calculations Tested (13):

Calculation Label	Test Results	Max. Illum.
House Row 1_III_Seg1	PASS	1
House Row 2_III_Seg1	PASS	1
House Row 3_III_Seg1	PASS	1
House Row 4_III_Seg1	PASS	0
Tree Line_III_Seg1	FAIL	17
Tree Line_III_Seg2	FAIL	1848
House Row 5_III_Seg1	FAIL	1560
House Row 5_III_Seg2	FAIL	1652
House Row 5_III_Seg3	FAIL	998

Luminous Intensity (Cd) At Vertical Planes
 Maximum Allowable Value calculated from
 CIE 150:2017 (varies by Projected Area
 sq.m. and Distance Factor)
 For E3-Medium District Brightness,
 Projected Area and Distance Factors:
 (0.002, 0.86) (0.01, 1.9) (0.03, 3.8) (0.13,
 7.5) (0.5, 15)

Projected Area (sq.m) = Approx. projected
 emitting area of luminaire in direction of
 observer
 Distance (m) = Distance from luminaire to
 observer
 Max Cd Allowed = Projected Area Factor *
 Distance

Calculations Tested (13):

Calculation Label	Test Results
House Row 1_Cd_Seg1	PASS
House Row 2_Cd_Seg1	PASS
House Row 3_Cd_Seg1	PASS
House Row 4_Cd_Seg1	PASS
Tree Line_Cd_Seg1	FAIL
Tree Line_Cd_Seg2	FAIL
House Row 5_Cd_Seg1	FAIL
House Row 5_Cd_Seg2	FAIL
House Row 5_Cd_Seg3	FAIL



A:\Borders\New Images + QR Code\Amnis\Amnis NFT.jpg

A:\Borders\New Images + QR Code\Amnis\Amnis NST.jpg

A:\Borders\New Images + QR Code\Amnis\Amnis WSTB.jpg

Welling United FC	Scale 1:500 at A2	Project Number Rev B
	Date 23/11/2023	Drawing No. Rev B
Lighting Designer: R Housham		

A lighting applications design service is provided by us in good faith and without charge, relating to Kingfisher products only. As such, whilst every endeavor is made for accuracy from information provided by yourselves, the final responsibility for the suitability of the design lies with the client. The company cannot, therefore, accept any liability or consequential loss incurred.