

Location of Midhurst within the South Downs National Park

- SDNP boundary
- Midhurst



ht 2023
 itabase rights 2023 Ordnance Survey 10050083. You are permitted to use this data solely to enable you to respond to, or interact with, the organisation

Arrival Signage for The Grange car park & greening walkway

Sign IDs & locations:

GR01: 488555, 121277

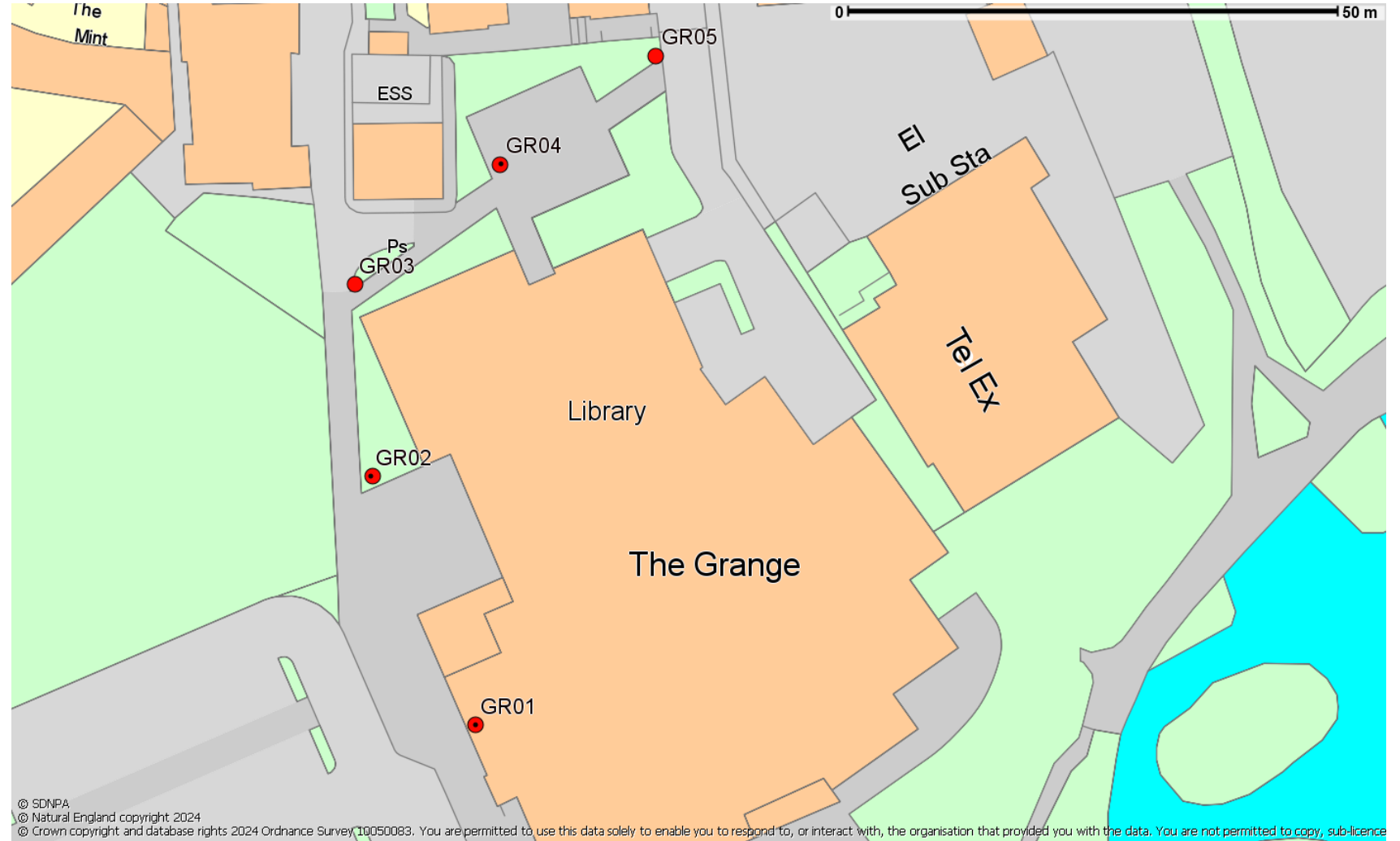
GR02: 488545, 121303

GR03: 488543, 121323

GR04: 488558, 121335

GR05: 488574, 121346

● Individual sign locations



Wall-mounted 'Welcome' sign

Sign ID: GR01

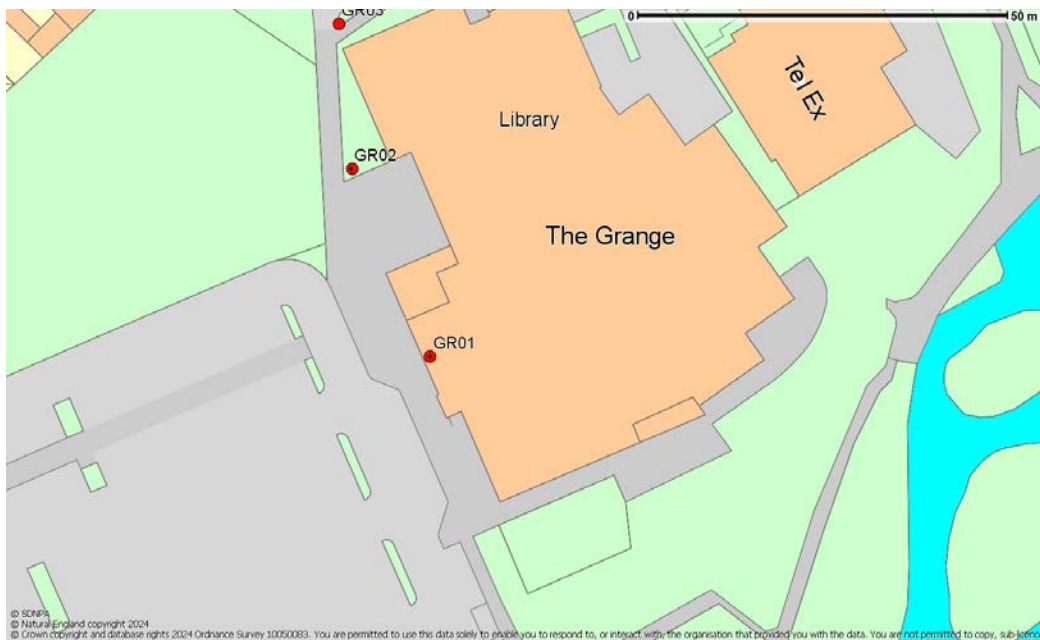
Easting 488555 **Northing** 121277

Location ref: Mounted to the wall of The Grange building, facing out to the car park.

Dimensions: Width: 3000mm x Height: 1000mm

Materials: Powder-coated aluminium (imitation Corten steel)

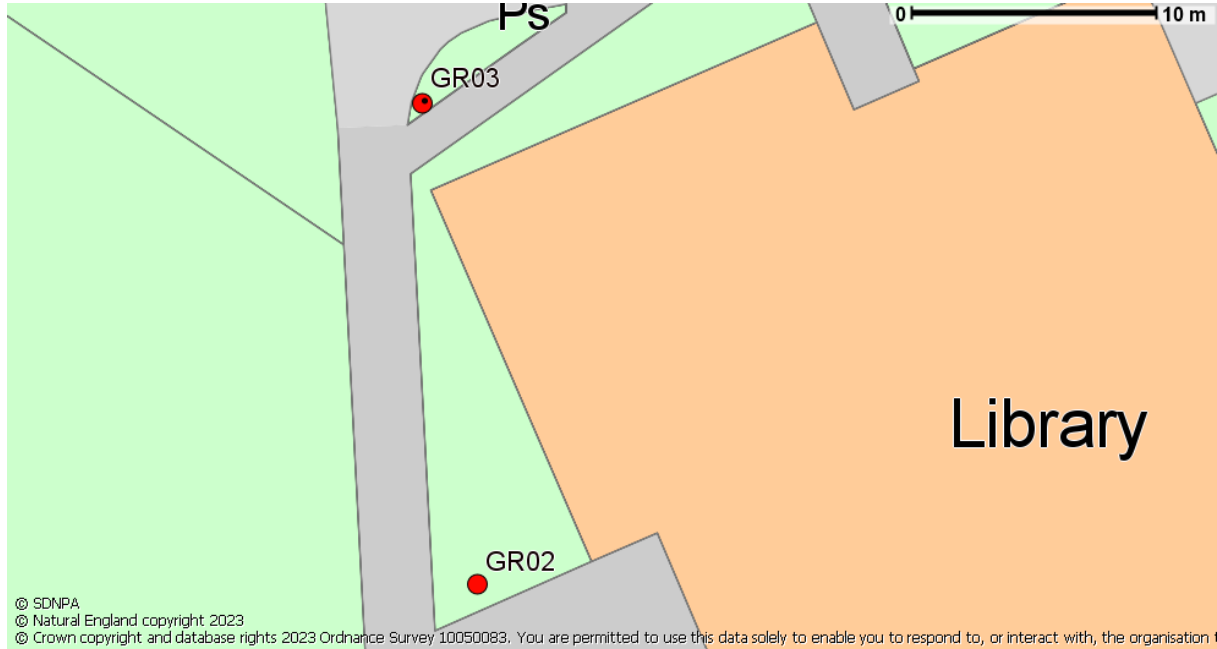
● Sign location



Lectern-mounted interpretation panel

Sign ID: GR02
Easting 488545 **Northing** 121303
Location ref: Freestanding on triangle of grass to the right of walkway.
Dimensions: Panel: 841 x 594 mm, Lectern: H: 1035mm at highest point, W: 1000mm
Materials: Aluminium and Corten steel

● Sign location



© SDNPA
© Natural England copyright 2023
© Crown copyright and database rights 2023 Ordnance Survey 10050083. You are permitted to use this data solely to enable you to respond to, or interact with, the organisation



Artist's impression – actual content may vary.

Waymarker

Sign ID: GR03

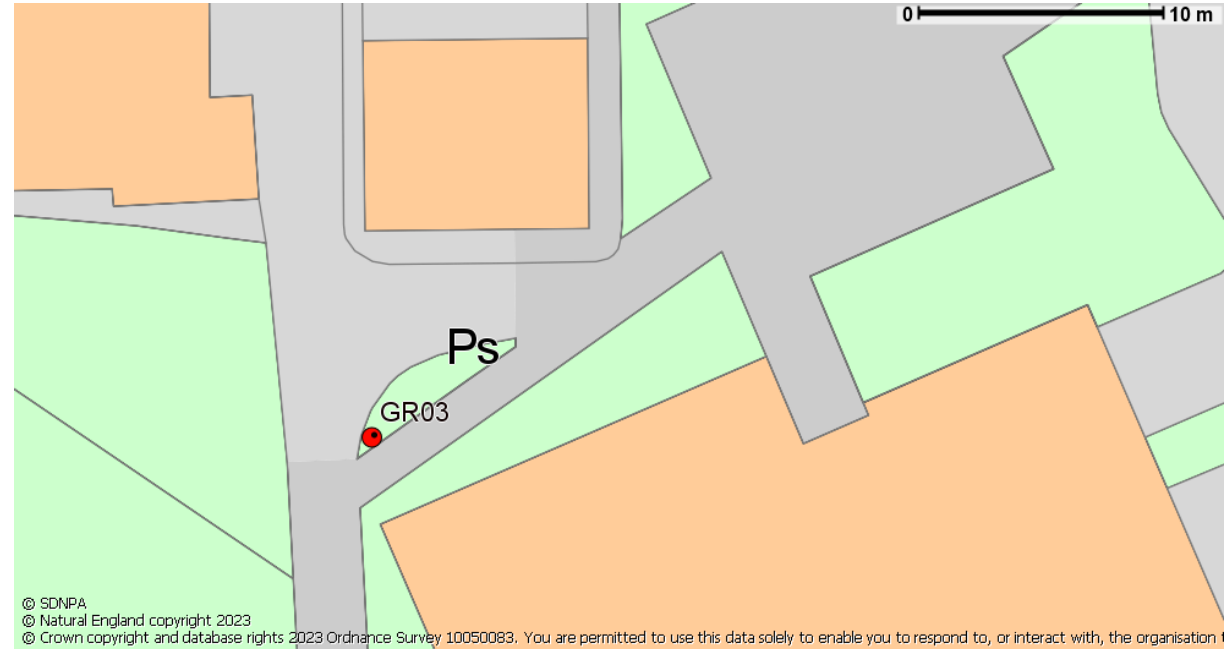
Easting 488543 **Northing** 121323

Location ref: At fork of path and entrance to 'green walkway'.

Dimensions: 900mm from ground

Materials: Timber topped with powder-coated aluminium

● Sign location



For illustrative purposes only – actual text will differ. Taken from manufacturer's website

Lectern-mounted interpretation panel

Sign ID: GR04

Easting 488558 **Northing** 121335

Location ref: In 'green walkway' on grass area.

Dimensions: Panel: 594 x 420mm, Lectern: W: 694mm, H: 1035mm at highest point

Materials: Aluminium and Corten steel

● Sign location



For illustrative purposes only – actual text will differ. Taken from manufacturer's website

Waymarker

Sign ID: GR05

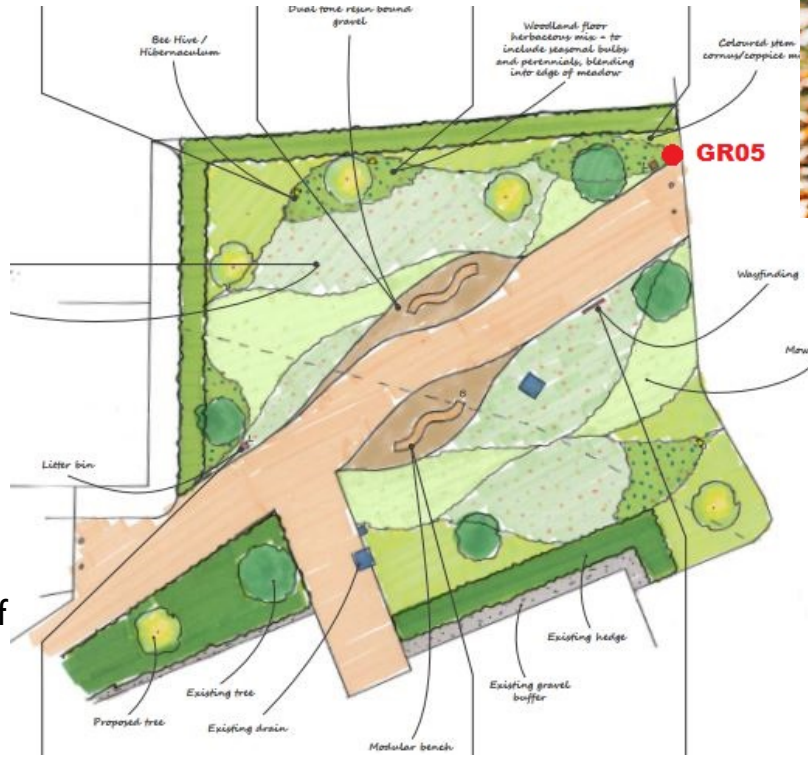
Easting 488574 **Northing** 121346

Location ref: At end of green walkway, heading towards Post Office.

Dimensions: 900mm from ground

Materials: Timber topped with powder-coated aluminium

● Sign location



Artist's impression of planned scheme

