

# Specification

**Construction -**  
Sliding doors & fixed glazing are manufactured from Ultrafine aluminium sliding door profiles including pressed aluminium sub sills

**Finish -**  
All aluminium profiles are Polyester Powder Coated - RAL T.B.C. 30% Gloss

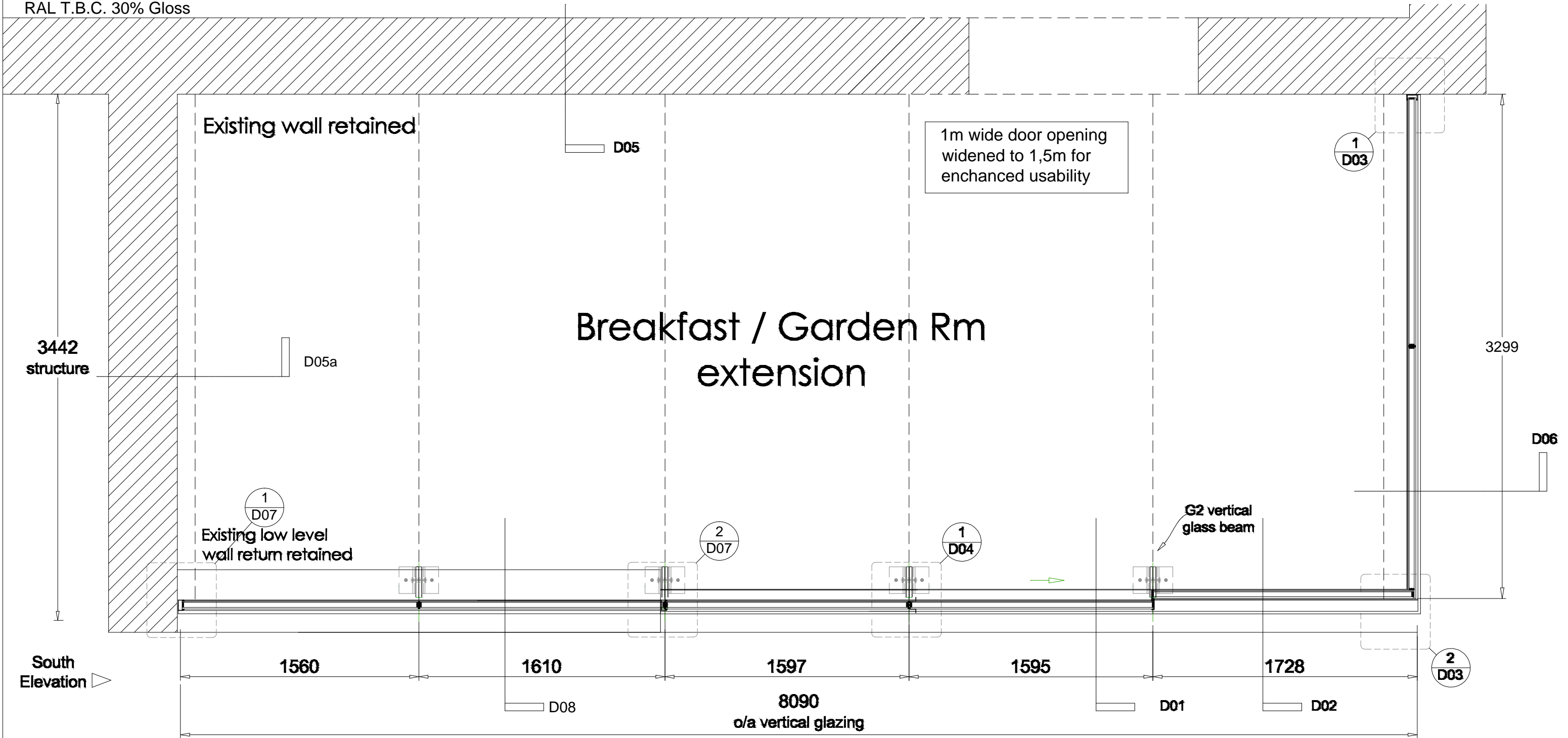
**Sealant -**  
Perimeter - Low modulus silicone sealant  
Glass joints - Black Low modulus silicone sealant - T.B.C.  
Structural sealant - Black Sikasil SG500 or SG20 structural silicone sealant

**Glazing -**  
G1 - 50mm double glazed units  
10mm clear toughened glass outer  
34mm argon gas filled cavity  
6mm clear toughened glass inner

Ultrafine door fittings are to include -

- High performance heavy duty brass wheeled pivot rollers
- A high security deadlock, thumbturn internally europrofile cylinder

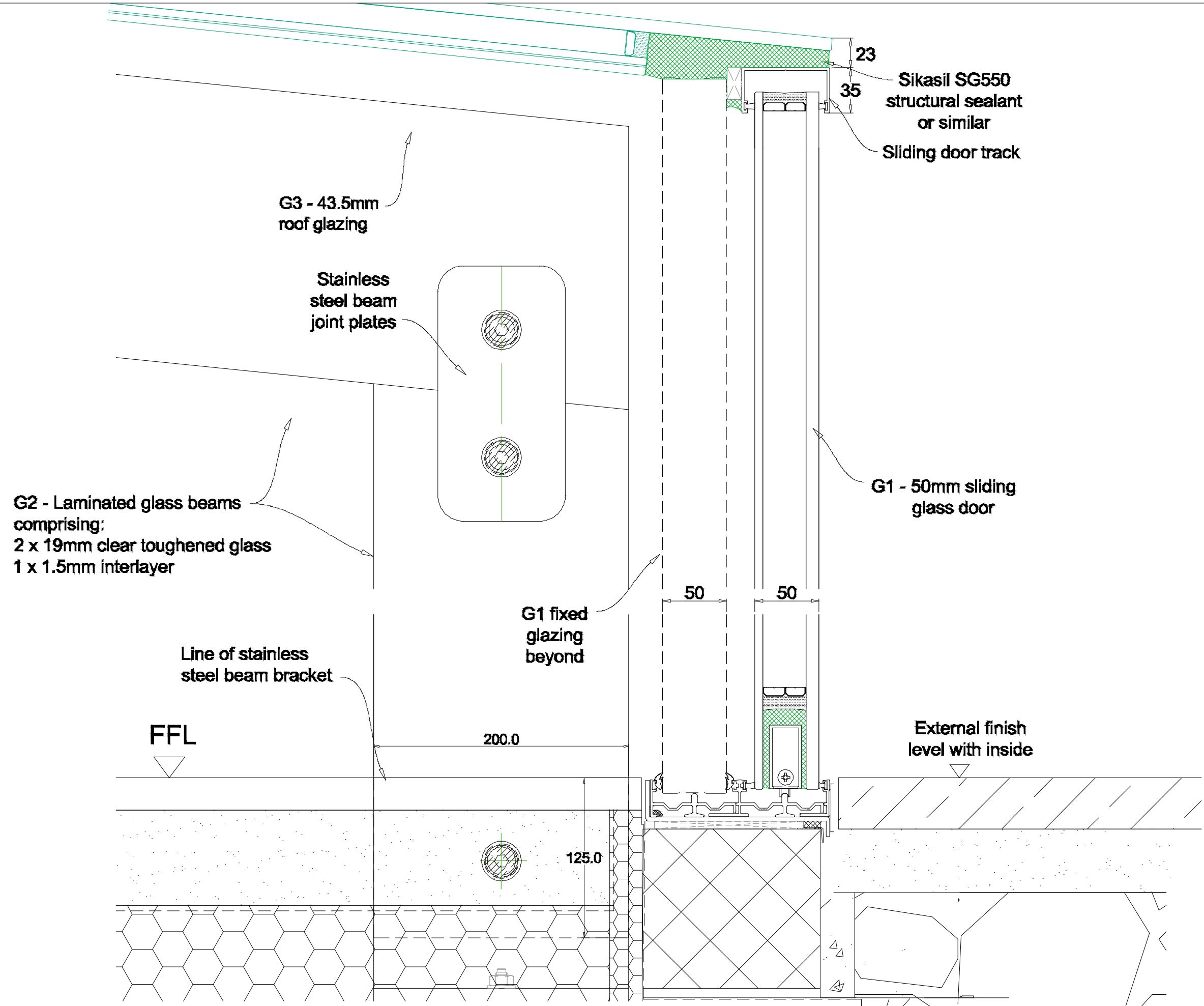
Extruded aluminium pull handles.



## Vertical glazing plan

REV	DATE	AMENDMENT	Unit 26 Old Mills Industrial Estate Paulton, BS39 7SU	<b>THE FRAMELESS GLASS COMPANY</b>  Tel: 01225 952020 <b>ULTRAFINE</b>	PROJECT: Manor Farmhouse, Coxbridge	DETAIL: Glazing Details	DRAWN: AK	CHECKED:
P01	Sep 21	First Issue					SCALE: 1:25 @ A3	DATE: Jan '23
P02	23.01	Details revised as per client comments					DRAWING NO: PL1	REV: P02

1  
D01



2  
D01

Viewed From Outside

REV	DATE	AMENDMENT
P01	05.12	First Issue
P02	07.02	Details revised as per client comments

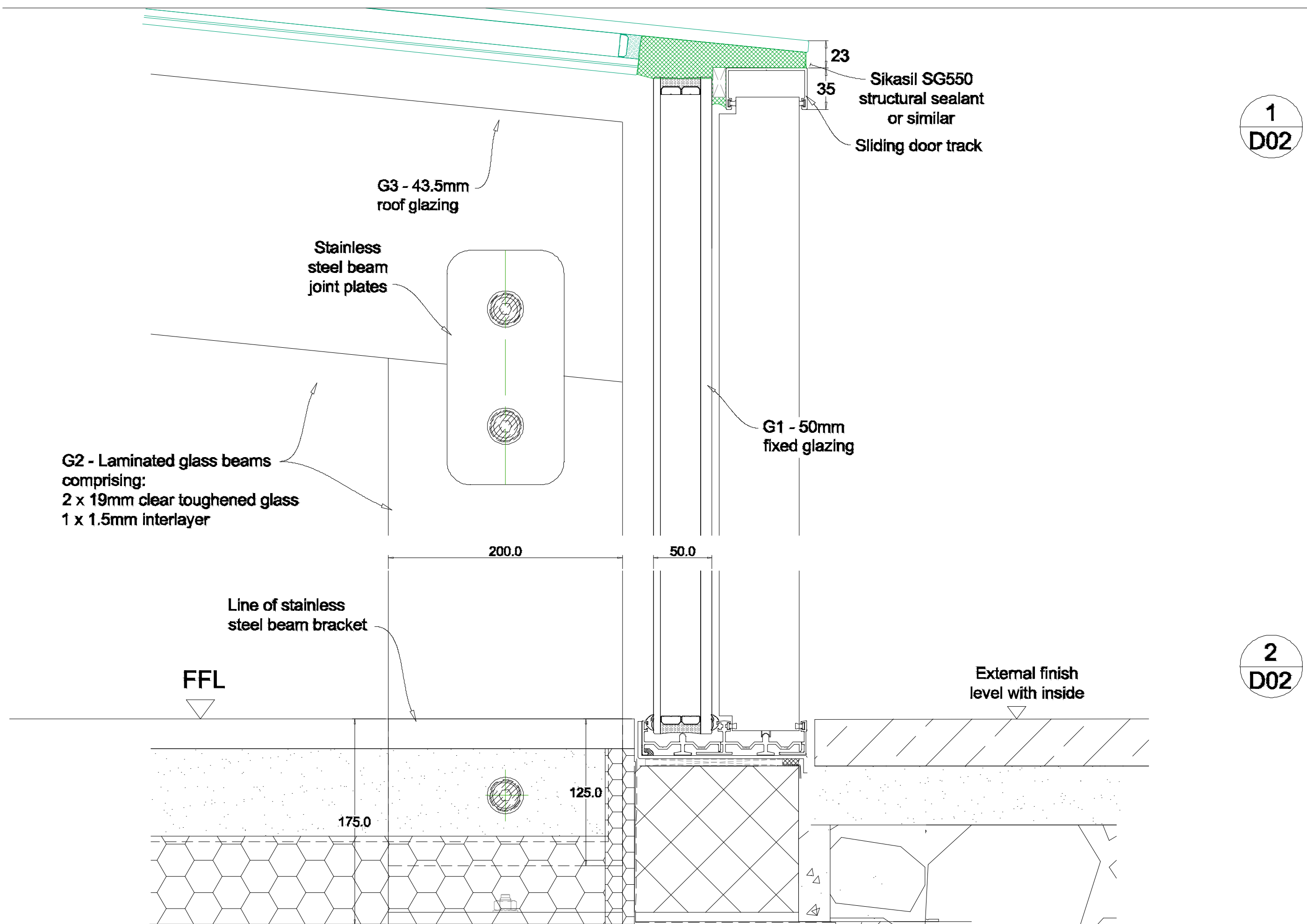
Unit 26 Old Mills  
Industrial Estate  
Paulton, BS39 7SU

THE FRAMELESS  
GLASS COMPANY   
Tel: 01225 952020  
ULTRAFINE 

PROJECT: Manor Farmhouse,  
Coxbridge

DETAIL: Glazing Details

DRAWN: AK	CHECKED:
SCALE: 1:3 @ A3	DATE: Dec '23
DRAWING NO: D01	REV: P02



1  
D02

2  
D02

Viewed From Outside

REV	DATE	AMENDMENT
P01	05.12	First Issue
P02	07.02	Details revised as per client comments
P03	07.02	Details revised as per client comments

Unit 26 Old Mills  
Industrial Estate  
Paulton, BS39 7SU

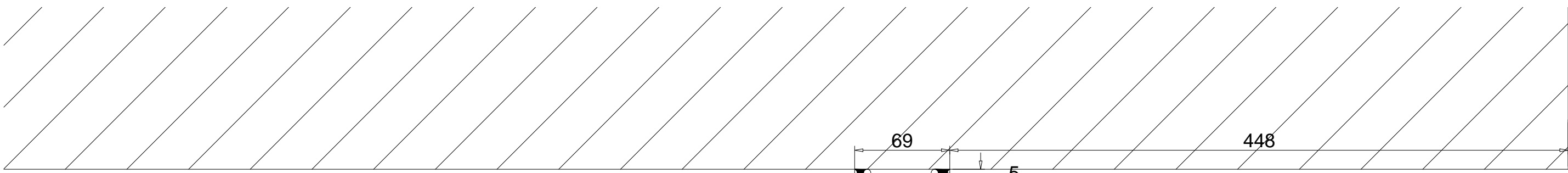
THE FRAMELESS  
GLASS COMPANY   
Tel: 01225 952020  
ULTRAFINE 

PROJECT: Manor Farmhouse,  
Coxbridge

DETAIL: Glazing Details

DRAWN: AK  
SCALE: 1:3 @ A3  
DRAWING NO: D02

CHECKED:  
DATE: Dec '23  
REV: P03



**Specification**

**Construction -**  
Sliding doors & fixed glazing are manufactured from Ultrafine aluminium sliding door profiles including pressed aluminium sub sills

**Finish -**  
All aluminium profiles are Polyester Powder Coated - RAL T.B.C. 30% Gloss

**Sealant -**  
Perimeter - Low modulus silicone sealant  
Glass joints - Black Low modulus silicone sealant - T.B.C.  
Structural sealant - Black Sikasil SG500 or SG20 structural silicone sealant

FGS17 glazing channel

Perimeter sealant on a foam backing strip

1  
D03

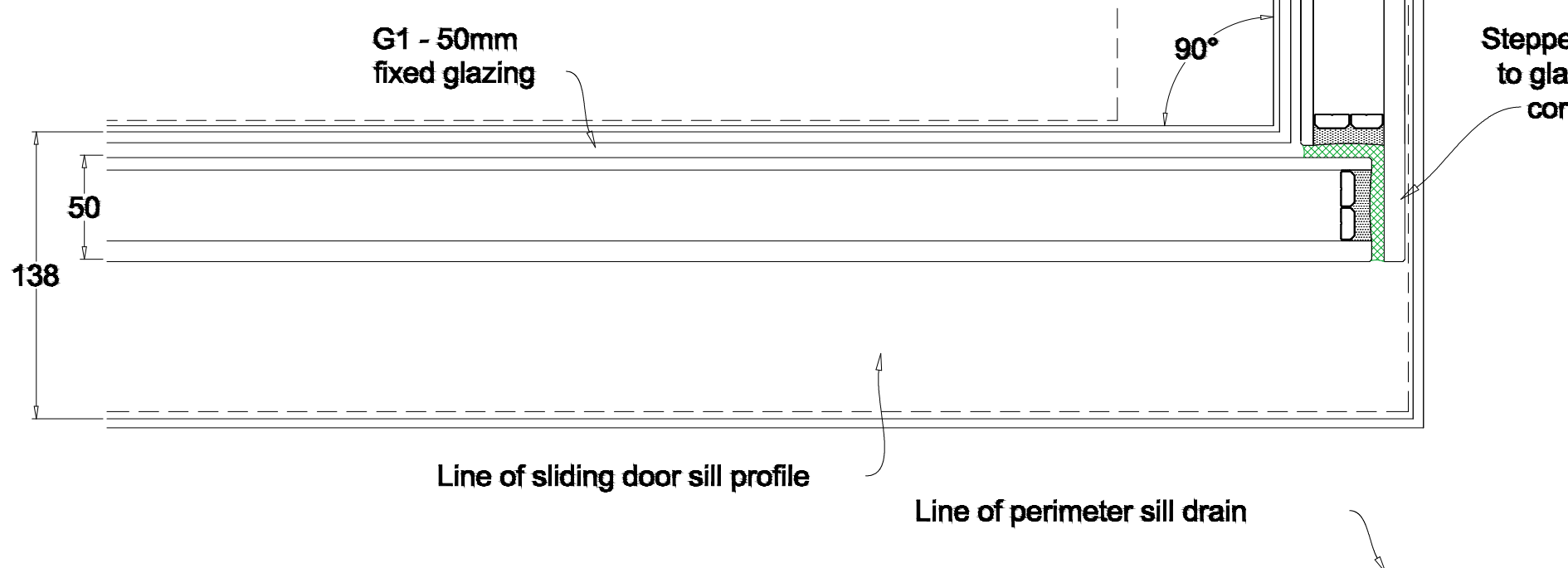
G1 - 50mm fixed glazing

**Glazing -**  
G1 - 50mm double glazed units  
10mm clear toughened glass outer  
34mm argon gas filled cavity  
6mm clear toughened glass inner

Ultrafine door fittings are to include -

- High performance heavy duty brass wheeled pivot rollers
- A high security deadlock, thumbturn internally europrofile cylinder

Extruded aluminium pull handles.



2  
D03

Viewed From Outside

REV	DATE	AMENDMENT
P01	Sep 21	First Issue
P02	09.12	Details revised as per client comments
P03	07.02	Details revised as per client comments

Unit 26 Old Mills  
Industrial Estate  
Paulton, BS39 7SU

THE FRAMELESS GLASS COMPANY   
Tel: 01225 952020  
ULTRAFINE 

PROJECT: Manor Farmhouse,  
Coxbridge

DETAIL: Glazing Details

DRAWN: AK	CHECKED:
SCALE: 1:3 @ A3	DATE: Dec '23
DRAWING NO: D03	REV: P03

## Specification

**Construction -**  
Sliding doors & fixed glazing are manufactured from Ultrafine aluminium sliding door profiles including pressed aluminium sub sills

**Finish -**  
All aluminium profiles are Polyester Powder Coated - RAL T.B.C. 30% Gloss

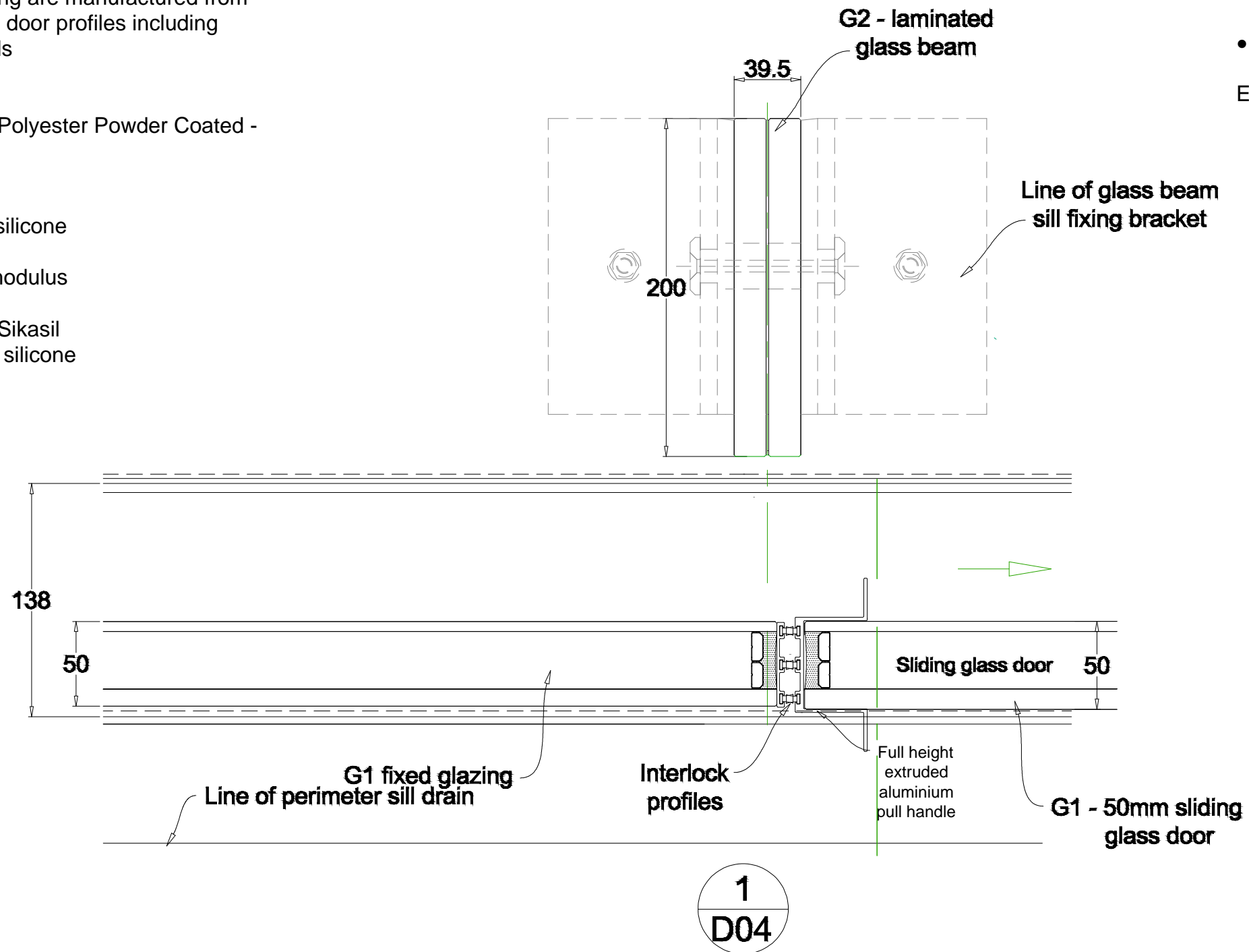
**Sealant -**  
Perimeter - Low modulus silicone sealant  
Glass joints - Black Low modulus silicone sealant - T.B.C.  
Structural sealant - Black Sikasil SG500 or SG20 structural silicone sealant

**Glazing -**  
G1 - 50mm double glazed units  
10mm clear toughened glass outer  
34mm argon gas filled cavity  
6mm clear toughened glass inner

Ultrafine door fittings are to include -

- High performance heavy duty brass wheeled pivot rollers
- A high security deadlock, thumbturn internally europrofile cylinder

Extruded aluminium pull handles.



Viewed From Outside

REV	DATE	AMENDMENT							
P01	Sep 21	First Issue	Unit 26 Old Mills Industrial Estate Paulton, BS39 7SU	THE FRAMELESS GLASS COMPANY Tel: 01225 952020	PROJECT: Manor Farmhouse, Coxbridge	DETAIL: Glazing Details	DRAWN: AK		CHECKED:
P02	07.02	Details revised as per client comments					SCALE: 1:3 @ A3		DATE: Feb '24
							DRAWING NO: D04		REV: P02

**Specification**

**Construction -**  
Sliding doors & fixed glazing are manufactured from Ultrafine aluminium sliding door profiles including pressed aluminium sub sills

**Finish -**  
All aluminium profiles are Polyester Powder Coated - RAL T.B.C. 30% Gloss

**Sealant -**  
Perimeter - Low modulus silicone sealant  
Glass joints - Black Low modulus silicone sealant - T.B.C.  
Structural sealant - Black Sikasil SG500 or SG20 structural silicone sealant

**Glazing -**  
G1 - 50mm double glazed units  
10mm clear toughened glass outer  
34mm argon gas filled cavity  
6mm clear toughened glass inner

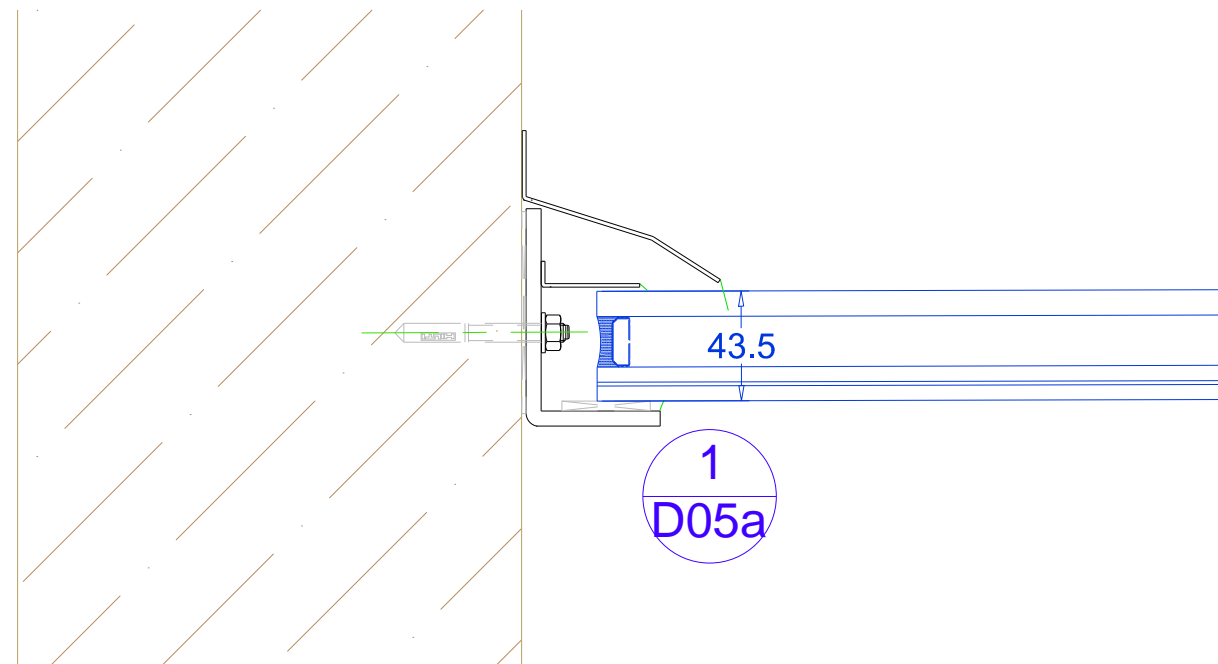
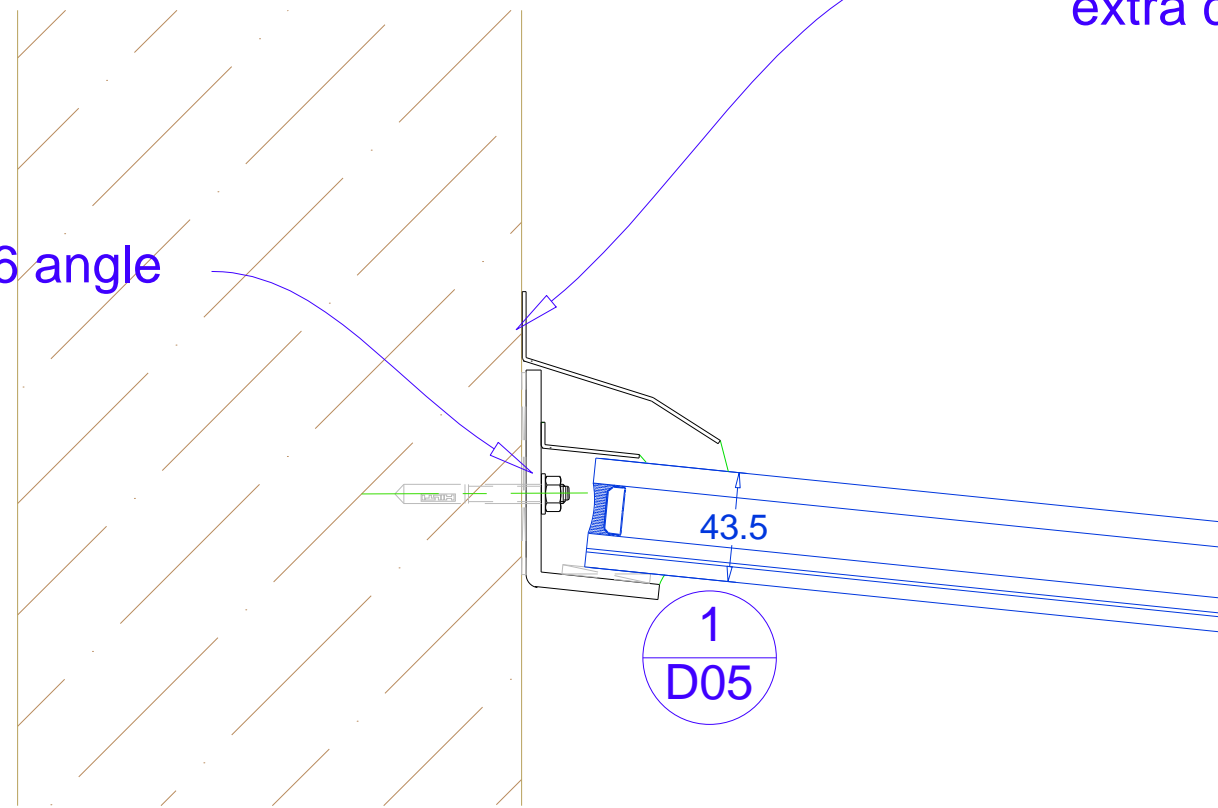
Ultrafine door fittings are to include -

- High performance heavy duty brass wheeled pivot rollers
- A high security deadlock, thumbturn internally europrofile cylinder

Extruded aluminium pull handles.

50x50x6 angle

By others or at extra cost



Viewed From Outside

REV	DATE	AMENDMENT
P01	Sep 21	First Issue
P02	09.01	Details revised as per client comments
P03	07.02	Details revised as per client comments

Unit 26 Old Mills  
Industrial Estate  
Paulton, BS39 7SU

THE FRAMELESS GLASS COMPANY   
Tel: 01225 952020  
ULTRAFINE 

PROJECT: Manor Farmhouse,  
Coxbridge

DETAIL: Glazing Details

DRAWN: AK

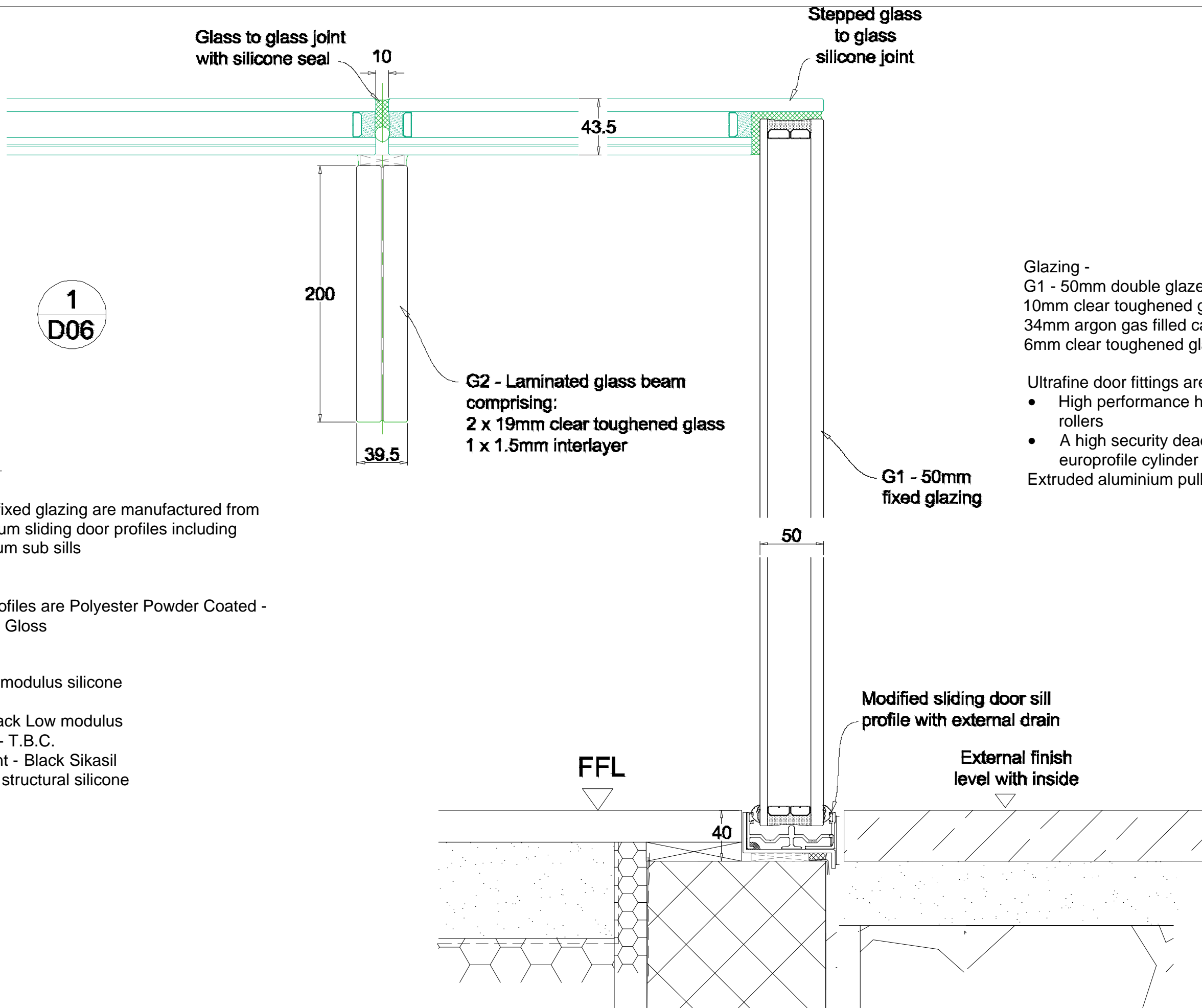
CHECKED:

SCALE: 1:3 @ A3

DATE: Jan '23

DRAWING NO: D05

REV: P03



1  
D06

2  
D06

3  
D06

**Specification**

Construction -  
Sliding doors & fixed glazing are manufactured from Ultrafine aluminium sliding door profiles including pressed aluminium sub sills

Finish -  
All aluminium profiles are Polyester Powder Coated - RAL T.B.C. 30% Gloss

Sealant -  
Perimeter - Low modulus silicone sealant  
Glass joints - Black Low modulus silicone sealant - T.B.C.  
Structural sealant - Black Sikasil SG500 or SG20 structural silicone sealant

Glazing -  
G1 - 50mm double glazed units  
10mm clear toughened glass outer  
34mm argon gas filled cavity  
6mm clear toughened glass inner

Ultrafine door fittings are to include -  
• High performance heavy duty brass wheeled pivot rollers  
• A high security deadlock, thumbturn internally europrofile cylinder  
Extruded aluminium pull handles.

Viewed From Outside

REV	DATE	AMENDMENT
P01		First Issue
P02	07.02	Details revised as per client comments

Unit 26 Old Mills  
Industrial Estate  
Paulton, BS39 7SU

THE FRAMELESS  
GLASS COMPANY   
Tel: 01225 952020  
ULTRAFINE 

PROJECT: Manor Farmhouse,  
Coxbridge

DETAIL: Glazing Details

DRAWN: AK  
SCALE: 1:3 @ A3  
DRAWING NO: D08

CHECKED:  
DATE: Feb '23  
REV: P02



## Specification

**Construction -**  
Sliding doors & fixed glazing are manufactured from Ultrafine aluminium sliding door profiles including pressed aluminium sub sills

**Finish -**  
All aluminium profiles are Polyester Powder Coated - RAL T.B.C. 30% Gloss

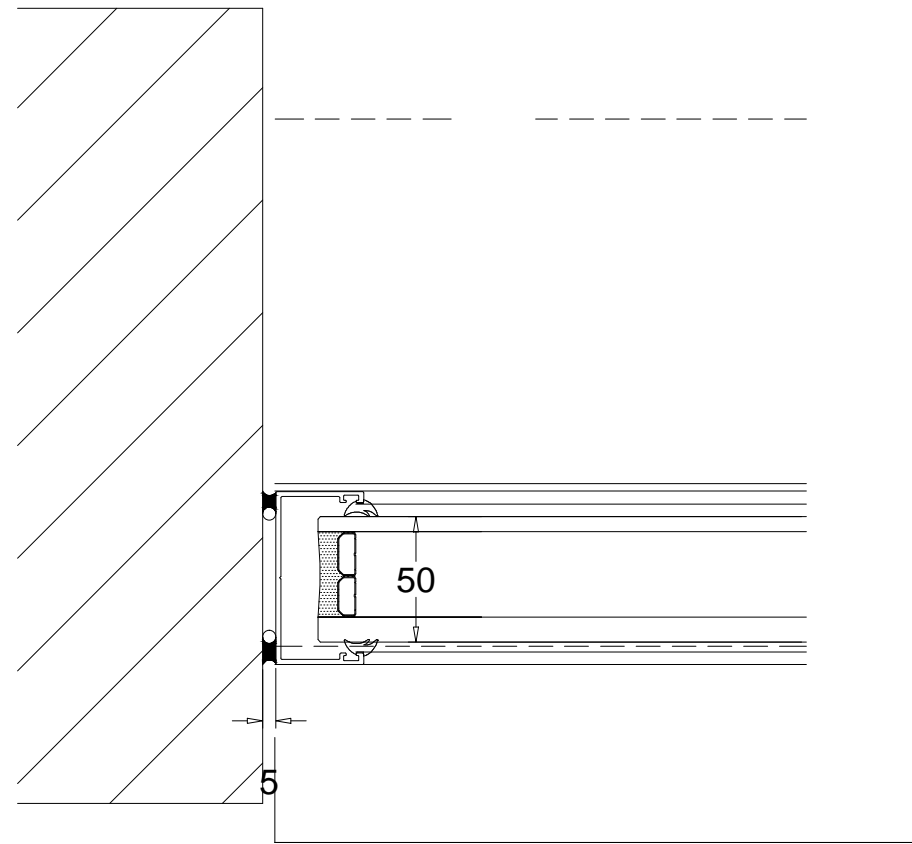
**Sealant -**  
Perimeter - Low modulus silicone sealant  
Glass joints - Black Low modulus silicone sealant - T.B.C.  
Structural sealant - Black Sikasil SG500 or SG20 structural silicone sealant

**Glazing -**  
G1 - 50mm double glazed units  
10mm clear toughened glass outer  
34mm argon gas filled cavity  
6mm clear toughened glass inner

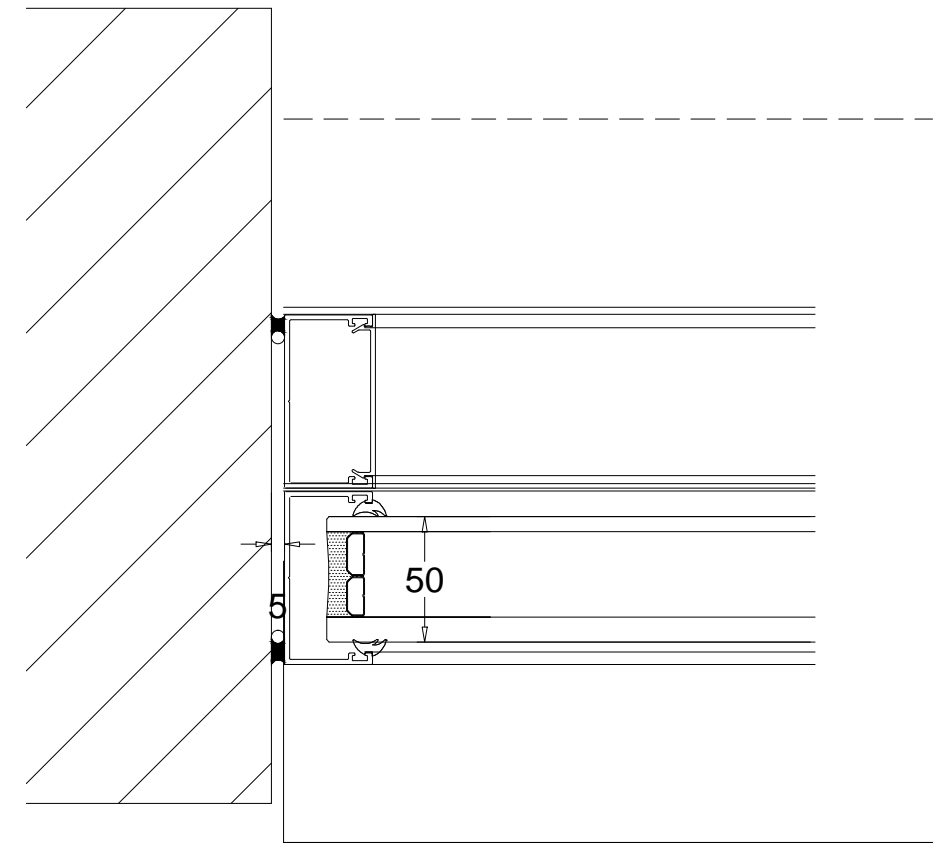
Ultrafine door fittings are to include -

- High performance heavy duty brass wheeled pivot rollers
- A high security deadlock, thumbturn internally europrofile cylinder

Extruded aluminium pull handles.



1  
D07



2  
D07

Viewed From Outside

REV	DATE	AMENDMENT			PROJECT: Manor Farmhouse, Coxbridge	DETAIL: Glazing Details	DRAWN: AK	CHECKED:
P1	09.12	First Issue	Unit 26 Old Mills Industrial Estate Paulton, BS39 7SU	THE FRAMELESS GLASS COMPANY Tel: 01225 952020  ULTRAFINE AI™			SCALE: 1:3 @ A3	DATE: Dec '23
							DRAWING NO: D07	REV: P01

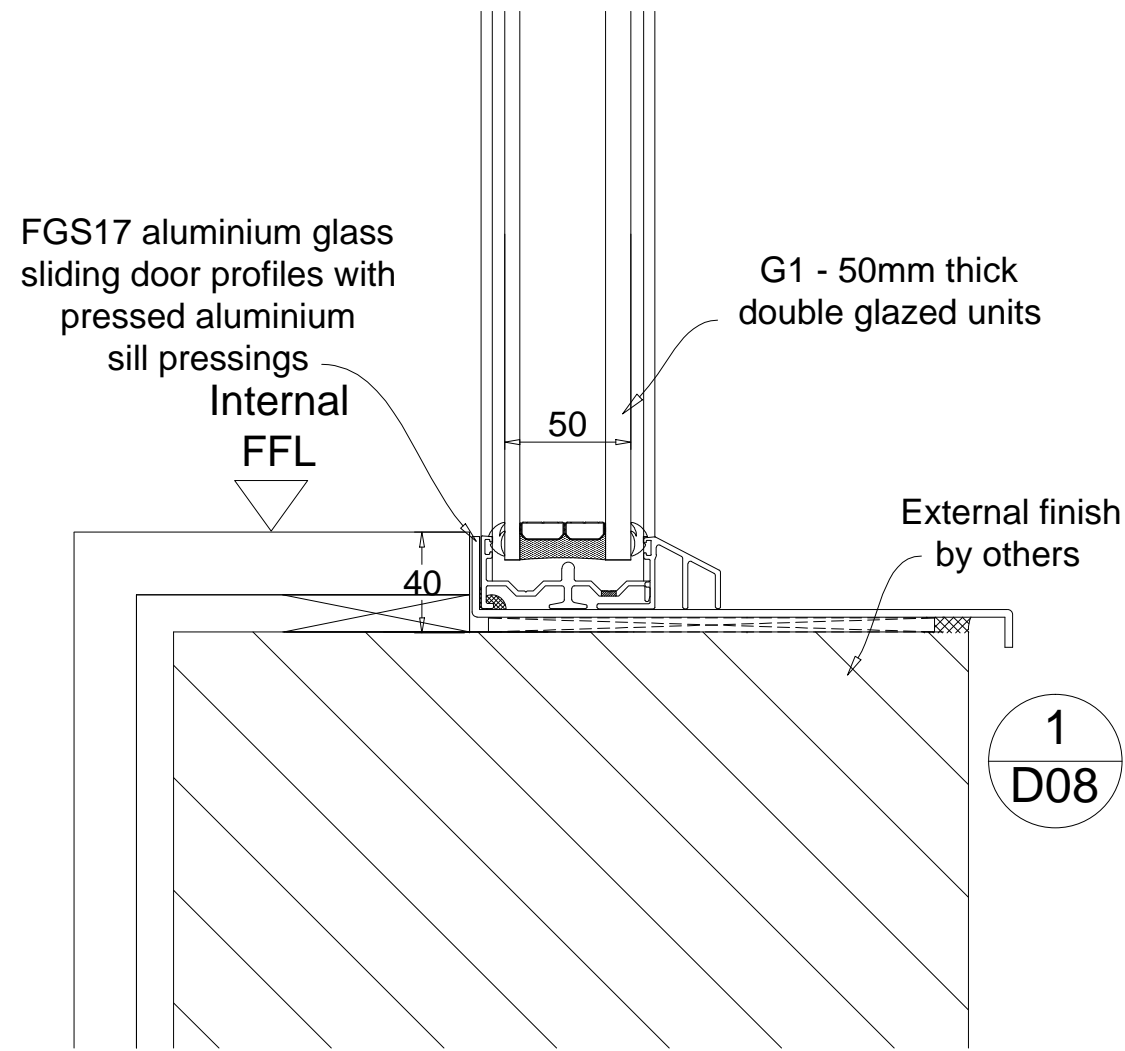


## Specification

**Construction -**  
Sliding doors & fixed glazing are manufactured from Ultrafine aluminium sliding door profiles including pressed aluminium sub sills

**Finish -**  
All aluminium profiles are Polyester Powder Coated - RAL T.B.C. 30% Gloss

**Sealant -**  
Perimeter - Low modulus silicone sealant  
Glass joints - Black Low modulus silicone sealant - T.B.C.  
Structural sealant - Black Sikasil SG500 or SG20 structural silicone sealant



**Glazing -**  
G1 - 50mm double glazed units  
10mm clear toughened glass outer  
34mm argon gas filled cavity  
6mm clear toughened glass inner

Ultrafine door fittings are to include -

- High performance heavy duty brass wheeled pivot rollers
- A high security deadlock, thumbturn internally europrofile cylinder

Extruded aluminium pull handles.

Viewed From Outside

REV	DATE	AMENDMENT			PROJECT: Manor Farmhouse, Coxbridge	DETAIL: Glazing Details	DRAWN: AK	CHECKED:
P1	07.02	First Issue	Unit 26 Old Mills Industrial Estate Paulton, BS39 7SU	<b>THE FRAMELESS GLASS COMPANY</b> Tel: 01225 952020 <b>ULTRAFINE AI</b>			SCALE: 1:3 @ A3	DATE: Feb '23
							DRAWING NO: D08	REV: P01