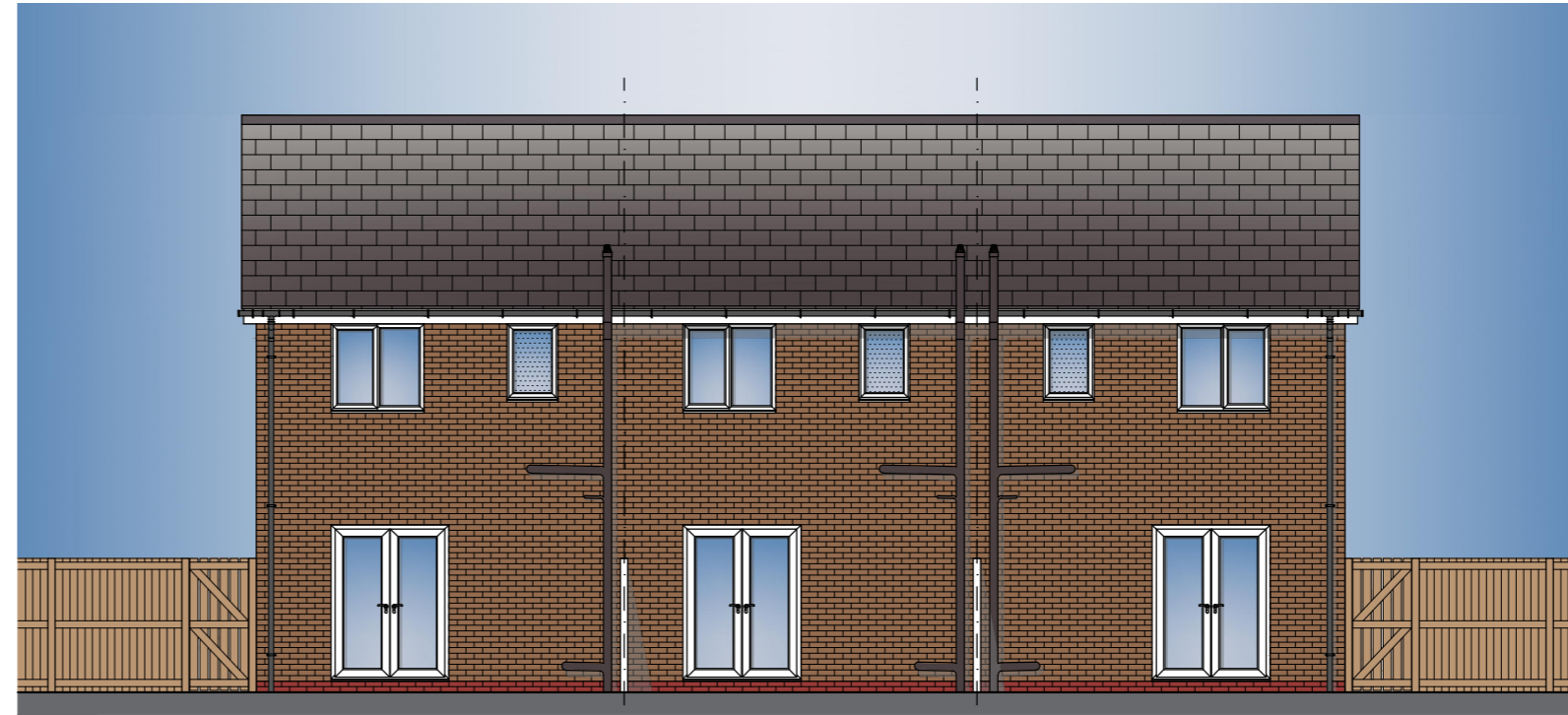


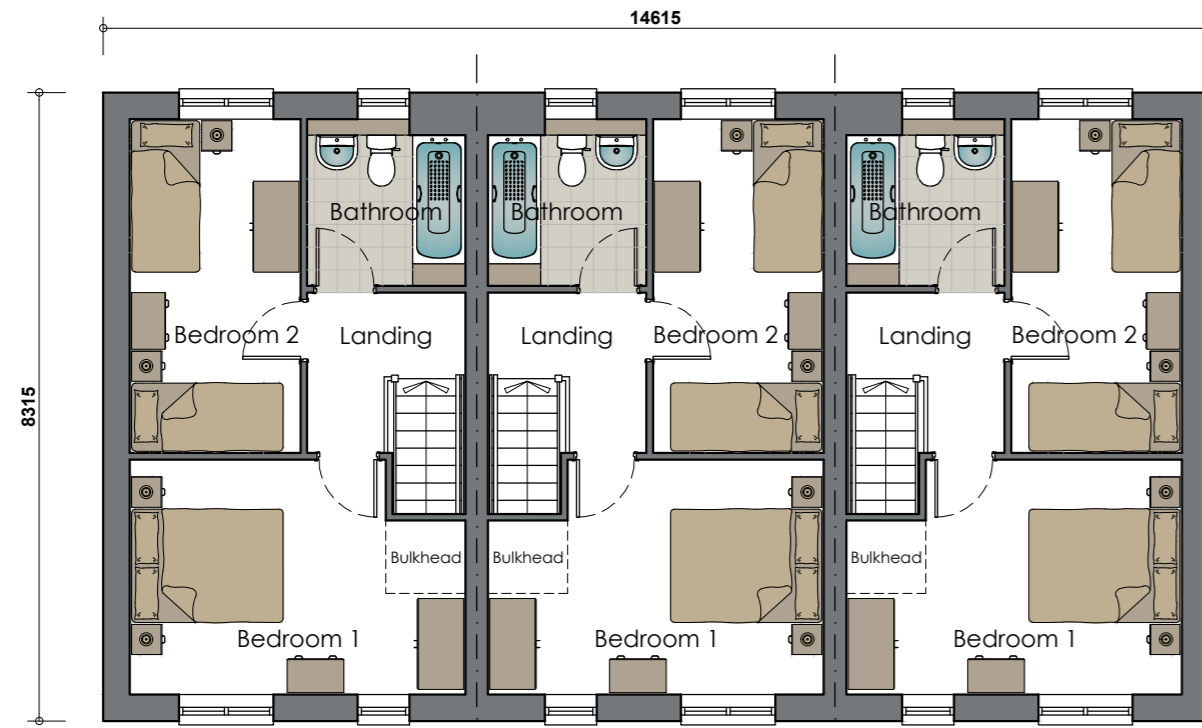
2B4P 68 - Terrace of 3 (AS/OPP/OPP) - 2 Bedroom 4 Person House Type (68m²)



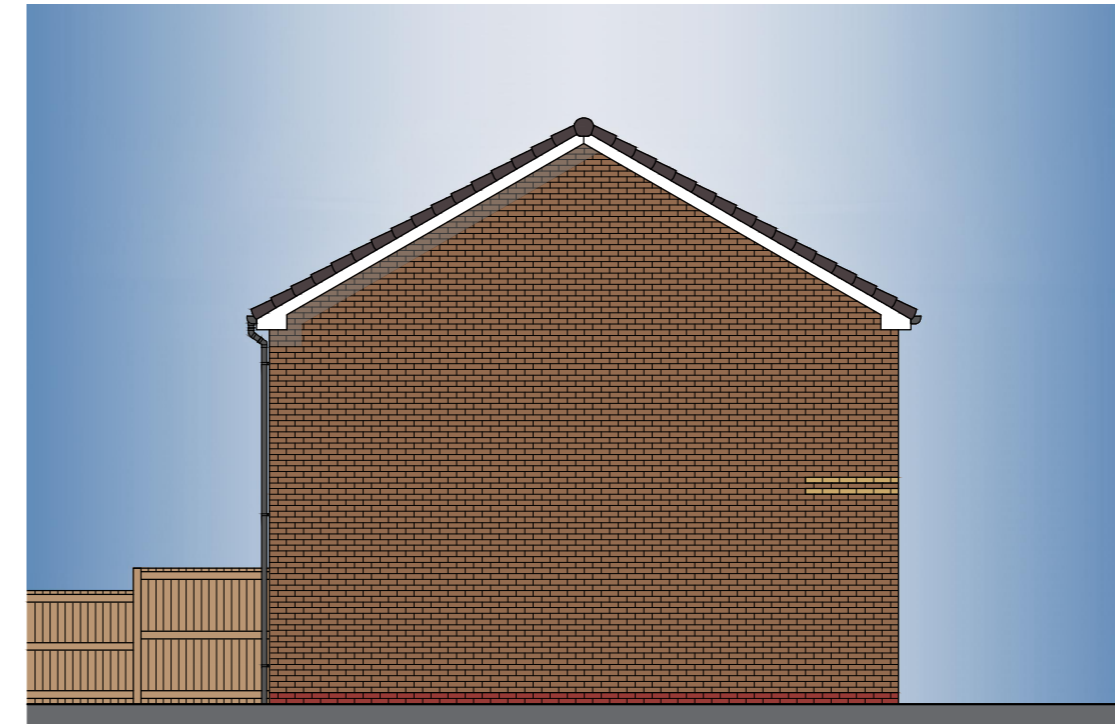
2B4P 68 (AS) 2B4P 68 (OPP) 2B4P 68 (OPP)
FRONT ELEVATION - Terrace of 3



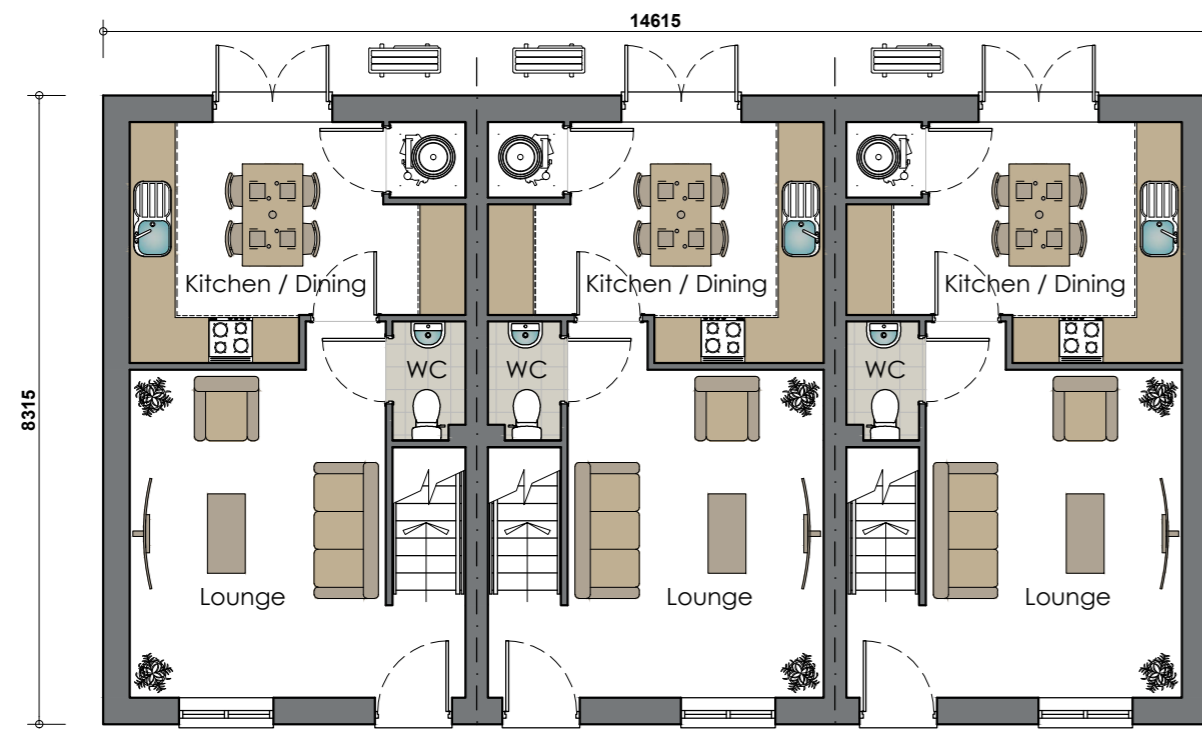
2B4P 68 (OPP) 2B4P 68 (OPP) 2B4P 68 (AS)
REAR ELEVATION - Terrace of 3



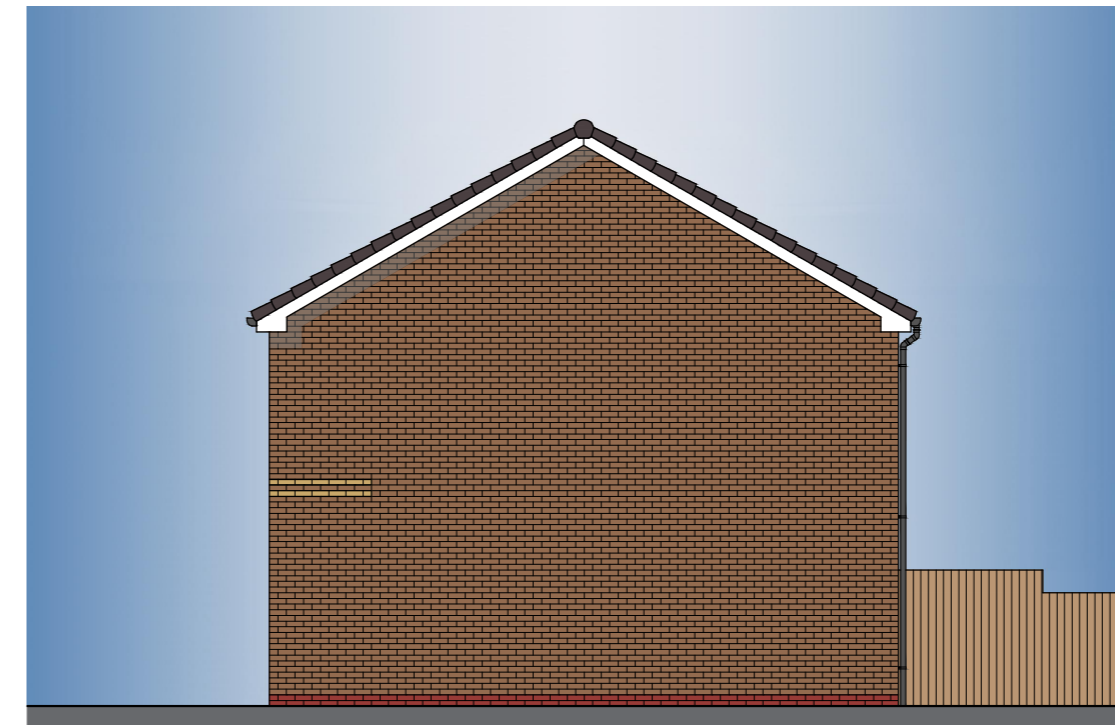
2B4P 68 (AS) 2B4P 68 (OPP) 2B4P 68 (OPP)
FIRST FLOOR PLAN - Terrace of 3



2B4P 68 (AS)
SIDE ELEVATION - Terrace of 3




2B4P 68 (AS) 2B4P 68 (OPP) 2B4P 68 (OPP)
GROUND FLOOR PLAN - Terrace of 3



2B4P 68 (OPP)
SIDE ELEVATION - Terrace of 3

Plot No's - 23,24 & 25

REV	DATE	DRAWN	DESCRIPTION	ARCH CHECK	ENG CHECK
-	-	-	-	-	-
TITLE 2 BED 4 PERSON TERRACE OF 03 HOUSE TYPE (68m²) PROPOSED FLOOR PLANS & ELEVATIONS					
		Breck Homes 20 Sceptre Court Bamber Bridge Preston PR5 6AW tel: 01253 687 010 web: www.breck.co.uk/homes hello@breck.co.uk			
PROJECT: ROSEMOUNT AVE, PREESALL					
DATE:	SCALE:	JOB REF:	DRAWING NUMBER:	REV:	
FEB.24	1:100 @ A2	-	P19 - Plots 23-24 & 25	-	