

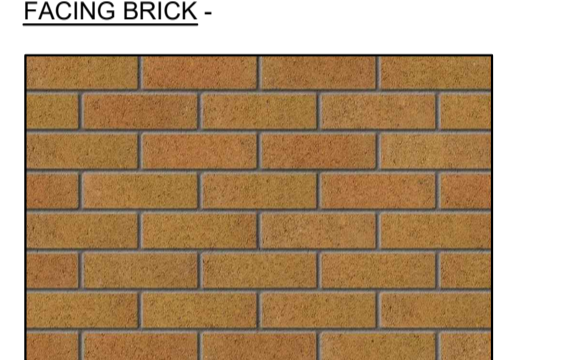
- MATERIALS - TYPE A**
- FACING BRICK - Marshalls Winterbourne Berry
 - DETAIL BRICK - Marshalls Amberley Corn
 - ROOF TILES - Calderdale - Colour Light Grey
 - SOFFIT/FASCIA - White UPVC
 - RAINWATER GOODS - Black Half Round UPVC
 - WINDOWS - White UPVC
 - FRONT DOOR - Single window door

- MATERIALS - TYPE B**
- FACING BRICK - Marshalls Amberley Corn
 - DETAIL BRICK - Marshalls Winterbourne Berry
 - ROOF TILES - Calderdale - Colour Light Grey
 - SOFFIT/FASCIA - White UPVC
 - RAINWATER GOODS - Black Half Round UPVC
 - WINDOWS - White UPVC
 - FRONT DOOR - Single window door

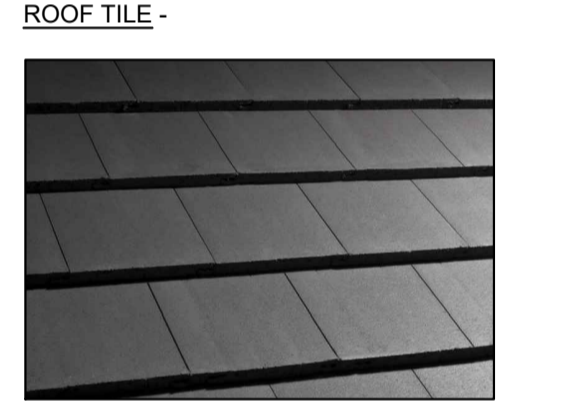
MATERIALS KEY: -



Marshalls - Winterbourne Berry



Marshalls - Amberley Corn



Calderdale or Similar, Colour Light Grey

| REV | DATE | DRAWN | DESCRIPTION | APPROV | TRC |
|-----|------|-------|-------------|--------|-----|
| | | | | | |

TITLE: **MATERIALS DISTRIBUTION PLAN**

Breck Homes
 211 Scapellato Court
 Bamber Bridge
 Preston
 PR3 5AW
 Tel: 01524 587 000
 Fax: 01524 587 001
 www.breck.co.uk
 info@breck.co.uk

PROJECT: **ROSEMOUNT AVENUE, PREESALL**

| DATE | SCALE | JOB REF | DRAWING NUMBER | REV |
|--------|------------|---------|-----------------------------------|-----|
| FEB 24 | 1:500 @ A1 | - | P02 - Materials Distribution Plan | - |