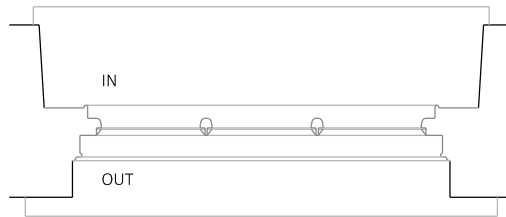


WF.01



Painted timber, single glazed, vertical sliding sash window, lower casement should open, top casement is fixed. Ovolo moulded frame and slim ovolo glazing bars, putty glazed. The meeting rail to the upper casement appears to have dropped slightly in the middle and previous repairs have included replacement sections of framing without a moulded detail. The timber sill sits on the stone sill. The timber sill, meeting rails and lower vertical portion of the outer frame all show signs of rot and deterioration. In its present condition it is not possible to safely open the window.

The proposal is to repair the timber sill and lower sections of the outer frame, remove the metal angle plates, replace the meeting rail to the upper casement with a section to match the ovolo moulded framing, areas of rot and damp timber to be cut back to sound wood, new matching timber sections to be pieced in and the entire window painted white to match the existing finish. The existing panes of glass to be retained. Extent of repairs to be agreed with specialist joiner.

To be fitted with new magnetically fixed secondary glazing and draught strip, see detail drawing 72-D-12



WF.01 meeting rail to upper fixed casement has rusting metal angle repairs



WF.01 bottom rail to lower opening casement has rusting metal angle repair



WF.01 meeting rail to upper fixed casement sections of moulded glazing bars have been replaced with squared sections



WF.01 meeting rail to upper fixed casement sections of moulded glazing bars have been replaced with squared sections



WF.01 bottom rail to lower opening casement has rusting metal angle repair and two sections of moulded glazing bar have been replaced with square section



WF.01 bottom rail to lower opening casement two sections of moulded glazing bar have been replaced with square section

# Anna Hammond Architect

5 Springfield, Norton St Philip, Bath, BA2 7NR  
 T: 01373 834439 M: 0772 941 1360  
 E: annahammond@ymail.com

PROJECT  
 5 Farleigh Road, Norton St Philip

CLIENT  
 Val Fox

DRAWING TITLE  
 Existing window WF.01

SCALE  
 1:20@A4

DATE  
 Jan 2024

DRAWING NO. REV.  
 72-D-03



Contractors must check all dimensions on site. Only figured dimensions are to be worked from. Discrepancies must be reported before proceeding. This drawing is copyright. ©