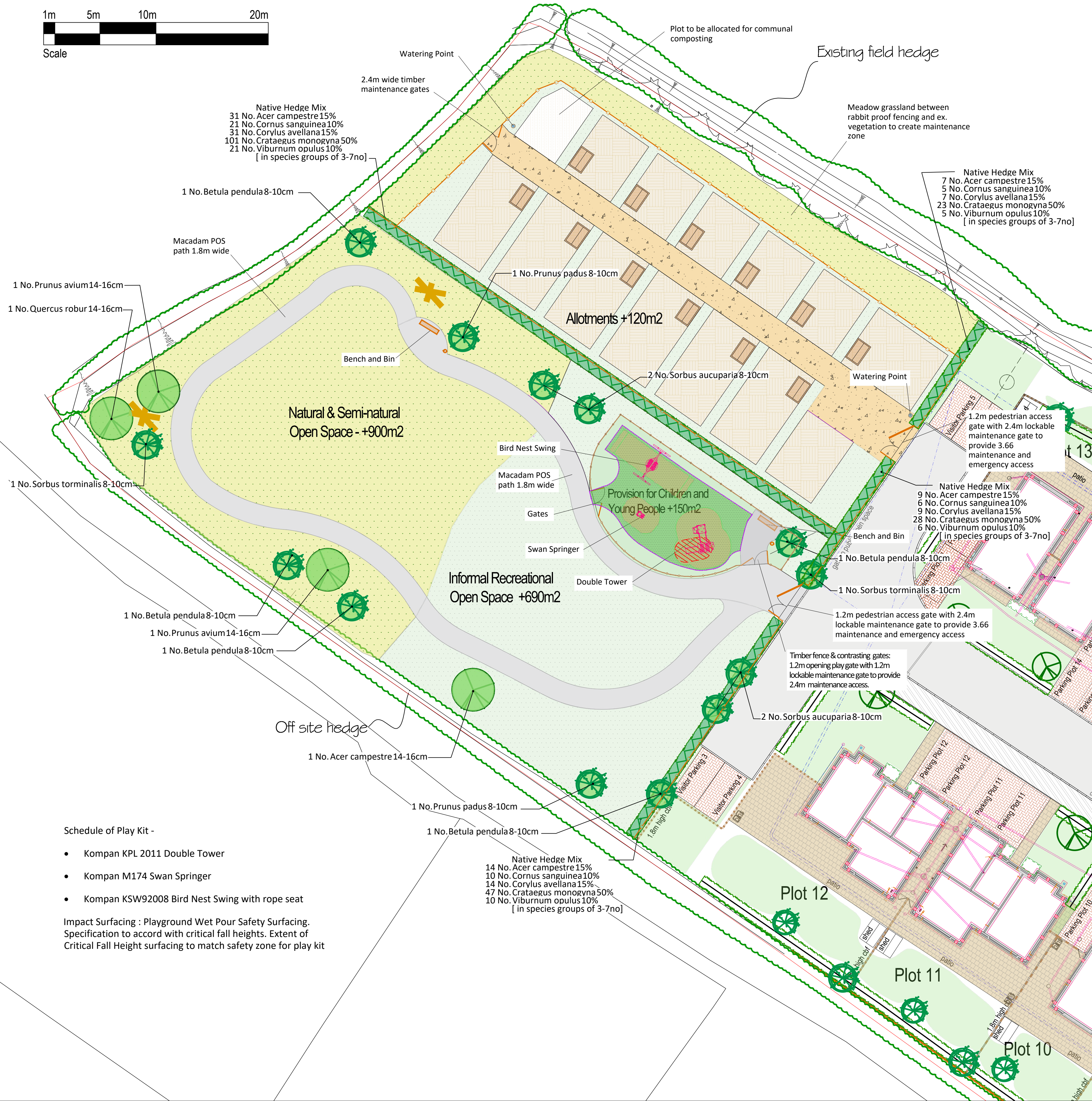
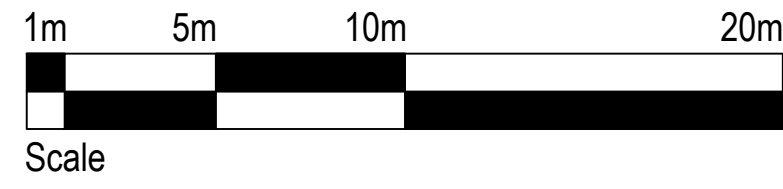


# Ben's Yard - POS Proposals



## POS Key

- Retained Existing Vegetation
- Proposed Trees
- Proposed Native Hedge Planting (planted @ 5/Lm in double staggered row)
- Proposed Meadow Grassland  
Germinal WFG21 Everyday Meadow seed mix
- Proposed Recreational Grassland  
Germinal A19 Amenity Landscape seed mix
- Proposed Wear & Tear Grassland  
Germinal A24 Wear & Tear seed mix
- Wet pour safety surfacing / Impact surfacing : spec to accord with critical fall heights and extent to match safety zone  
See drawing 1434-09 Play Area for further details
- Timber Jacksons Playtime fence and contrasting coloured gates:  
1.2m opening play gate with 1.2m lockable maintenance gate to provide 2.4m access.
- Timber Jacksons nailed square post & x3 rail fence to 1.2m high with Jackson field gates as shown on plan - Fence to be installed with Rabbit proof galv. mesh fencing 600mm above GL and extending 400mm below GL with 200mm toe
- 1.8m timber / steel seat with arm rests; 'Medway Seat' with FSC slats and roof fixing options on macadam surround and Litter bin; 'Derby Eros' colour green by Broxap
- Log pile habitat enhancement for hedgehogs etc 1x0.5m
- POS Paths:  
Macadam paths with PCC pin kerb edgings minimum 1.8m wide - See engineers specification
- Allotments - 300mm approved topsoil over 300mm approved subsoil - See Outline Specification
- Allotment Paths:  
40mm layer of 6mm to dust local limestone over 150mm MOT Type 1 on a geo-textile membrane
- Watering point
- Allotment Sheds - Heritage Sheds Bristol 6ft x 4ft Apex Shed. Shed Base - 7ft x 5ft x 100mm thick concrete slab with brush finish over 100mm consolidate MOT Type 1 sub-base

## PLANTING NOTES

All plant material is to conform to BS3936 and the HTA 'National Plant Specification'. All native plants are to be of local provenance. Delivery and handling of all plant material to be in accordance with CPSE 'Handling and establishment of Landscape Plants 1996'. Planting and seeding operations are to be carried out to the appropriate clauses of BS4428. All plants shall be watered in to field capacity immediately after planting.

## WEED CLEARANCE

Areas to be planted and turfed shall be cleared of any lawn and weed growth physically prior to cultivation operations. For any pernicious weeds or weeds that are likely to re-grow, colonize, out compete or hinder the establishment of the proposed planting scheme seek approval for a method to fully eradicate prior to planting operation.

## TOPSOIL

Imported topsoil to be in accordance with BS3882 - General Purpose Grade. Imported topsoil & site won topsoil to be tested in accordance with BS3882 and for contamination. Submit test result to the Project Manager & Landscape Architect & obtain approval prior to the delivery of any imported topsoil. Should site won topsoil not be in accordance with BS3882 'General Purpose' but is free from contamination and phytotoxic elements seek instruction for the amelioration and enrichment with approved organic matter. Planting areas - Generally 400mm depth clean non-contaminated topsoil, incorporating 100mm depth of BSI PAS 100 compost during final cultivation along with slow release general fertilizer applied at manufacturers recommended rates, over 300mm clean non-contaminated subsoil. Slow release granular fertilizer (eg N-Mag Lite or similar approved ) to be incorporated at manufacturer's recommended rates.

Lawn areas - 150mm screened & ameliorated topsoil over a minimum of 200mm subsoil over ripped subgrade.  
Meadow areas - 100mm depth low fertility topsoil over ripped subgrade

Tree pits target size 1.8x1.8m (min 1m x 1m for fruit trees) x 0.8m consisting of 400mm depth of multipurpose topsoil to meet BS3882:2015 over 400mm depth of clean non-contaminated subsoil. For tree pits within all hard surfacing areas and within soft areas where subsoil is poorly drained or poorly aerated - existing subsoil is to be excavated and replaced with 600mm depth of imported multipurpose subsoil to meet BS8601:2013.

## ALLOTMENT TOPSOIL

Imported and site won topsoil to meet CLEA guidelines for Allotment Land Use. Soil to be tested by a soil scientist who is a member of the Institute of Professional Soil Scientists in order to ascertain imported and / or site won topsoil is fit for Allotment use. Subsoil capping layer to Contamination Consultants specification.

## BARK MULCH

On completion of planting all tree pits hedges and planting beds are to have a 50-100mm depth application of 15-65mm grade shredded Bark Mulch.

## NATIVE HEDGE AND MIX PLANTING

To be pit planted with biodegradable spiral rabbit guards.

## TREES

Trees to be short double staked, except 6-8cm girth to be single staked. Secured using biodegradable hessian strapping eg 'Naturities'. Trees adjacent to hard surfaces /drainage / service runs to be planted with root deflectors or root barriers (eg ReRoot 600)

## SEEDING

Preparation, seeding and immediate aftercare to Germinal recommendations.

## WATERING & MAINTENANCE

All planting and grass is to be watered and maintained by the contractor up to Practical Completion and for a period of 12 months from that date. Refer to the Management and Maintenance document. Any plant or area of turf which dies, or is not thriving during this period is to be replaced by the contractor. All plantings is to be retained in perpetuity, any trees, plants or grass areas that become diseased or die are to be replaced by the management company.

## PLANT SCHEDULE

Trees Species	Girth	Height	Number
Acer campestre	14-16cm	3.5-4.0m Extra Heavy Standard	1
Betula pendula	8-10cm	2.5-3.0m Standard	5
Prunus avium	14-16cm	3.5-4.0m Extra Heavy Standard	2
Prunus padus	8-10cm	2.5-3.0m Standard	2
Quercus robur	14-16cm	3.5-4.0m Extra Heavy Standard	1
Sorbus aucuparia	8-10cm	2.5-3.0m Standard	4
Sorbus torminalis	8-10cm	2.5-3.0m Standard	2

Native Hedge Mix Species	Height	Specification	Density	Percentage	Contribution	Number
Acer campestre	60-80cm	1+1 :BR	4/m	15%		61
Cornus sanguinea	60-80cm	1+1 :BR	4/m	10%		42
Corylus avellana	60-80cm	1u1 :BR	4/m	15%		61
Crataegus monogyna	60-80cm	1+1 :BR	4/m	50%		199
Viburnum opulus	60-80cm	1+1 :BR	4/m	10%		42

Grass Seed Mix as per Germinal's sowing specifications:  
Recreational Grass Mix: Germinal A19  
Amenity Landscape  
Meadow Grass Mix: Germinal WFG21  
Everyday Meadow Mixture  
Wear & Tear Grass Mix: Germinal Seeds  
A24 Wear & Tear

## Schedule of Play Kit -

- Kompan KPL 2011 Double Tower
- Kompan M174 Swan Springer
- Kompan KSW92008 Bird Nest Swing with rope seat

Impact Surfacing : Playground Wet Pour Safety Surfacing. Specification to accord with critical fall heights. Extent of Critical Fall Height surfacing to match safety zone for play kit

Rev F 10.11.23 Allotment sheds and shed bases added to the plan. Specification notes for Allotment topsoil added to notes  
Rev E 19.08.23 POS macadam path extended, Allotment gate size and location adjusted & hard-standing area increased  
Rev D 03.08.23 Housing layout updated

## CAMBIUM : Landscape architecture | Arboricultural consultancy

Project	Ben's Yard		
Title	POS Proposals		
Client	David Cahill Design		
Date	Jan 2022	Drawn	AC
Scale	1:200 @ A1	Checked	MW
Dwg No.	1434-05	Revision	F
		Status	Planning

Cambium, Bankspace 145-147 East Street Bedminster Bristol BS3 4EJ

