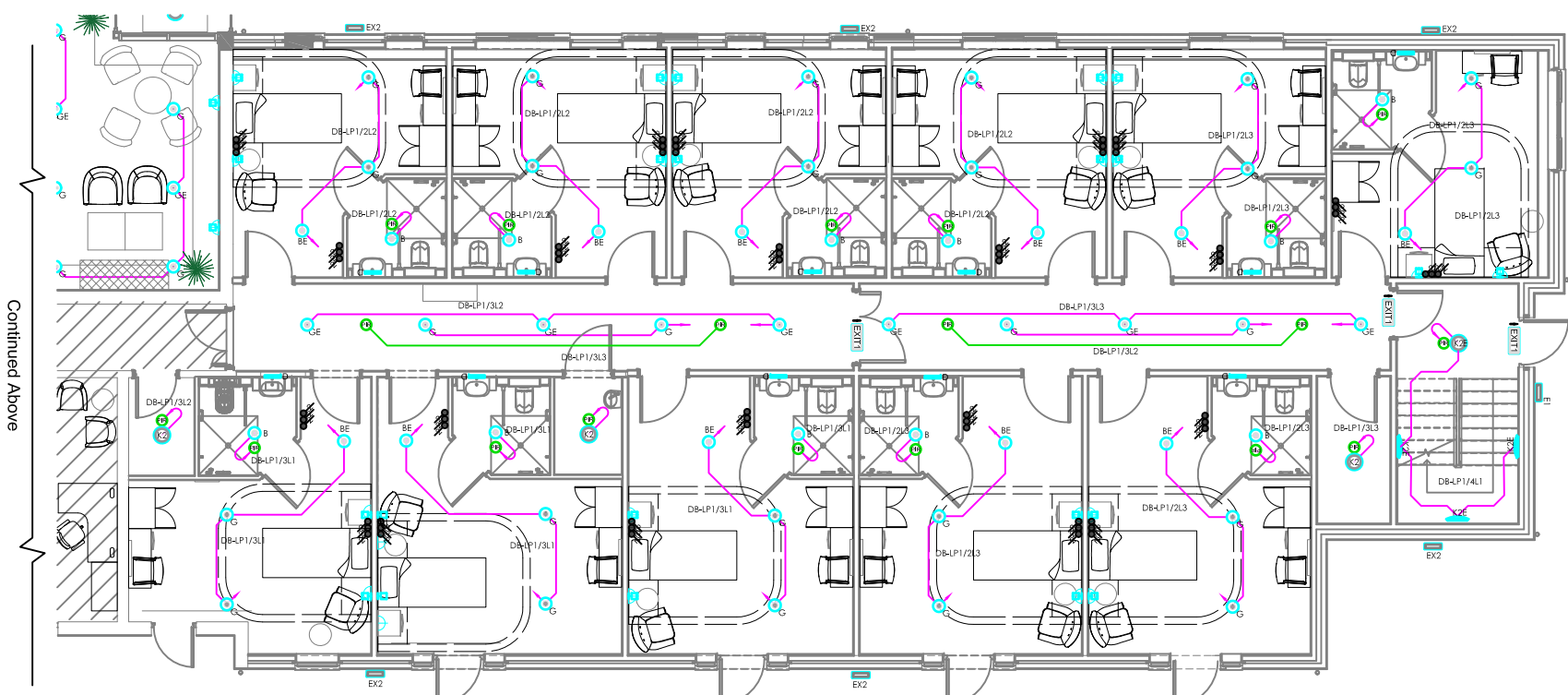


Continued Below



Continued Above

Logos	Symbol	Description
	A	Ceiling mounted 6" single drop down pendant c/w low energy LED lamp L4P Q5 LED B2 6.7W (E0 80W)
	B	Aurora lighting E6 pro 6W fixed dimmable fire rated IP65 downlight 4000K, 3000Lm, 'E' denotes emergency
	C	Aurora lighting Unipac 1200mm 36W IP65 anti-corrosion 4000K, 3000Lm, 'E' denotes emergency
	D	Shaver socket and lights built into furniture provided by others
	F	Aurora lighting duette 600x600 30W troffer, 4000K, 3000Lm, 'E' denotes emergency
	G	Aurora lighting slim-fit 18W IP44 round low profile downlight, 4000K, 1200Lm, 'E' denotes emergency
	H	Aurora lighting versatile 38W 600x600 IP65 panel, 4000K, 3900Lm, 'E' denotes emergency
	K2	Aurora lighting orbital 25W IP66 round bulkhead, 4000K, 1800Lm, 'E' denotes emergency
	M	Interior designer specified pendant
	M	Interior designer specified spot light
	E1	Aurora lighting 5W maintained emergency bulkhead with self-test function, 170Lm, 3H
	EX1	Aurora lighting 4W wall mount slim exit sign with self-test function, 3H, inc legend
	EX2	Aurora lighting 7W recessed exit sign with left/right emergency exit legend
	P	Passive Infra Red Detector c/w minimum 20 mins. run time
	C	Photocell
	TC	Timedock
	K	2 Way Grid Switch 1200mm AFFL, Lu5
	K	Key Switch override
	EX2	Aurora E1ANP103140 100-240V 30W IP65 LED Wall Pack 4000K (Black)

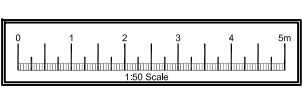
- Notes
- For building services information only.
 - All works shall be carried out in accordance with BS7671 17th edition of the wiring regulations.
 - This drawing shall be read in conjunction with the luminaire schedule & any associated specification.
 - Luminaires selected for bathrooms & en-suites shall be minimum IP44 rated.
 - Emergency lighting to BS5266 Part 1 shall be provided to all areas accessible to the public and areas without natural daylight with the exception of en-suites.
 - External lighting shall be minimum IP65 rated and be controlled via time clock and photocell.
 - All lighting shall be LED any changes to the design intent shall be verified by the Part L S8EM calculation to ensure compliance with the building regulations.
 - Contractor to check co-ordination of all services with individual F&E layouts issued by FF&E specialist.

104	200-000	External lighting schedule
105	101-000	FF&E schedule
106	102-000	Service schedule
107	103-000	Structural schedule
108	104-000	Service schedule



Neale Court Care Home
Lincoln

Lighting
Ground Floor



Client	SGC	Date	19.04.2022	Project	1-50WAG
Author	AMG	Date	19.04.2022	Version	Preliminary
P204-WTD-20-00-DB-E-6300					
					P04