



GROUND FLOOR PLAN

Concept:

- Creating a peaceful and calm open area with possible continuation to the church amenity space in the future.
- Rigid lines set the development within the urban scenery.
- Contemporary stone and timber benches will allow for a social life and create an interesting setting to the proposed buildings.
- Timber benches might be used with grass area, during the lunch breaks.
- Multi stem decorative trees as focal points and narrow street trees to parking.
- Evergreen shrubs and colourful herbaceous and grass planting for all year round interest



PODIUM FLOOR PLAN

Concept:

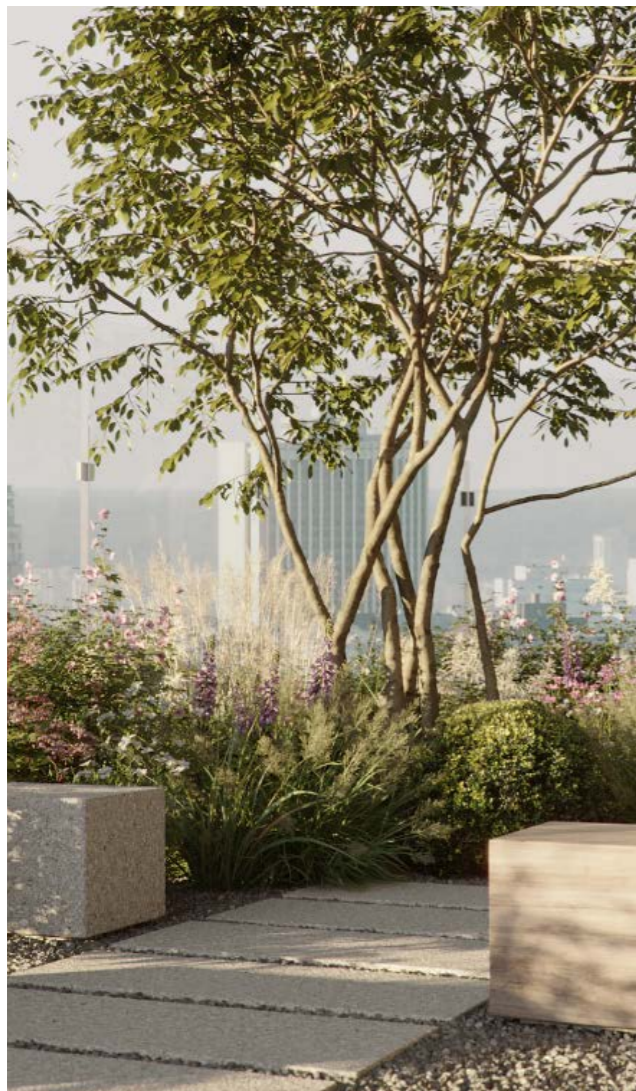
- Creating a safe and spacious play area for younger children with various equipment that develop cognitive and physical skills along with socializing.

-Modern seating with picnic table.

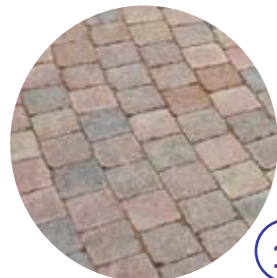
-A peaceful yoga terrace for flexible use.

-Sunbeds to enjoy the views.

-Evergreen shrubs and multi-stem trees, colourful herbaceous and grass planting for all year round interest.



GROUND FLOOR PLAN - WITH EXISTING PARKING



1

Permeable block paving for vehicular access



2

Permeable flag paving for entrances



13

Wildflower mix



14

Groundcovers



15

Climbers



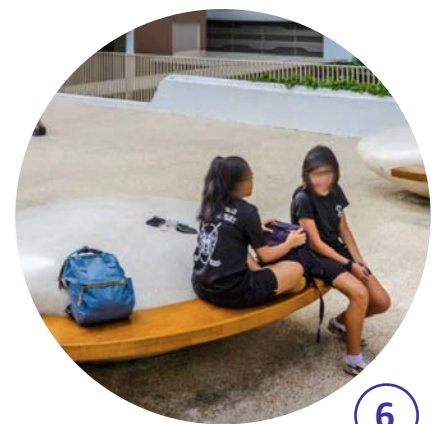
17

Timber stepping stumps



5

Solid timber bench



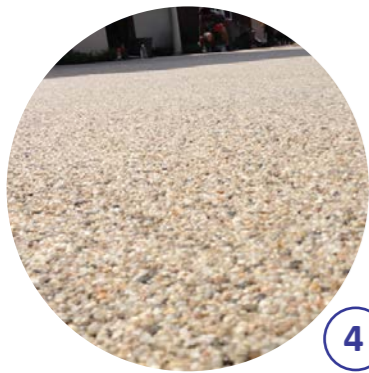
6

Concrete Stone bench



3

Grass cretes to parking places



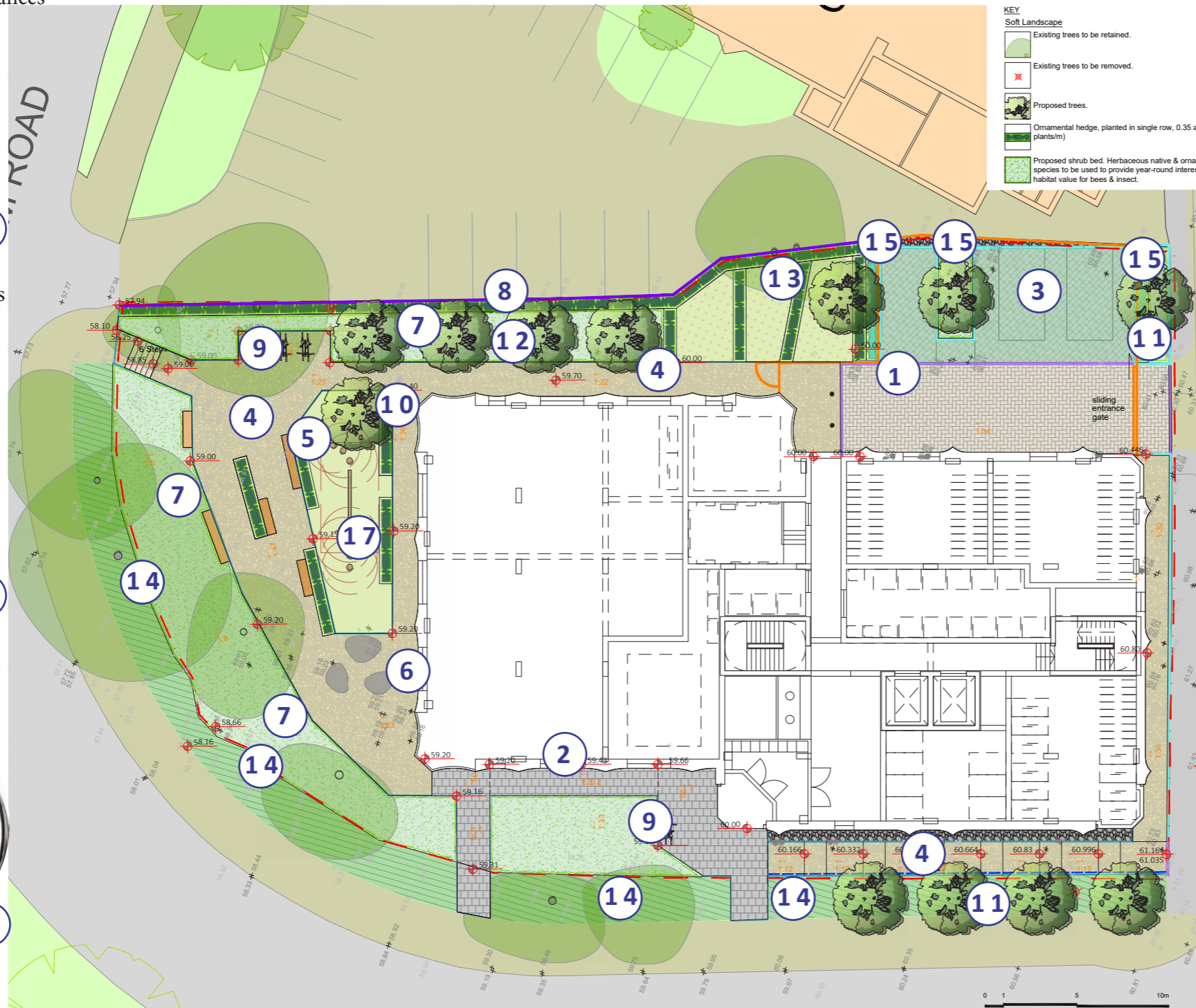
4

Resin bound for pathways



9

Cycle stands



7

Ornamental grasses, herbaceous and evergreen plants



8

Trimmed hedge to boundary



10

Betula utilis var. jacquemontii



11

Pyrus 'Chanticleer'



12

Acer pseudoplatanus 'Erectum'

Ground Floor Landscape GA@NTS

PODIUM ARRANGEMENT PLAN



Landscape GA podium @NTS



1

Resin bound gravel to footpath



2

Safety rubber surface to play area



3

Artificial grass to play area and yoga



4

Ornamental grasses, herbaceous and evergreen plants



13

Stepped timber seating

Stone shaped bench



5

Solid wood seating cubes



6 Timber picnic tables



7

Grass mounds



9

Play equipment for children of 0-4 years old



8

Multi-stem / small trees



10

Planter Integrated timber seating



11

Sun loungers

6-8 The City House- Sutton Urban Greening Factor

The Urban Greening Factor (UGF) has been calculated in accordance with draft London Plan Policy G5. The UGF looks to ensure proposals ‘contribute to the greening of London by including urban greening as a fundamental element of site and building design, and by incorporating measures such as high-quality landscaping ...’

The landscape proposals maximize the use of soft landscaping while addressing the site constraints and access requirements. Hedges have been used to introduce linear interest and trees are proposed where space allows. Permeable paving is used as a surface for pathways, internal road and for parking spaces. All these measures seek to maximize the UGF calculation.

As shown in the table opposite, the UGF for the Submitted Scheme is assessed to be 0.41 against a Target Score of 0.3 for commercial and 0.4 for residential development as outlined in Policy G5 of the draft London Plan. (see table opposite).

GLA Policy G5 Urban Greening

Surface Cover Type	Factor	Area (m ²)	Contribution
Intensive green roof or vegetation over structure. Substrate minimum settled depth of 150mm.	0.8	57	45.6
Standard trees planted in connected tree pits with a minimum soil volume equivalent to at least two thirds of the projected canopy area of the mature tree.	0.8	324	259.2
Flower-rich perennial planting.	0.7	40	28
Hedges (line of mature shrubs one or two shrubs wide).	0.6	57	34.2
Standard trees planted in pits with soil volumes less than two thirds of the projected canopy area of the mature tree.	0.6	188	112.8
Green wall –modular system or climbers rooted in soil.	0.6	27	16.2
Groundcover planting.	0.5	249	124.5
Amenity grassland (species-poor, regularly mown lawn).	0.4	50	20
Permeable paving.	0.1	782	78.2
Total contribution			718.7
Total site area (m²)			1752
Urban Greening Factor			0.410

URBAN GREENING FACTOR $\frac{718.7}{1752} = 0.410$
 Site area (sqm)

TOTAL SCORE 718.7



1. Acer pseudoplatanus 'Erectum'



2. Pyrus calleryana 'Chanticleer'



3. Betula pendula var. jacquemontii (multi-stem)



Ground Floor Landscape GA@NTS

Indicative Tree Palette - Ground Floor



1. *Betula pendula* var. *jacquemontii* (multi-stem)



2. *Photinia* 'Red Robin' (multi-stem)



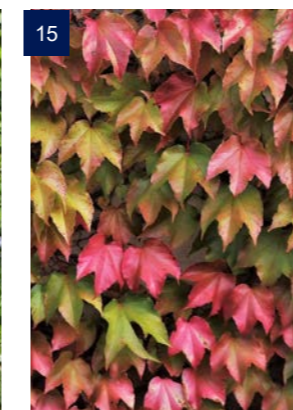
3. *Magnolia grandiflora* (multi-stem)



Podium Level Landscape GA@NTS

Indicative Tree Palette - Podium Level

1. Aucuba japonica 'Variegata'
2. Liriope muscari
3. Hemerocallis 'Pink Damask'
4. Salvia nemorosa 'Caradonna'
5. Hebe 'Emerald Gem'
6. Stipa tenuissima
7. Geranium Sp
8. Euonymus fortunei 'Emerald n Gold'
9. Hebe 'Red Edge'
10. Brachyglottis 'Sunshine'
11. Sarococca hookeriana var humilis
12. Photinia 'Little Red Robin'
13. Wildflowers for shaded areas
14. Evergreen groundcovers e.g. Vinca minor
15. Parthenocissus tricuspidata 'Veitchii'



Indicative Planting Palette

Indicative materials and furniture



Permeable block paving to turning area



Grass cretes to parking spaces



Permeable flag paving to entrances



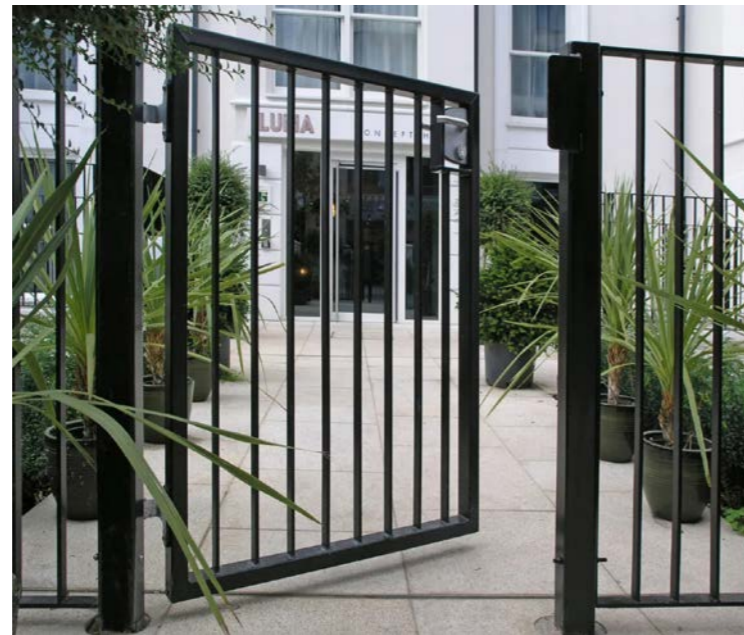
Artificial grass to podium



Metal edging to the resin bound gravel paving



Cycle stands for visitors and residents



Flat top metal railing for boundary demarcation between development and Baptist church



Steel framed picnic tables with timber slats to podium



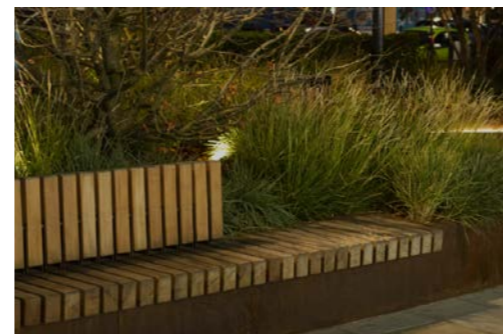
Steel framed coffee table with timber slats to podium



Solid wood seating cubes to podium



Solid timber benches to GF



Planter integrated seating to podium

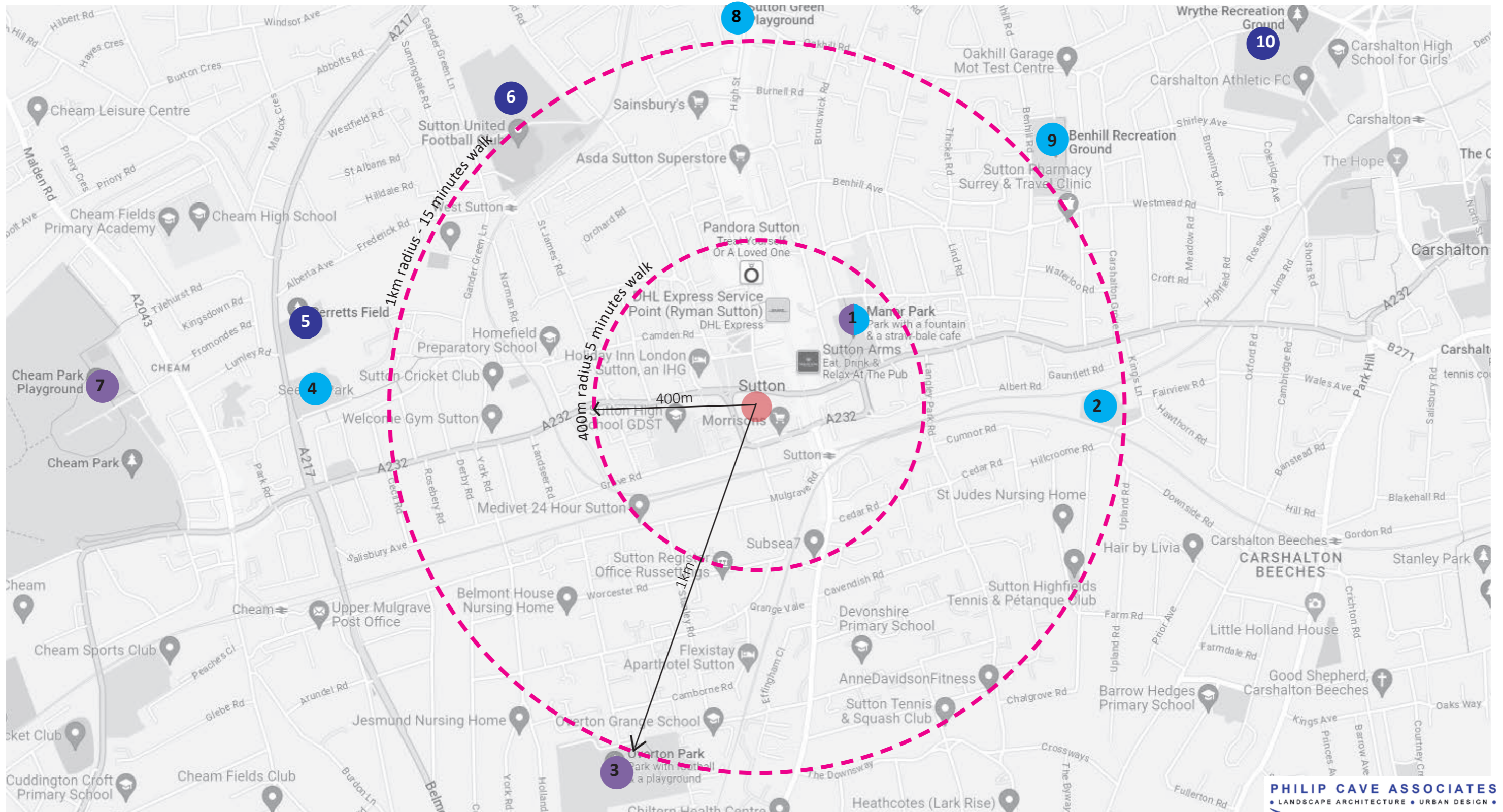


Sun loungers to podium

- Proposed Development
- 1 Existing Play area for 4-8 years old children- Walking distance for accompanied children is 400m (5minutes)
- 7 Existing Play area for 8-14 years old children - Walking distance 1km (15 minutes) for accompanied children or not
- 6 Existing outdoor gym / sport pitches for all ages

Existing Play areas

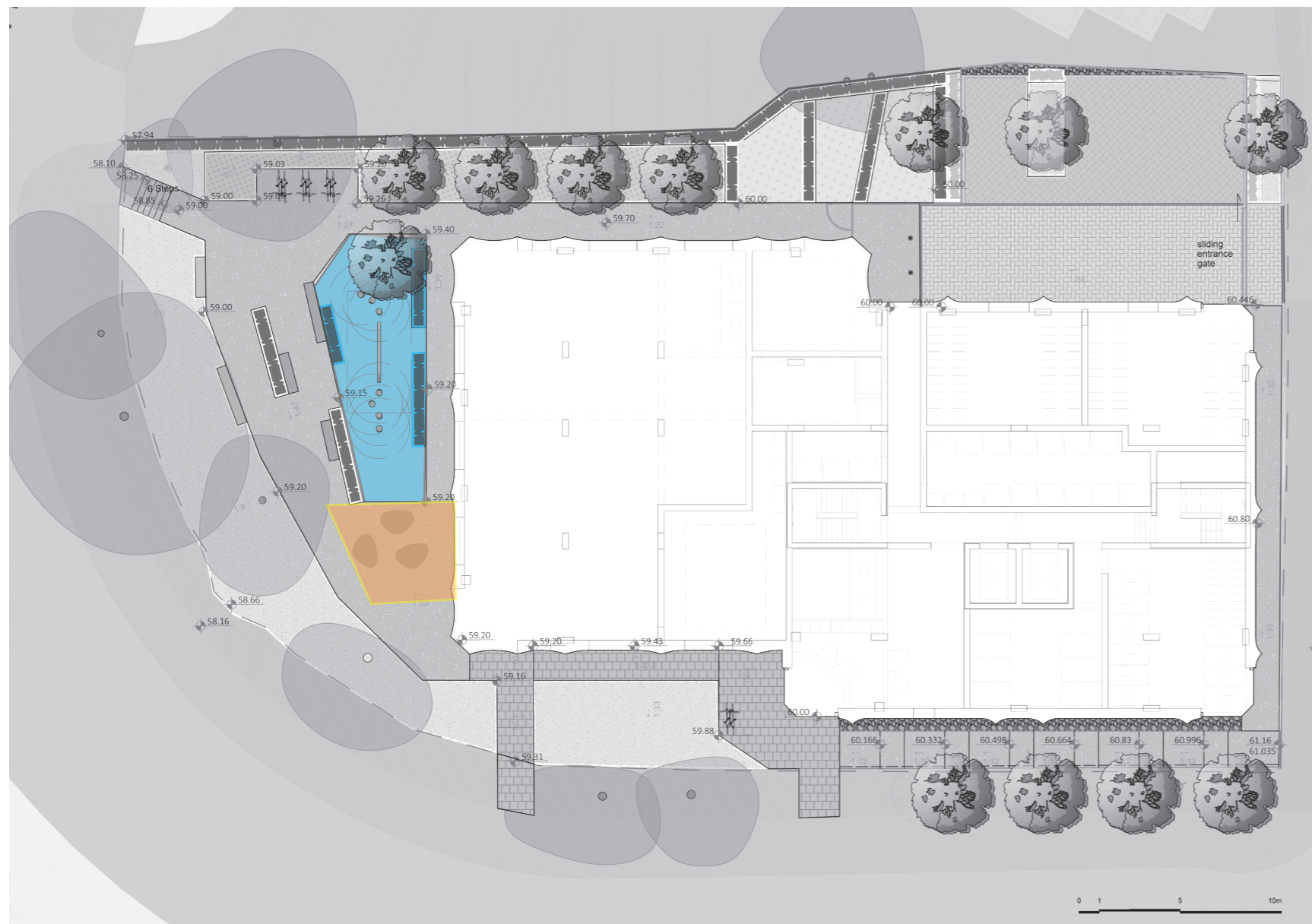
- 1. Manor Park
- 2. The Warren Recreation Ground
- 3. Overton Park
- 4. Sears Park
- 5. Berretts Field
- 6. Collingwood Road Recreation Ground
- 7. Cheam Park Playground
- 8. Sutton Green Playground
- 9. Benhill Recreation Ground
- 10. Wrythe Recreation Ground



Ground Floor

Key

- Playable space for all ages - 58m²
- Informal Play area for children over 12 years old - 20m²

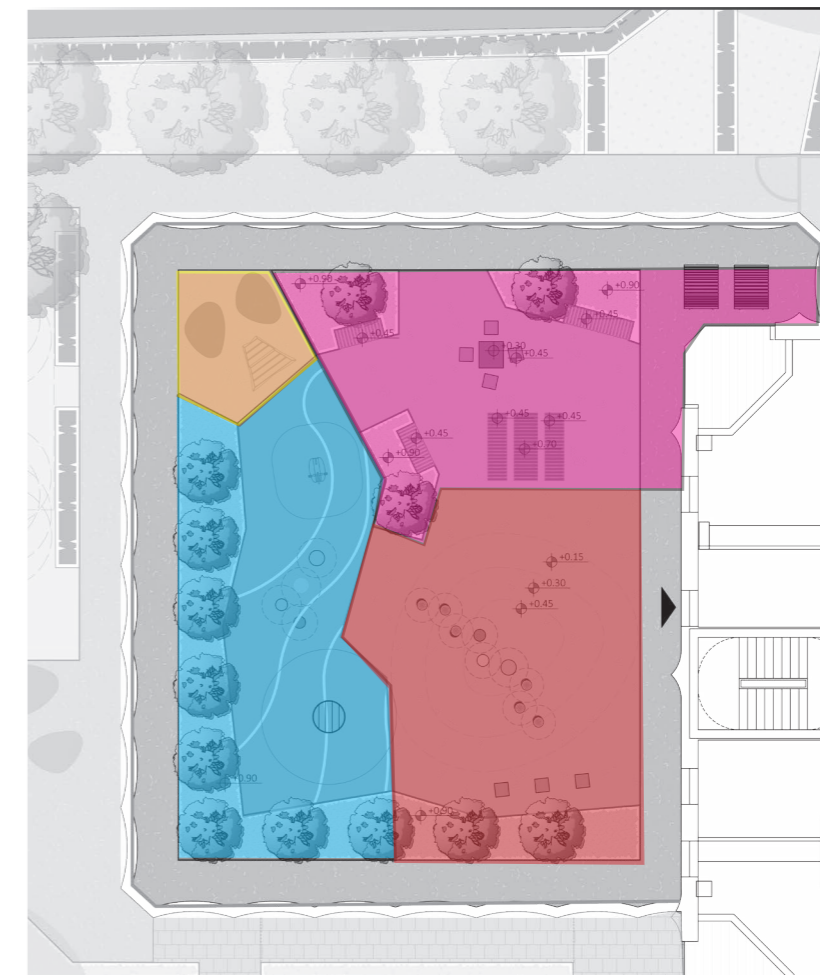


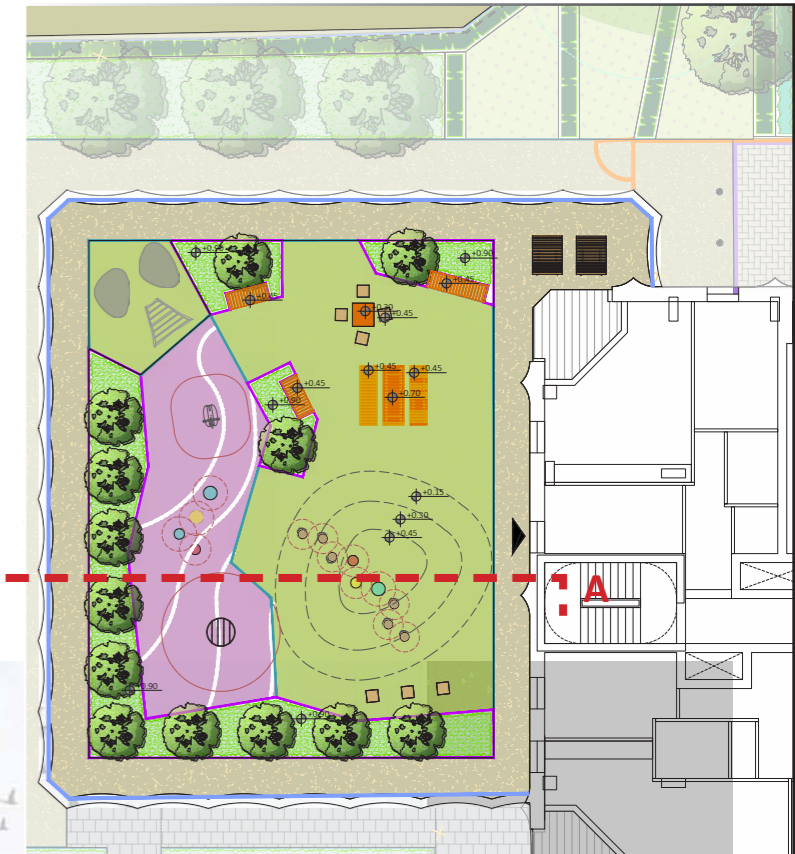
- Play requirements:**
- Under 5 years - 79 sqm
 - 5-11 years - 51 sqm
 - 12+ years - 15 sqm

Podium level

Key

- Proposed Play area for children under 5 years old - 77m²
- Proposed Play area for children ages 5-11 years old - 80m²
- Proposed Informal Play area for children over 12 years old - 13m²
- Amenity space for adults - 74m²





Section A-A



Building

Section @ NTS