

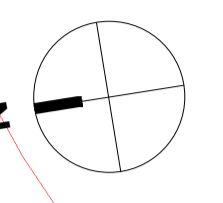
The use of this data by the recipient acts as an agreement of the following statements:
Do not use this data if you do not agree with any of the following statements:

Ryder Architecture has co-ordinated relevant information received from third parties, but are not responsible for the content of the information received from others.

The controlled version of this drawing should be viewed in DWG or PDF format not DWG or other formats. All prints of this drawing must be made in full colour.

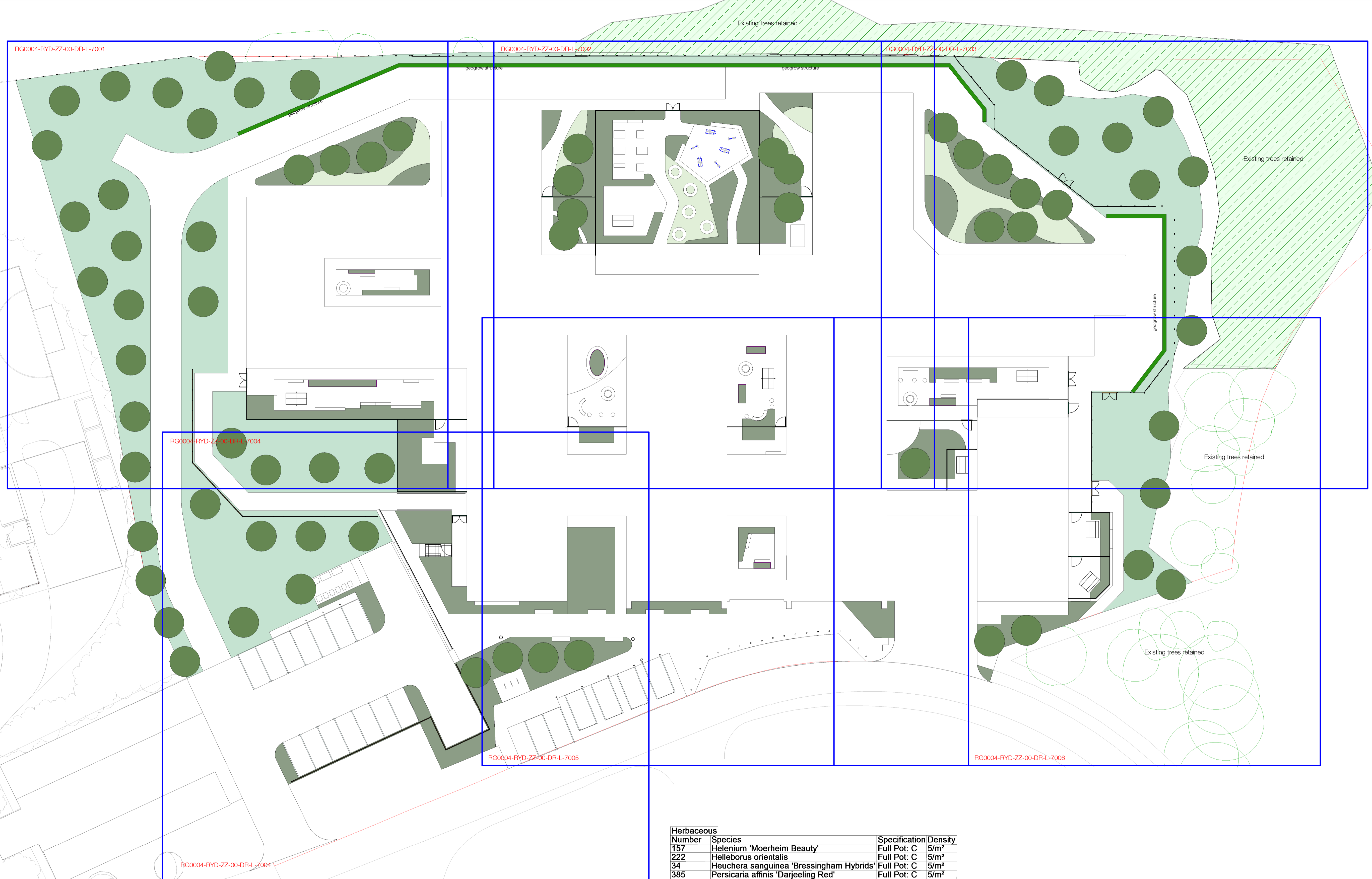
Where this drawing has been based upon Ordnance Survey data, it has been reproduced under the terms of Ryder Licence No. 100000144. Reproduction of this drawing in whole or in part is prohibited without the prior permission of Ordnance Survey.

Do not scale the drawing. Use figured dimensions in all cases. Check all dimensions on site. Report any discrepancies in writing to Ryder before proceeding.



LEGEND

- PROPOSED Site Boundary
- Q30 310 Proposed Grass Seed to Visual Amenity Gardens
Mixture: Germinall Amenity A24 Wear and Tear
- Q30 312 Wildflower Seed Mixture
Supplier: Emorsgate Seeds
Mixture: EMSP
- Ornamental planting
REFER TO PLANTING PLANS
- Proposed trees
- Geogrow retaining structures.
Details by Geogrow specialist



Herbaceous		
Number	Species	Specification Density
157	Helenium 'Moerheim Beauty'	Full Pot: C 5/m ²
222	Helleborus orientalis	Full Pot: C 5/m ²
34	Heuchera sanguinea 'Bressingham Hybrids'	Full Pot: C 5/m ²
385	Persicaria affinis 'Darjeeling Red'	Full Pot: C 5/m ²
100	Rudbeckia fulgida sullivantii 'Goldsturm'	Full Pot: C 5/m ²
77	Sedum 'Herbstfreude'	Full Pot: C 5/m ²
Total :975		

Ferns		
Number	Species	Specification Density
271	Asplenium scolopendrium	Full Pot: C 5/m ²
260	Blechnum spicant	Full Pot: C 5/m ²
124	Polystichum setiferum	Full Pot: C 5/m ²
Total :655		

Grasses				
Number	Species	Specification Density	Area	Notes
244	Carex oshimensis 'Evergold'	Full Pot: C 5/m ²	48m ²	To be underplanted with Allium 'Purple Sensation' Grade 12/+ @ 7per m ² - Total 469no. Bulbs
221	Carex oshimensis 'Evergold'	Full Pot: C 5/m ²	42m ²	
144	Choiysia ternata 'Sundance'	Full Pot: C 3/m ²	47m ²	
246	Festuca glauca	Full Pot: C 5/m ²	46m ²	
515	Panicum virgatum 'Northwind'	Full Pot: C 5/m ²	101m ²	
565	Pennisetum alopecuroides 'Hamel'	Full Pot: C 5/m ²	110m ²	
Total :1935				

Chesterfield - Overall Proposed Planting Schedule

Trees					
Number	Species	Height	Girth	Specification	Density
14	Acer campestre	450-500cm	18-20cm	Extra Heavy Standard: 3x: RB: Clear Stem min. 200cm	Counted
6	Amelanchier lamarckii	350-425cm	16-18cm	Extra Heavy Standard: 5 brks: 3x: RB: Clear Stem 175-200cm	Counted
21	Betula pendula	450-500cm	18-20cm	Extra Heavy Standard: 3x: RB: Clear Stem min. 200cm	Counted
2	Betula utilis jacquemontii	300-350cm		Multi-Stemmed: Bushy: 3 Stems min.: C	Counted
6	Prunus 'Accolade'	450-500cm	18-20cm	Extra Heavy Standard: 3x: RB: Clear Stem min. 200cm	Counted
13	Prunus padus	450-500cm	18-20cm	Extra Heavy Standard: 3x: RB: Clear Stem min. 200cm	Counted
8	Quercus robur	450-500cm	18-20cm	Extra Heavy Standard: 3x: RB: Clear Stem min. 200cm	Counted
Total :70					

Shrubs				
Number	Species	Height	Specification	Density
263	Buxus sempervirens	20-30cm	Bushy: 6 brks: C	5/m ²
502	Hebe 'Red Edge'		Bushy: 5 brks: C	5/m ²
387	Lavandula stoechas pedunculata	20-30cm	Bushy: 5 brks: C	3/m ²
359	Pachysandra terminalis		Several Shoots: 9 brks: C	5/m ²
280	Rosmarinus officinalis	30-40cm	Bushy: 4 brks: C	3/m ²
Total :1791				

C2	Updates in line with comments received	ADL	ADL	07/02/24
C1	Issued for planning	ADL	ADL	14/12/23
Rev	Description	Drawn	Checked	Date

Subsidiary
Construction Approval
Project
Derbyshire Healthcare NHS Foundation Trust
New Mental Health Accommodation - Chesterfield (Landscape)
Chesterfield Hospital, Derbyshire North
Drawing
Planting Plan Overview

Drawing Number						
Project ID	Originator	Zone	Level	Type	Role	Number
RG0004	- RYD	- ZZ	- XX	- DR	- L	- 7000
Project Number						
10443-00	Scale at A1	1 : 250	Status	S4	Revision	C2