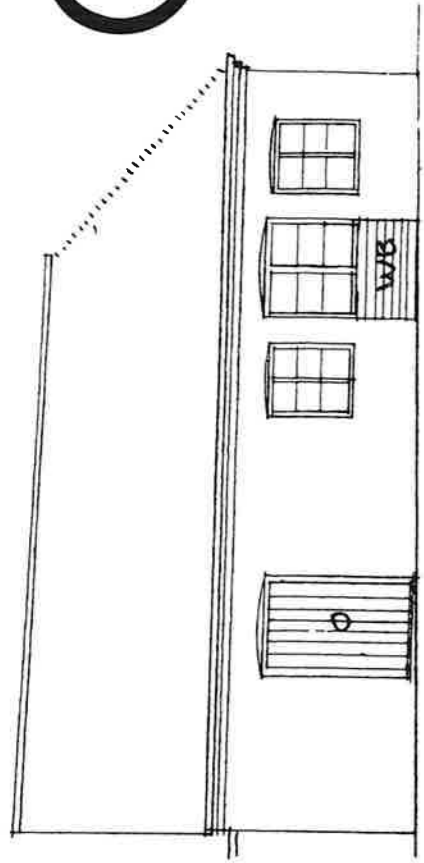
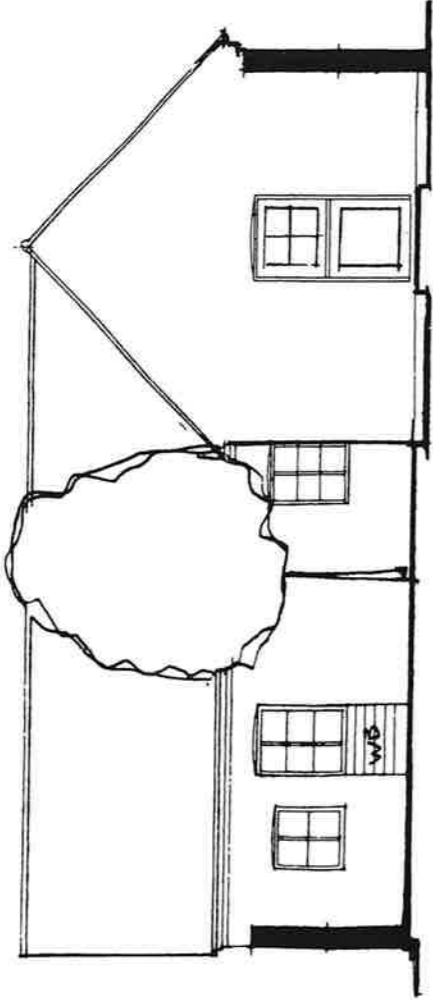


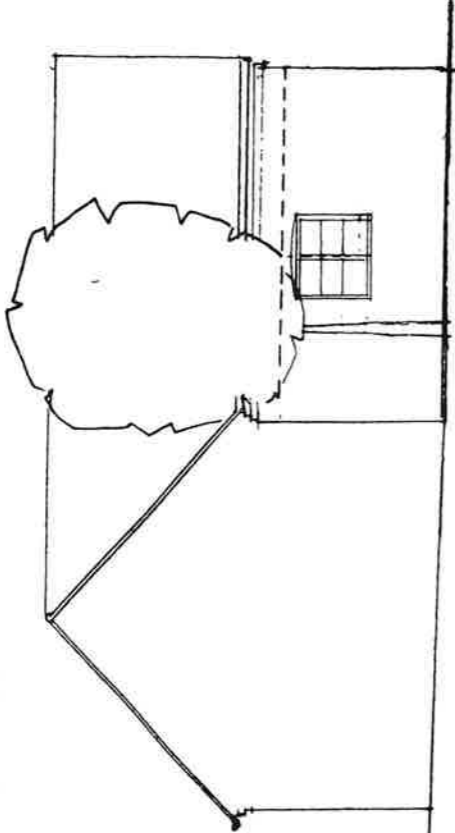
WEST



NORTH



EAST

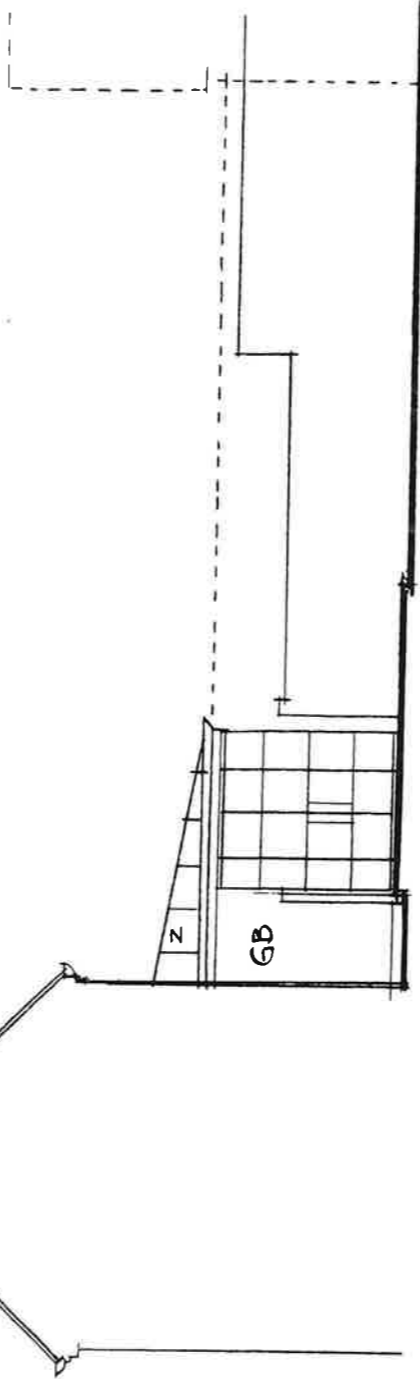


SOUTH

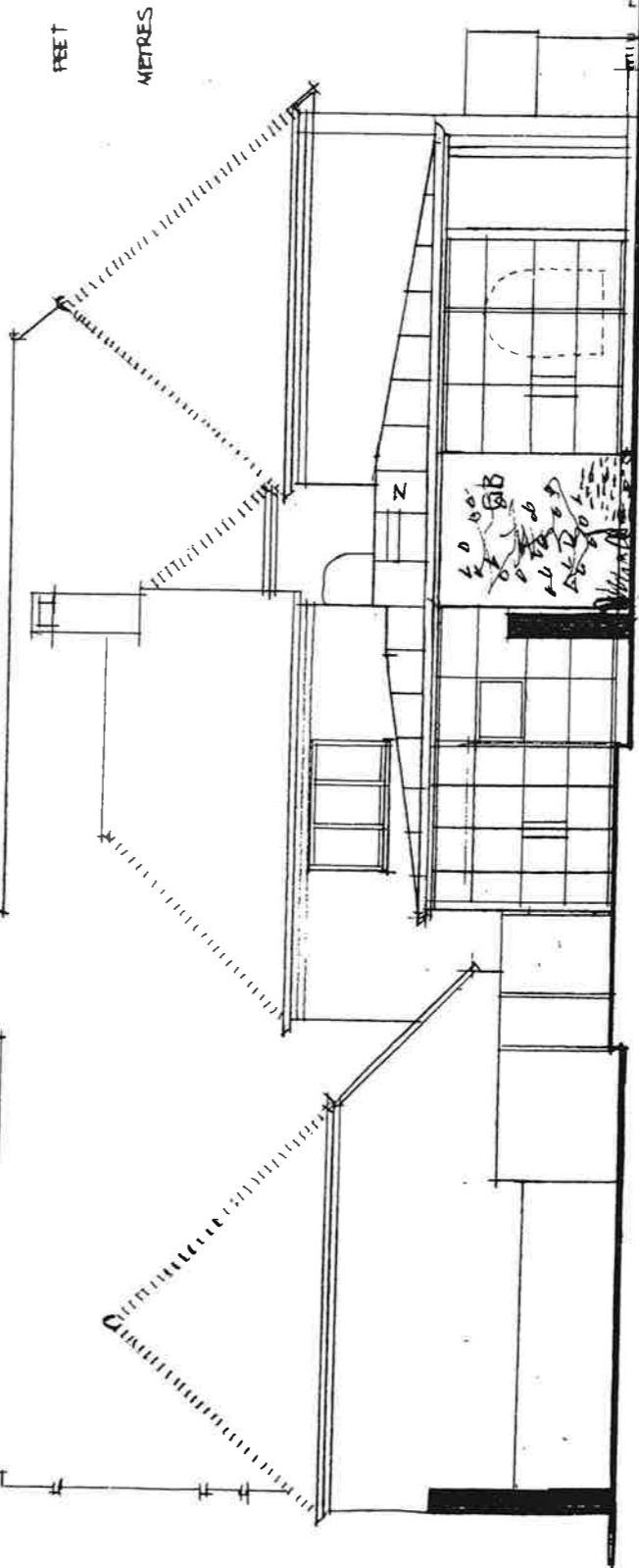
**MATERIALS**

- Z GREY ZINC, ROOF & GUTTERS
- GB GREY BOARDING
- WB GREY WEATHERBOARDING
- O OAK

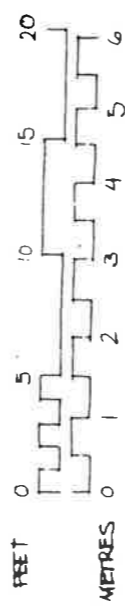
CONSERVATION STYLE ROOF WINDOWS



NORTH



WEST



**IMPORTANT**  
Do not lift from the sheets, except for planning purposes, use agreed dimensions only. If you wish to download the drawings (01243 57661) or subscribe (01243 57662) the drawings and dimensions must be checked on site prior to commencement of works and the drawing/document is to be read in conjunction with other consultation/specification information and the architect's contract drawings and specifications etc.  
If you are using the drawings for any other purpose than those stated here, approval must be sought in writing from the architect.  
Any alterations to the drawings must be agreed in writing with the architect. The drawings are the property of Douglas Knigg Partnership (IP) unless expressly stated in writing by Douglas Knigg Partnership (IP).

originator  
checked

WEST

A3 SHEET SIZE

ALTERATIONS & EXTENSIONS

# SOUTH MUNDHAM HOUSE

AT SOUTH MUNDHAM, WEST SUSSEX

PROPOSED

ELEVATIONS  
1:100

0318-27 C

EAST