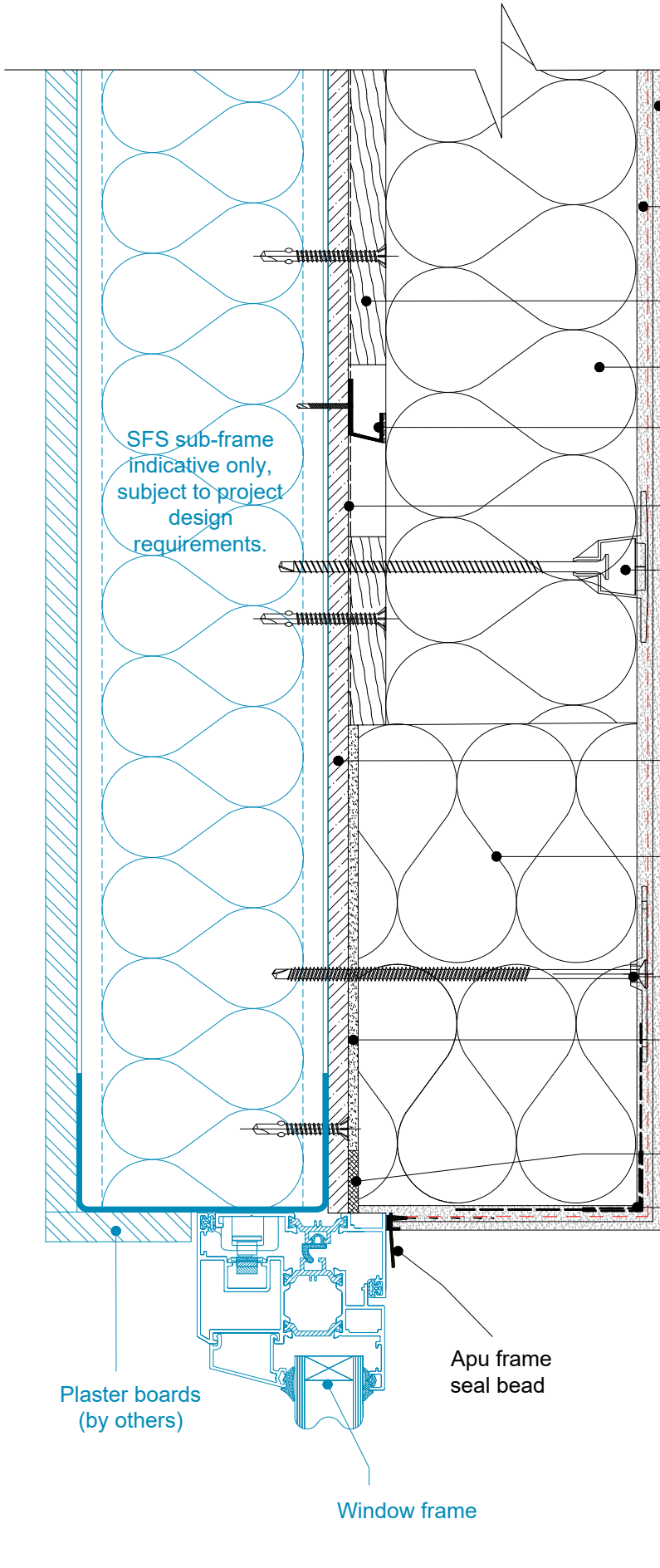


Note:

1. The EWI system illustrated are based on a typical system - All insulation thickness, mechanical fixing, beads trims, sealants to be in line with and refer to project M21 specification.
2. All main sheathing board joints to be sealed with RCM tape + Dafa tape.
3. Fixing patterns to be confirmed, subject to project wind loading, refer to project M21 specification.
4. Movement joint within the system and structure please refer to guidance note within M21 specification.
5. Air tightness and sealant detail between window / door to sheathing board / structure by others.



- Topcoat Envirosil silicone/
Enviromin mineral finish
over primer.
- SPS Envirowall Enviroend
Basecoat 3-5mm with
glass-fibre mesh into top third
- CS1 Fillet - A1 Fire Rated Packing Strip -
15x125mm @600mm max centres
subject to wind load calc's
- Insulation slab HD mineral wool
- Deflector Channel with 1° Fall
SPSE Adhesive Tape and silicone
Seal Along Top.
- Breather Membrane
- Insulation Mechanical fixing
- Sheathing board - Y-wall equal or approved.
- A1 mineral wool Cavity barrier to suit
cavity depth plus main insulation layer
minus adhesive thickness
- Stainless steel fixing and Stainless steel washer
- SPS Envirowall Envirobed Adhesive
- Sealing Tape compressed by 2/3rds
- PVC mesh-winged angle bead