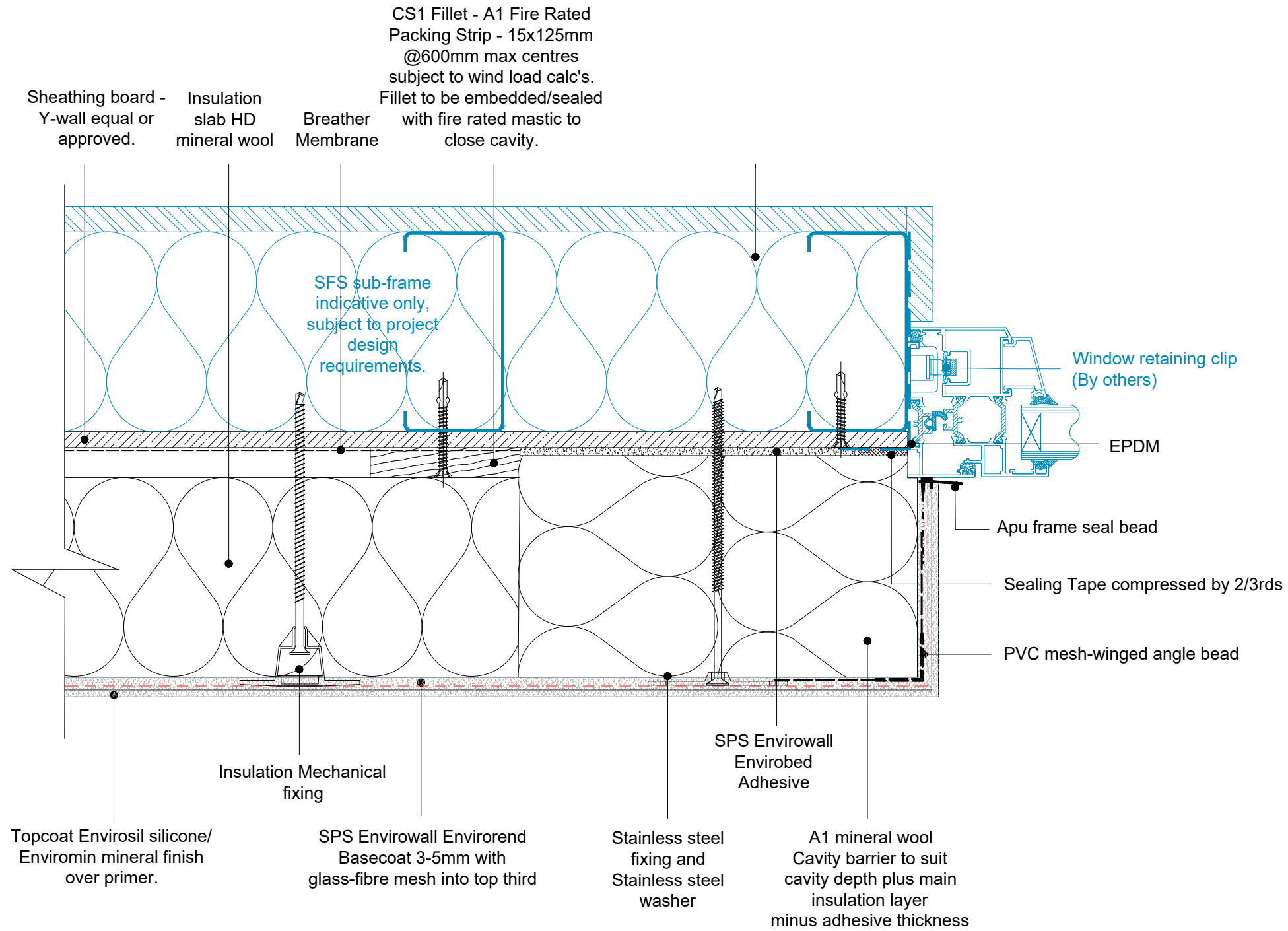


Note:

1. The EWI system illustrated are based on a typical system - All insulation thickness, mechanical fixing, beads trims, sealants to be in line with and refer to project M21 specification.
2. All main sheathing board joints to be sealed with RCM tape + Dafa tape.
3. Fixing patterns to be confirmed, subject to project wind loading, refer to project M21 specification.
4. Movement joint within the system and structure please refer to guidance note within M21 specification.
5. Air tightness and sealant detail between window / door to sheathing board / structure by others.



Benx Ltd, Lonsdale Chambers,
Lonsdale Street,
Stoke-on-Trent
Staffordshire
ST4 4BT
Telephone: 0845 130 0983
Email:
technicalservices@benx.co.uk

All performance data & systems specifications are for systems constructed with materials & components as shown. The inclusion or substitution of any other manufactures materials or components invalidates both test data, system performance and compliance with CDM 2015. The information is provided and based upon details received, which are assumed to include all the relevant facts and data. While it is believed to be correct, we accept no liability for its accuracy, adequacy or completeness. Recipients must satisfy themselves as to its suitability as we do not accept responsibility for any claims or consequential loss. Acceptance of the content and subsequent design responsibility rests entirely with the recipients. Any subsequent design changes that affect the detail which we are not informed of in a written format will void this detail. None of the content may be copied without the prior approval from the Benx Group Technical Services Department. This statement should be read in conjunction with the standard terms and conditions of Benx Group.

REV	DATE	NOTE	BY	STATUS:	INFORMATION	DRAWN:
A	06/12/22	First Issue	AG	PROJECT:	ISO No: 5212	AG
				TYPICAL DETAILS CS1		CHECK:
				DRAWING No: TD-CS1-SFS-MW-R-21		DS
				DESCRIPTION:		NTS@A3
				Window Reveal with Cavity barrier closure		DATE:
						Nov 22
						REV:
						A

