

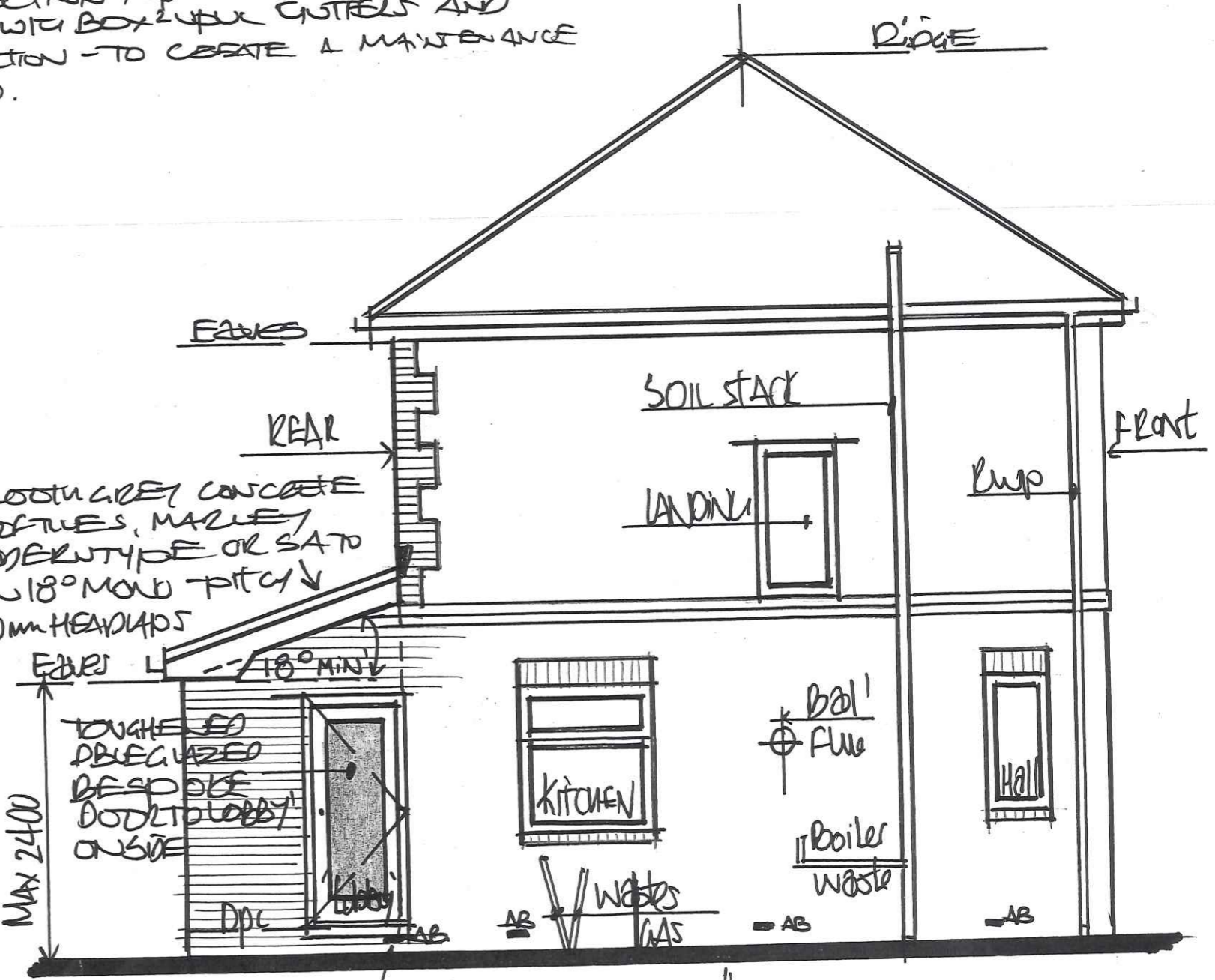
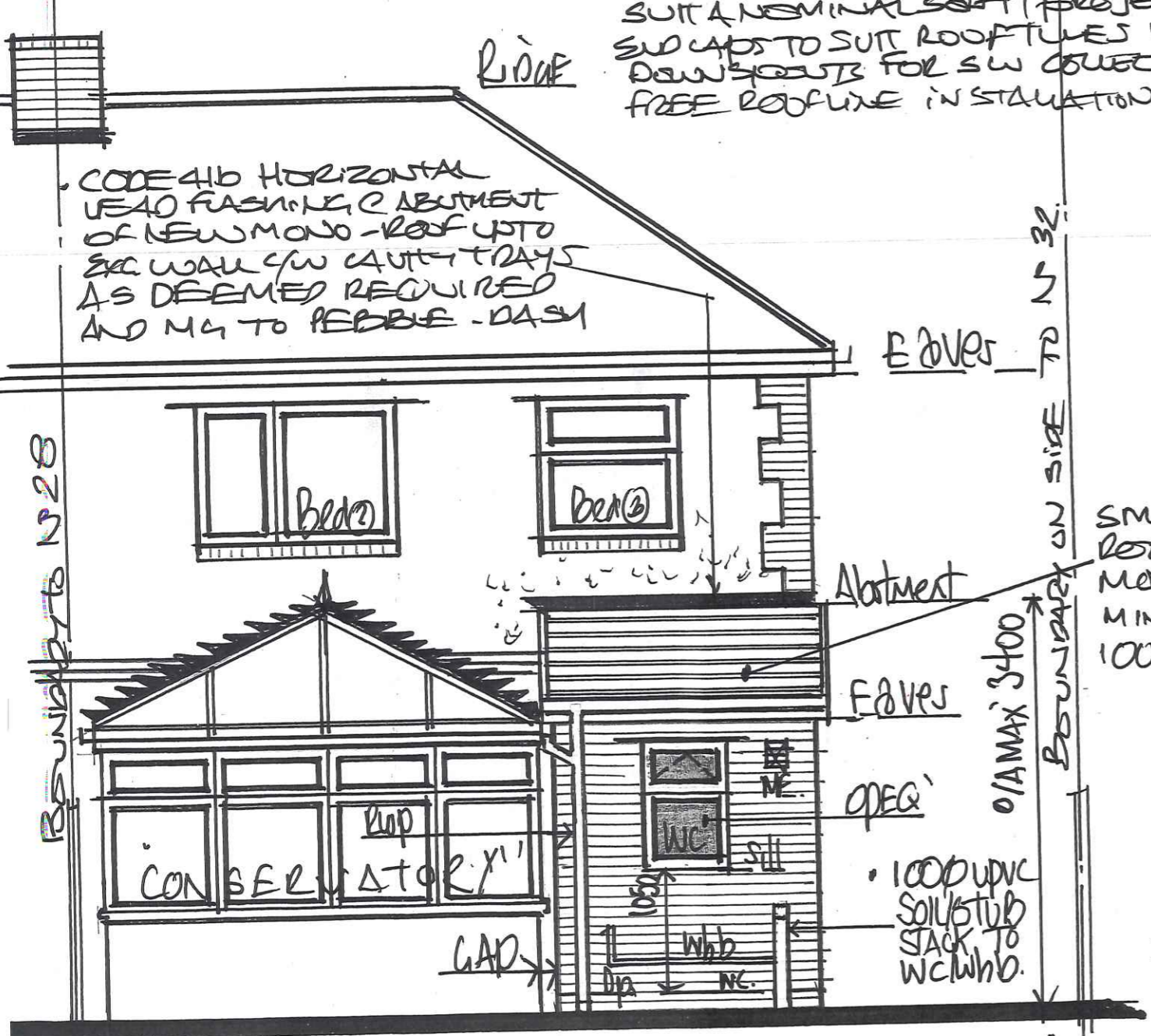
NEW WINDOW CASSEMENT

70mm UPVC - VEKA OR REHAU PROFILED WINDOW CASSEMENT IN REAL-LIGHT-OAKS MATCH EXISTING FITTED IN DOUBLE GLAZED SEALED UNITS 9A 28mm IN 20+4mm PANELED TO ACHIEVE A MAX 'U' VALUE OF 1.4 AS DOC L JUNE 22 WITH A TOP OPERABLE FOR RADIO - NATURAL - PURGE VENTILATION & FRESH AIR AND A TRICKLE VENT FOR ADDITIONAL SECURE BACKGROUND VENTILATION EQUAL TO MIN 8000mm² AS DOC F. TABLE 1.7. GLAZING TO BE OPERABLE/SECURE & PROTECTED FOR PRIVACY AND A FLOOR TO SILL HEIGHT OF 1050mm AFFL FOR A 150mm x COURSE TILED SPUR BACK etc

• EXTRACTION FAN \square / \square ME: - AS DOC F PROVIDE A MECHANICAL EXTRACTION FAN TO GW C AREA TO RUN - NO LESS THAN 6L/SEC - USING A TOPPS S12 OR A NU AIR TYPE LOW VOLTAGE EXTRACTION FAN WITH ADJUSTABLE RUN - ON - TIME TO DUCT OUT THRO' EXTERNAL WALL GW C/W CAUTY WALL DUCT - SUSSE, MAGNETIC GRILLE AND LOUVER etc

• DOOR INSIDE: - SPECIALIST/BESPOKE MAKE DOOR CASEMENT TO OPEN INWARDS 2100 HIGH x WIDTH TO SUIT W/TOUGHENED, DOUBLE GLAZED SEALED UNITS TO BS 6206 AS DOC K. 2013 P. DESIGN ASSUMED TO BE IN CRITICAL LOCATION - IRON MENCEZ, FURNITURE TO DOOR TO SUIT etc

• ROOFWORKS. UPVC PROFILED CASINGS/SWIFTS & EAVES TO SUIT A NOMINAL SOFT PROJECTION, UPVC VERGE BOARDS AND END CAPS TO SUIT ROOFTILES WITH BOX UPVC GUTTERS AND DOWNSPOUTS FOR SW COLLECTION - TO CREATE A MAINTENANCE FREE ROOFLINE IN SITUATION.



1:50 PROPOSED - "REAR" - ELEVATION.

PROPOSED "SIDE VIEW" - FROM N 32

06 FEB 2024 - 12620124

• 225x75 AIR BRICK TO MAINTAIN A CROSS FLOW VENTILATION TO EXISTING AIR BRICKS TO ORIGINAL SUB-FLOOR VOID etc

DRG N°: 5