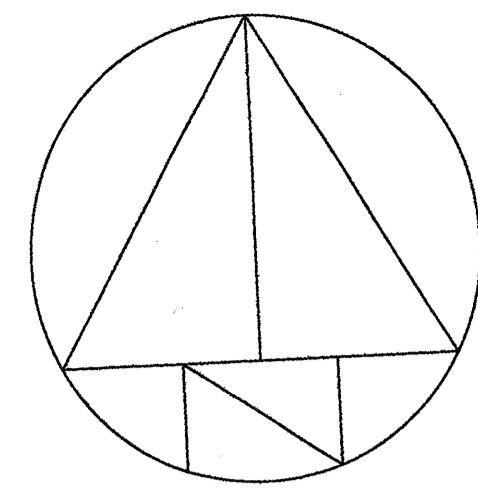
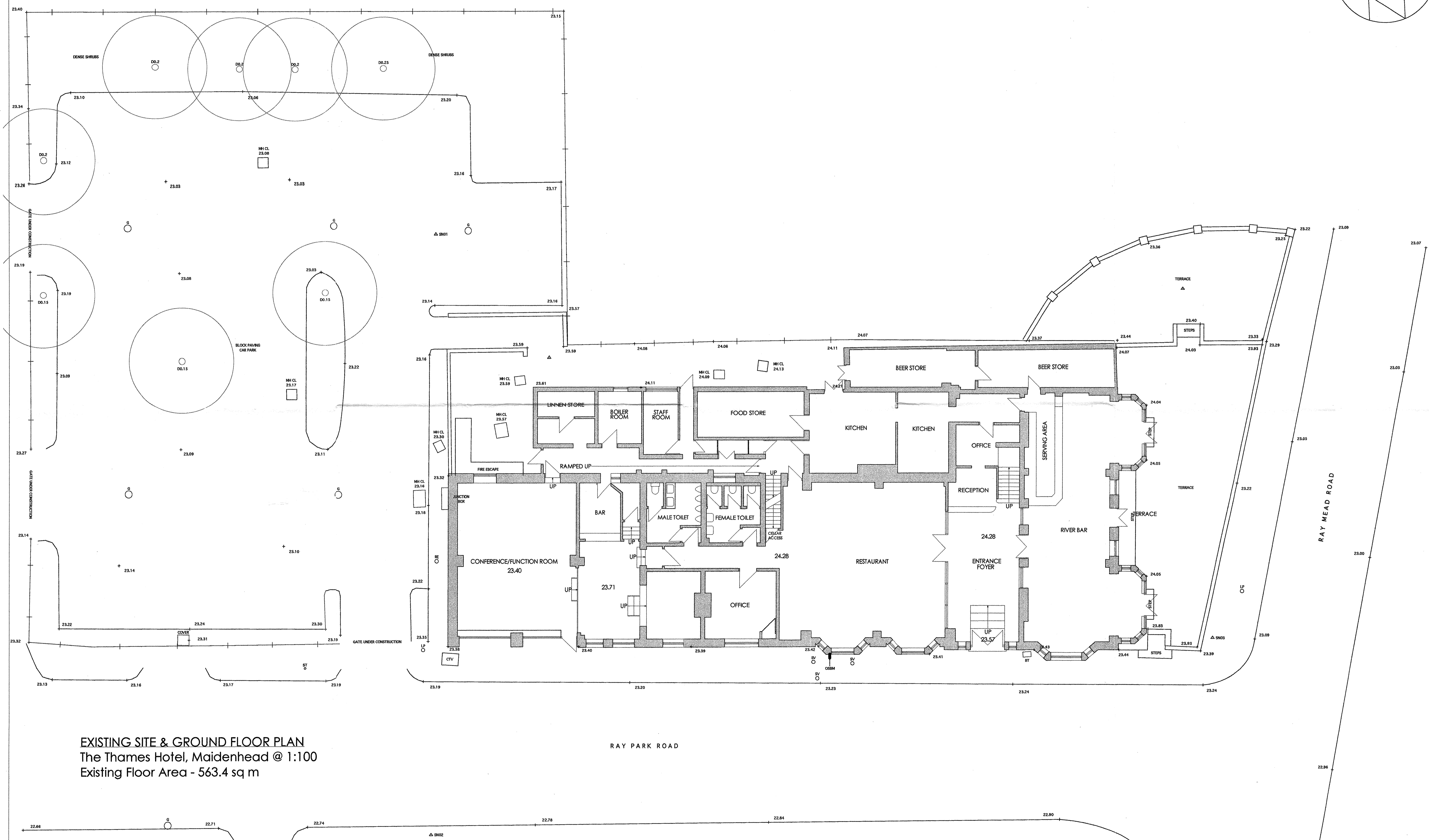


NOTE
Do not scale from these drawings. Measure all critical dimensions on site.



LEVELS RELATE TO O.S.B.M LOCATED ON THE THAMES
HOTEL WITH A VALUE OF 23.67m



EXISTING SITE & GROUND FLOOR PLAN
The Thames Hotel, Maidenhead @ 1:100
Existing Floor Area - 563.4 sq m