

Application Number: 24/00019/FUL

Neighbours Notified at:

42 George Street, New Stevenston, Motherwell, North Lanarkshire, ML1 4NQ

4 Hamilton Place, New Stevenston, Motherwell, North Lanarkshire, ML1 4NJ

44 George Street, New Stevenston, Motherwell, North Lanarkshire, ML1 4NQ

32 George Street, New Stevenston, Motherwell, North Lanarkshire, ML1 4NQ

40 George Street, New Stevenston, Motherwell, North Lanarkshire, ML1 4NQ

38 George Street, New Stevenston, Motherwell, North Lanarkshire, ML1 4NQ

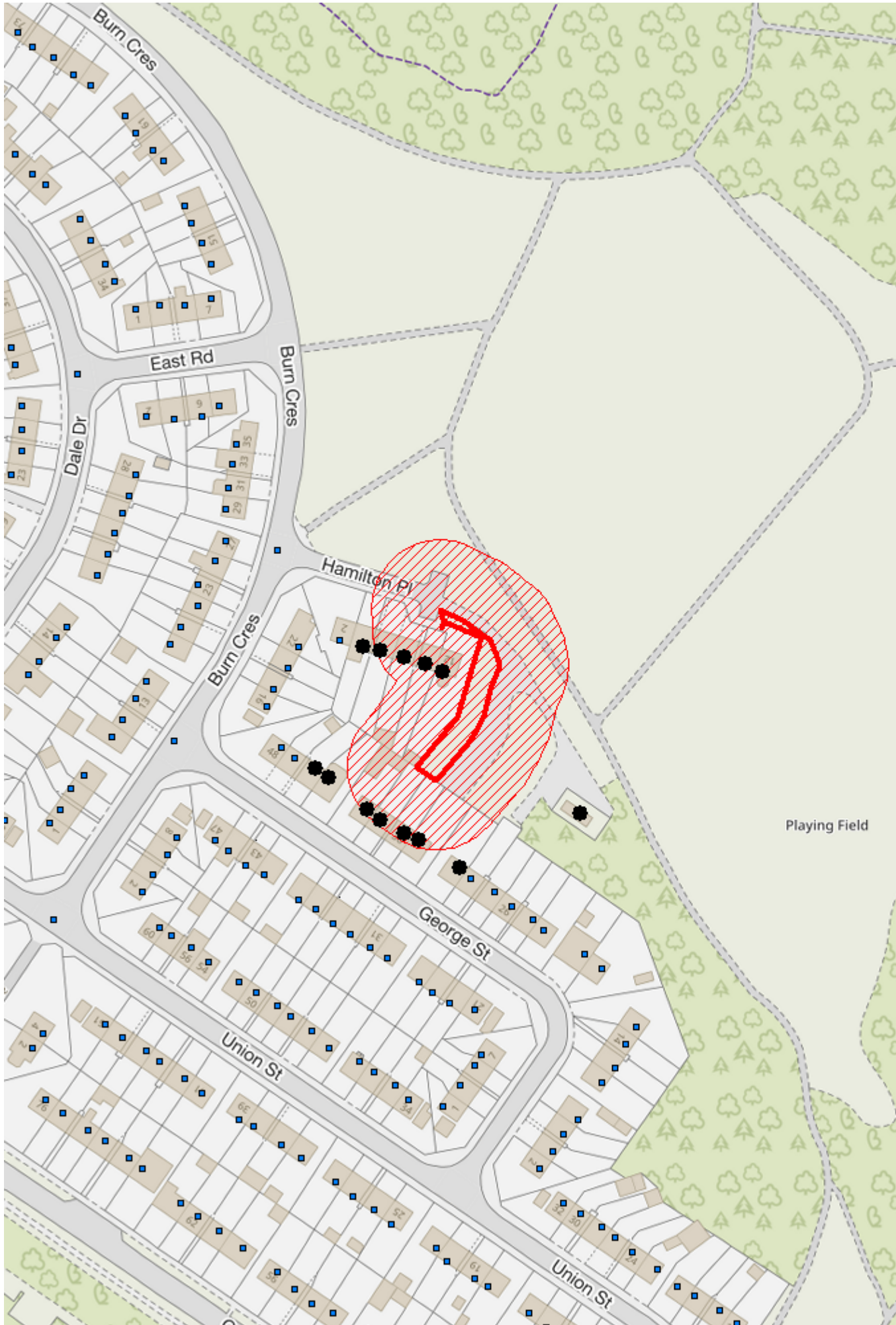
36 George Street, New Stevenston, Motherwell, North Lanarkshire, ML1 4NQ

6 Hamilton Place, New Stevenston, Motherwell, North Lanarkshire, ML1 4NJ

34 George Street, New Stevenston, Motherwell, North Lanarkshire, ML1 4NQ

8 Hamilton Place, New Stevenston, Motherwell, North Lanarkshire, ML1 4NJ

10 Hamilton Place, New Stevenston, Motherwell, North Lanarkshire, ML1 4NJ



Playing Field