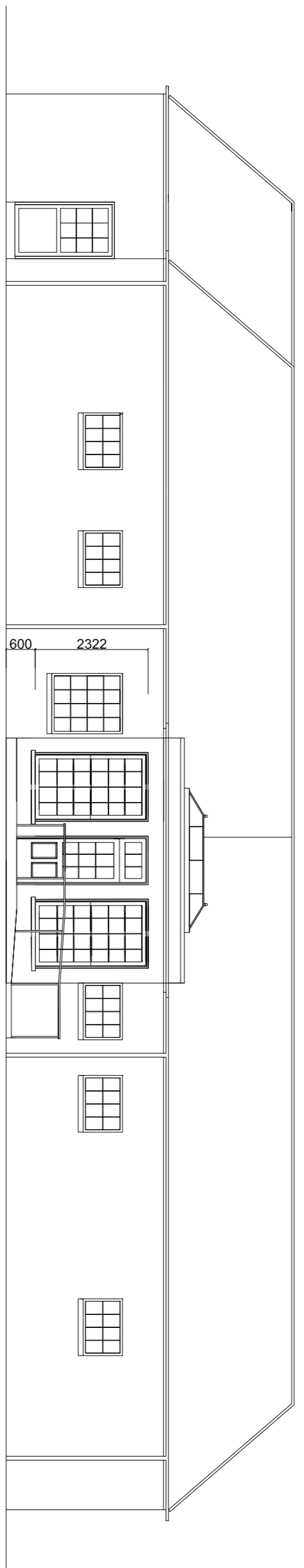


ELEVATION B B without rails



BLUEBELLS ORANGERIE IMAGES



ELEVATION B B with rails

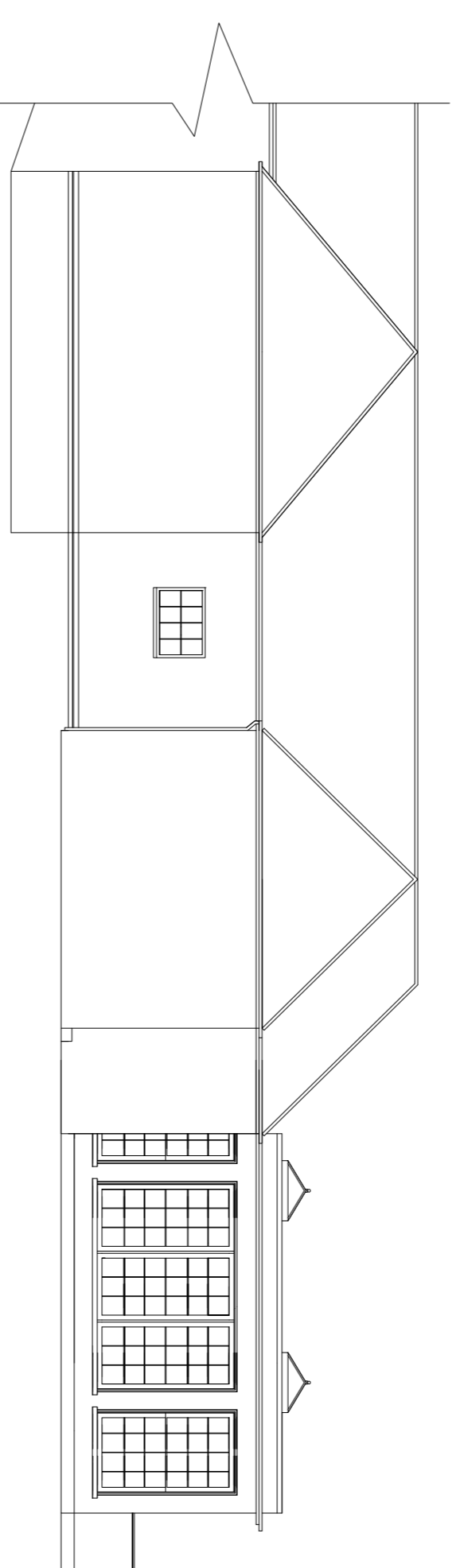


BLUEBELLS ORANGERIE IMAGES

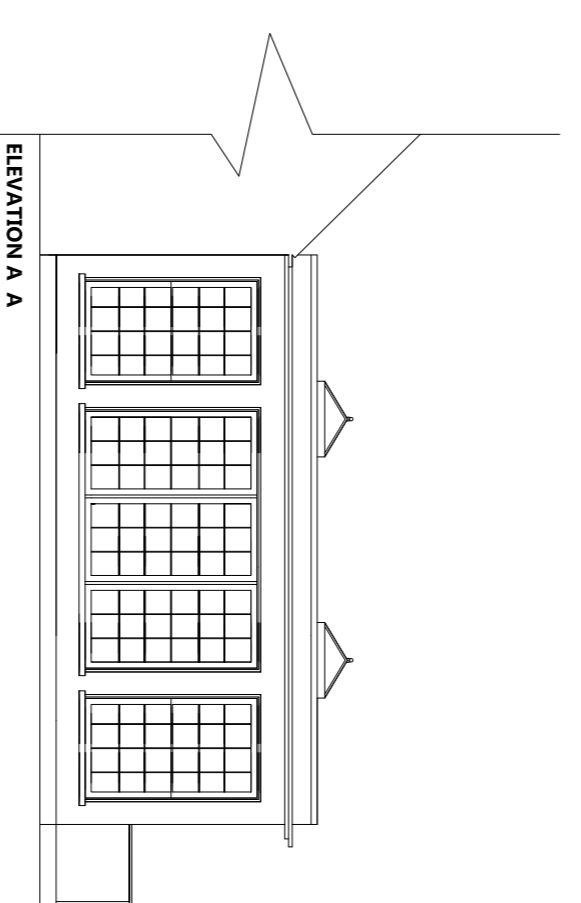


BLUEBELLS ORANGERIE IMAGES

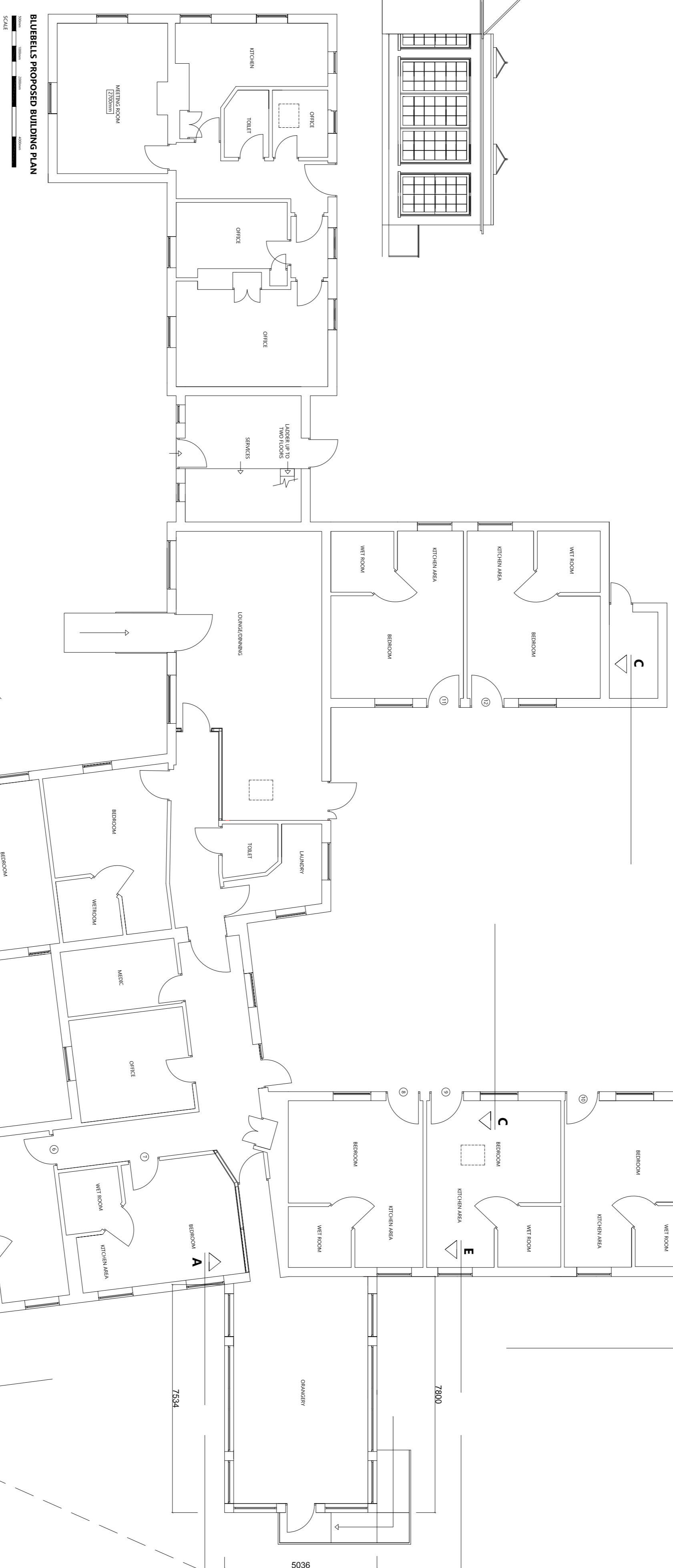
DASHED LINE INDICATES WALL



ELEVATION D D

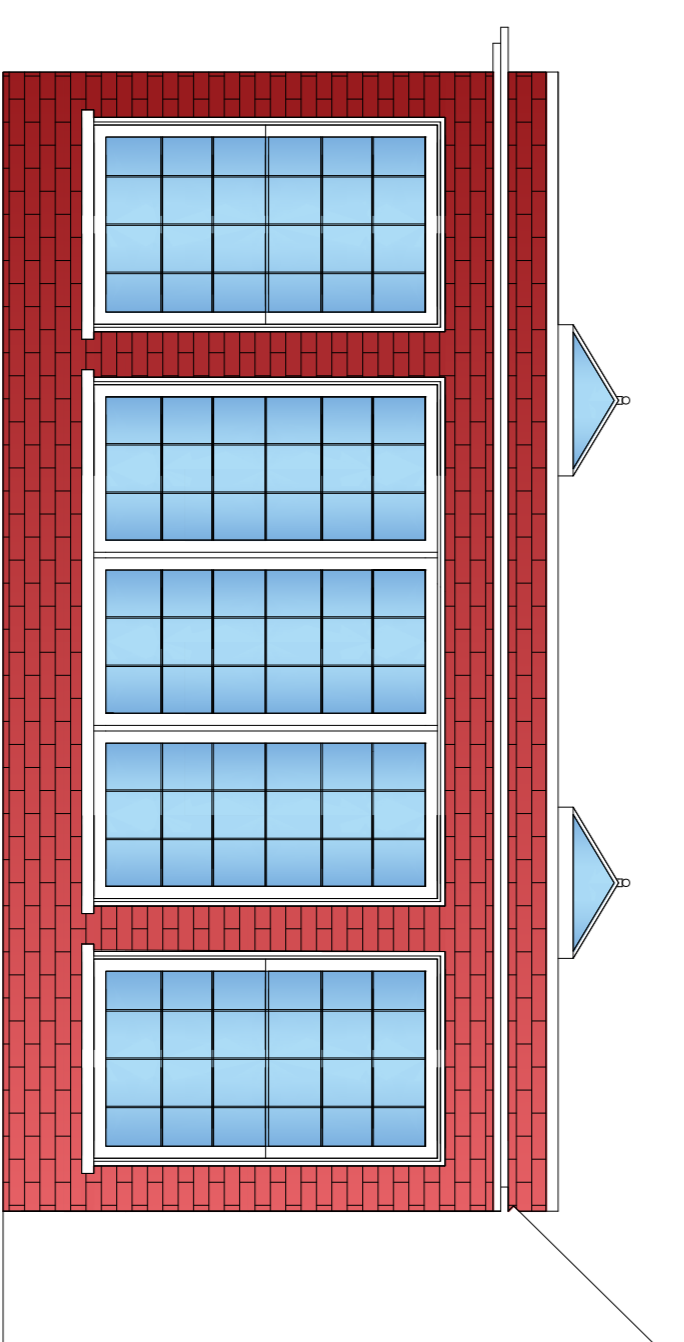


ELEVATION A A



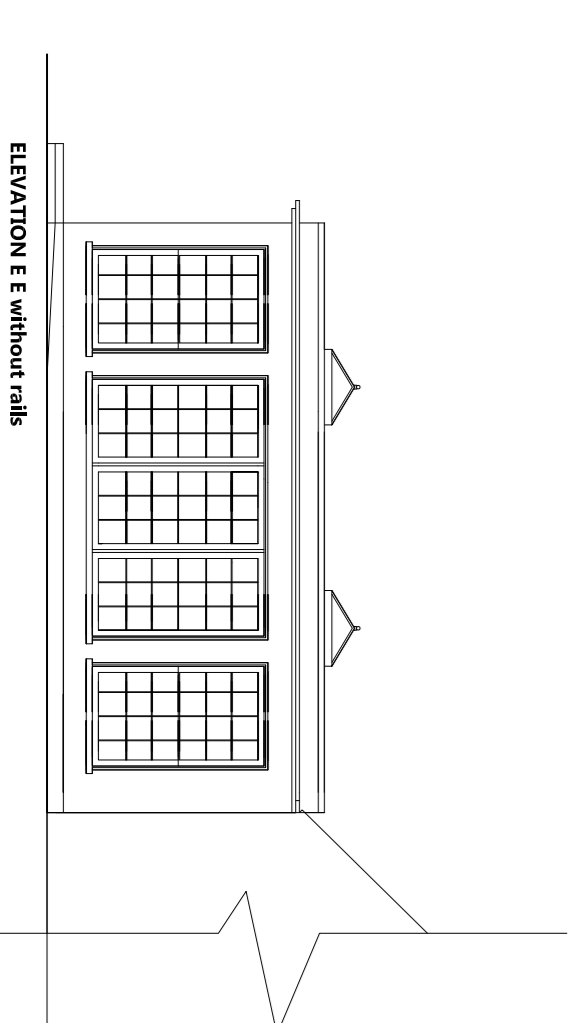
BLUEBELLS PROPOSED BUILDING PLAN

SCALE

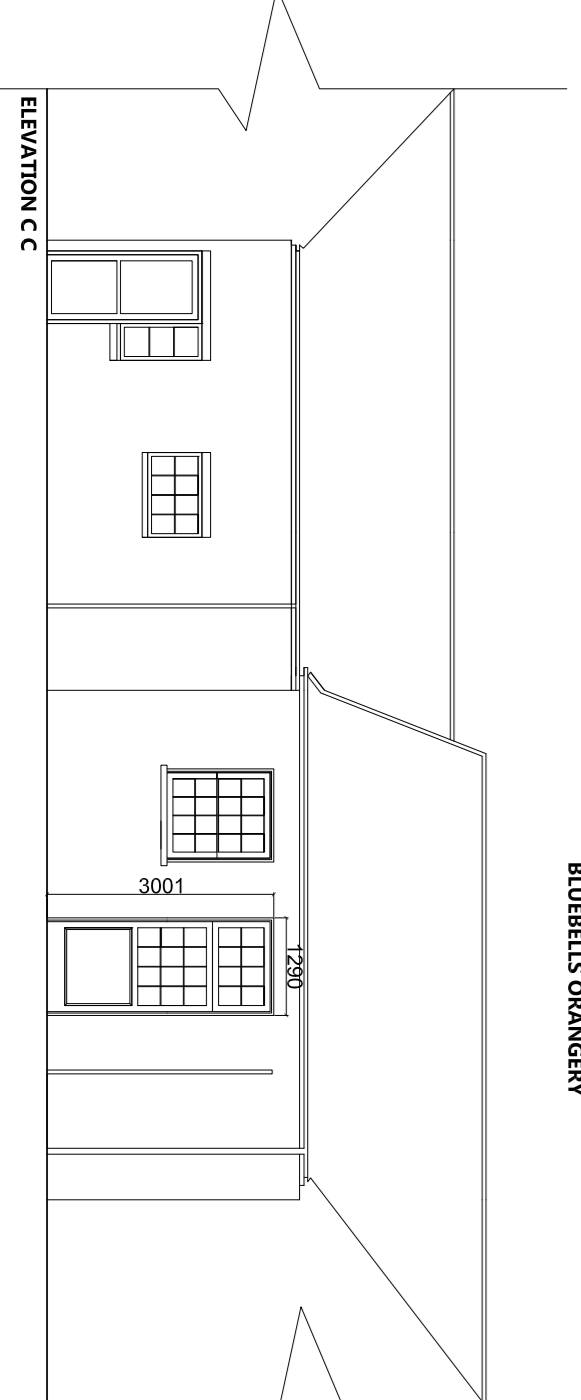


BLUEBELLS ORANGERIE

Orangerie formed in block work with brick corner skin to match existing bricks in shape and colour
 Windows, double glazed where opening to be sash type to match existing windows and stone painted white to match existing
 Facade and guttering in white to match existing
 Flat roof formed in bitumen with two white painted wood skylights with decorative finials



ELEVATION E E without rails



ELEVATION C C

D

D

Do not scale off this drawing, all dimensions to be checked on site
 This drawing shows 'Design Intent' only. It is the responsibility of the client to ensure that all dimensions on site, to determine the location of all underground services etc.
 All working drawings to be approved by Local Authority and Building Control where appropriate prior to works commencing. Engineers drawings must be read in conjunction with any Structural Engineers drawings and with any specialist contractor drawings/schedules where relevant.
 All materials to be approved by Statutory Authorities.
Statutory Regulations
 The concessionaire fit-out works must fully comply with all British Standards of Codes of Practice, i.e. Health and Safety codes of practice, Regulatory Reform (Fire Safety) Order, IEE Regulations, CDM Regulations and with the appropriate insurance and paperwork in place.

Site: Swanton Care Ltd, Swanton House, Bluebells Orangerie

Title: Proposed plans/elevations
 Scale: 1:100@A1 Date: 28.08.23

Drawn by: JAS (0788 763 0004)
 Drawing no. Blue 002 Rev. C