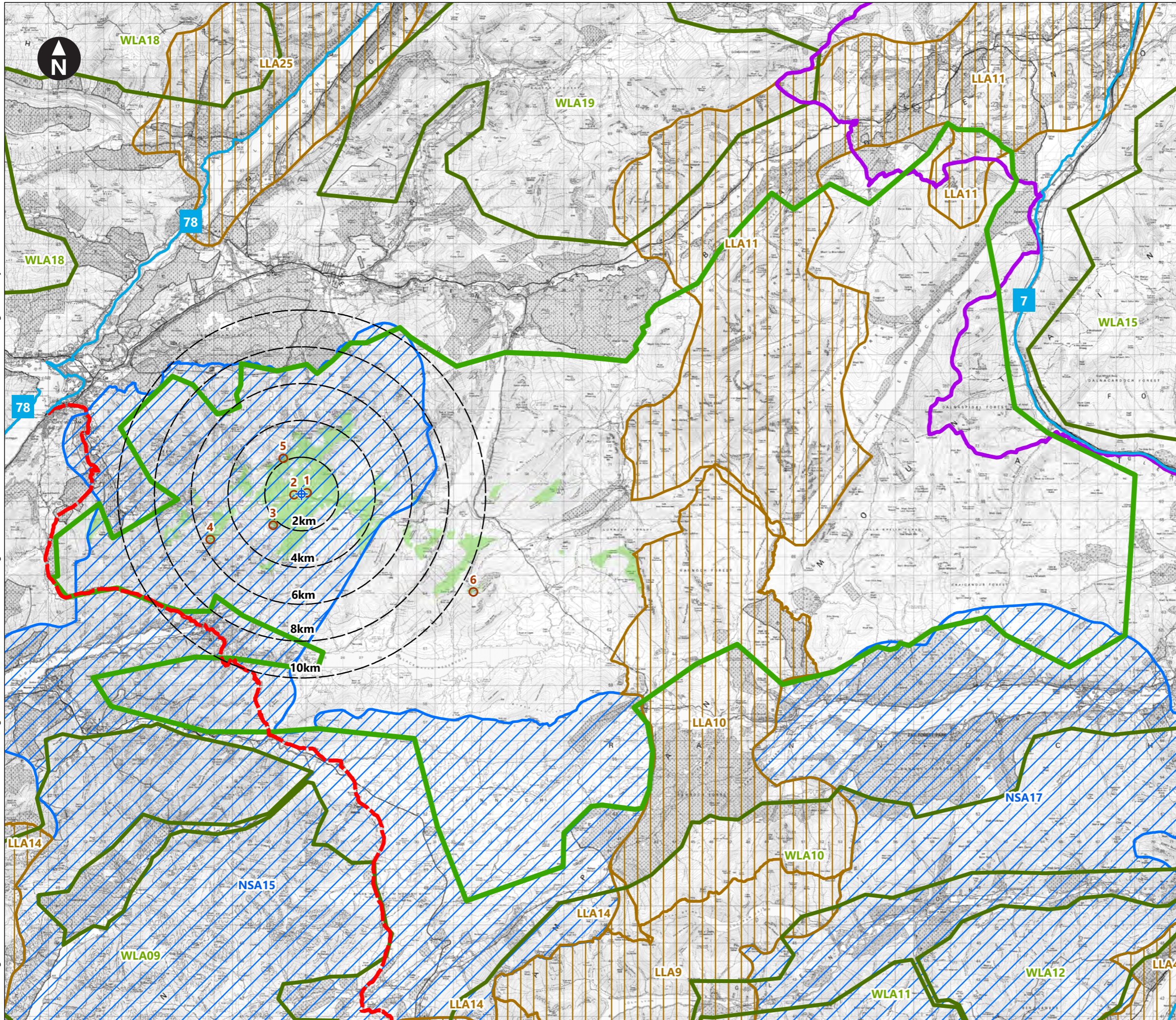


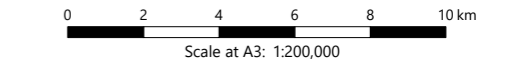
C:\Users\craig.wilson\OneDrive - WSP\0365\ArcGIS\2023\Masts\5 Bogaire - Mamore Estate\ArcGIS\MXD\Figure 2 ZTV 70113884_WSPE-FG-SA-00041_R4.mxd Originator: brycc



- Key
- Proposed mast location
 - Lines indicating the distance from the proposed mast
 - Mast may be theoretically visible
 - Wild Land Area 14: Rannoch - Nevis - Mamores - Alder
 - Cairngorms National Park
 - National Scenic Areas
NSA15) Ben Nevis and Glen Coe
NSA17) Loch Rannoch and Glen Lyon
 - Wild Land Areas
WLA09) Loch Etive Mountains
WLA10) Breadalbane - Schiehallion
WLA11) Lyon - Lochay
WLA12) Ben Lawers
WLA15) Cairngorms
WLA18) Kinlochhour - Knoydart - Morar
WLA19) Braeroy - Glenshirra - Creag Meagaidh
 - Local Landscape Areas
LLA4) Loch Tay
LLA9) Loch Lyon and Loch an Daimh
LLA10) Rannoch Forest
LLA11) Ben Alder, Laggan and Glen Banchor
LLA14) North Argyll
LLA25) Loch Lochy and Loch Oich
 - Sustrans National Cycle Route
 - West Highland Way
 - LVA Viewpoint Locations
1) Track, east of Site, Glen Nevis 4) An Gearanach
2) Track, west of Site, Glen Nevis 5) Sgùrr Chòinnich Mòr
3) Binnein Beag 6) Leum Uilleim

Notes: This drawing is based on a computer generated Zone of theoretical Visibility (ZTV). The areas shown indicate the maximum theoretical visibility of the proposed mast using OS Terrain 5 data only and do not take account of any screening from vegetation or built-form. The ZTV also includes an adjustment that allows for the Curvature and Light Refraction of the Earth.

This figure has been based on the following parameters:
Mast layout file: LLMAMORE005.WFL
Height: 20.5m



© Crown Copyright. All rights reserved. Licence number AL100001776.

Client

Bogaire – Mamore Estate
Landscape and Visual Appraisal

Figure 2
Zone of Theoretical Visibility within
Wild Land Area 14 Rannoch - Nevis -
Mamores - Alder

August 2023

