

(D)

NEW BRICK WALL IN RED/ORANGE BRICKS TO REPLACE TIMBER FENCE. HOLES WILL BE DRILLED IN THE BRICKS TO REPLICATE THE IDEA OF BEE BRICKS. GIVEN THE BLOSSOMS FROM THE FRUIT TREES (PEARS AND ELDERFLOWERS) AND LAVENDER, WE RECKON THAT BEES WILL USE THE DRILLED HOLES.



(F)

WILD FLOWERS SEED MIX TO ENCOURAGE BIO DIVERSITY AS THE EXISTING TURF IS QUITE PLAIN.

URL: <https://www.wildflower.co.uk/products/wildflower-seed-mixtures/100-wildflower-seed-mixtures/>



About Us

Landlife Wildflowers grow and supply high-quality, native wildflower products, restoring wildflowers right across the UK. Working in conjunction with wildlife charity, Buglife, we're bringing back Britain's treasured wildflowers! Find out more about why we've been trusted by the general public, Natural England and The Wildlife Trusts for over twenty years.

Quality

We're proud to supply only the highest-quality, native wildflower products - tried, tested and refined by us for two decades to ensure each and every customer is delighted with their purchase. Find out more about our commitment to the supply of native, provenance-assured wildflower products to restore Britain's natural wildflower habitats for bees, butterflies, birds and wildlife.

Get in Touch

If you have any questions or would like to get in touch, our team of wildflower experts are on hand to guide you every step of the way. We love talking about wildflowers and the quality of our products, and are pleased to help with any enquiry, including how to establish wildflowers, product recommendations and even creating custom mixtures for specific projects.



Low Growing Wildflower Seeds LW12P 100%

How low can you grow?! Find out with this collection of low-growing wildflowers, well-suited for areas which require greater visibility: roadsides, at the front of a bed, or maybe just anywhere you'd want a blanket of beautiful blooms to attract pollinators and grow year after year.

Contains 20 different native wildflower species.

Sowing Rate: 3 grams per sq/m - 1kg covers 330sq/m

Check out the [specification sheet](#) for more details.

10g	Covers 3m ²	£7.00
50g	Covers 15m ²	£15.00
100g	Covers 30m ²	£25.00
250g	Covers 75m ²	£57.00
1kg	Covers 300m ²	£190.00

1 Buy Now

Pay

Mixture Specification

	Common Name	Latin Name	Quantity	Flowers	Height	Type	
1	Bedstraw, Lady's	Galium verum	7.5%	Jun - Sep	50 - 80cm	Perennial	
2	Black Medick	Medicago lupulina	6%	May - Oct	15 - 80cm	Annual	
3	Burnet, Salad	Sanguisorba minor	10%	Jun - Sep	15 - 50cm	Perennial	
4	Campion, Bladder	Silene vulgaris	4%	May - Sep	25 - 60cm	Perennial	
5	Carrot, Wild	Daucus carota	5%	Jun - Oct	30 - 100cm	Perennial	
6	Cat's-ear, Common	Hypochaeris radicata	4%	Jun - Oct	15 - 50cm	Perennial	
7	Cornflower	Centaurea cyanus	10%	Jun - Oct	20 - 80cm	Annual	
8	Cowslip	Primula veris	2%	Apr - May	15 - 30cm	Perennial	
9	Forget-me-not, Field	Myosotis arvensis	5%	May - Jul	20 - 40cm	Annual	
10	Hawkbit, Autumn	Leontodon autumnalis	6%	Aug - Oct	15 - 20cm	Perennial	
11	Hawkbit, Rough	Leontodon hispidus	6.5%	Jun - Oct	15 - 35cm	Perennial	
12	Plantain, Hoary	Plantago media	4%	May - Sep	15 - 45cm	Perennial	
13	Ragged Robin	Lychnis flos-cuculi	1%	May - Aug	30 - 90cm	Perennial	
14	Self-heal	Prunella vulgaris	5%	Jun - Sep	15 - 30cm	Perennial	
15	Sorrel, Sheep's	Rumex acetosella	2%	May - Jul	20 - 40cm	Perennial	
16	Toadflax, Common	Linaria vulgaris	1%	Jun - Oct	30 - 90cm	Perennial	
17	Trefoil, Bird's-foot	Lotus corniculatus	5%	Jun - Aug	10 - 40cm	Perennial	
18	Vetch, Kidney	Anthyllis vulneraria	5%	May - Oct	15 - 50cm	Perennial	
19	Yarrow	Achillea millefolium	1%	Jun - Oct	20 - 100cm	Perennial	
20	Yellow-rattle	Rhinanthus minor	10%	Jun - Sep	25 - 50cm	Annual	

B1 – SWIFT BOX

**BIODIVERSITY ENHANCEMENT – ATTRACT SWIFTS AS ADVISED BY DEDHAM VALE SOCIETY
POSITION – TO BE INSTALLED ON THE WALL JUST BELOW THE ROOF OVERHANG AWAY FROM DIRECT SUN
LIGHT AND RAIN. MUSIC TO ATTRACT THE SWIFTS TO BE ENABLED BY IPOD FROM A NEARBY WINDOW.
INSTALLATION HEIGHT – APPROXIMATELY 5M-6M FROM THE GROUND**

SUPPLIER: RSPB

ADVISOR: DEDHAM VALE SOCIETY

URL: <https://shopping.rspb.org.uk/bird-feeders-boxes-tables/bird-houses-nest-boxes/garden-bird-nest-boxes/rspb-swift-nest-box.html>



RSPB Swift nest box

★★★★☆ (9 Reviews)

Save £2 when you buy two promotional Nest boxes!

[Details](#)

Swift numbers have declined steadily in recent decades; they are on the UK Red List of birds of highest conservation concern, and they need our help. This nest box has been designed in conjunction with Action for Swifts – a voluntary organisation working solely for the conservation of Swifts.

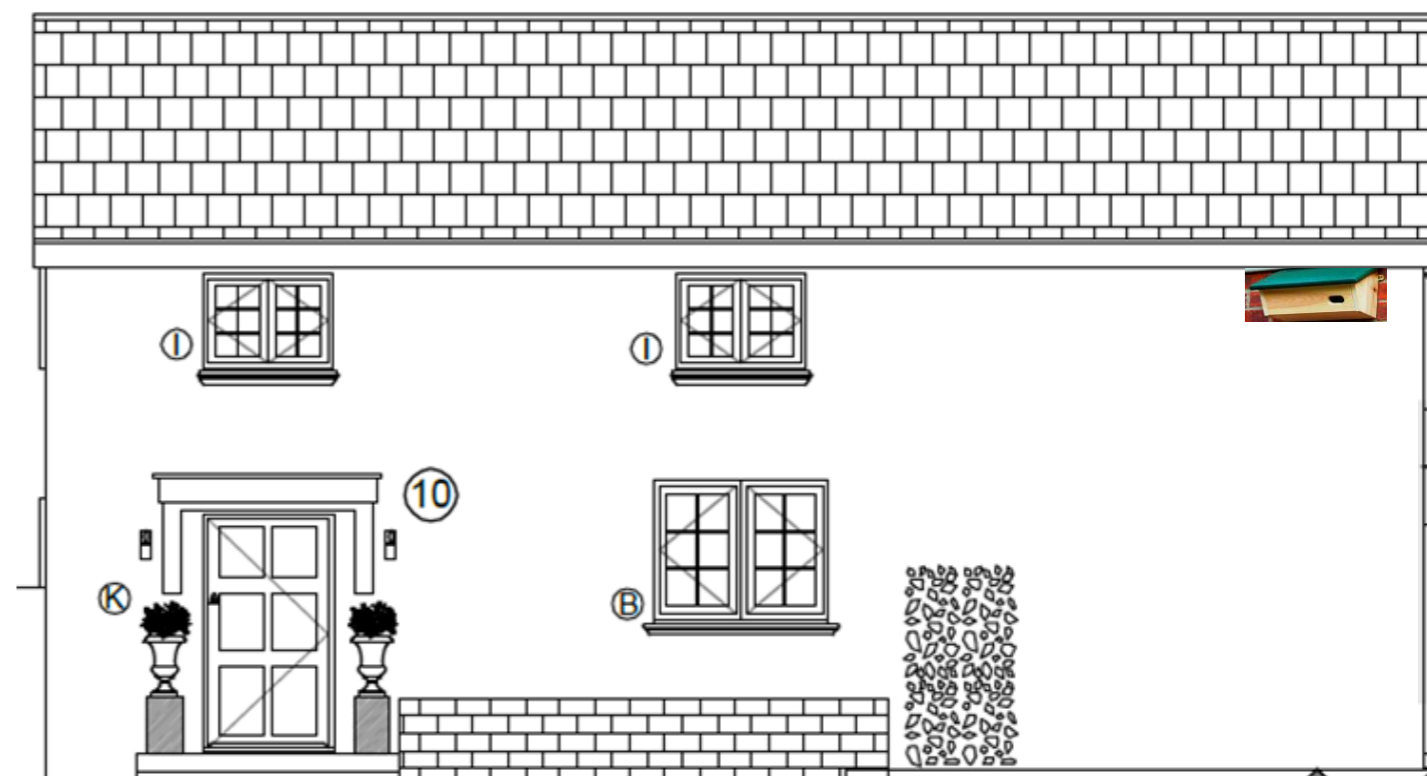
[Read full information](#)

£45.00

Quantity: In stock

[Add to Basket](#)

FREE UK delivery with orders over £50



Product description

The RSPB Swift nest box fits directly beneath even the narrowest of eaves, and its sloping roof improves durability and makes it hard for predators to gain purchase.

Its entry hole measures 28 x 65mm and is designed to keep starlings out, while its internal nest cup will encourage any swift inspecting the box to take up residence. Swifts prefer to occupy nest boxes that contain a nest cup, compared to those without.

Handcrafted in the UK, this swift nest box is made from FSC® certified timber.

Overall measurements are 44cm wide, 21.7cm tall (at the back), 12cm tall (at the front) and 20.2cm deep at the deepest point.

Weight is approximately 3.5kg.

B2 – BIRD BOXES

BIODIVERSITY ENHANCEMENT – PROVIDE A HABITAT FOR SMALL BIRDS SUCH AS ROBINS, HOUSE/TREE SPARROWS AND BLUE TITS WHICH ARE SEEN IN PLENTY POSTION – TO BE ATTACHED TO THE BACK OF THE NON HABITABLE TIMBER OUTBUILDING FACING MATURE TREES AWAY FROM DIRECT SUNLIGHT AND RAIN.

INSTALLATION HEIGHT – 2M FROM THE GROUND

SUPPLIER: RSPB

URL: https://shopping.rspb.org.uk/bird-feeders-boxes-tables/bird-houses-nest-boxes/garden-bird-nest-boxes/rspb-sparrow-terrace-nest-box.html?filters=searchTerm%3DBIRD%2520BOXES%26product_type%3DNest%2520box&page=1



RSPB Sparrow terrace nest box

★★★★☆ (27 Reviews)

Save £2 when you buy two promotional Nest boxes!

[Details](#)

Provides three separate nest boxes in one FSC® certified timber terrace, each with its own 32mm entrance hole. Beautifully made in the UK.

[Read full information](#)

£40.00

Quantity: In stock

– 1 +

[Add to Basket](#)

FREE UK delivery with orders over £50

Product description

Provides three separate nest boxes in one FSC® certified timber terrace, each with its own 32mm entrance hole. Beautifully made in the UK.

RSPB nest boxes provide a safe and snug place for birds to roost and nest. Unlike cheaper alternatives, our bird houses are made from sustainable FSC® certified timber and have excellent insulation properties. This makes them warm in winter and cool in summer. RSPB nest boxes are carefully designed with correct dimensions and ventilation, without perches for intruders to grip onto and threaten the occupants.

Product ID:R407816

Type of bird

House sparrow

Features

Measures 48 x 23 x 17cm

Advice

Which size nestbox hole for which bird?

25mm - blue tit, coal tit, marsh tit

32mm - great tit, tree sparrow, pied flycatcher, house sparrow, nuthatch, lesser spotted woodpecker. 32mm entry holes can, if you wish, be reduced to 25mm using a nest box plate (R0110).

B3 – BIRD BOXES

BIODIVERSITY ENHANCEMENT – PROVIDE A HABITAT FOR ROBINS & WRENS

POSTION – TO BE ATTACHED TO YOUNG OAK TREES

INSTALLATION HEIGHT – 2M FROM THE GROUND

SUPPLIER: RSPB

URL: <https://shopping.rspb.org.uk/bird-feeders-boxes-tables/bird-houses-nest-boxes/garden-bird-nest-boxes/apex-open-front-nestbox.html>



Apex open front nestbox

★★★★☆ (4 Reviews)

Save £2 when you buy two promotional Nest boxes!

[Details](#)

This Classic style open-front nest box is suitable for robins, wrens, pied wagtails and spotted flycatcher. [more](#)

£20.00

Quantity: In stock

– 1 +

[Add to Basket](#)

FREE UK delivery with orders over £50

Product description

This Classic style open-front nest box is suitable for robins, wrens, pied wagtails and spotted flycatcher.

Made in the UK from thick FSC® certified timber for strength and durability, it also has drainage holes in the base.

Installing your nestbox

For secure and stable fixing, there are two hanging tabs attached to the back of the nestbox, one at the top and one at the bottom. These tabs make it quick and easy to securely fix it in place. Screws not supplied.

With a wide range of expertly-designed bird houses to choose from, you can easily provide a safe, welcoming home in your garden for different wild birds. RSPB Shop also provides advice on where to locate your bird house. Help us give nature a home!

Product ID:R1073

Type of bird Robin/Wren

Advice

RSPB nest boxes are made with thick FSC® certified timber and will survive for many years, even without the use of preservatives.

If you do want to protect your nestbox further, use a water-based preservative (preferably one that complies with standard EN71 part 3 as safe for children's toys). Such paint/preservative types are clearly marked on the container, and are available from DIY stores and hardware shops.

Preservatives should only be applied to the outside of the box. Apply in the winter, when there is a low likelihood of occupancy. This will allow time for any remaining volatile components to evaporate.

For more information about siting a nest box please see the Advice section of the main RSPB website.

Specification

Width 23 cm Depth 17 cm Height 28 cm Open front

FSC

B4 – HEDGEHOG HOUSES

POSTION – UNDER THE OAK TREES CLOSE TO THE FOOT OF THE HEDGES. TRIAL AS MANY AS POSSIBLE IN VARIOUS LOCATIONS AND MONITOR USAGE.

SUPPLIER: RSPB

URL: <https://shopping.rspb.org.uk/wildlife-friendly-garden/wildlife-habitats/hedgehog-houses/rspb-silhouette-hedgehog-home.html>



RSPB Silhouette hedgehog home

★★★★★ (25 Reviews)

The Silhouette hedgehog home is a safe retreat for hedgehogs. With its gently-sloping roof and distinctive hedgehog silhouette design carved on the front, it's definitely a "des-res" for our spiky friends! It's safe too - the internal entrance is concealed, to help protect them from predators. Although it's cosy for the long winter, there are ventilation holes to aid air flow. The secure roof can be opened for inspection and cleaning.

[Read full information](#)

£60.00

Quantity:

- 1 +

In stock

Add to Basket

FREE UK delivery with orders over £50

Product description

The Silhouette hedgehog home is a safe retreat for hedgehogs. With its gently-sloping roof and distinctive hedgehog silhouette design carved on the front, it's definitely a "des-res" for our spiky friends!

It's safe too - the internal entrance is concealed, to help protect them from predators. Although it's cosy for the long winter, there are ventilation holes to aid air flow. The secure roof can be opened for inspection and cleaning.

The box may be used as a nest site from spring until June/July, and as shelter from poor weather and predators until their winter hibernation. They will typically hibernate between November and March dependent on the weather.

This hedgehog home comes with a pre-drilled camera hole, making it easier to install a wildlife camera if you have one.

The hedgehog home comes fully constructed, so you can place it in your garden straight away.

The roof unscrews and easily opens up so that the box can alternatively be used as a feeding station.

External measurement (including walls and roof): 53 x 40 x 23.5cm.

Internal measurement (hedgehog living space): 43 x 34 x 17cm.

Handmade from FSC® certified pine.

B5 – OWL BOX

**BIODIVERSITY ENHANCEMENT – PROVIDE A HABITAT FOR OWLS
POSITION – TO BE ATTACHED TO THE ONLY AVAILABLE MATURE OAK
INSTALLATION HEIGHT – 3M FROM THE GROUND**

SUPPLIER: RSPB

URL: <https://shopping.rspb.org.uk/bird-feeders-boxes-tables/bird-houses-nest-boxes/bird-prey-nest-boxes/barn-owl-nestbox.html>



Barn owl nestbox

★★★★★ [\(3 Reviews\)](#)

Our barn owl nest box is the perfect space for barn owls to roost and nest. This nest box features a cleaning hatch, a large landing shelf and a fledgling exercise area. It has a flat roof to provide further room for [more](#)

£170.00

Quantity: In stock

[Add to Basket](#)

FREE UK delivery with orders over £50



Product description

Our barn owl nest box is the perfect space for barn owls to roost and nest. This nest box features a cleaning hatch, a large landing shelf and a fledgling exercise area. It has a flat roof to provide further room for the young owls to exercise their wings.

With the sides of the nest box made from waterproof recycled plastic, this FSC® certified wooden box is designed to withstand all weather conditions.

As owls are a protected species, there are some things to look out for. Please read the information in the advice section before purchasing this nest box.

Product ID:R409964

Type of bird

Owls

Features

Suitable for external use, in a barn or farm outbuilding | Practical cleaning hatch | Lots of space for young owls

Specification

Width 57 cm Depth 49 cm Height 67 cm Weight 11.2 kg