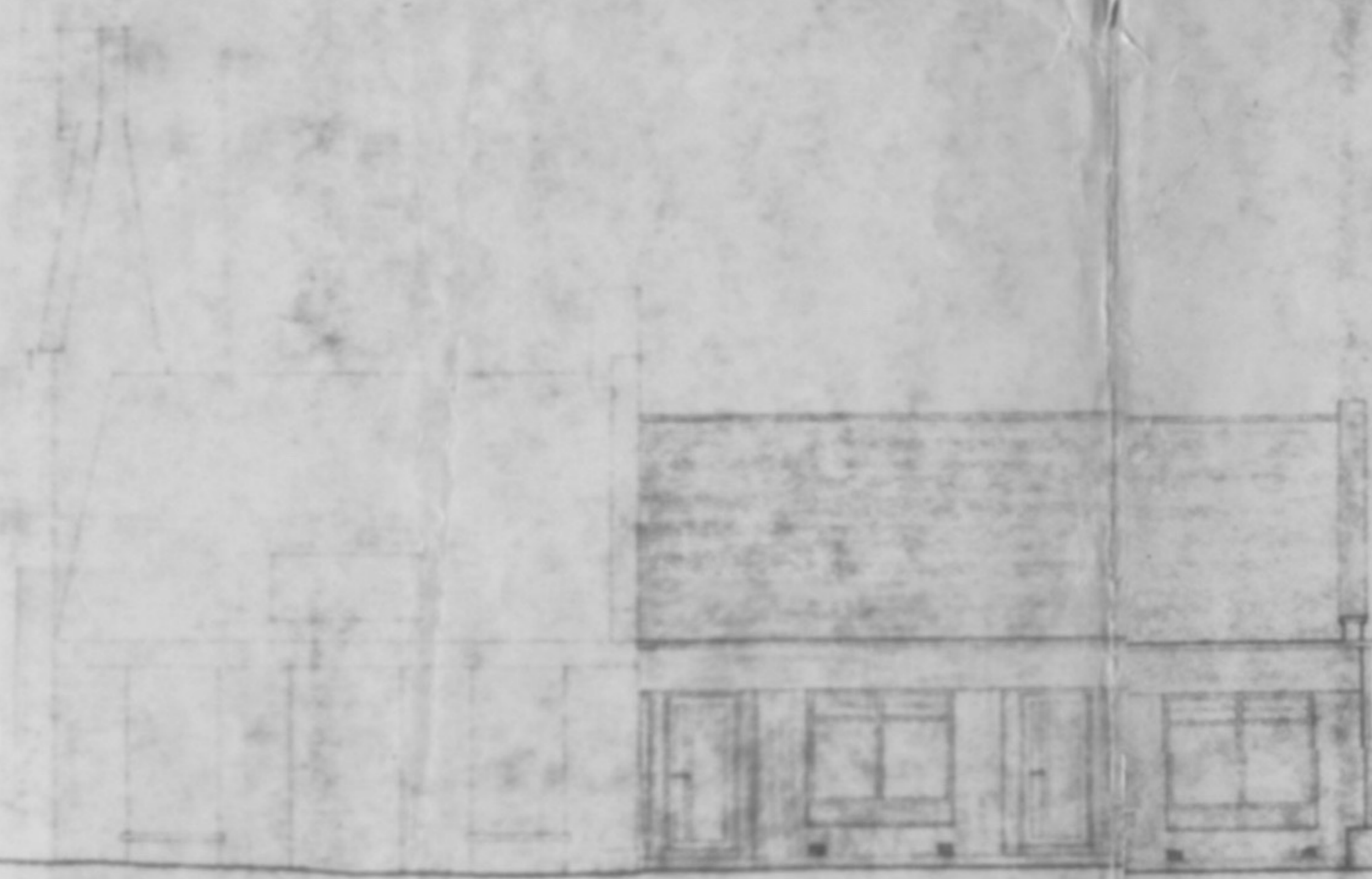


17x15
2.5 x 1.07

ATTENTION: CERTAIN ELEMENTS SHOWN ON THIS PLAN MAY BE SUBJECT TO ALTERATION OR LIMITATION BY VIRTUE OF CONDITIONS ATTACHED TO THE COUNCIL'S DECISION NOTICE. PLEASE CHECK CAREFULLY THE TERMS OF THE CERTIFICATE OF APPROVAL.



best quality second hand slates used
P.C. verge coping
P.C. ridge tiles
125mm black PVC gutter
53mm black PVC RWP
black stained marine ply fascia
weatherbeater aluminium windows (black)
with louvre panels for ventilation (2x1.5m)
jambor jansen aluminium door



P.C. verge coping
125mm black PVC gutter
53mm black PVC RWP
white sign for shop behind
smooth cement render at base

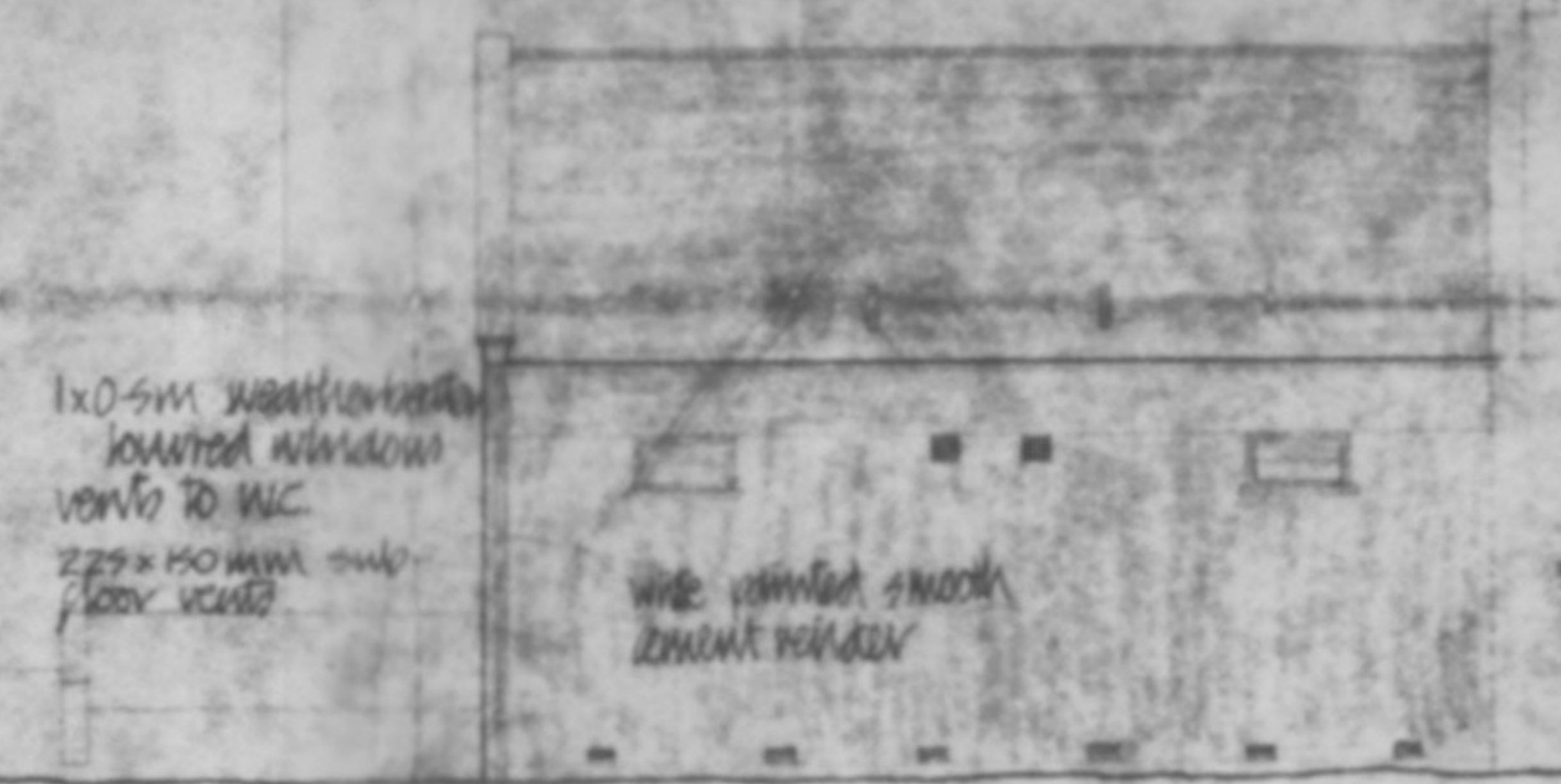
225 x 150 mm sub/floor vents

FRONT

END

REGIONAL DISTRICT COUNCIL
Country Planning Department
No. 81 P. 992
22 AUG 1981
[Signature]

P.C. ridge tiles
best quality second hand slates used
2 x 100mm 90° vent pipes
125mm black PVC gutter
53mm black PVC RWP
black stained marine ply fascia

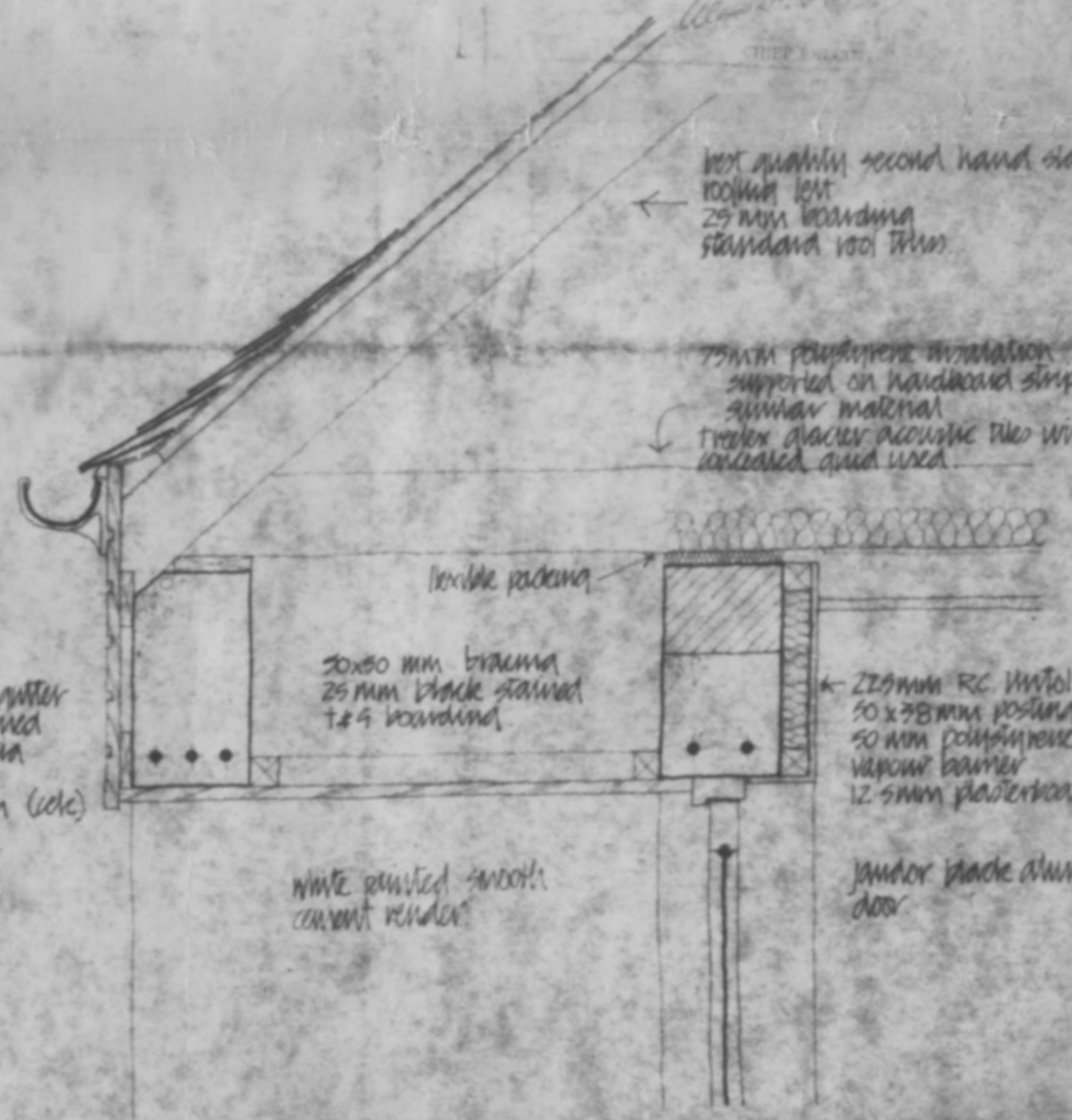


1x0.5m weatherbeater
louvre windows
vents to WC
225 x 150 mm sub-
floor vents

white painted smooth
cement render

225 x 150 mm vent
to shop

REAR



best quality second hand slates
roofing felt
25mm boarding
standard roof trim

75mm polystyrene insulation
supported on hardwood sills or
similar material
flexible acoustic tiles with
concealed grid used

flexible packing

30x50 mm batten
25mm black stained
t&g boarding

225mm RC lintol
50 x 38mm post and
50mm polystyrene insul.
vapour barrier
12.5mm plasterboard

125mm black PVC gutter
25mm black stained
marine ply fascia

25 x 150 mm batten (etc)
on R.C. lintol

white painted smooth
cement render

jambor black aluminium
door