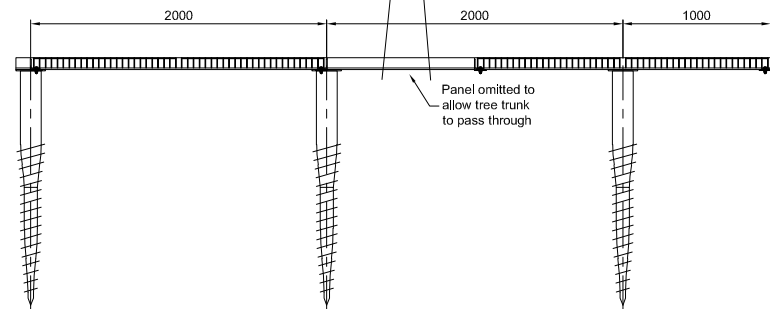


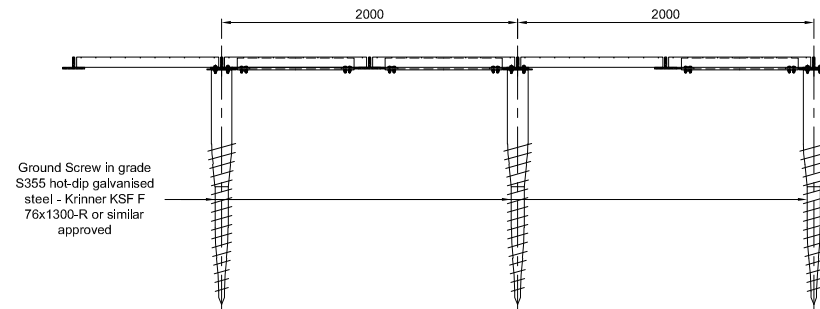
PLAN ON TYPICAL ROOTBRIDGE PLATFORM GRILLAGE

Scale 1:25



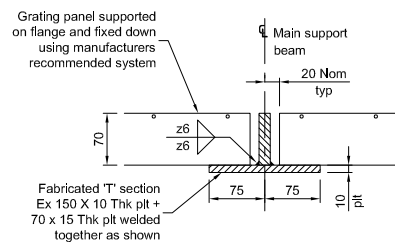
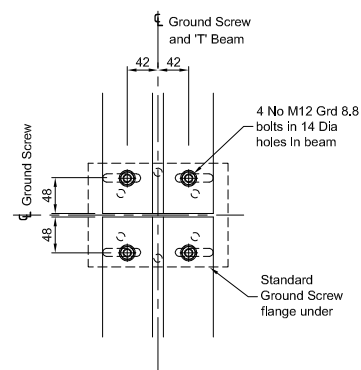
SECTION B-B

Scale 1:25



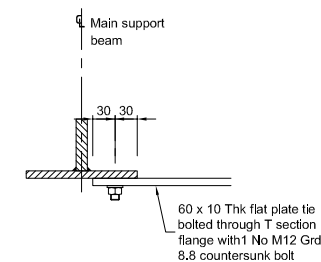
PLAN ON 'T' BEAM TO GROUND SCREW CONNECTION

Scale 1:5



MAIN BEAM DETAILS

Scale 1:5



SECTION SHOWING FLAT PLATE CONNECTION

Scale 1:5

Notes

GENERAL

1. This drawing is to be read in conjunction with all relevant Architect's, Engineer's and Specialist's drawings and the Specification.
 2. In case of a discrepancy between drawings or a lack of dimensions W.F. Brown Associates Limited must be consulted before work proceeds.
 3. All dimensions are in millimetres and all levels in metres, unless noted otherwise.
- DO NOT SCALE THIS DRAWING - IF IN DOUBT ASK.**

STEELWORK

1. All hot rolled steelwork to be grade S355JR to BS EN10025, all plates to be S275 unless noted otherwise.
2. All structural steelwork is to be fabricated and erected in accordance with the current National Structural Steelwork Specification for Building Construction.
3. Steelwork fabrication to be in accordance with BS5950 Part 2. All connections to be designed and detailed by the steelwork contractor / fabricator in accordance with BS5950.
4. All steelwork to comply with the National Structural Steelwork Specification for Building Construction - 5th Edition.
5. The steelwork contractor is to submit all marking plans, fabrication detail drawings and connection designs to the Engineer for comment, allowing 14 days for perusal prior to fabrication.
6. Care should be taken to ensure steel members are not marked by grinders etc. during fabrication and all weld splatters are to be cleaned off.
7. The steelwork contractor is to clean all mud and other deleterious materials from the steelwork and make good all areas of damaged paintwork (or galvanizing) prior to handing over the structure to the main contractor.
8. No site burning, welding or drilling to be undertaken without prior approval by the Engineer.

FINISHES

1. All steelwork to be shot blasted to SA2½ to remove all surface contamination, rust and millscale prior to applying a H.B. zinc phosphate primer with a dry film thickness of 75 microns.
2. All external steelwork to be hot dip galvanised to BS EN 150 1461. All breather holes to be positioned in end plates of hollow members etc. so as not to be visible after erection.

No.	Date	Revision / Issue	App'd
P1	05/10/17	Preliminary Issue	SPF

PRELIMINARY

Project Name
GREEN GRID SYSTEMS

W.F. Brown Associates Limited
CONSULTING CIVIL & STRUCTURAL ENGINEERS
The Old Hayloft, Pucknall Farm, Dores Lane, Braishfield, Romsey, Hampshire, SO51 0GJ.
Tel: 01794 368241 Fax: 01794 368991 Email: enquiries@wfa.co.uk Website: www.consulting-engineers.co.uk

ISO 9001
REGISTERED
UNASS
CERTIFIED
CARIS
Certificate Number: 3011

This drawing is the copyright of W.F. Brown Associates. It may not be copied, altered or reproduced in any way without their authority.
This drawing must not be scaled. Use figured dimensions only. IF IN DOUBT ASK!

Drawing Title
**ROOTBRIDGE SYSTEM
LIGHT DUTY OPTION
PLAN, SECTIONS AND DETAILS**

Created By S P FAGAN	Checked By O J STUBBS	Approved By
Scale AS INDICATED @ A1	Date OCTOBER 2017	
Dwg Number 17221-001	Rev. C1	