



**WESTBURY**  
GARDEN ROOMS





**With no two buildings the same, designing a garden room that is sympathetic to your home and well-suited to your needs, requires inspiration, understanding and perfect execution.**

**Westbury garden rooms are designed to be 'living' spaces in every sense of the word, often becoming the heart of the home, adding value not only to your property, but more importantly, to your way of life.**





Westbury orangeries have become distinguishable by their elegant open plan living and dining spaces. Our experienced designers work collaboratively with you every step of the way to design, illustrate and create your dream room. Whatever your vision, we are excited to help make it a reality.

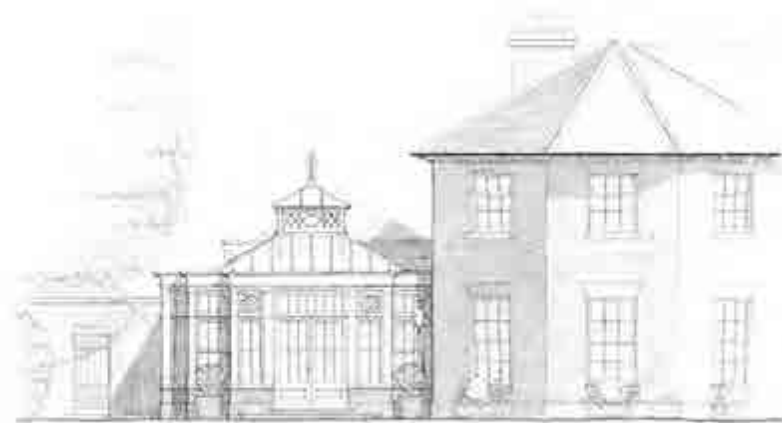
COLOUR: PEBBLE



# Architectural integrity

The sensitive conservation of existing architecture is paramount to the success of a well-designed garden room; a building that, whilst having a sense of presence, should also have an element of subtlety. In achieving this balance, a Westbury garden room blends seamlessly into the old, so that you cannot imagine your home without it.

Our designers are experts in creating integral spaces, listening to you, offering valuable advice, creating solutions and individually designing a garden room to suit you and your home in both function and form.



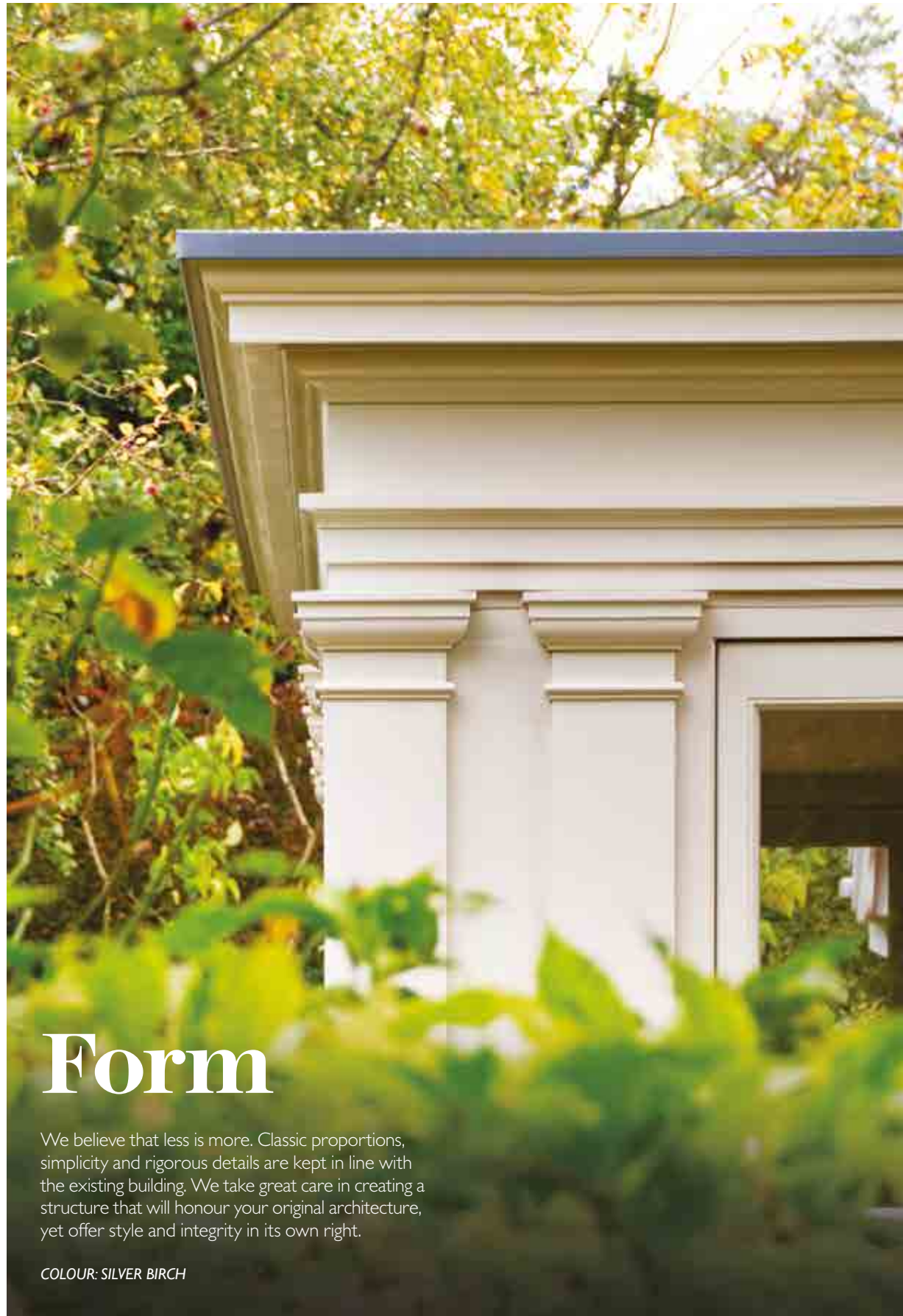




Set in acres of parkland, this magnificent home already offered ample space. However, it lacked a room from which the family could take advantage of their surroundings. An orangery was the perfect way to maximise the view beyond the home's natural confines.

EXTERNAL COLOUR: SILVER BIRCH  
INTERNAL COLOUR: WESTBURY WHITE





# Form

We believe that less is more. Classic proportions, simplicity and rigorous details are kept in line with the existing building. We take great care in creating a structure that will honour your original architecture, yet offer style and integrity in its own right.

COLOUR: SILVER BIRCH



# Function

Taking into consideration the principal purpose of an architectural space is key. For Westbury, looking beautiful simply isn't enough. The space must work for you and your loved ones, offering solutions and adding value to your day-to-day life.

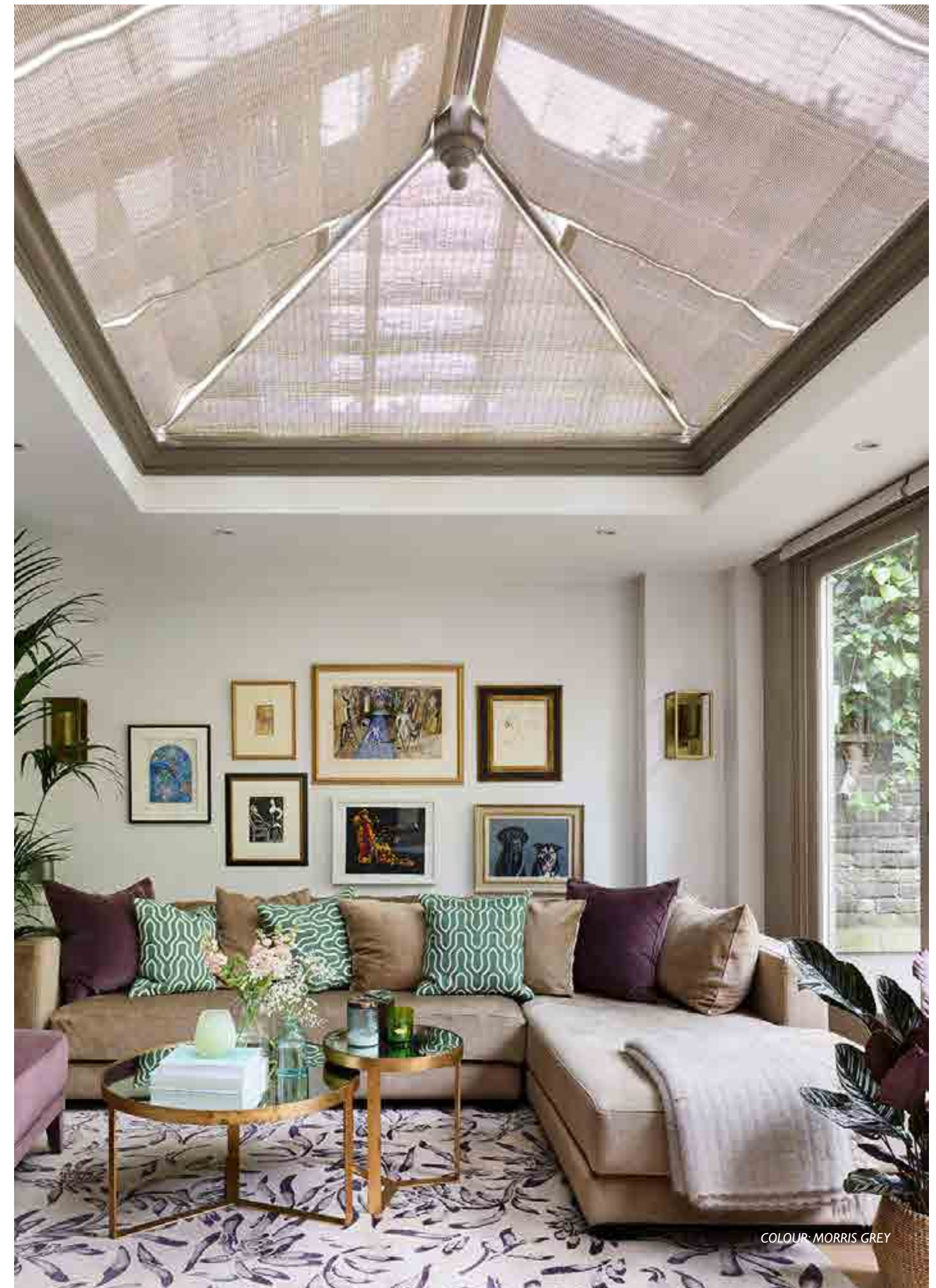
COLOUR: OS WHITE





# Feel

We understand the delicate combination of technical and aesthetic elements that make a home uniquely beautiful. When you choose a Westbury garden room we ensure the right balance of proportion, space, light and colour is incorporated to create the exclusive, luxury feel for which we are renowned; a room that feels truly special.





Small spaces can be transformed into amazing places. Shaded corners or side returns will benefit from rooms that make the most of the available space, improving the flow of the house.

This modest orangery, built onto the rear of an end-of-terrace townhouse, adds a new dimension to the lower-ground floor. Capitalising on its modest proportions, the new orangery gives this family home an extended and enhanced living space. The room is now flooded with natural light and provides the perfect space to relax and entertain friends.



COLOUR: MORRIS GREY





We understand the delicate combination of technical and aesthetic elements that make a home uniquely beautiful. When you choose a Westbury garden room, we ensure the right balance of proportion, space, light and colour is incorporated to create the exclusive, luxury feel for which we are renowned; a room that feels truly special.

COLOUR: HOLLAND LINEN



# Flow & Usability

Luxury is felt throughout an impeccably well-designed space, as it flows effortlessly from one area to the next. An excellent flow naturally guides you, or your eye, to specific areas of the room and takes into consideration the functionality of the space. Becoming a room that is sure to bring the entire family harmoniously together.



COLOUR: WESTBURY WHITE





COLOUR: WASH WHITE



COLOUR: WESTMORLAND



## Town

The rear of this property has windows of various sizes, many of which sit at different heights. This asymmetry adds to the period charm to the property; however, the homeowners were concerned that the height of the roof lantern would obscure the views from the bedroom window above it. In fact, we were able to adjust the pitch of the roof lantern to accommodate the sunken window without compromising the overall aesthetics of the orangery itself.





COLOUR: PORTLAND STONE



COLOUR: OS WHITE

## City

Cities can prove to be a hard place to find tranquillity and to connect with the outdoors. A garden room provides the perfect solution, offering practical living space that maximizes your connection with the nature that surrounds you, so that you can appreciate every flower, sunset or passing storm.







This impressive orangery has been built on top of the existing masonry garden room of a Chelsea townhouse overlooking the rear garden. The second storey area was previously a roof terrace used for occasional social soirées when the British weather allowed. This homeowner wished to turn the terrace into an all-weather space in order to make the most of both the house and the fantastic views over London.





COLOUR: OS WHITE



# Country

Set on the edge of a rural Buckinghamshire village, the homeowners of this generous detached Victorian property were looking to create an informal seating and dining area that would overlook their delightful garden.

A Westbury design typically incorporates large French doors of a greater proportion than other manufacturers supply. These doors open fully to ensure a perfect relationship between the indoors and out.





COLOUR: PORTLAND STONE





COLOUR: PORTLAND STONE

## Balance

Each Westbury garden room is unique. We allow the original house to direct and shape our design, to ensure a beautiful, balanced room that sits naturally and harmoniously in its surroundings. Whilst decorative details play an important role in creating exceptional rooms, scale is paramount.





COLOUR: WASH WHITE



## Made by Great people in Great Britain

At Westbury, we celebrate all that is Great about Britain. Diversity, architecture, heritage, and our rich history of design and innovation.

We design, craft and hand-finish every product that leaves our workshop in the UK. This allows us complete control and ownership over each and every project. Ensuring the correct storage of our timber, no shipping delays and an exquisite final product that is held to the highest standard.



Seeking an immediate sense of space and extravagance? A boarded roof lantern can provide a unique, contemporary solution. Creating the illusion of high and commanding ceilings and a magnificent focal point within the space.

Often the many surrounding glazed aspects of an orangery are enough to allow ample natural light to illuminate the space, so the addition of a boarded lantern is all that is needed to make the room feel instantly larger and more luxurious.

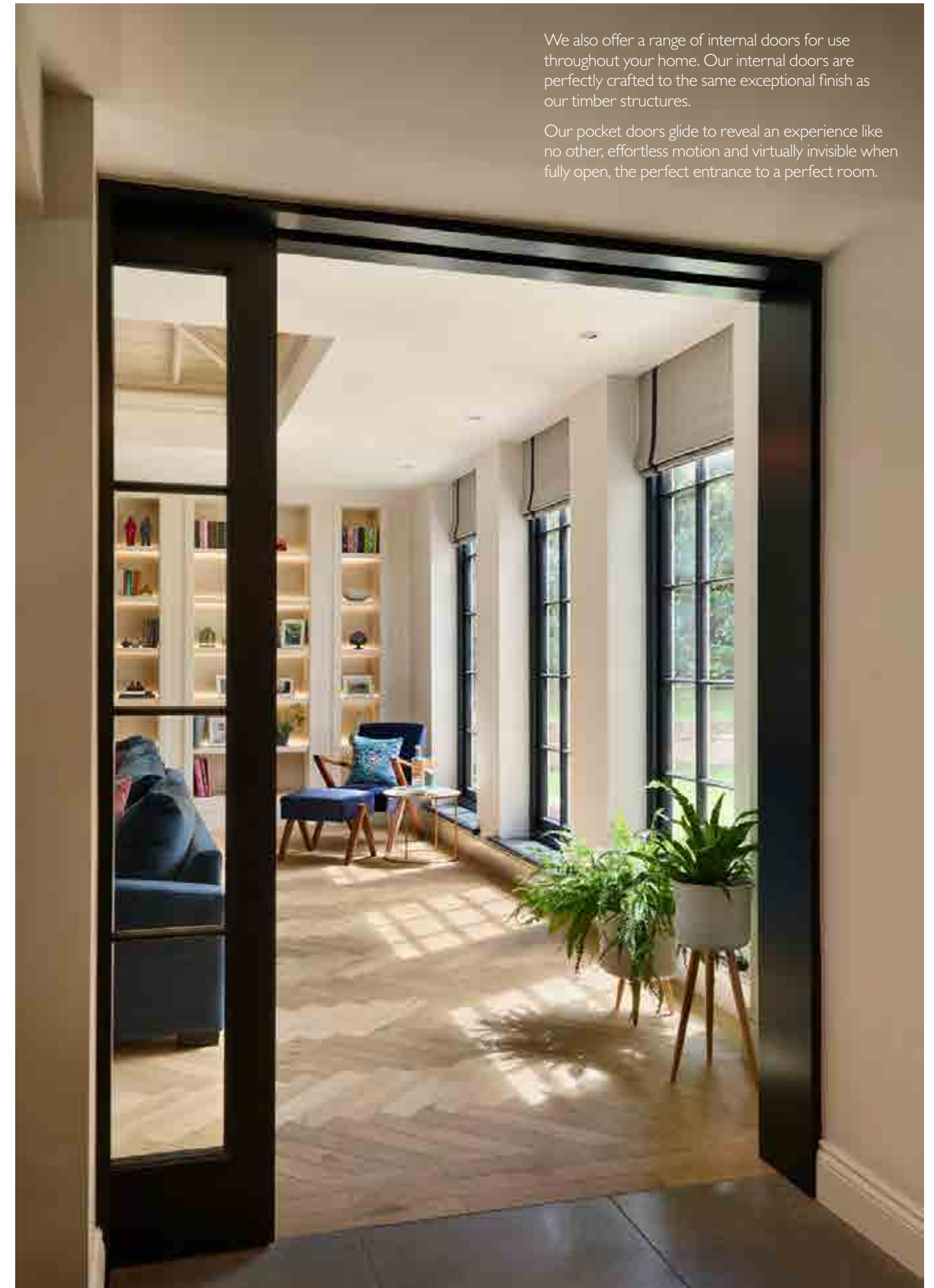


COLOUR: WESTBURY BLACK





EXTERNAL COLOUR: PORTLAND STONE  
INTERNAL COLOUR: WESTBURY BLACK



We also offer a range of internal doors for use throughout your home. Our internal doors are perfectly crafted to the same exceptional finish as our timber structures.

Our pocket doors glide to reveal an experience like no other, effortless motion and virtually invisible when fully open, the perfect entrance to a perfect room.





This stunning orangery design fulfils the wish list of many of our customers providing generous dining, seating and transition zones within one magnificent space. Set within a broad perimeter ceiling, the sense of light, height and volume is enhanced by the centrally placed lantern.

Each glass panel of a roof lantern is clamped to the rafter with a powder-coated aluminium capping, making it secure, watertight and incredibly easy to maintain.

[Read more about maintaining a Westbury garden room on page 91](#)





COLOUR: PORTLAND STONE

The use of natural brick on the far wall and rough-hewn stone flooring flags, introduce texture and colour within the building fabric. The beautifully relaxed feeling is brought together with the homeowner's addition of colour and texture in their stylish soft furnishings and window dressing.





# Rooms for all seasons

Whilst there is still a place in the right home for a traditional conservatory, a modern glazed extension is seldom used as an indoor garden. More often it serves as a dining area, family room, kitchen or a combination of these. As a result it needs to be comfortable and enjoyable every single day.

The technologies we use when constructing your Westbury garden room, ensure the building doesn't get too hot or too cold, so you can use it comfortably in all seasons.

Adequate ventilation, high performance glass and high insulation work together to keep the room temperature just right whatever the weather.



COLOUR: WASH WHITE



# Spring

Gone are the days of limiting your orangery furniture choices to wicker or rattan. We offer Westbury Sun Guard glazing to build a modern orangery. This neutral glass lets in a very high level of visible natural light but reduces glare and some of the UV rays from entering your orangery. Westbury Sun Guard together with a specialised film to laminate the glass, will reduce UV damage to furnishings, allowing interior design schemes to run throughout the home and into the orangery.







*What if I fall?  
Oh but my darling  
what if you fly?*

COLOUR: PORTLAND STONE





Maximising on light and space is essential to creating a multi-functional, central hub in any elegant family home. Unlike traditional glazed extensions, orangeries become true rooms within the home, never too hot or too cold. Our expert designers create functional spaces that quickly become the favourite room in the house.





# Summer

Incorporating more than one roof lantern in an orangery design requires careful thought and consideration by the designer. Here, two vented gable roofs are used to illuminate and identify independent spaces and their uses; an informal seating area, and a place to dine or work.

Westbury roof lanterns are equipped with automatic, thermostatic ventilation sashes. These open when the room warms up and close as it cools, or when the first droplets of rain fall.



COLOUR: WESTBURY WHITE





EXTERNAL COLOUR: FRENCH GREY  
INTERNAL COLOUR: WESTBURY WHITE







EXTERNAL COLOUR: WESTBURY BLACK  
INTERNAL COLOUR: PORTLAND STONE

An angled internal wall in this home creates a cosy drawing room which the family enjoy on cooler evenings. The main area serves as a multi-functional, open-plan space that celebrates the garden and makes the most of the sunshine.

One of the benefits of new glass technologies is that sun rooms can be furnished like any other room in the house. The glass reduces ultraviolet light entering the room, preventing furnishings and fabrics fading.

The contrasting exterior and interior joinery allows the building to have impact without distraction from the garden views. Compared to most standard paints, Westbury paints have greater clarity and are less prone to fading over time; all thanks to the greater quantities of pigment.

.....  
Read more about our paints and processes on page 90  
.....





# Autumn

Many clients choose to incorporate an open fireplace or wood burning stove into their design, as well as an underfloor heating system for day-to-day use. This is not for necessity, but to create an ambience during the colder months or a focal point in an open plan living space. A fireplace gives a room gravitas, making the new structure feel established and integral to the existing home.



At the homeowners request the door panels were replaced with glazing to provide a constant view of the garden for their two Tibetan spaniels.





COLOUR: WESTBURY WHITE

A client with impeccable taste knew exactly what she wanted her new garden room to look like. She felt that only Westbury fully understood her vision. We worked together on the design and layout to bring her ideas to life; her dream into a much anticipated reality.





The addition of Westbury windows and doors, as well as an orangery, transformed this whole house. Whilst Westbury windows may imitate a classic style, they incorporate innovative technologies that far outperform traditional glazing.

Read more about our high performance glazing methods on page 91

COLOUR: OS WHITE





The homes we live in don't always reflect the lifestyles we lead. We are often asked to extend original scullery kitchens to create more sociable and communal spaces, better suited to modern day living.

This house lacked a hub, but with the addition of a stunning orangery, the kitchen and garden are connected and the new, light-filled space is used by the whole family.

Read more about Westbury's range of bespoke windows and doors on page 89





# Winter

A striking black and oak orangery enhances the exterior design of this rural home, commanding attention in its rural landscape.

Inside, a large sliding door separates the new space, offering peace and sanctuary. Westbury designed the room to allow for a recessed bookcase along one wall and window seats along the others – perfect for enjoying restful days of reading and daydreaming.



Underfloor heating is a favoured addition, keeping your garden room a consistent temperature throughout the cold months. It gives flexibility to your interior design, allowing for lower cills and simple, unencumbered wall space.



During the cold winter months, your orangery comes into its own, allowing you to entertain and relax in comfort and warmth while enjoying the garden and wintry outside views. It provides an extension of a living space which makes for a great social area in which to experience the atmosphere of your midwinter garden.





# Making the new room your own

It is often the finishing touches that help to make a new room feel your own. Choosing the colour of your joinery is just the beginning of your journey.

We offer a range of top quality products to help enhance your finished garden room including stone floors, lighting and ironmongery. We will happily advise on other furnishings and fixtures should you feel you need a little more inspiration.



COLOUR: ZINC



# Supplied & enjoyed across Great Britain and Worldwide

We welcome enquires from outside of the UK and have completed projects all over the world.

We have successfully designed and manufactured buildings for residential and commercial projects located across Europe the United States & Asia.

We have worked very hard to improve and refine our garden rooms over the years, moving on from the glazing and manufacturing traditions of yesteryear. We now have a product that we're happy to send across the world, safe in the knowledge that it will perform as well in foreign climates as it does on our own soil.

Whilst purchasing a bespoke garden room from another country may seem daunting, we will ensure that your experience is as uncomplicated and as stress-free as possible.

As an international client, we can support you with all of the design and technical requirements for your project. We can work directly with homeowners, or alongside architects or construction professionals to oversee the installation process, if required.



## USA

An exciting challenge in terms of the scale of design and location, this modern conservatory is now the final piece of an enormous renovation project in Wisconsin, USA. The focus of the project brief was to create a modern timber sunroom that would act as an extension of the existing living space, but would also have a sense of grandeur that guests could admire as a symbol of prestige.





COLOUR: ROMAN BRONZE





COLOUR: WESTBURY WHITE

# Sri Lanka

Situated in the Tea Valley of the Nuwara Eliya district in central Sri Lanka, The Grand Hotel sits surrounded by lush green mountains and misty grey peaks. The hotel wanted to create a spacious, light-filled Grand Spa.

For this project, we provided a Roof Lantern, glazed door sets and over 100m of fascia and mouldings in cut lengths, made to measure for the 127-year-old building.



# Monmouthshire



## Commercial and large projects

Westbury welcomes commercial projects and has designed small and large garden rooms for hotels, restaurants and venue spaces nationwide.

We were chosen to design and build these intricate conservatories as part of the Bellevue Park restoration project, breathing new life into a public space reminiscent of the Victorian era.





Image: Beverley Boswell Designs Ltd



COLOUR: SILVER BIRCH

# Cumbria

Linthwaite House in Cumbria, undertook an incredible 12-month, renovation project including a 30-bedroom refurbishment plan. The project included the replacement of a small Victorian-style conservatory with a large orangery to create a spacious bar, lounge and dining area allowing guests to better enjoy the outstanding panoramic views of Windermere and the surrounding fells.





# Colour

Selecting colours can be an exciting yet daunting prospect. We see it as our job to simplify this process for you so we offer more than 20 specially selected finishes, chosen for their depth of colour and architectural integrity, though other colours can be mixed by request.

All Westbury joinery is fully finished with three coats of spray-applied microporous paint in our factory before being delivered to your home. Should any touch up paintwork be required on site, this will be undertaken by an experienced Westbury fitter or decorator.

We use specially formulated low-gloss paint that lasts up to three times longer than traditional paints and can also be used on interior woodwork. Due to the nature of our specialist timber, Accoya®, and its surface coating, your room is unlikely to need repainting for 10 years or more.

[Read more about our paint on page 90](#)







# Lighting

Good lighting is fundamental for creating, enhancing and transforming space. Glazed rooms require special lighting; during the day they are filled with natural light, but at night they become a completely new space again.

We can tailor a lighting solution to suit you, drawing on our years of experience and recommending specialist lighting suppliers whom we have tried and tested.





COLOUR: PORTLAND STONE



## Ironmongery & Security

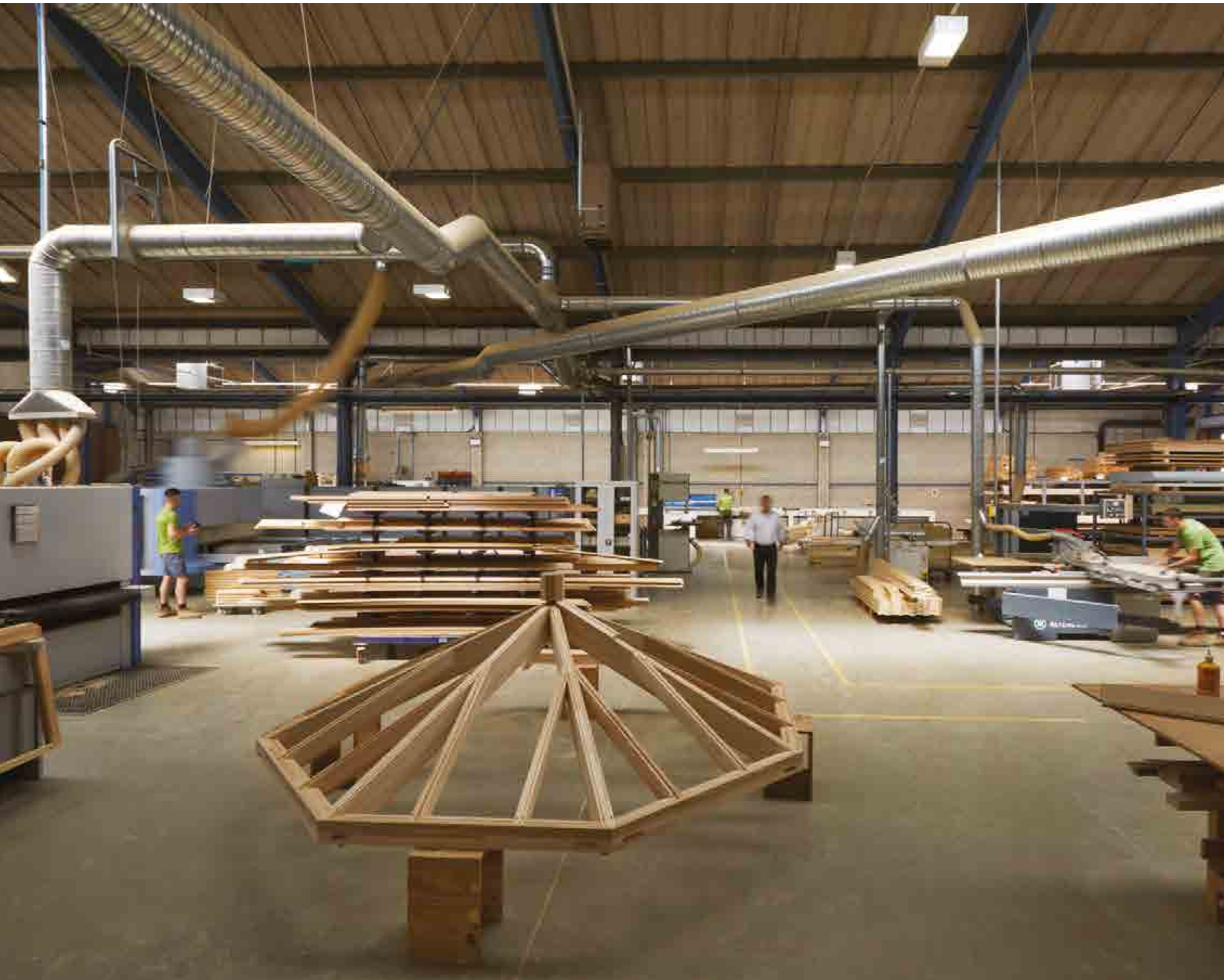
There is one part of your building that everyone will touch. Ironmongery needs to feel secure, solid and functional and yet remain visually attractive.

Our door handles are custom-designed and British-made by a specialist architectural hardware manufacturer, exclusively for our garden rooms. All other locks and ironmongery are European-made and of premium quality, selected for their high performance and aesthetic value.

In 2015 a new security standard, known as PAS24, was introduced to the Part Q building regulations. Despite only being applicable to new dwellings, we had our windows and doors tested to ensure they meet this specification and that all our garden rooms, whether on new or old homes, offer safety, security and peace of mind.

[Read more about product testing on page 91](#)





# Design Details

The beauty of a Westbury garden room is obvious, but the true value is only revealed when you discover the expertise, craftsmanship and passion that goes into every build; when what appears to be simple turns out to be ingenious.

Westbury's technical expertise has been achieved over 30 years of working with timber and glass to create superior products with absolute precision.

Whilst we embrace innovative technology and materials, we also appreciate the value of traditional craftsmanship, hand-finishing every product with an unrivalled attention to detail.

We have spent years researching every element of our product, right down to how we use the specialised glue to create joints that don't move, and the hidden fixing system that ensures both security and product lifetime.

Whilst at first inspection, a door may appear to be just a door, or a window just a window, it is the concealed details that truly make the difference - minimizing maintenance and maximizing longevity so that you and your family can enjoy a garden room that stands the test of time.

A Westbury garden room isn't just a garden room. Rather a space that holds on to that spark for decades to come. So, after 20 years of making memories, you will begin to see the difference the details have made.



# Sustainability

**...the masterful balance of meeting our needs, without jeopardising future generations' ability to do the same**

At Westbury, sustainability isn't another trend we've jumped on board with, but a culture of regard and respect that we live and breathe into each decision we make. Over the years significant ecological aspects have joined the design, material, and social aspects of this culture. Our pursuit for sustainability across all these aspects, harmonise perfectly and mutually benefit each other.

Why does Sustainability work so well at Westbury? It is based on our fundamental conviction that everything we manufacture, should bring joy to our clients for many years to come. In turn this means being committed to our people. We're proud to have been awarded a prestigious Gold status for Investors in People, by offering regular training, and protective health and safety measures, continuous improvement, and an understanding of employee recognition.

We choose to invest our energy into designing and manufacturing here in the UK, rather than in transport costs for importation from distant suppliers. This means that at Westbury, with our own workshop, we can design and build to the highest potential and support our local communities and the wider British economy.

We rely on experienced, skilled individuals who are committed to their craft and who enjoy being part of our company, from their training right through to retirement. The loyalty of our extraordinarily skilled people is based on appreciation and excellent working conditions, as well as our commitment to an active and fair partnership as a company, that is achieved by a collective agreement. These talents and expertise are also called for, to enable us to always achieve our utmost for our clients.

Our designs are developed with quality, longevity, and efficiency in mind. We believe in aiming to achieve minimal waste, not only throughout the manufacturing process, but also decades into the future. By designing buildings and offering expert advice, our structures stand the test of time.

Reducing the need to replace inadequate buildings (poor design/construction) that are not fit for purpose, and a waste of valuable resources. Our flat roofing system is designed to last a minimum of 35 years, and are all pre-cut to reduce wastage.

Our use of Accoya® produces a system that exhibits no joint movement, resulting in a product which requires minimal maintenance and will not need repainting for 12 years or more; Therefore, your Westbury product is estimated to only require repainting twice or thrice in your lifetime.

In addition, our methods of glazing - that exceed the GGF standards - are tested to prove low U-values, increasing the energy performance of our garden rooms once they are built. This in turn, helps every Westbury client reduce the energy involved in cooling their homes in the summer and heating over the winter.

At Westbury, we always source building materials from local suppliers and order in bulk to avoid frequent numbers of smaller deliveries. Investing in larger delivery vehicles to make fewer journeys and multiple deliveries at once.

All the timber we use must be sourced from controlled, FSC certified plantations and not tropical rain forests, so that no hardwood trees are felled. Guaranteeing that the plantations have been managed sustainably.

We meet our environmental objectives and improve the quality and longevity of our products by using a combination of Accoya® and European Redwood. The small amount of wood waste left-over from the manufacturing process is used to heat our factory facility via a biomass boiler.







# Windows & Doors

Once our clients have had a Westbury garden room built, they often return to us for replacement windows and doors for the rest of their home.

At first, we began using our spare capacity in the factory to supply these additional joinery items to our existing clients, but over many years, Westbury Windows & Joinery has grown into a successful business in its own right, manufacturing windows for renovation and new build projects across the UK.

We researched our product, materials and manufacturing technologies for two years, so that we could offer both superior quality and authentic aesthetics.

Each bespoke item, from a classic sash window to a contemporary entrance door, is manufactured with the same care, detail, timber, paint and ironmongery as with our garden rooms.

They have been independently tested for sound, heat loss, storm-proofing and security, and have passed with flying colours.



# Some things to consider...

## Our product design philosophy

Durability, stability and sustainability are central to our design philosophy. Our products are high quality, low maintenance and eco-friendly. Wood is the perfect material to achieve this.

Although we do incorporate some hardwood and aluminium into our designs, we only use these materials where they are truly necessary. Hardwood, for example, remains the most appropriate material for a door threshold where it is likely to see heavy footfall.

To ensure low maintenance, aluminium roof cappings are used to cover the exterior timber of our roof lanterns.

By using timber, Westbury create great depth and character to both the interior and exterior of your new structure; we can craft flush joints, sharp edges and traditional mouldings that are all too often disregarded by our contemporaries. Timber can also easily be repainted should you decide you want to change the colour in future.



## Paintwork that lasts 10 years or more

It is our understanding that our competitors ask customers to apply the final coat of paint on site, passing responsibility to their customer and in turn the validity for guarantee. When you invest in a Westbury product you get a fully finished and complete product. We know that a spray applied coat is approximately 4 times thicker, and more effective, than a brush-painted coat.

Westbury takes full responsibility for the final paint finish, giving the surface coating enhanced longevity and our customers the peace of mind that it meets the required standard for guarantee.

If washed down twice a year our timber joinery benefits from extended maintenance intervals and won't need repainting for 10 years or more.

## We use Accoya® timber, delivering extreme stability

The most important trait of timber is its dimensional stability. If a wooden product is not stable, its joints can move and its elements can twist and swell, allowing water ingress and rot to take hold.

All Westbury products are manufactured from Accoya® – a timber that has extreme stability, is moisture resistant and has Class 1 durability. It is a specialist material, and with the right expertise, it far exceeds the performance of traditionally renowned hardwoods.

Having little to no movement in the joinery means that your doors and windows will continue to open effortlessly. It also extends the lifetime of the surface coating, meaning your building will look better for longer and will require very little maintenance.

We have replaced many hardwood conservatories that were very durable but lacked Accoya's stability, eventually resulting in high maintenance for the homeowner and a shorter lifespan for the garden room. Accoya® makes life less complicated for everyone involved.



## Minimal maintenance

A Westbury garden room requires minimal maintenance. We recommend a biannual wash down of the joinery and we leave a pot of specialist sealer and paint in case there is damage to the woodwork from everyday use. Windows, doors, pilasters, fascias and mouldings are constructed from the same material and receive the same treatment so, over the years, there will be no element that fades faster (or slower) than the rest.

Due to the specialist materials we use, and our thorough paint application, a Westbury garden room is unlikely to need painting for 10 years or more, by which time the owner might decide to refresh its look with a new colour choice.



## Care & Maintenance

Regular cleaning of Accoya garden room will restore lustre to the finish and prolong the period between maintenance times. To assist with this recommended care routine, our paint supplier, Teknos, offers a Clean Kit containing everything you need to care for your new room. You can purchase these kits directly from us.

In some areas we offer a care and maintenance service, whereby our professional window cleaner will carry out a full clean and operational check of your Westbury garden room.

The service includes washing down all external Westbury paintwork, cleaning all windows and doors inside and out and roof glass externally as well as cleaning out gutters and hoppers.

Ask us for more about this service.

## Unrivalled customer satisfaction

At Westbury, we care about getting things right and that's why we ask our customers to help us identify opportunities for improvement as well as successes to celebrate.

Much of our business comes from recommendation so upholding our reputation and continuing to deliver excellent service is paramount to our success.

In our last customer satisfaction survey, 100% of participants said that we did everything we said we would do – in fact, 35% said we did everything and more!

## Westbury Guarantee

Our confidence in the quality of our product and the skill of our tradesmen is reflected in the fact that we offer a comprehensive guarantee on all of our garden rooms. This includes materials for a 10-year period and labour for a 5-year period.

Full details are provided on completion of your project together with a Care & Maintenance pack, which gives helpful guidance and tips about how to look after your garden room.



## Glass and Glazing

We have gone to great lengths to design a window that retains a traditional, multi-pane appearance but is far superior in its performance and susceptibility to condensation.

We glaze according to the Glass & Glazing Federation (GGF) standards, which requires manufacture using a single glazing unit enhanced with joinery or leaded detail to achieve a multi-pane look. Glazing in this way means that the windows are far less likely to fail, will perform (and even exceed) modern standard requirements, and yet still encompass the elegance of classic fenestration.

## The detail is in the design

As sticklers for detail, we are not satisfied with educated guesses nor estimated values when it comes to knowing how well our products perform. Our windows and doors go through rigorous testing, by third party UKAS accredited laboratories, in order for us to provide accurate results for energy efficiency, weatherproofing, acoustic testing and security.

Whichever company you choose to buy your garden room, windows or doors from, we encourage you to ask for copies of the certificates as it is all too easy for companies to estimate what their results might be, without having put their products through independent testing.





COLOUR: ROMAN BRONZE

## Next Steps

Give us a call to chat though your project ideas, we'd love to hear from you. Call our design team on 01245 326500 or email [design@westburygardenrooms.com](mailto:design@westburygardenrooms.com).

After an initial consultation, we will invite you to visit us at our showrooms and factory or arrange for a designer to visit you at your home. During this visit we will develop a clear understanding of the intended use of your new space and establish a provisional project budget. We will discuss variations in style and ascertain what would best suit your property.

Whilst on site, your designer will undertake a detailed survey, recording measurements and identifying any potential issues. They will follow up by drawing plans for your garden room and providing a full and transparent quotation, along with a conceptual illustration to help you visualise the finished building.

Westbury has existing relationships with planning and listed building officers as well as over 30 years' experience of building regulations. We submit designs in the knowledge they will overcome any issues or policies, resulting in a smooth and successful process.

We encourage you to visit us at our factory and showroom in South Woodham Ferrers, Essex.

We would be delighted to take you on a guided tour of our modern manufacturing facility, where craftsmanship and technology meet. You will see first-hand the time, effort and skill that we dedicate to each and every project.





## We encourage you to visit us

Our designs and styles are outstandingly different both visibly and structurally, so we highly recommend a visit to our factory and showrooms in Essex. This will help give you a much better understanding of what we offer.

To visit us by appointment, please call 01245 326500 or email [design@westburygardenrooms.com](mailto:design@westburygardenrooms.com)

Our showroom and workshop is located at 46-52 Cutlers Road, Saltcoats, South Woodham Ferrers, Essex, CM3 5XJ.



Our showroom features two Orangeries, various roof lanterns and other examples of our joinery for you to experience the quality and style of our builds, whilst also exploring the various finishing touches that will transform your project. You may also be interested in experiencing our specialist Workshop in action producing joinery with the latest technology and expertise.



**Choosing to invest in, and embark on, any building project is a big decision. It's important that you have confidence in us and can enjoy the journey, which is why we do all we can to ensure there are no surprises along the way.**

**With Westbury, you will work with a highly skilled designer, not a salesperson dressed as a designer. They will want to completely understand and consider your needs before providing you with a full and transparent quotation.**

**If planning permission is required, our team can manage this for you. Whilst we do not undertake the building works ourselves we will ensure your chosen contractor has a full understanding of our product requirements and ensure smooth communication throughout the process. So all you have to do is enjoy your ideas becoming reality.**

**We hope to welcome you to the truly unique Westbury lifestyle soon.**





## Dedicated Aftercare

Even after your project is complete our service is ongoing. We will care for your garden room for its lifetime, keeping thorough records of your project indefinitely. Should you ever require a paint match or need to replace a broken glass pane, we have all the information to hand to arrange prompt replacements. Our joinery and glass are given a 10-year guarantee and the Accoya timber has a 50-year anti-rot guarantee. When choosing Westbury you are in safe, reliable hands. Now and for the future.



**WESTBURY**  
GARDEN ROOMS

[westburygardenrooms.com](http://westburygardenrooms.com)

01245 326500

**Factory & Showrooms**

46-52 Cutlers Road, Saltcoats, South Woodham Ferrers, Essex, CM3 5XJ