

West Suffolk House, Western Way
Bury St Edmunds
Suffolk
IP33 3YU

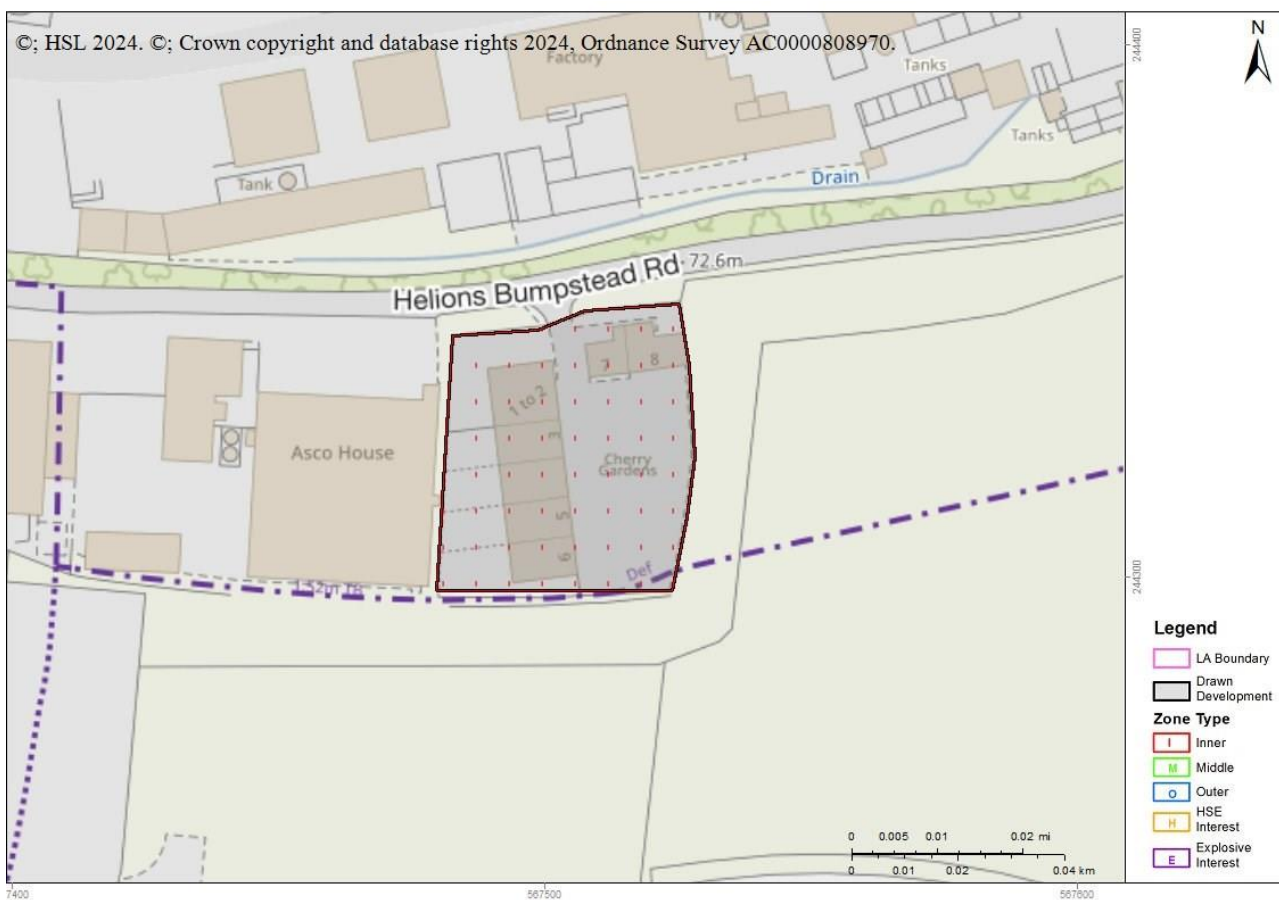
Advice : HSL-240220071604-582 Crosses Consultation Zone

Please enter further details about the proposed development by continuing with the enquiry on the HSE's Planning Advice Web App from the Previous Enquiries tab either now or at a later time, unless the Web App has stopped the process and notified you to contact HSE.

Your Ref: DC/24/0185/FUL

Development Name: Cherry Gardens, Helions Bumpstead Road, Haverhill CB9 7AA

Comments: Detached light industrial units



The proposed development site which you have identified currently lies within the consultation distance (CD) of at least one major hazard site and/or major accident hazard pipeline; HSE needs to be consulted on any developments on this site.

This advice report has been generated using information supplied by Alexa Burlow at West Suffolk on 20 February 2024.

You may wish to contact HSE's Planning Advice team to discuss the above enquiry result on 0203 028 3708 or by email at lupenquiries@hse.gov.uk.