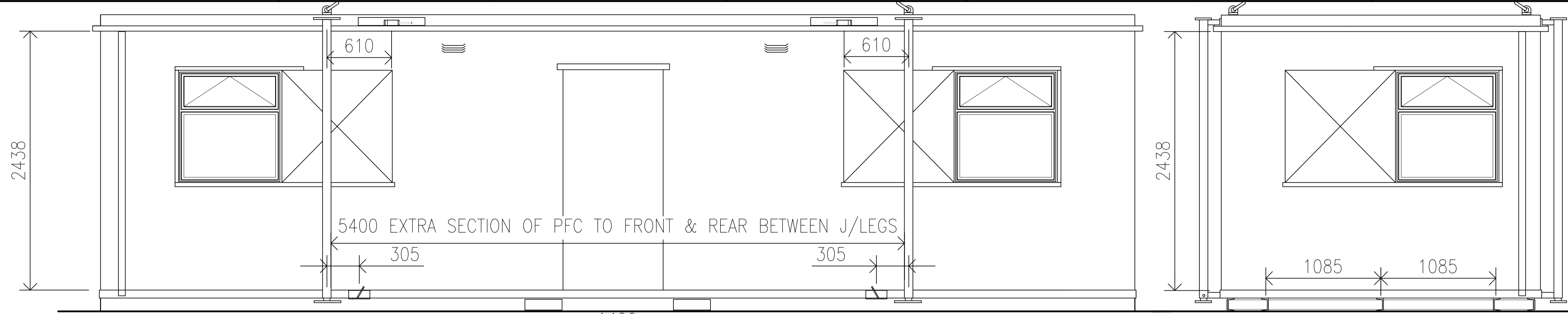


| | | | | | | | | | | | | | | | | | |
|-----|------------------------------------|---|--------------------|----------------|--------------------------------------|-----|----------------|---|---------------------|---|--------------------|----|-------------------------|---|-----------------------|-----------------------|-------------------------|
| NC | SINGLE NON-CORROSIVE LIGHT FITTING | ⎓ | SINGLE POLE SWITCH | ⎓ | SINGLE 13amp SWITCHED SOCKET OUTLET | 2kw | 2Kw CONVECTOR | ⎓ | GAS TAP | ⎓ | JACKLEG | BG | BREAK GLASS POINT | ⎓ | HAND DRIER | ▽ | HIGH LEVEL VENT |
| — | SINGLE FLUORESCENT LIGHT FITTING | ⎓ | TWO POLE SWITCH | ⎓ ² | TWIN 13amp SWITCHED SOCKET OUTLET | 3kw | 3Kw CONVECTOR | ☀ | GAS LAMP | ⎓ | LIFTING EYE | ⇒ | ALARM SOUNDER | ⎓ | WALL EXTRACTOR FAN | ▽/▽ | HIGH AND LOW LEVEL VENT |
| ⊗B | BULKHEAD LIGHT | ⎓ | TWO WAY SWITCH | ⎓ | 13amp SWITCHED FUSED SPUR | — | TUBULAR HEATER | ⎓ | GAS FIRE (4500 BTU) | ⎓ | EMERGENCY LIGHT | — | FIXED VANE LOUVRED VENT | ⎓ | ILLUMINATED EXIT SIGN | SYMBOLS LEGEND | |
| ⊗EB | EMERGENCY BULKHEAD LIGHT | ⎓ | PULL LIGHT SWITCH | ⎓ | 13amp SWITCHED FUSED SPUR WITH CABLE | 2kw | 2Kw TANGO FAN | ⎓ | FIRE ALARM PANEL | ⎓ | DISTRIBUTION BOARD | — | | | | | |

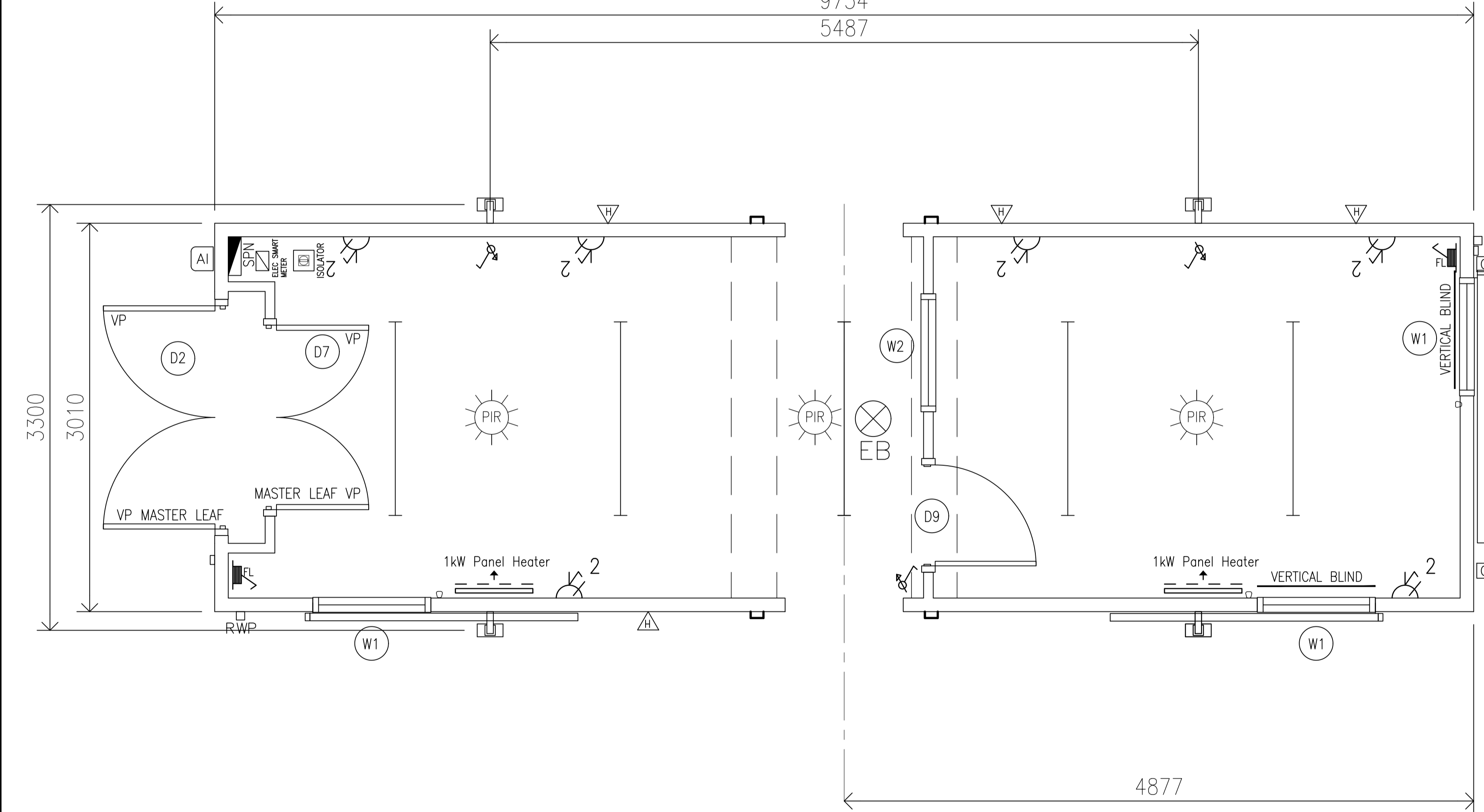


- SPECIFICATION ALL AS SUREGUARD BROCHURE SPECIFICATION:**
- EXTERNAL UNIT COLOUR TO BE BS 00 E 55 WHITE.
 - WALLS TO BE INSULATED WITH 35mm KINGSPAN TR31 & 90mm ROCKWOOL.
 - BASE TO BE INSULATED WITH 25mm JABLITE & 35mm KINGSPAN TR31.
 - ROOF TO BE INSULATED WITH 35mm KINGSPAN TR31 & 90mm ROCKWOOL.
 - WALLS TO BE LINED WITH VINYL FACED (MINSTER WHITE YORKSTONE) PLASTERBOARD.
 - CEILING TO BE LINED WITH VINYL FACED (WILKINS WHITE) PLASTERBOARD.
 - HIGH LEVEL VENTS ONLY.
 - TBS LOW LEVEL LIFTING REQUIRED.
 - FORK POCKETS REQUIRED.
 - 5No. 125x65mm PFC SKIDS (EXTERNAL TWO TO SITE BETWEEN JACKLEGS ONLY.)
 - 2No. SETS OF STAIRCASE BRACKETS TO BE INSTALLED.
 - 2No. SETS OF LINKING BRACKETS TO BE INSTALLED.
 - 18mm P5 OSB FLOOR SUBSTRATE THROUGHOUT.
 - 1.5mm VINYL FLOOR FINISH COLOUR GREY TO OFFICE.
 - CARPET TILES TO RECEPTION AREA COLOUR TO BE BLUE.
 - GREY PLASTIC ARCHTRIVE/SKIRTING.
 - LOBBY TO HAVE BLACK COVED SKIRTING.
 - DOOR / WINDOWS & LINERS TO MATCH IN COLOUR.
 - WHITE 'H'/'J' SECTIONS.
 - DRAFT EXCLUDER TO EXTERNAL DOORS / GASKET TO REM PANEL.
 - DOOR CLOSER TO EXTERNAL DOORS WHEN INSTALLED.
 - 4No. GUTTER CORNERS c/w 2No. RWP's TO BE INSTALLED.
 - DISCREET SIGNAGE.
 - FLEET NUMBER TO BE WELDED TO PERIMETER TRIM. WON: TBC FLEET No. TBC

- FITTINGS:**
- 2No. VERTICAL BLINDS TO OFFICE WINDOWS (1No. PER WINDOW)

- ELECTRICS:**
- 1No. SPN DISTRIBUTION BOARD c/w DEDICATED MCB FOR FLOODLIGHTS.
 - ALL WIRING TO BE SURFACE MOUNTED.
 - ALL SOCKETS / SWITCHES TO BE CONTRASTING COLOUR - GREY BACK PLATE WITH WHITE SWITCH
 - 1No. INTERNAL ISOLATOR.
 - 1No. APPLIANCE INLET.
 - 1No. SMART ELECTRIC METER.
 - 5No. 1500mm LONG LED LIGHT FITTINGS INCLUDING DIFFUSERS (4000K, 100L/W.)
 - 3No. PIR's TO CONTROL LIGHTING.
 - 3No. DIMMER SWITCHES COMPATIBLE WITH WITH PIR / LIGHTS.
 - 1No. NON-MAINTAINED EMERGENCY BULKHEAD.
 - 2No. 1kW DIMPLEX P100 PANEL HEATERS c/w BUILT IN DIGITAL THERMOSTAT, OPEN WINDOW SENSOR, TIMER & FUSED SPUR. HEATER TO AUTOMATICALLY TURN BACK ON & HOLD PROGRAM SHOULD POWER BE LOST.
 - EACH HEATER TO BE INSTALLED UPON ITS OWN DEDICATED CIRCUIT.
 - 3No. TWIN SOCKETS WITH DUAL USB CHARGER (USB A & USB C FAST CHARGE) INSTALLED @450mm AFFL. WITHIN RECEPTION AREA.
 - 3No. TWIN SOCKETS WITH DUAL USB CHARGER (USB A & USB C FAST CHARGE) INSTALLED @800mm AFFL. WITHIN OFFICE AREA.
 - 6No. SOCKET SHELVES.
 - 2No. CABLE ENTRY POINTS (CEP) SET 450mm AFFL c/w INT. BOX & EXT. COVER PLATE TO GABLE ENDS.
 - 2No. FUSED SPURS INSTALLED UNDER CEILING LEVEL (1No. ADJACENT MAINS BOARD, 1No. TO OPPOSITE GABLE END) FOR EXTERNAL LED FLOOD LIGHTS - LED FLOODLIGHTS BY OTHERS.
 - 2No. EXTERNALLY MOUNTED IP RATED CONNECTION BOXES c/w 1No. 10mm CABLE GLAND TO EACH FOR CABLE CONNECTION BETWEEN FUSED SPUR AND EXTERNAL LED FLOODLIGHTS.
 - ENCLOSURE FOR Z LINK c/w 3No. CONTACTORS.

- DOOR & WINDOW SPECIFICATION:**
- D2 - ANTI-VANDAL, DOUBLE SKINNED DOUBLE STEEL DOOR c/w 2No. 5 LEVER MORTICE DEADLOCKS, MORTICE LATCH, STEEL FURNITURE, DDA COMPLIANT VISION PANELS TO, 2No. SPRING BOLTS TO SLAVE LEAF, RETAINING HOOKS & DRAUGHT EXCLUDER. LEAF SIZE 876x2010mm, STRUCTURAL OPENING 1830x2070mm.
 - D7 - UPVC DOUBLE DOOR PULL HANDLES, PUSH PLATES, EURO CYLINDER LOCK & DRAUGHT EXCLUDER. FRAME SIZE 1530(w)x2048(H)mm FRAME STRUCTURAL OPENING 1537x2070mm.
 - D9 - TIMBER HOLLOW CORE OAK c/w LOCKABLE LATCH HANDLES & CHROME DOOR FURNITURE. LEAF SIZE 826x2080, STRUCTURAL OPENING 882x2080mm.
 - W1 - 908mmx1000mm WHITE UPVC/T.O.V. OUTWARD OPENING 4mm CLEAR DOUBLE GLAZED K TYPE WINDOW c/w TRICKLE VENTS & SLIDING SHUTTER. 915x1007mm STRUCTURAL OPENING, 1063mm CILL HEIGHT.
 - W2 - 908mmx1000mm GREY POWDER COATED ALUMINIUM/DOUBLE SLIDING OPENING 4mm CLEAR SINGLE GLAZED INTERNAL WINDOW. 915x1007mm STRUCTURAL OPENING, 1073mm CILL HEIGHT.



| | | | | | | | | |
|-----------------|---|----------------|---------------|---------------|---|---|------------------|----------------------------------|
| REVISION | | ENQUIRY NUMBER | SERIAL NUMBER | UNIT HANDLING |  | TITLE | | |
| REV | DETAILS OF AMENDMENT | TBC | TBC | LEFT | | 9754x3010mm SUREGUARD RECEPTION ECO B GREEN SPEC | | |
| P04 | 2No. RAINWATER PIPES ADDED & VERTICAL BLINDS ADDED TO OFFICE | | 10/05/2022 | MJ | | - | CLIENT | SUNBELT RENTALS - BALFOUR BEATTY |
| P05 | INTERNAL WALL LINING BOARD UPDATED TO MINSTER WHITE YORKSTONE | | 20/06/2022 | MJ | | - | DATE | 14.12.2021 |
| P03 | SOCKET POSITIONS UPDATED TO 800mm AFFL WITHIN OFFICE | | 18/03/2022 | MJ | | - | SCALES | 1:50 @ A3 |
| ORCHESTRATE | | | | | APSG3210GRE03 | DRAWING NUMBER | SB-01-ECOB-22-07 | |
| | | | | | | REVISION | P05 | |
| | | | | | | DRAWN | MJ | |
| | | | | | | CHECKED | | |