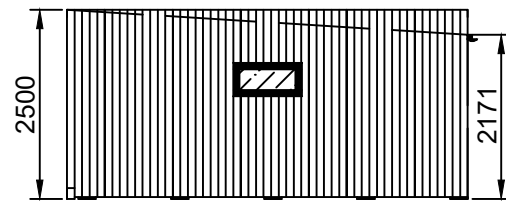
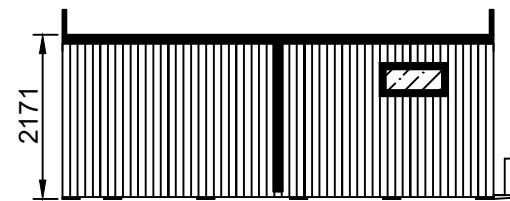


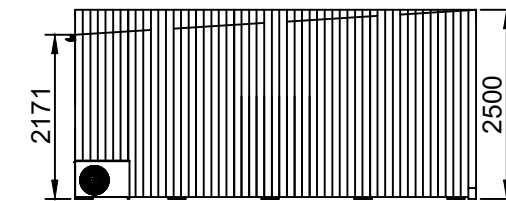
Front Elevation



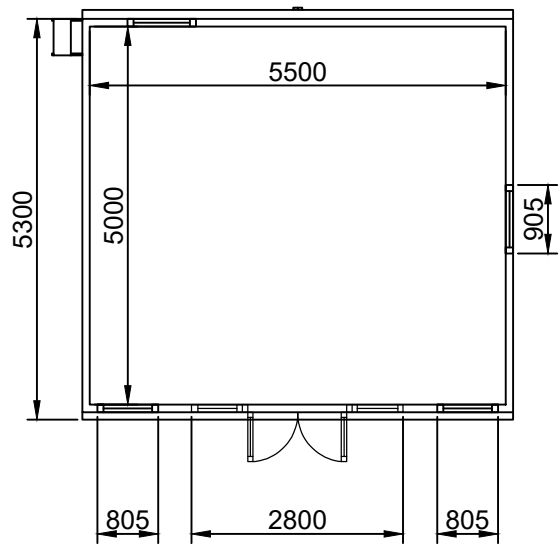
Right Elevation



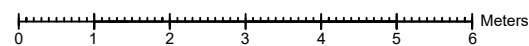
Rear Elevation



Left Elevation



Floor Plan



General Construction:

Roof:

60mm - 80mm of high density polyurethane insulation surrounded by 1mm steel plates

Floor:

80mm Interlocking steel coated structurally insulated floor panels sit on top of foundation system.

Walls:

Timber frame (Tanalised) with 50mm of Rockwool insulated cavity incorporating breathable foiled photon wrap.

Cladding:

Tanalised shiplap vertical redwood timber cladding to all elevations.

Doors:

French door/window (2800mm x 2070mm) with Planitherm glass

Windows:

Square window (805mm x 905mm, Opening: top-hung) with Planitherm glass

Square window (805mm x 905mm, Opening: top-hung) with Planitherm glass

Lozenge window (905mm x 440mm, Opening: top-hung) with Planitherm glass

Lozenge window (905mm x 440mm, Opening: top-hung) with Planitherm glass

Air-Conditioning condenser on left elevation.

Drawing Title: Monken Hadley C of E Primary School	Number: 1.	Scale: 1:100 All measurements in mm, setup for A3 printing.
Designed By: Becky Harper	Date: 09/02/2024	
Installation Address: Monken Hadley C Of E Primary School Camlet Way Barnet EN4 0NJ	Design: INSPIRATION - 5.5M X 5.0M	
		Reference: 230900175GRS1