

Intelligent EV Charger 7kW AC ICSW7C

The ICSW7C is suitable for workplace, destination and home charging.

Designed with the installer in mind, installation time is extremely quick, on average only 30 minutes.

7.2kW fast AC charging.

Up to 30 miles charging range per hour.

Single phase 230VAC.

No earth rod required (on TN-C-S PME system).

3G/4G sim, ethernet and WiFi ready.

Built in current detection 30mA AC and 6mA DC.

RFID authentication.

2.8" LCD display.

True OCPP 1.6J protocols.

Automatic minor fault recovery with configurable manual reset for RCD & Earth fault.

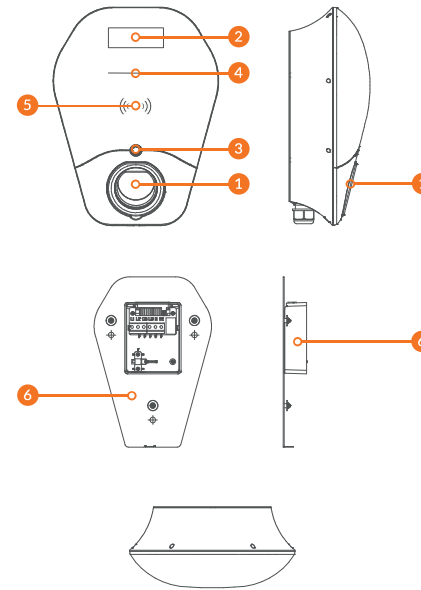
Independent back plate design for easy first fix.

All in one solution.

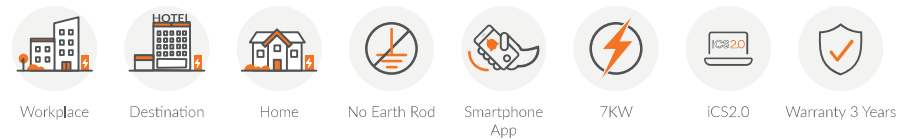
iCS2.0 smart charging software compatible.

iCS2.0Lite included for smart phone configuration and app control.

OZEV workplace and home scheme approved.
3 years warranty.



No	Item
1	Charging Socket
2	LCD Display Screen
3	Configurable Button
4	LED Indication
5	RFID Reader
6	First Fix Back Plate



ICSW7C	
Power Input	
Input Rating	230VAC + 20%, 32A
Standby Power	<5w
Power Output	
Output Rating	Single phase 7.2kw, 32A
Protection	
Over Current protection	Power output is terminated upon detection of over current 10%
Internal Residual Current Detection	30mA AC & 6mA DC
Output Protection	Power output is terminated upon detection of charging connector plug-out
Electrical Protection	Over current, short circuit, over voltage, under voltage, ground fault, lightning surge, over temperature protection
Current Detection	
PME	PME earth fault monitoring compliant with BS7671 regulation 722.411.4.1 method (iii)
Function & User Interface	
User Authentication	RFID reader (ISO/IEC 15693 and 14443A/B)
Buttons/Switches	Configurable physical button
Network Interface	Ethernet, 2.4G WiFi, 4G smart internet connection, hot spot mode
Charging protocol	Mode 3
Environment	
Ingress Protection	IP55
Mechanical	
Charging Interface	Type 2 socket (IEC 62196)
Mounting Type	Wall or Post (Post supplied separately)
Dimension (W x H x D)	269 x 360 x 146 mm
Regulation & Certification	
Certificate	CE, IEC61851-1
OCPP	Full OCPP 1.6J support