

Thornton Road

Key

( Revision )	( Date )	( Description )
00	15.02.24	Planning Application London Borough of Croydon

*note:*  
 When this drawing is issued in uncontrolled CAD format it will be accompanied by a PDF version and is issued to enable the recipient to prepare their own documents / models / drawings for which they are solely responsible. The recipient should report all drawing errors, omissions and discrepancies to the architect. All dimensions should be checked on site by the contractor and such dimensions shall be the contractors responsibility.  
 Pencilmen Architects Limited accepts no responsibility or liability for:  
 1) Any use of this drawing by parties other than the party for whom it was prepared or for purposes other than those for which it was prepared; 2) Any alterations or additions to or discrepancies arising out of changes to the background information on which the drawings are based that was current at the time of issue; 3) Any loss or degradation of the information held in this drawing resulting from the translation from the original file format to any other file format; 4) The accuracy of survey information provided by others or for any costs, claims, proceedings and expenses arising out of reliance on such information; 5) Any scaling from this drawing other than by the local planning authority solely for the purposes of the planning application to which it relates.

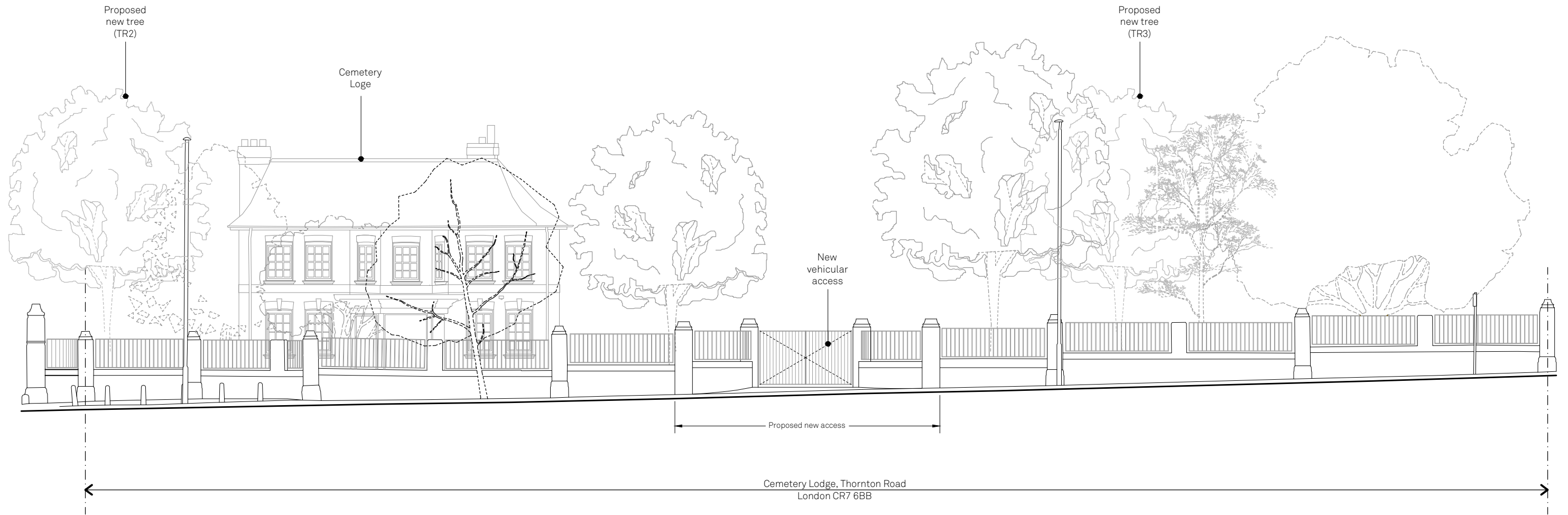
**Pencilmen** LON LSB  
 Pencilmen Architects Ltd  
 81 Rivington Street, London EC2A 3AY  
 www.pencilmen.co.uk

Job title: **Cemetery Lodge, Thornton Road, CR7 6BB**      status: **Planning**

Drawing title / location: **Floor Plan (PROPOSED)**      scale: **1:200@A3**

Drawing (Project) (Zone) (Source) (Series) (Drawing) (Revision)  
**2312 - A 02 101 00**

© Pencilmen Architects Limited



Key

--

( Revision )	( Date )	( Description )
00	15.02.24	Planning Application London Borough of Croydon

*note:*  
 When this drawing is issued in uncontrolled CAD format it will be accompanied by a PDF version and is issued to enable the recipient to prepare their own documents / models / drawings for which they are solely responsible. The recipient should report all drawing errors, omissions and discrepancies to the architect. All dimensions should be checked on site by the contractor and such dimensions shall be the contractors responsibility.  
 Pencilmen Architects Limited accepts no responsibility or liability for:  
 1) Any use of this drawing by parties other than the party for whom it was prepared or for purposes other than those for which it was prepared; 2) Any alterations or additions to or discrepancies arising out of changes to the background information on which the drawings are based that was current at the time of issue; 3) Any loss or degradation of the information held in this drawing resulting from the translation from the original file format to any other file format; 4) The accuracy of survey information provided by others or for any costs, claims, proceedings and expenses arising out of reliance on such information; 5) Any scaling from this drawing other than by the local planning authority solely for the purposes of the planning application to which it relates.

**Pencilmen** LDN LSB

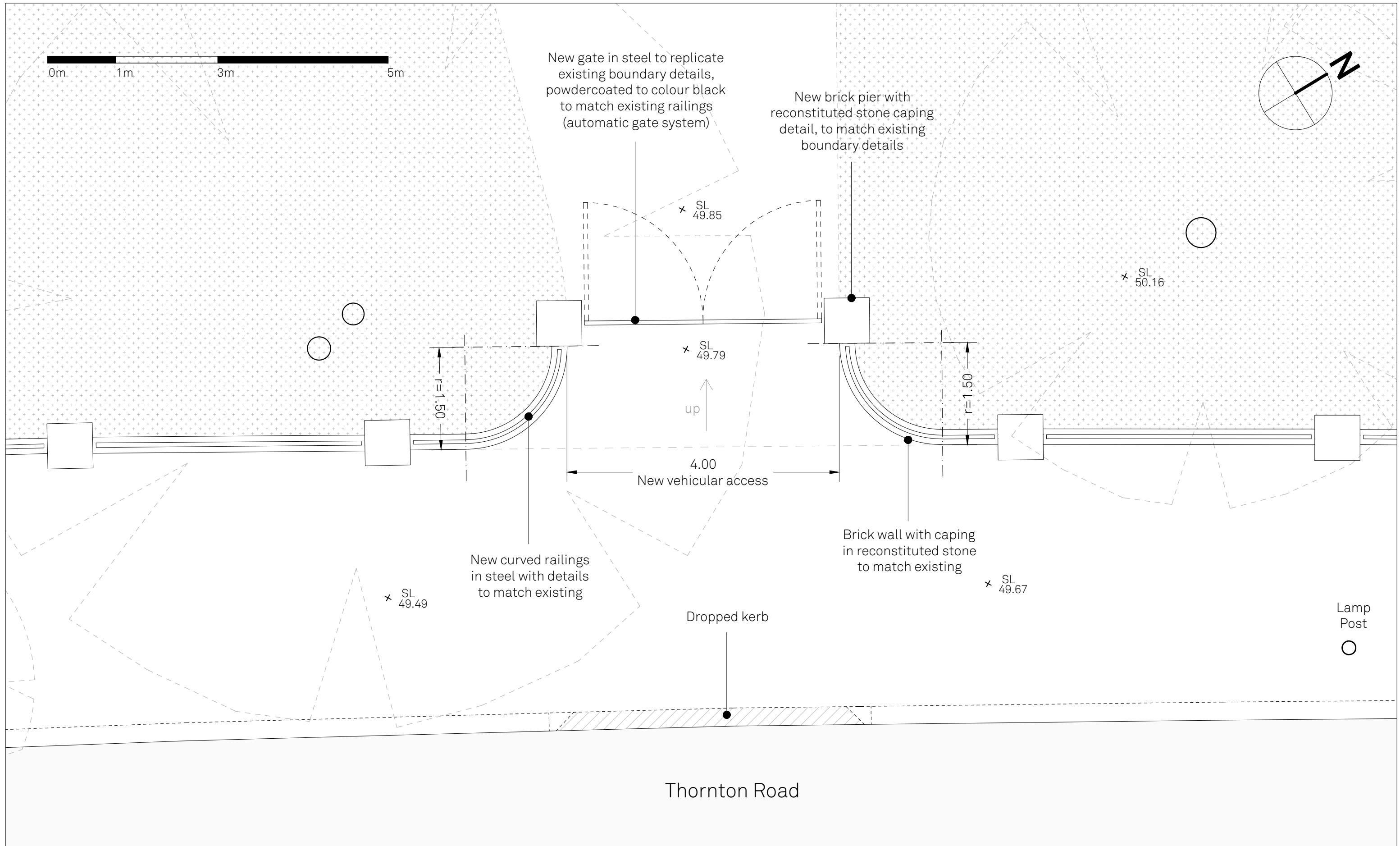
Pencilmen Architects Ltd  
 81 Rivington Street, London EC2A 3AY  
 www.pencilmen.co.uk

Job title: **Cemetery Lodge, Thornton Road, CR7 6BB** Planning

Drawing title / location: **Thornton Road Elevation (PROPOSED)** scale: **1:150@A3**

Drawing (Project) (Zone) (Source) (Series) (Drawing) (Revision)  
**2312 - A 02 201 00**

© Pencilmen Architects Limited



Thornton Road

( Revision )	( Date )	( Description )
00	15.02.24	Planning Application London Borough of Croydon

**note:**  
 When this drawing is issued in uncontrolled CAD format it will be accompanied by a PDF version and is issued to enable the recipient to prepare their own documents / models / drawings for which they are solely responsible. The recipient should report all drawing errors, omissions and discrepancies to the architect. All dimensions should be checked on site by the contractor and such dimensions shall be the contractors responsibility.  
 Pencilmen Architects Limited accepts no responsibility or liability for:  
 1) Any use of this drawing by parties other than the party for whom it was prepared or for purposes other than those for which it was prepared; 2) Any alterations or additions to or discrepancies arising out of changes to the background information on which the drawings are based that was current at the time of issue; 3) Any loss or degradation of the information held in this drawing resulting from the translation from the original file format to any other file format; 4) The accuracy of survey information provided by others or for any costs, claims, proceedings and expenses arising out of reliance on such information; 5) Any scaling from this drawing other than by the local planning authority solely for the purposes of the planning application to which it relates.

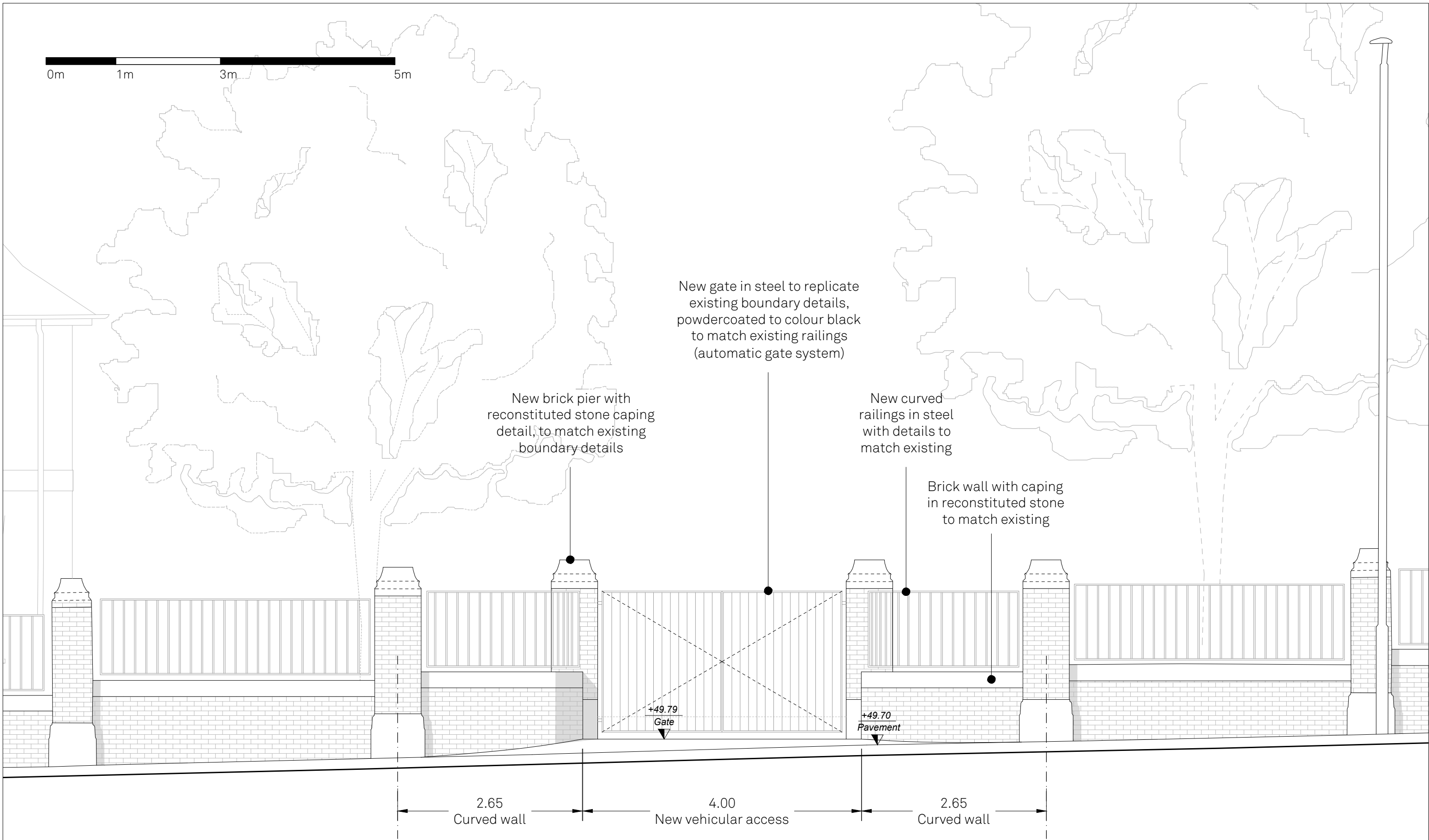
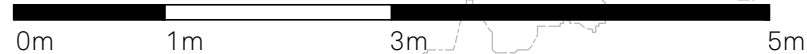
**Pencilmen** LBN LSB  
 Pencilmen Architects Ltd  
 81 Rivington Street, London EC2A 3AY  
 www.pencilmen.co.uk

**Job title**  
 Cemetery Lodge, Thornton Road, CR7 6BB **Planning**

**Drawing title / location**  
 Floor Plan Detail (PROPOSED) **1:50@A3**

**Drawing** ( Project ) ( Zone ) ( Source ) ( Series ) ( Drawing ) ( Revision )  
**2312 - A 02 401 00**

© Pencilmen Architects Limited



( Revision )	( Date )	( Description )
00	15.02.24	Planning Application London Borough of Croydon

**Key**  
--

note:  
When this drawing is issued in uncontrolled CAD format it will be accompanied by a PDF version and is issued to enable the recipient to prepare their own documents / models / drawings for which they are solely responsible. The recipient should report all drawing errors, omissions and discrepancies to the architect. All dimensions should be checked on site by the contractor and such dimensions shall be the contractors responsibility.  
Pencilmen Architects Limited accepts no responsibility or liability for:  
1) Any use of this drawing by parties other than the party for whom it was prepared or for purposes other than those for which it was prepared; 2) Any alterations or additions to or discrepancies arising out of changes to the background information on which the drawings are based that was current at the time of issue; 3) Any loss or degradation of the information held in this drawing resulting from the translation from the original file format to any other file format; 4) The accuracy of survey information provided by others or for any costs, claims, proceedings and expenses arising out of reliance on such information; 5) Any scaling from this drawing other than by the local planning authority solely for the purposes of the planning application to which it relates.

**Pencilmen** LBN LSB  
Pencilmen Architects Ltd  
81 Rivington Street, London EC2A 3AY  
www.pencilmen.co.uk

Job title  
**Cemetery Lodge, Thornton Road, CR7 6BB**

status  
**Planning**

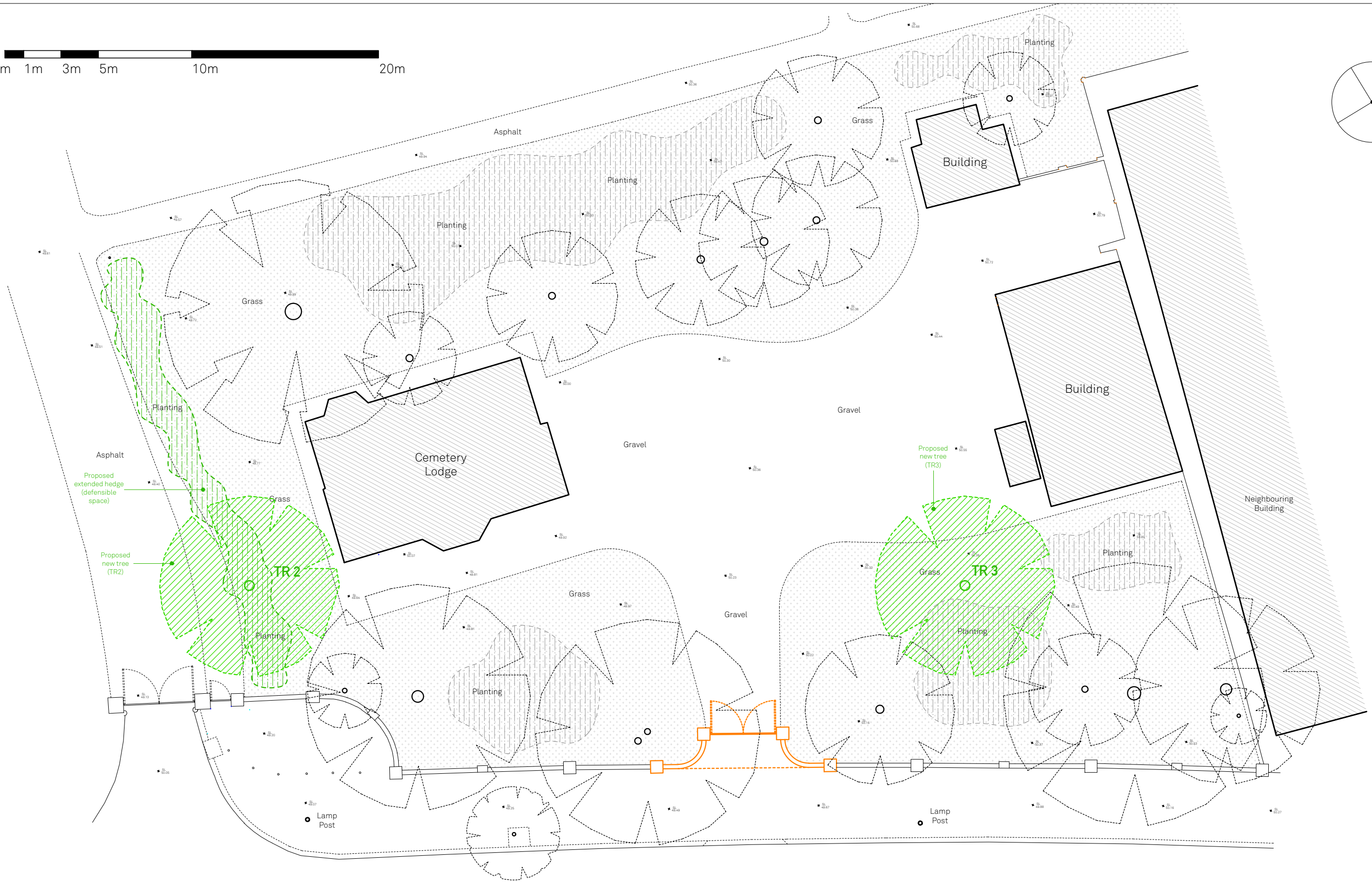
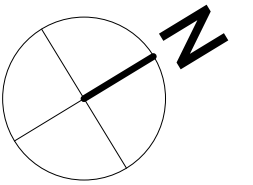
drawing title / location  
**Facade Detail (PROPOSED)**

scale  
**1:50@A3**

Drawing (Project) (Zone) (Source) (Series) (Drawing) (Revision)  
**2312 - A 02 402 00**

© Pencilmen Architects Limited





Thornton Road

Key	
	Tree Proposed
	Proposed Gate

( Revision )	( Date )	( Description )
00	15.02.24	Planning Application London Borough of Croydon

**note:**  
When this drawing is issued in uncontrolled CAD format it will be accompanied by a PDF version and is issued to enable the recipient to prepare their own documents / models / drawings for which they are solely responsible. The recipient should report all drawing errors, omissions and discrepancies to the architect. All dimensions should be checked on site by the contractor and such dimensions shall be the contractors responsibility.

Pencilmen Architects Limited accepts no responsibility or liability for:  
1) Any use of this drawing by parties other than the party for whom it was prepared or for purposes other than those for which it was prepared; 2) Any alterations or additions to or discrepancies arising out of changes to the background information on which the drawings are based that was current at the time of issue; 3) Any loss or degradation of the information held in this drawing resulting from the translation from the original file format to any other file format; 4) The accuracy of survey information provided by others or for any costs, claims, proceedings and expenses arising out of reliance on such information; 5) Any scaling from this drawing other than by the local planning authority solely for the purposes of the planning application to which it relates.

**Pencilmen** LON LSB  
Pencilmen Architects Ltd  
81 Rivington Street, London EC2A 3AY  
www.pencilmen.co.uk

Job title: Cemetery Lodge, Thornton Road, CR7 6BB  
status: Planning

Drawing title / location: Proposed Planting Plan  
scale: 1:200@A3

Drawing	( Project )	( Zone )	( Source )	( Series )	( Drawing )	( Revision )
<b>2312 - A 02 901 00</b>						

© Pencilmen Architects Limited