

Thornton Road

Key

--

(Revision)	(Date)	(Description)
00	15.02.24	Planning Application London Borough of Croydon

note:
When this drawing is issued in uncontrolled CAD format it will be accompanied by a PDF version and is issued to enable the recipient to prepare their own documents / models / drawings for which they are solely responsible. The recipient should report all drawing errors, omissions and discrepancies to the architect. All dimensions should be checked on site by the contractor and such dimensions shall be the contractors responsibility.

Pencilmen Architects Limited accepts no responsibility or liability for:
1) Any use of this drawing by parties other than the party for whom it was prepared or for purposes other than those for which it was prepared; 2) Any alterations or additions to or discrepancies arising out of changes to the background information on which the drawings are based that was current at the time of issue; 3) Any loss or degradation of the information held in this drawing resulting from the translation from the original file format to any other file format; 4) The accuracy of survey information provided by others or for any costs, claims, proceedings and expenses arising out of reliance on such information; 5) Any scaling from this drawing other than by the local planning authority solely for the purposes of the planning application to which it relates.

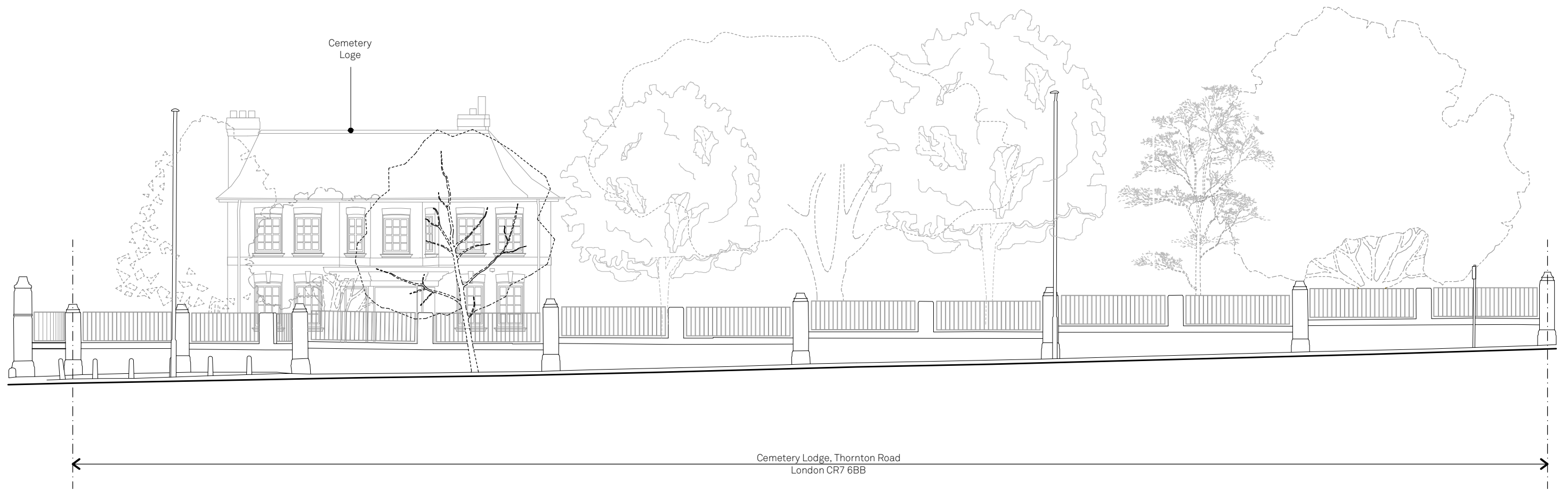
Pencilmen LON LSB
Pencilmen Architects Ltd
81 Rivington Street, London EC2A 3AY
www.pencilmen.co.uk

Job title: **Cemetery Lodge, Thornton Road, CR7 6BB** status: **Planning**

Drawing title / location: **Floor Plan (EXISTING)** scale: **1:200@A3**

Drawing (Project) (Zone) (Source) (Series) (Drawing) (Revision)
2312 - A 01 101 00

© Pencilmen Architects Limited



Key	(Revision)	(Date)	(Description)
--	00	15.02.24	Planning Application London Borough of Croydon

note:
 When this drawing is issued in uncontrolled CAD format it will be accompanied by a PDF version and is issued to enable the recipient to prepare their own documents / models / drawings for which they are solely responsible. The recipient should report all drawing errors, omissions and discrepancies to the architect. All dimensions should be checked on site by the contractor and such dimensions shall be the contractors responsibility.

Pencilmen Architects Limited accepts no responsibility or liability for:

1) Any use of this drawing by parties other than the party for whom it was prepared or for purposes other than those for which it was prepared; 2) Any alterations or additions to or discrepancies arising out of changes to the background information on which the drawings are based that was current at the time of issue; 3) Any loss or degradation of the information held in this drawing resulting from the translation from the original file format to any other file format; 4) The accuracy of survey information provided by others or for any costs, claims, proceedings and expenses arising out of reliance on such information; 5) Any scaling from this drawing other than by the local planning authority solely for the purposes of the planning application to which it relates.

Pencilmen LBN LSB
 81 Rivington Street, London EC2A 3AY
 www.pencilmen.co.uk

Job title
Cemetery Lodge, Thornton Road, CR7 6BB

status
Planning

drawing title / location
Thornton Road Elevation (EXISTING)

scale
1:150@A3

Drawing (Project) (Zone) (Source) (Series) (Drawing) (Revision)
2312 - A 01 201 00