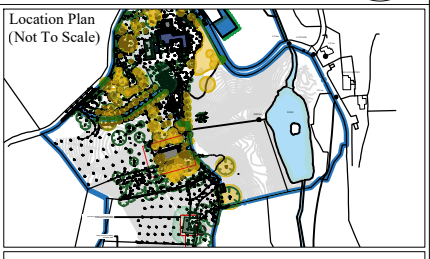




Notes
 This drawing is the copyright of Giles Quarme Architects and cannot be printed or reproduced without prior permission.
 This drawing has been based on survey information provided by others.
 All dimensions and setting out must be verified on site before commencement of the work, and any discrepancies notified to the architect.
 All windows and doors are to fit into existing openings unless stated otherwise.
 All dimensions are in millimetres unless stated otherwise.

- Survey Boundary (to be added once confirmed)
- Category A - Trees of High Quality and Value
- Category B - Trees of Moderate Quality and Value
- Category C - Trees of Low Quality and Value
- Root Protection Areas
- Tree Shading Constraints
- Tree Protection Barrier Locations
- Existing hard-surfacing within plotted RPA
- Proposed Route of GSHP
- LV/ELV Distribution



1:200 0 2 4 6 8m

PLANNING

Rev	By	Date	Description
A	MF	19/04/22	Planning submission
B	CW	15/02/24	Non-Material Amendment

Drawing Number		Rev
9796 P (0) 4002		B

Project
Frith House
 Job No. 9796

Title
Frith Modern Barn - Tree Protection Plan

Drawn CW	Checked GQ
Date April 2022	Scale 1:200 @ A3

Giles Quarme Architects
 Historic Building Architects & Consultants

7 Bishops Terrace
 London
 SE11 4UE

020 7582 0748
 www.quarme.com
 mail@quarme.com