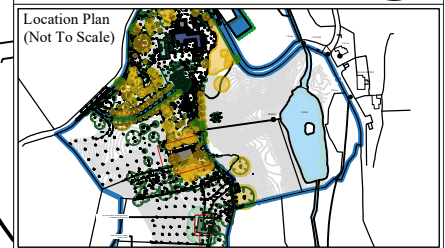
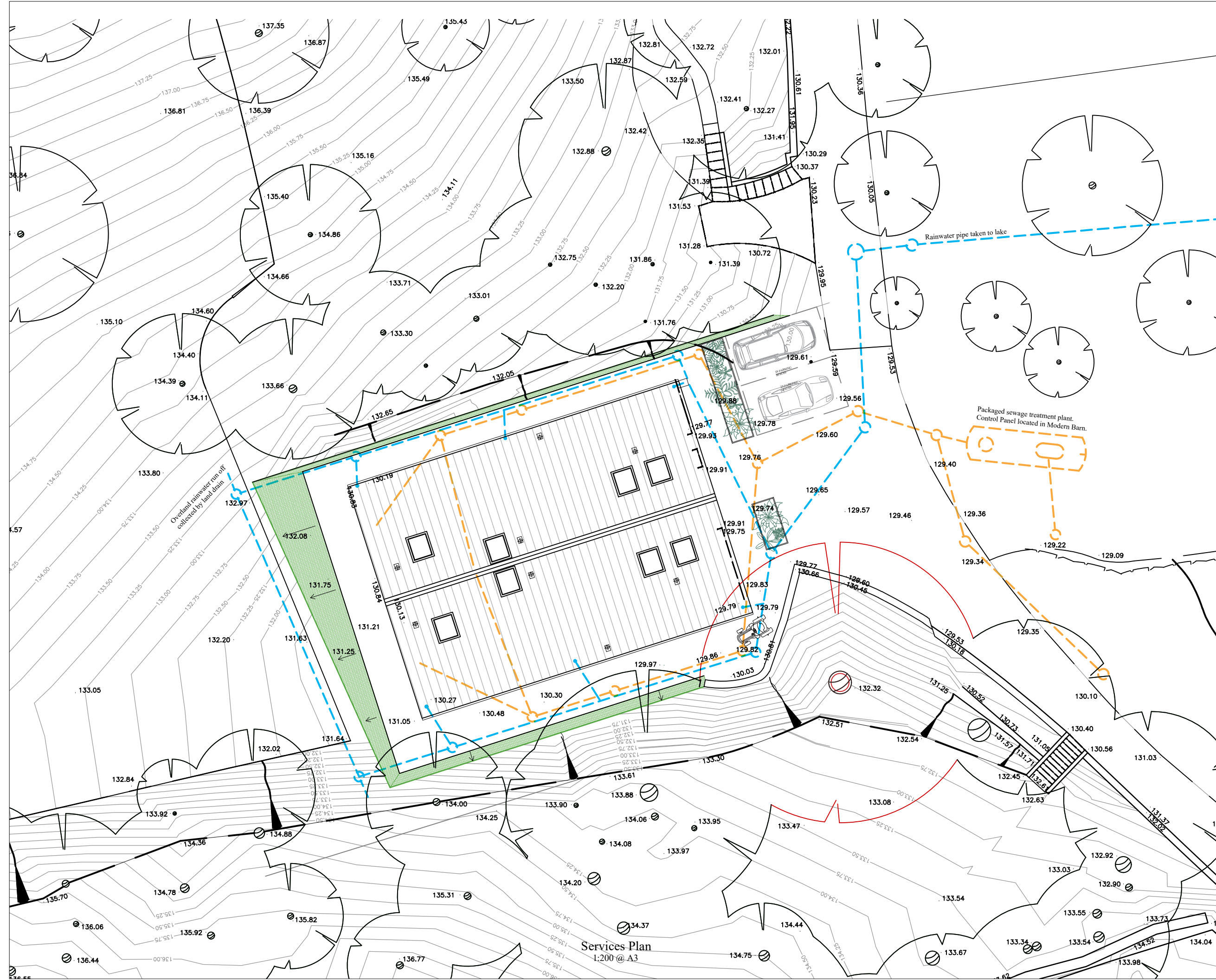
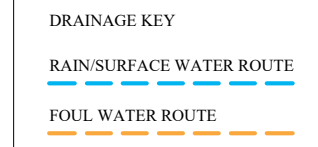


Notes
 This drawing is the copyright of Giles Quarme Architects and cannot be printed or reproduced without prior permission.
 This drawing has been based on survey information provided by others.
 All dimensions and setting out must be verified on site before commencement of the work, and any discrepancies notified to the architect.
 All windows and doors are to fit into existing openings unless stated otherwise.
 All dimensions are in millimetres unless stated otherwise.



PLANNING

| Rev | By | Date | Description |
|-----|----|----------|------------------------|
| A | MF | 19/04/22 | Planning submission |
| B | CW | 15/02/24 | Non-Material Amendment |

| | |
|-----------------|-----|
| Drawing Number | Rev |
| 9796 P (0) 4003 | B |

Project
Frith House
 Job No. 9796

Title
Frith Modern Barn - Proposed Services Route

| | |
|-----------------|------------------|
| Drawn MF | Checked GQ |
| Date April 2022 | Scale 1:200 @ A3 |

Giles Quarme Architects
 Historic Building Architects & Consultants
 7 Bishops Terrace London SE11 4UE
 020 7582 0748
 www.quarme.com
 mail@quarme.com

Services Plan
 1:200 @ A3