

Label	CalcType	Units	Avg	Max	Min	Min/Avg	Min/Max
House 1_Cd_Seg1	Obrusive - Cd	N.A.	228.13	482	54	0.24	0.11
House 1_III_Seg1	Obrusive - III	Lux	0.00	0	0	N.A.	N.A.
House 2_Cd_Seg1	Obrusive - Cd	N.A.	66.25	178	9	0.14	0.05
House 2_III_Seg1	Obrusive - III	Lux	0.00	0	0	N.A.	N.A.
House 3_Cd_Seg1	Obrusive - Cd	N.A.	26.83	45	12	0.45	0.27
House 3_III_Seg1	Obrusive - III	Lux	0.00	0	0	N.A.	N.A.
House 4_Cd_Seg1	Obrusive - Cd	N.A.	32.92	52	15	0.46	0.29
House 4_III_Seg1	Obrusive - III	Lux	0.00	0	0	N.A.	N.A.

Label	CalcType	Units	Avg	Max	Min	Min/Avg	Min/Max
Muga	Illuminance	Lux	209.50	341	125	0.60	0.37
Path	Illuminance	Lux	21.06	48	5	0.24	0.10

Symbol	Qty	Label	Arrangement	Description
⊗	4	A	SINGLE	1 x 450w Amnis Flood with WST Optic Mounted @ 8m
⊙	3	C	SINGLE	1 x 15w LED Viva City Pro 4000k 320mA with AY70 Optic @ 3m
⊚	2	B	SINGLE	1 x 450w LED 2700k Amnis Match Flood with NST Optic @ 8m

Notes :-
DO NOT SCALE FROM THIS DRAWING
ANY DISCREPANCIES TO BE REPORTED TO THE CONTRACT ADMINISTRATOR
CONTRACTOR TO CHECK DIMENSIONS ON SITE
DRAWINGS ISSUED WITHOUT STATUS ARE DRAFT ONLY

Obrusive Light - Compliance Report
CIE 150:2017, E3-Medium District Brightness, Pre-Curfew
Filename: NP11 SLH
29/07/2022 15:58:37

Illuminance
Maximum Allowable Value: 10 Lux

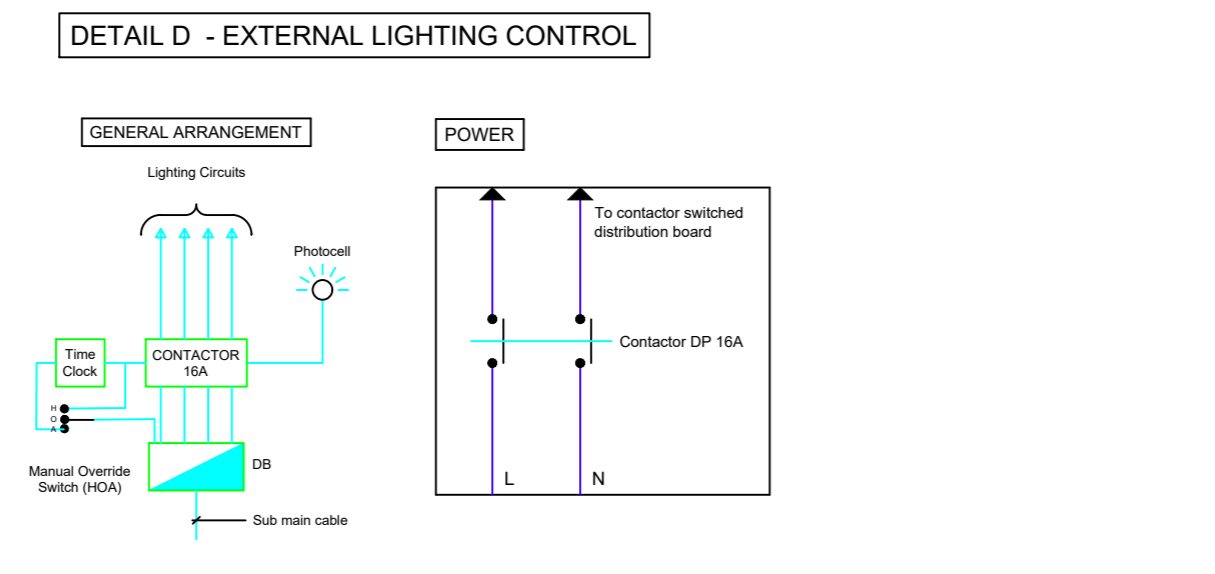
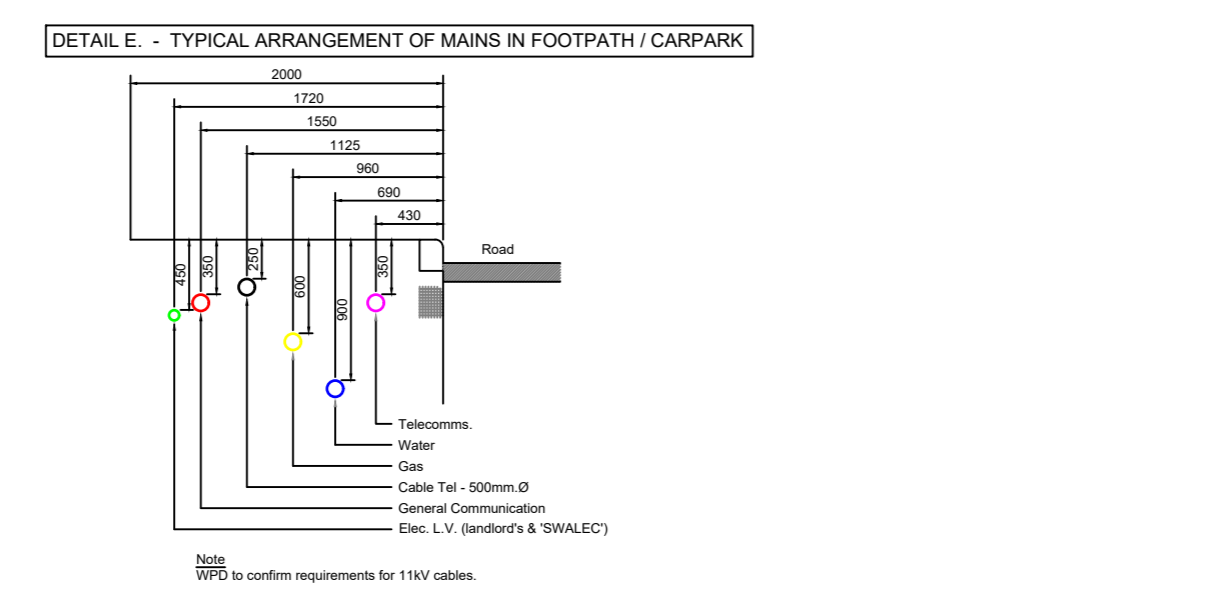
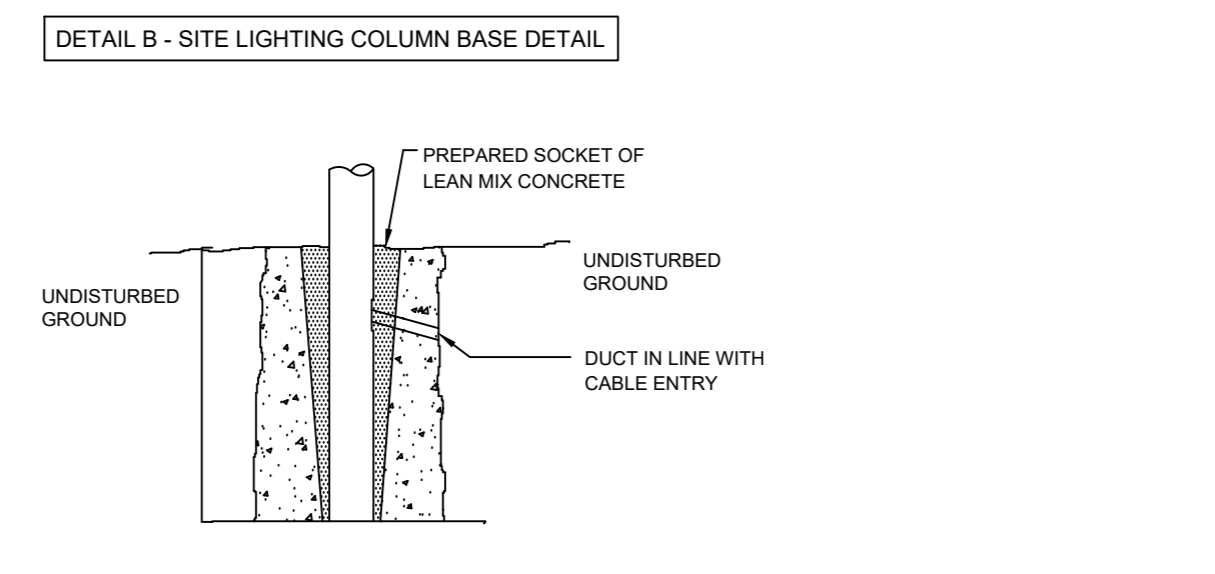
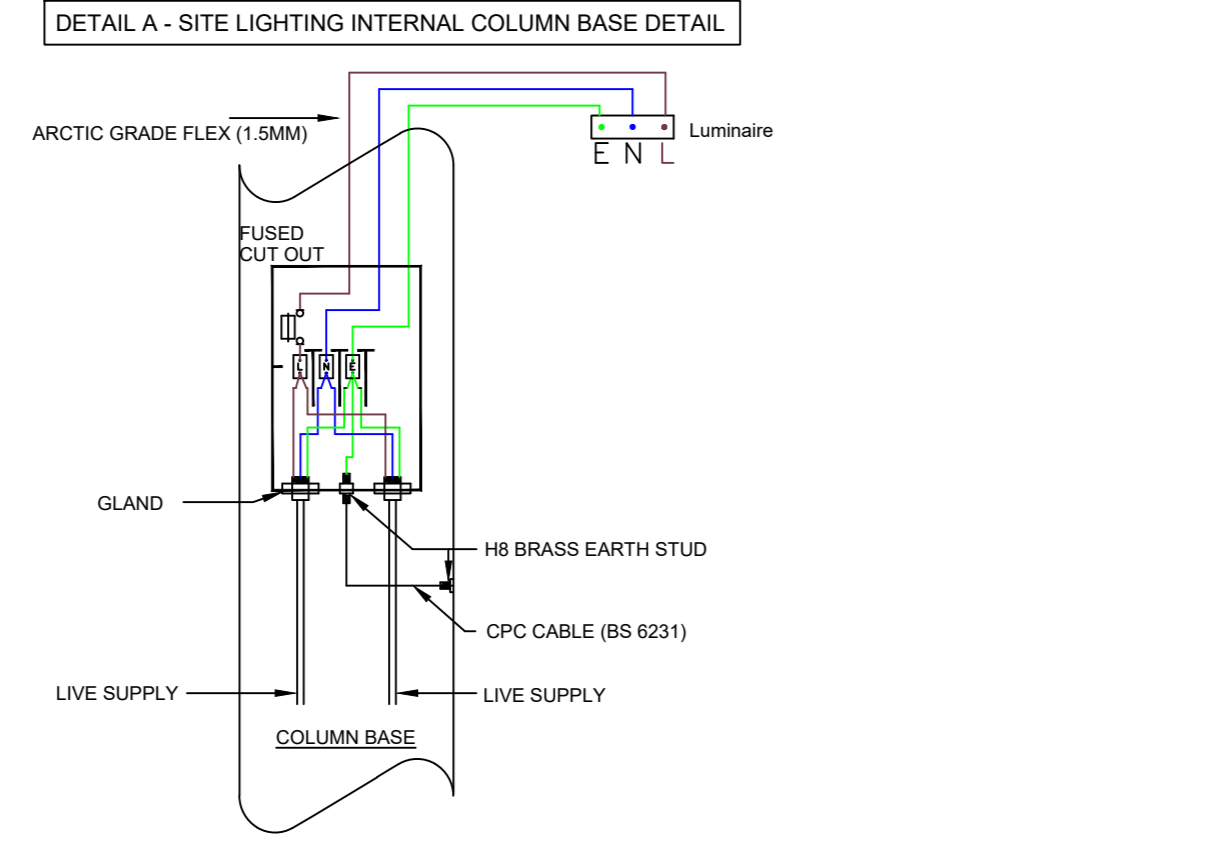
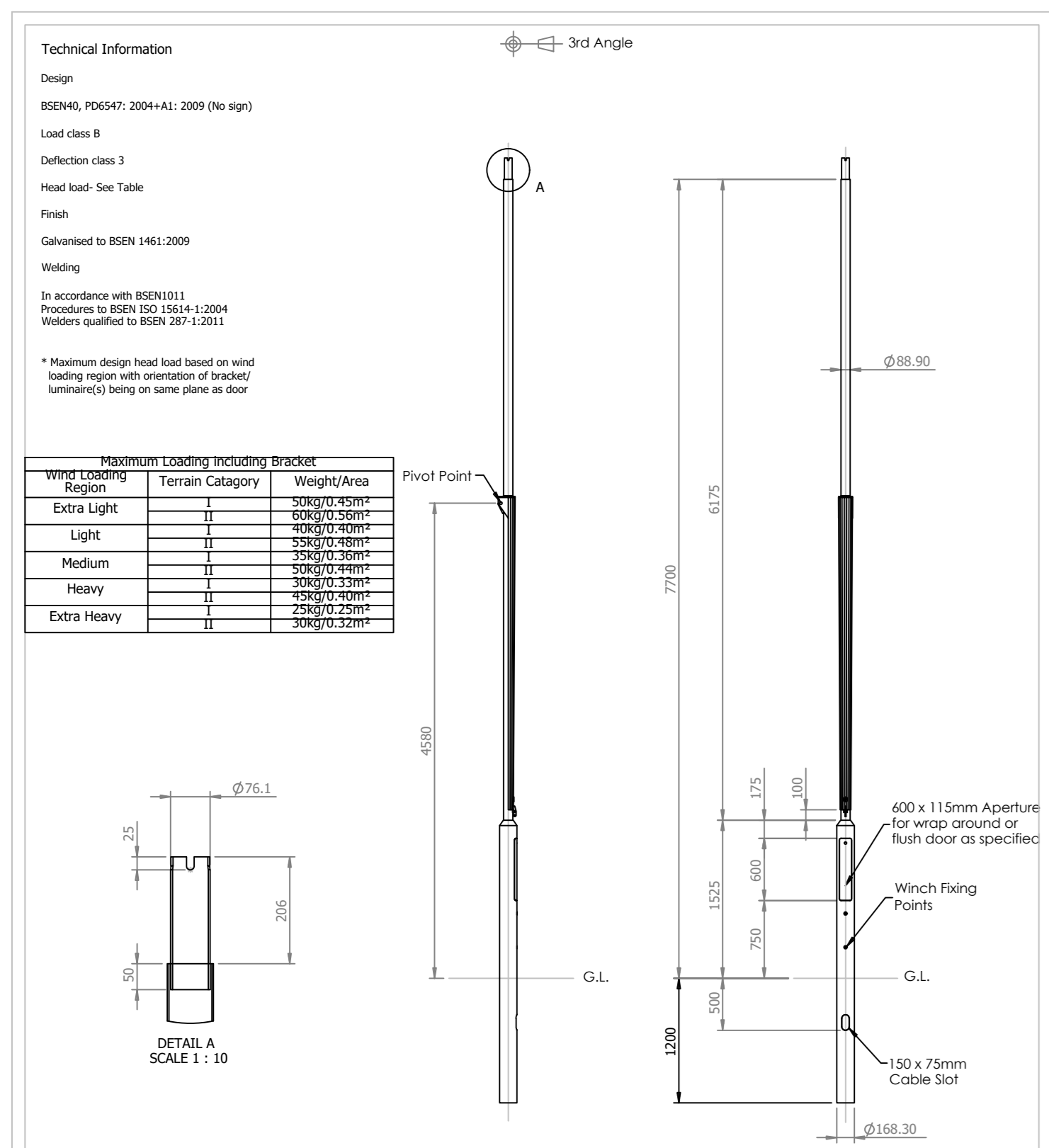
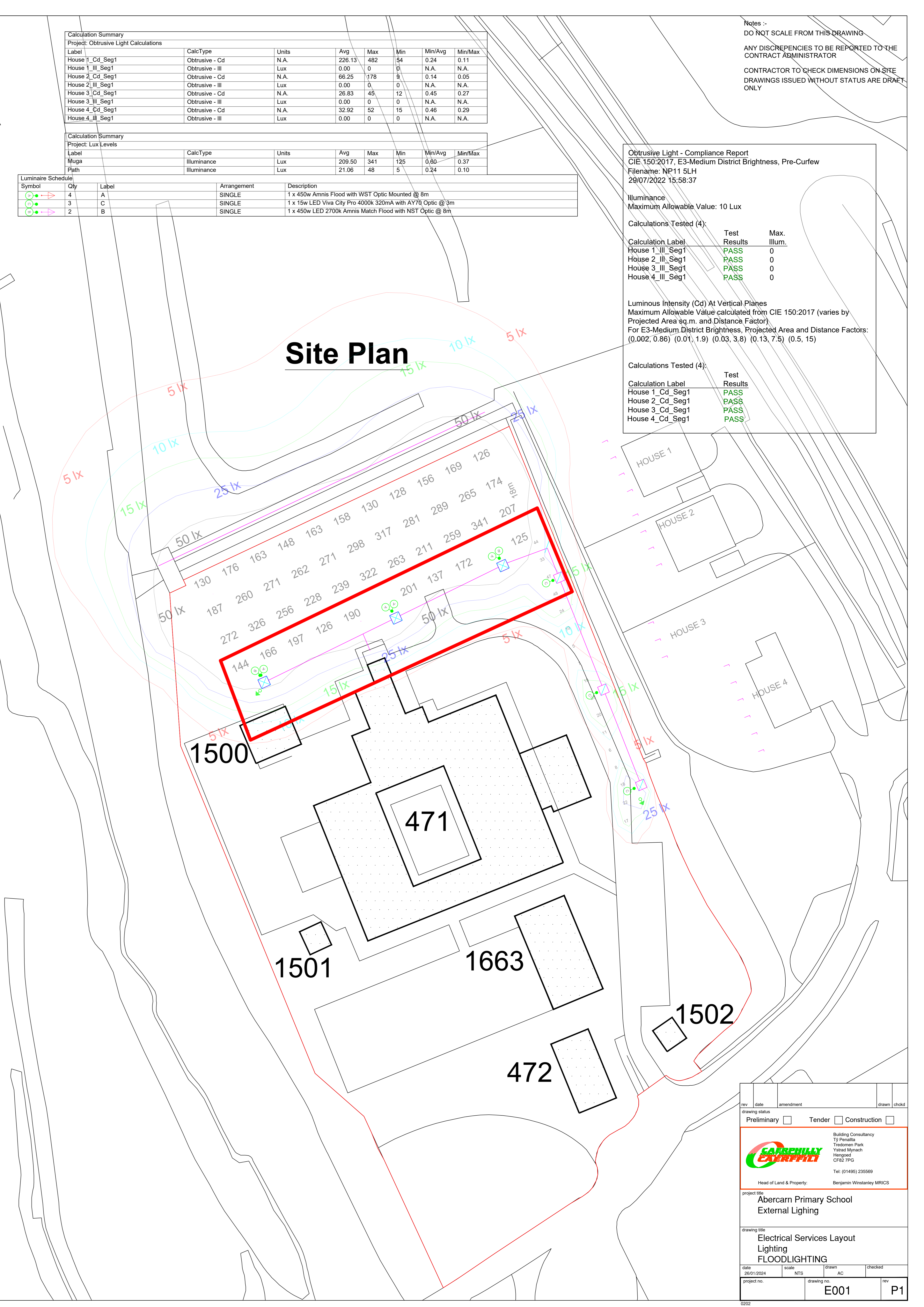
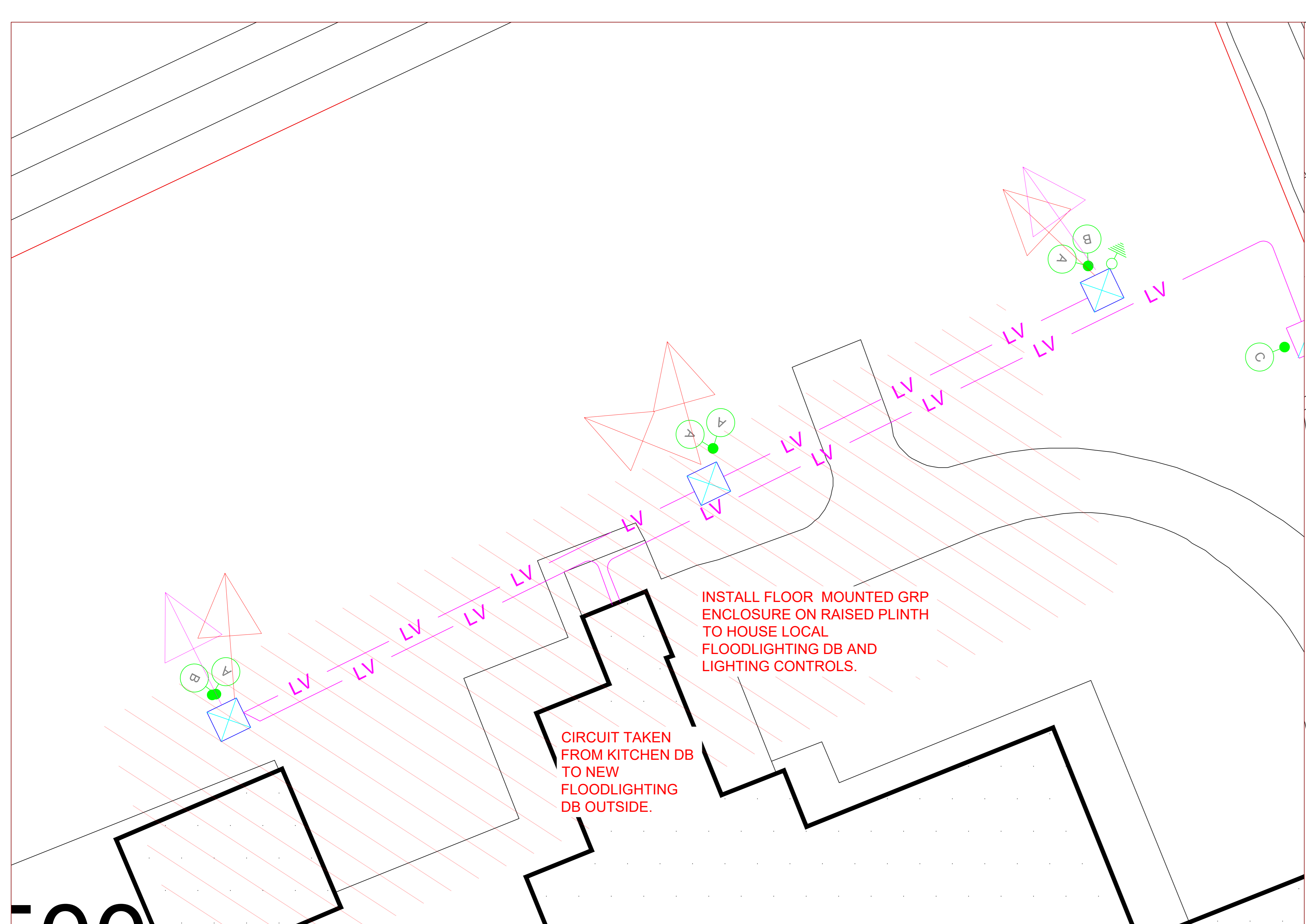
Calculations Tested (4):

Calculation Label	Test Results	Max. Illum.
House 1_III_Seg1	PASS	0
House 2_III_Seg1	PASS	0
House 3_III_Seg1	PASS	0
House 4_III_Seg1	PASS	0

Luminous Intensity (Cd) At Vertical Planes
Maximum Allowable Value calculated from CIE 150:2017 (varies by Projected Area sq.m. and Distance Factor)
For E3-Medium District Brightness, Projected Area and Distance Factors: (0.002, 0.86) (0.01, 1.9) (0.03, 3.8) (0.13, 7.5) (0.5, 15)

Calculations Tested (4):

Calculation Label	Test Results
House 1_Cd_Seg1	PASS
House 2_Cd_Seg1	PASS
House 3_Cd_Seg1	PASS
House 4_Cd_Seg1	PASS



- Legend**
- ⊗ LIGHT FITTING - SEE LIGHTING SCHEDULE
 - CABLE ROUTE - BURIED / DUCTED AS PER SPECIFICATION.
 - ⊗ 8m Lighting Column (Wind down)
 - ⊙ 3m Lighting Column
 - ⊚ End of line Earth Rod
 - ▨ Caution - Existing Underground Services

Notes
All Works on this drawings must comply with the relevant CLAW Specifications.

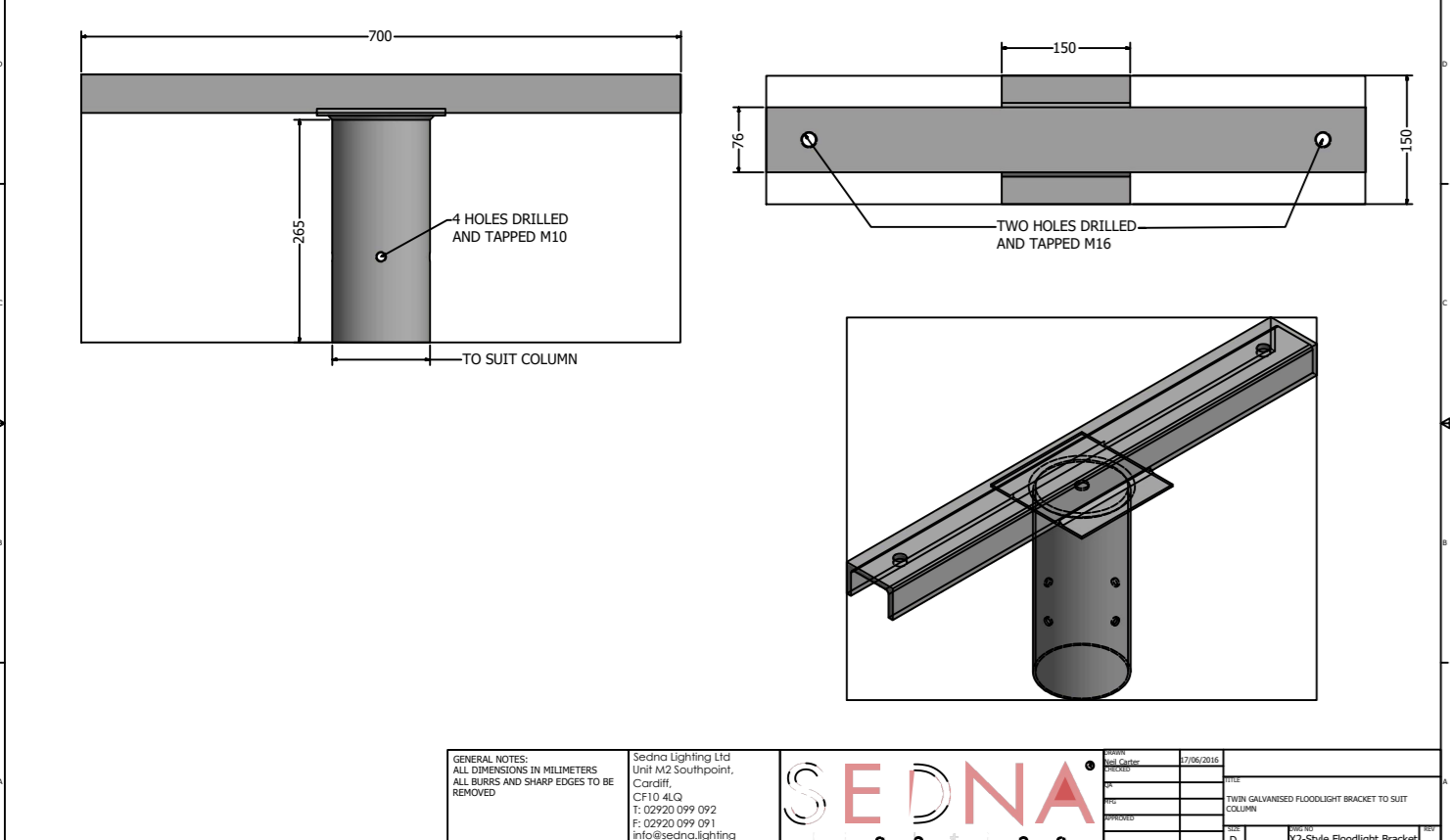
SEDNA LIGHTING

Revisions:
1. Issued for Tender - 27/11/22

Title:
8m Tubular Mid Hinged Rods & Lower Column

Scale: 1:50
Sheet 1 of 8

Drawn By: MJB
Ref: 8M-8MWH
Contract:
Customer:
Date: 27/11/2023



rev | date | amendment | draw | checked

drawing status: Preliminary Tender Construction

CARPHILL Building Consultancy
17 Penarth
Tredomen Park
Ystrad Mynach
Hengoed
CF82 7PG
Tel: 01495 235569
Benjamin Winstanley MRICS

Head of Land & Property:
Benjamin Winstanley MRICS

project title:
Abercarn Primary School External Lighting

drawing title:
Electrical Services Layout Lighting FLOODLIGHTING

date: 20/01/2024 | scale: NTS | drawing no: AC | checked: | project no: | rev: P1

E001 P1