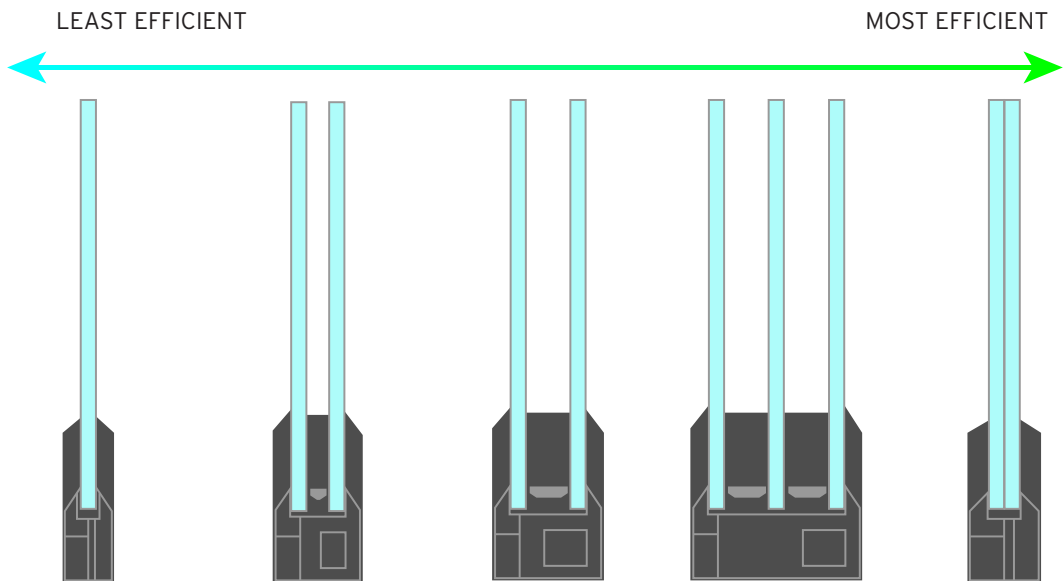




## Compare Heritage Eco Glass with Traditional Glazing



	Single Glazing	Slim Double Glazing	Double-Glazing	Triple Glazing	Heritage Eco Glass
Thickness	4mm	11mm	28mm	36mm	6.7mm
U-Value (W/m <sup>2</sup> K)	5.8	1.9	1.2	0.8	0.7
Light Transmission	90	80	80	71	80
Sound Reduction Rw (C;Ctr) dB	29 (-2; -3)	31 (-2; -5)	31 (-2; -5)	32 (-1; -5)	35 (-2;-5)

Heritage Eco Glass combines best in class performance with appealing aesthetics. Its slim profile means it can integrate seamlessly into existing frames or into new windows and curtain walls.

Unlike previous vacuum glazing technologies, our unique product has no evacuation port to obstruct the view and has very thin edge seals, ensuring maximum vision area.

We deliver the most advanced vacuum insulating glazing technology yet, optimising indoor comfort by outperforming conventional insulating glazing.

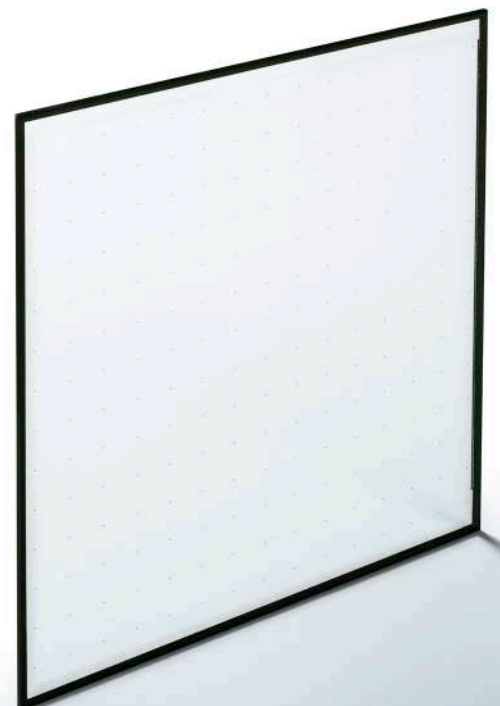
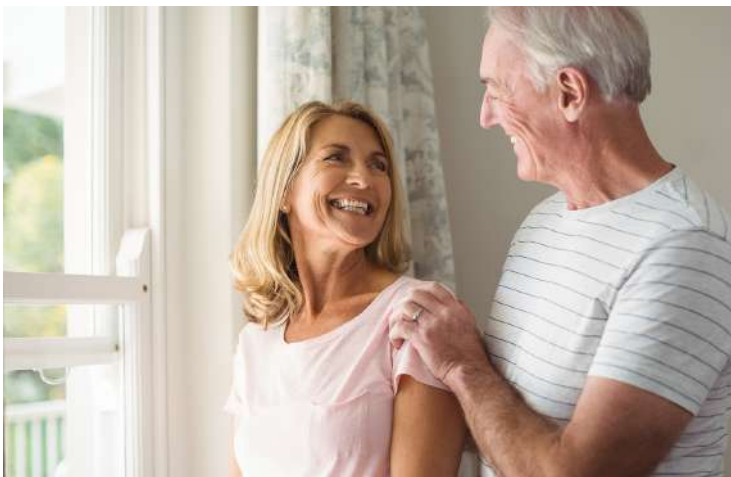
### Summary:

- 8 Times more efficient than single glazing and 12.5% more efficient than a 36mm triple-glazed unit.
- Slightly better light transmission than double-glazing and better light transmission than triple glazing.
- 34% perceived noise reduction compared to single glazing and 18% better than double and triple glazing.
- Better solar gain when compared to triple glazing and just slightly less effective than double glazing.
- Manufactured in Belgium.

#### What's so special about it?

#### What does this mean for you?

SLIM, AESTHETICAL DESIGN	<ul style="list-style-type: none"> <li>• a 'light' appearance similar as monolithic glass no vacuum evacuation port</li> <li>• suitable for retrofitting(*) of existing windows</li> </ul>
OUTSTANDING THERMAL INSULATION	<ul style="list-style-type: none"> <li>• U-value of 0.7 W/(m .K)</li> <li>• regardless of inclination (i.e. sloped or roof glazing)</li> </ul>
DURABLE INVESTMENT	<ul style="list-style-type: none"> <li>• designed performance for several decades</li> </ul>
MORE NATURAL DAYLIGHT	<ul style="list-style-type: none"> <li>• delivering increased indoor light comfort</li> </ul>
HARNESSING MORE FREE SOLAR ENERGY	<ul style="list-style-type: none"> <li>• lower energy consumption</li> <li>• lower emissions</li> </ul>
INCREASED ACOUSTIC ATTENUATION PERFORMANCE	<ul style="list-style-type: none"> <li>• offer increased acoustic indoor comfort</li> <li>• performance in the lower frequency spectrum for traffic noise</li> </ul>
LEAD FREE AND RECYCLEABLE	<ul style="list-style-type: none"> <li>• 100% recyclable</li> <li>• embraces the circular economy</li> </ul>



(\*) retrofitting: replace the existing glass with a Fineo glazing, fully preserving the initial window frame provided the window frame is in a properly functioning state.

# Turn Your Glass Into Radiators

## With New Heritage **Eco** Glass

### Ultra Slim Vacuum Glazing

Ultra slim Heritage **Eco** Glass has a thermal insulation value of  $0.7 \text{ W}/(\text{m}^2 \cdot \text{K})$ , which is equivalent to triple glazing, and up to 8 times better than single glazing.

Retrofitting Heritage **Eco** Glass into your existing timber frame windows will transform them into invisible radiators by keeping heat in

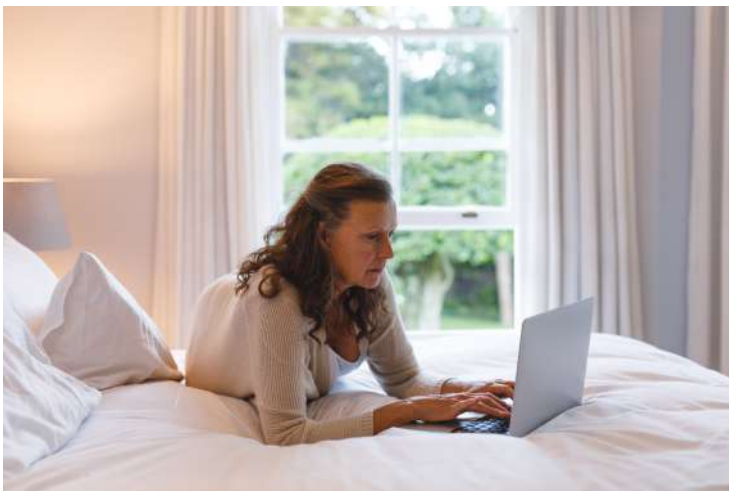
and cold out, no matter what the temperature is outside.

Heritage **Eco** Glass will retain the original aesthetic of your home for years to come.



	U-Value	Internal Pane Temperature	Internal Pane Temperature	Internal Pane Temperature
Single Glazing	5.8	-2.75°C	1°C	4.8°C
Heritage Eco Glass	0.7	17.3°C	17.7°C	18.15°C

Outside -10°C      Outside -5°C      Outside 0°C  
 ┌ Internal Room Temperature 20°C ─┐



## Compare Heritage Eco Glass With Other Slim Double-Glazing

	Overall Thickness	Glass Thickness	Cavity	Gas	U-Value	Guarantee	Heritage Eco Glass
Heritage Eco Glass Vacuum Glazing	6.7mm	3mm	0.1mm	NONE	0.7	15 Yrs	Efficiency Improvement
Other Slim Double-Glazing	11mm	3mm	4mm	Krypton	1.9	5 Yrs	63%
	12mm	4mm	4mm	Krypton	1.9	5 Yrs	63%
	13mm	4 mm	5mm	Krypton	1.7	5 Yrs	59%
	14mm	4mm	6mm	Kyrpton	1.5	5 Yrs	53%
	16mm	4mm	8mm	Krypton	1.3	5 Yrs	46%



Heritage Eco Glass keeps older properties warmer and quieter, whilst maintaining the original aesthetic of the period property.

Heritage Eco Glass can be retrofitted into any timber framed window, transforming them with unobstructed views, as there is no visible vacuum cap.

### Contact:

Benn Dawes

BESPOKE windows by RKM

Mobile 01738 479541

Office 01738 479541

Email [enquiries@bespoke-by-rkm.co.uk](mailto:enquiries@bespoke-by-rkm.co.uk)

[www.bespokebyrkm.co.uk](http://www.bespokebyrkm.co.uk)



BESPOKE windows by RKM