

DOWEN FARMER ARCHITECTS

Unit 601, Level 6,
Peckham Levels,
95A Rye Ln,
London
SE15 4ST

T: 020 8058 7997
W: www.dowenfarmer.com

Project
East End Road

Project address
250 East End Road

Client
Manak Homes

Sheet number
1141-DFA-00012

Sheet name
North Elevation

Sheet scale
As indicated
@ A1

Date/time
16/02/2024 09:25:25

Rev	Description	Date	Issued	Checked
1	Ref. No: 23/3838/NMA	06.09.23	CB	SM
2	NMA 02	16.10.23	CB	SM
3	NMA Revision	23.01.24	CB	LJ
4	Section 73	16.02.24	CB	LJ

REVISIONS KEY

- Roof-lights added within the pitched roof at Level 03 to create better quality residential accommodation.
- Privacy screening added to separate external amenity areas between units.
- Layout of residential accommodation revised to improve quality of the space.
- Terraces (level 03) revised and area increased to improve layouts and facilitate drainage.
- Position of approved Light well in the Green Roof revised and 2 new Light wells added to improve the daylighting to the bedrooms below.
- Roof Shape Revised to create better quality accommodation.
- Lift overrun added.
- Smoke shaft overrun added.
- Balcony position amended to serve living room instead of bedroom.
- Addition of 2 new windows on the South-East Facade.
- General window amendments - Variation in size
- Edge Protection to ADV added

Project status

Section 73

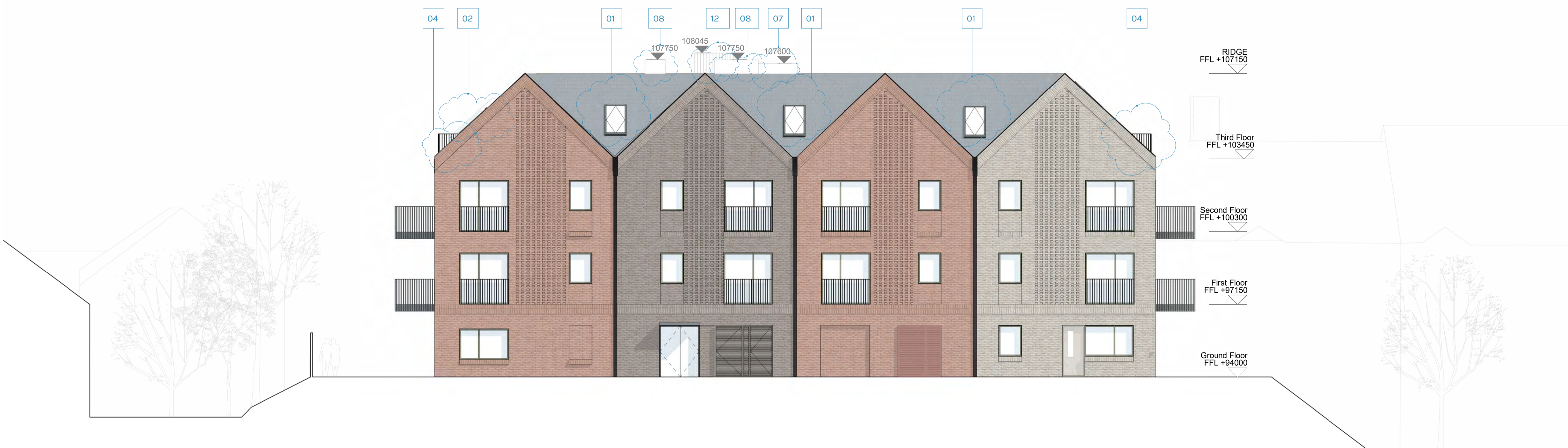
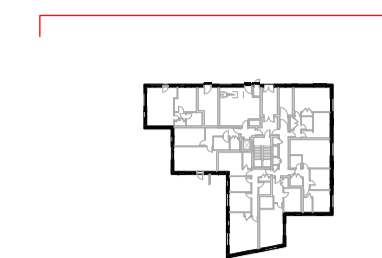
GENERAL NOTES:

This drawing is not for construction and is for information purposes only. Contractor to provide detailed design and construction information. This drawing is to be read in conjunction with all relevant architects' and engineers' drawings and specifications. Drawings to be read in line with the approved inspectors plan check and all dimensions to be checked on site with any discrepancies reported to the architect.

OS information no accurate and not to be used for measurements.

Downen Farmer Architects Ltd is incorporated in England & Wales. Company registration number 10861309.

* OBSCURED WINDOW



1 | North Elevation
1:100

