

DEFA

EAST END ROAD SECTION 73 DOC

1.0

INTRODUCTION

1.0 INTRODUCTION

EXECUTIVE SUMMARY

This document has been prepared by Downen Farmer Architects on behalf of Manak Homes to support a Section 73 Application for the proposed development at Land Rear Of The Bobath Centre, 250 East End Road, London, N2 8AU.

The rationale of the document is to detail and explain the minor amendments proposed to the scheme, as approved by applications 21/2602/FUL and 23/3838/NMA.

The amendments made to the previously approved application have been undertaken in order to rationalise and improve the interior layouts of the third floor units by adding roof-lights within the pitched roof and to increase the size of the private amenity terraces on level 03.

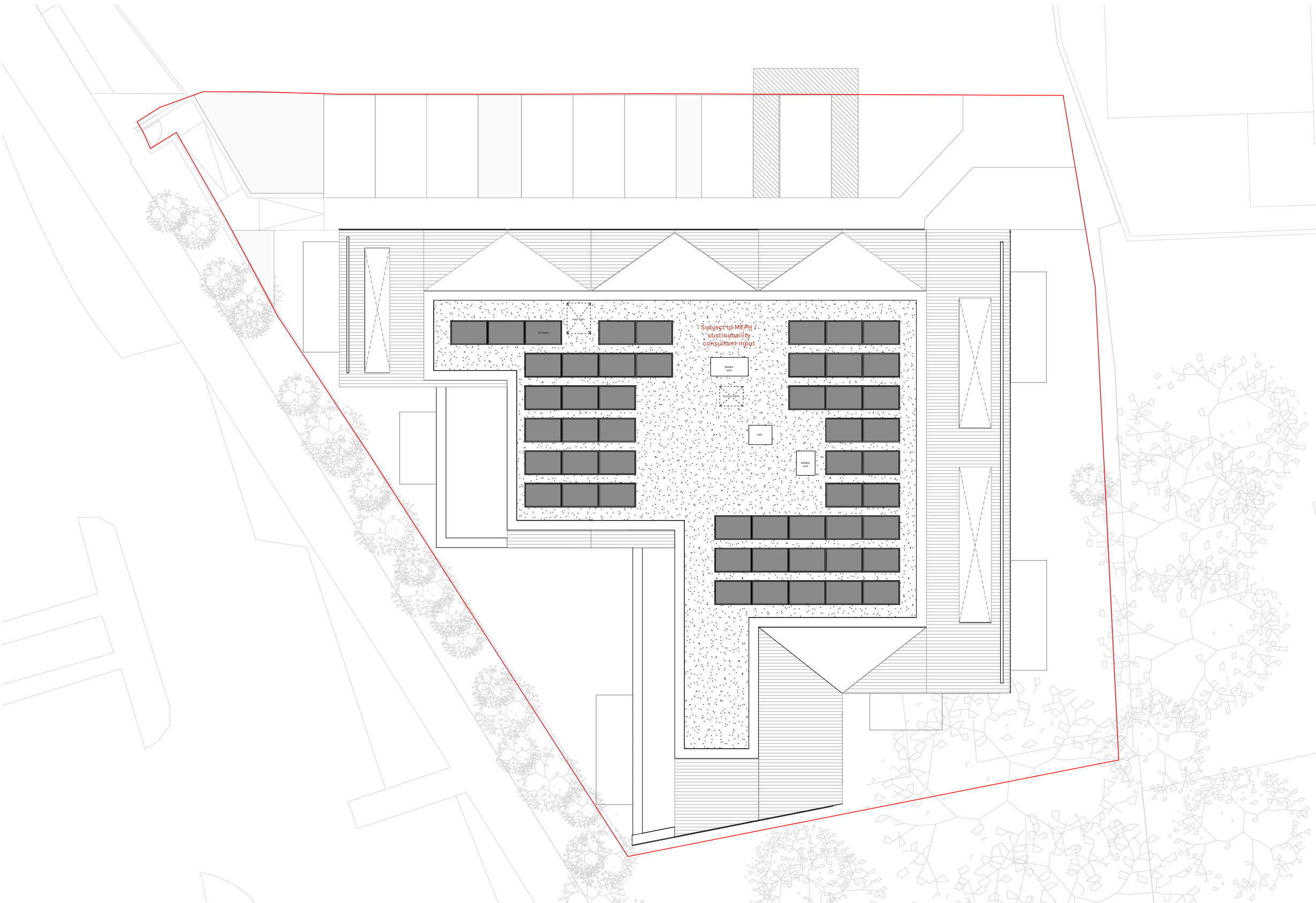


2.0

**LAYOUT
AMENDMENTS**

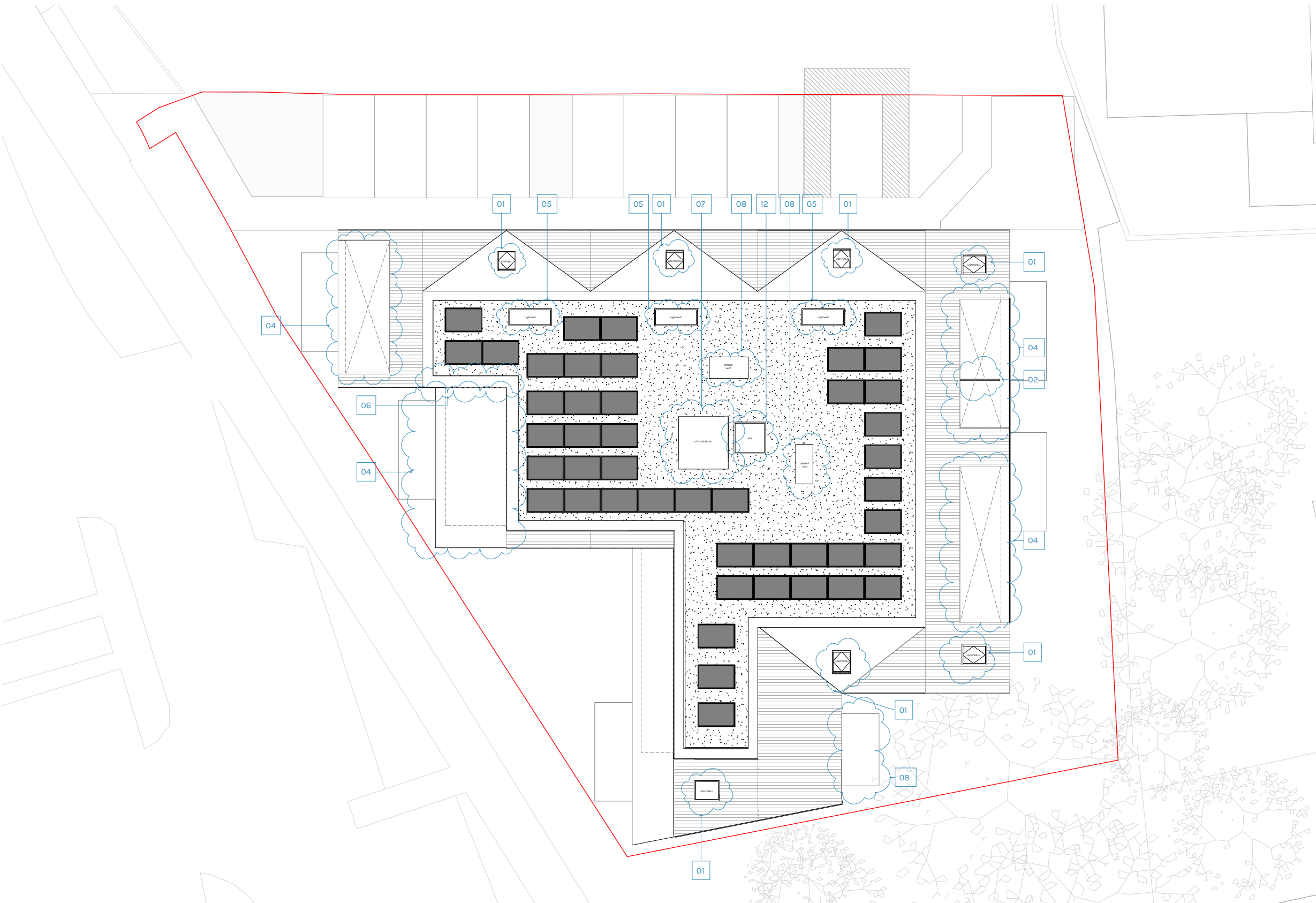
LAYOUTS AMENDMENTS

ROOF - 23/3838/NMA



LAYOUTS AMENDMENTS

ROOF - PROPOSED

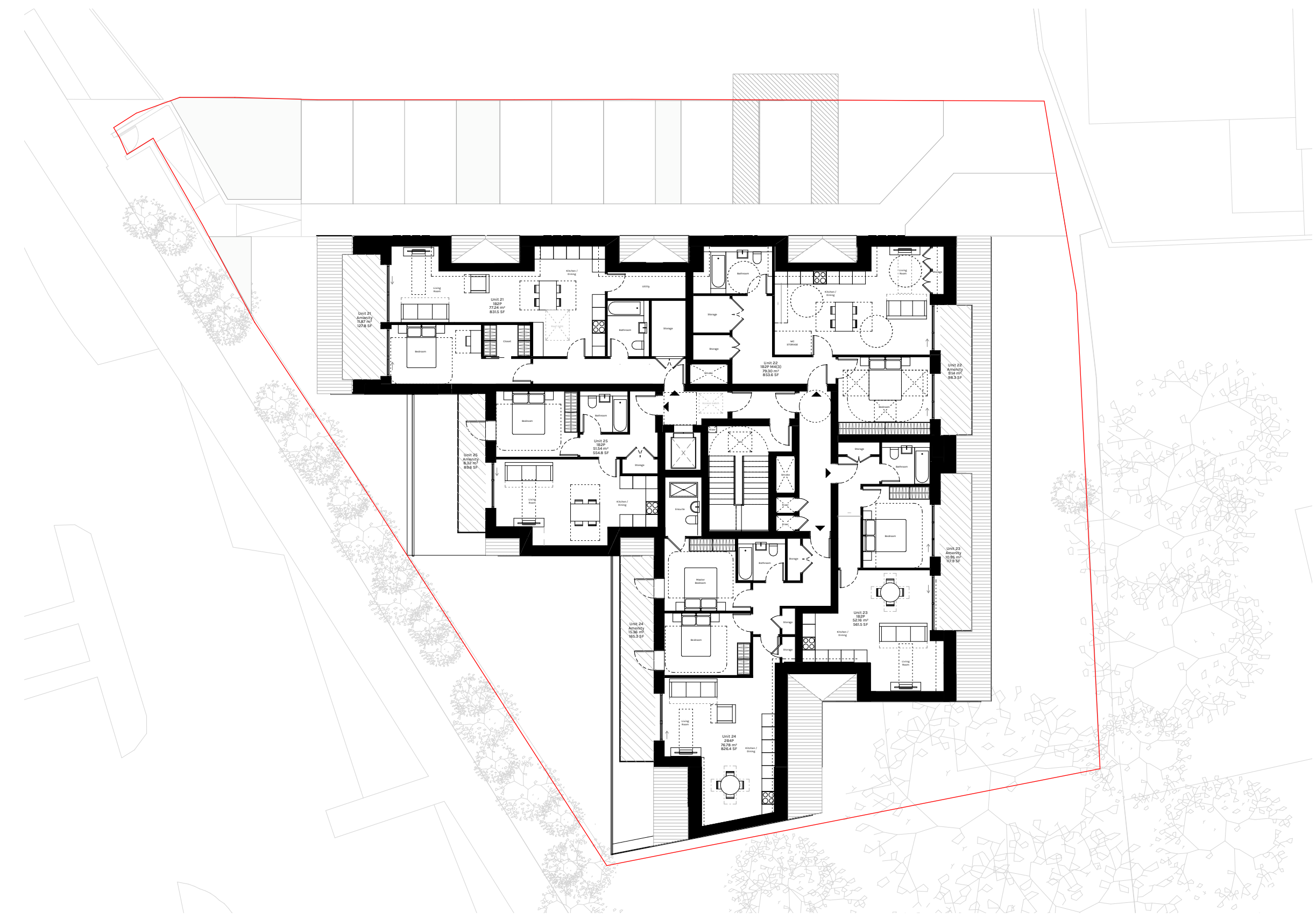


REVISIONS KEY

- 01 Roof-lights added within the pitched roof at Level 03 to create better quality residential accommodation.
- 02 Privacy screening added to separate external amenity areas between units.
- 03 Layout of residential accommodation revised to improve quality of the space.
- 04 Terraces (level 03) revised and area increased to improve layouts and facilitate drainage.
- 05 Position of approved Light well in the Green Roof revised and 2 new Light wells added to improve the daylighting to the bedrooms below.
- 06 Roof Shape Revised to create better quality accommodation.
- 07 Lift overrun added.
- 08 Smoke shaft overrun added.
- 09 Balcony position amended to serve living room instead of bedroom.
- 10 Addition of 2 new windows on the South-East Facade.
- 11 General window amendments - Variation in size
- 12 Edge Protection to AOV added

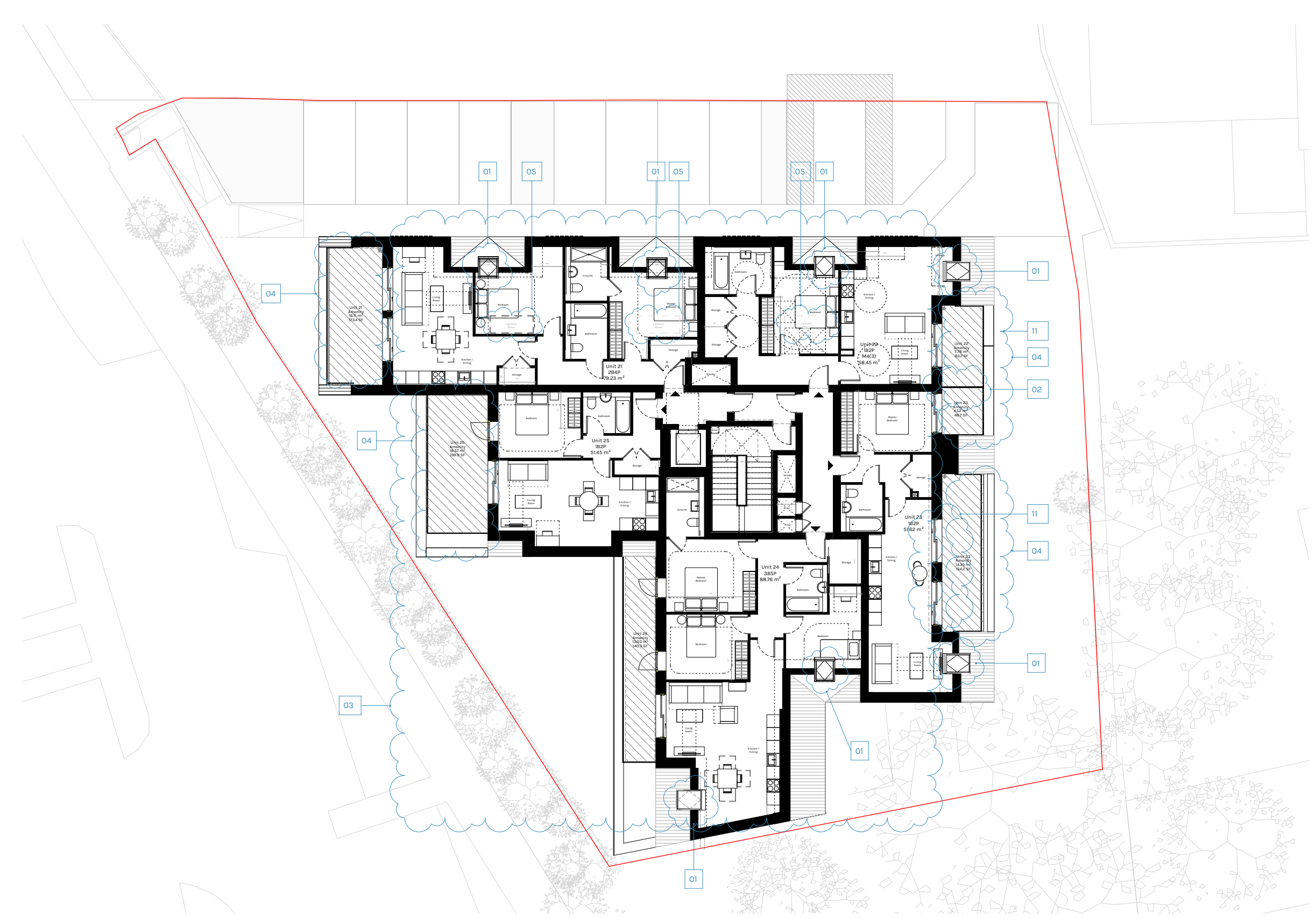
LAYOUTS AMENDMENTS

THIRD FLOOR - 23/3838/NMA



LAYOUTS AMENDMENTS

THIRD FLOOR - PROPOSED



- REVISIONS KEY**
- 01 Roof-lights added within the pitched roof at Level 03 to create better quality residential accommodation.
 - 02 Privacy screening added to separate external amenity areas between units.
 - 03 Layout of residential accommodation revised to improve quality of the space.
 - 04 Terraces (level 03) revised and area increased to improve layouts and facilitate drainage.
 - 05 Position of approved Light well in the Green Roof revised and 2 new Light wells added to improve the daylighting to the bedrooms below.
 - 06 Roof Shape Revised to create better quality accommodation.
 - 07 Lift overrun added.
 - 08 Smoke shaft overrun added.
 - 09 Balcony position amended to serve living room instead of bedroom.
 - 10 Addition of 2 new windows on the South-East Facade.
 - 11 General window amendments - Variation in size
 - 12 Edge Protection to AOV added

