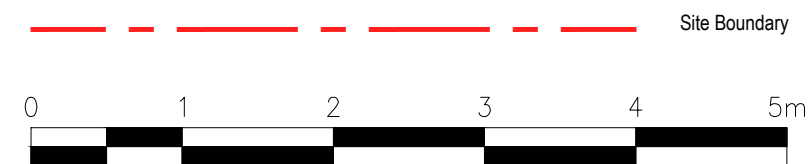
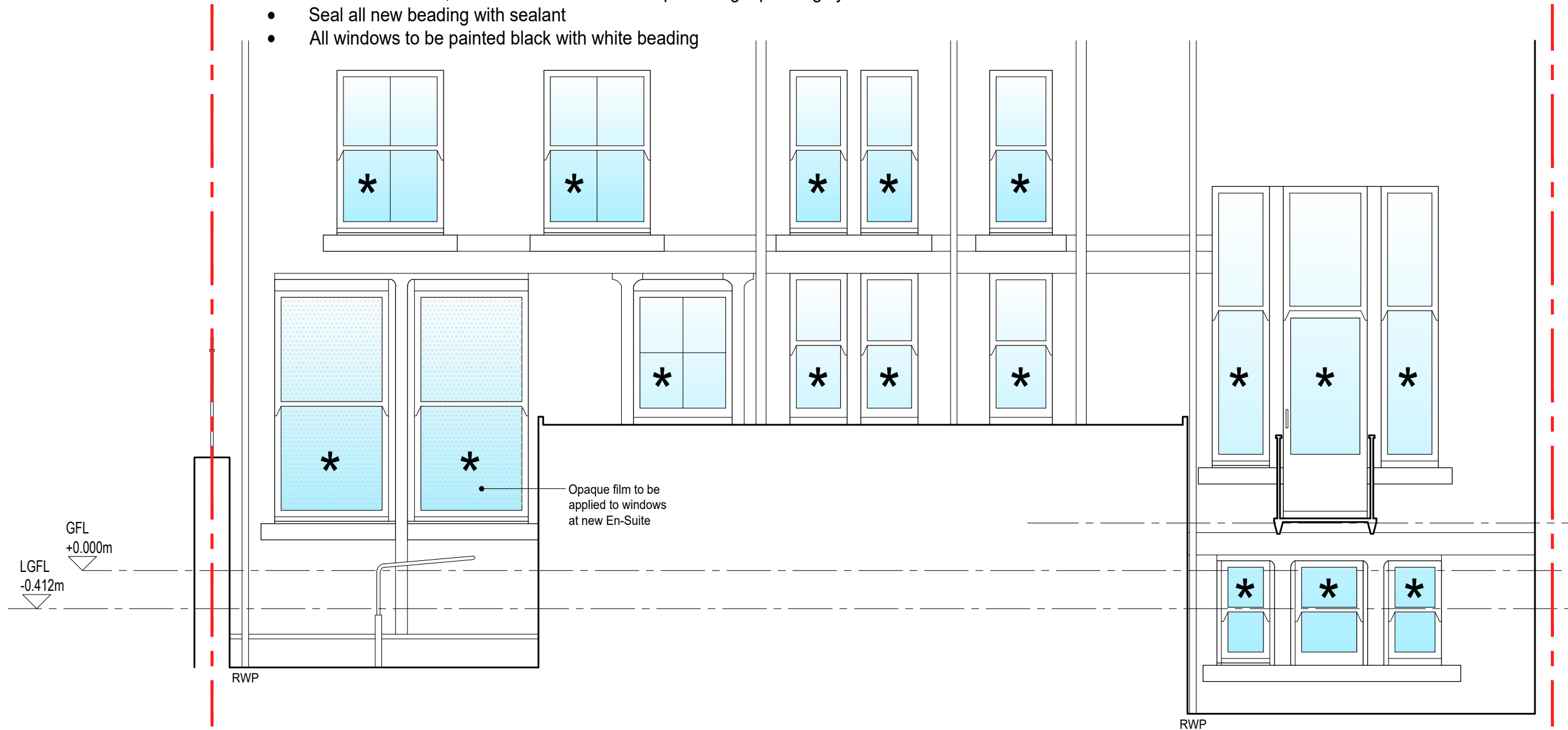


COMPLETE OVERHAUL REFURBISHMENT SPECIFICATION

Do not scale. Use figured dimensions only. Any discrepancies to be reported to the Architect.

rev	description	date	drawn

- *
 - Remove existing staff bead
 - Remove lower sash
 - Remove parting bead
 - Remove upper sash
 - Balance windows
 - Re-cord windows with Reddiseal nylon sash cords
 - Hang top sash
 - Fit new parting bead, fitted with Reddiseal brush pile draught proofing system
 - Cut an 8mm rebate out of the meeting rail of the lower sash and fit the Reddiseal brush pile draught proofing system
 - Hang lower sash
 - Fit new staff bead, fitted with Reddiseal brush pile draught proofing system
 - Seal all new beading with sealant
 - All windows to be painted black with white beading



planning	status	job number	drawing	rev.
	.	.	321	.
project Alterations to, 10 Crown Terrace, Glasgow, G12 9EZ	scale	date	drawn	ic
	1:50 @ A3	20.01.24	ic	ic
title Rear Elevation as Proposed				
client Mr & Mrs McCann				