

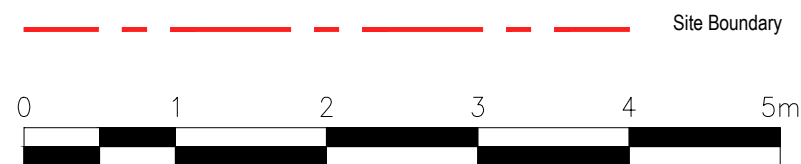
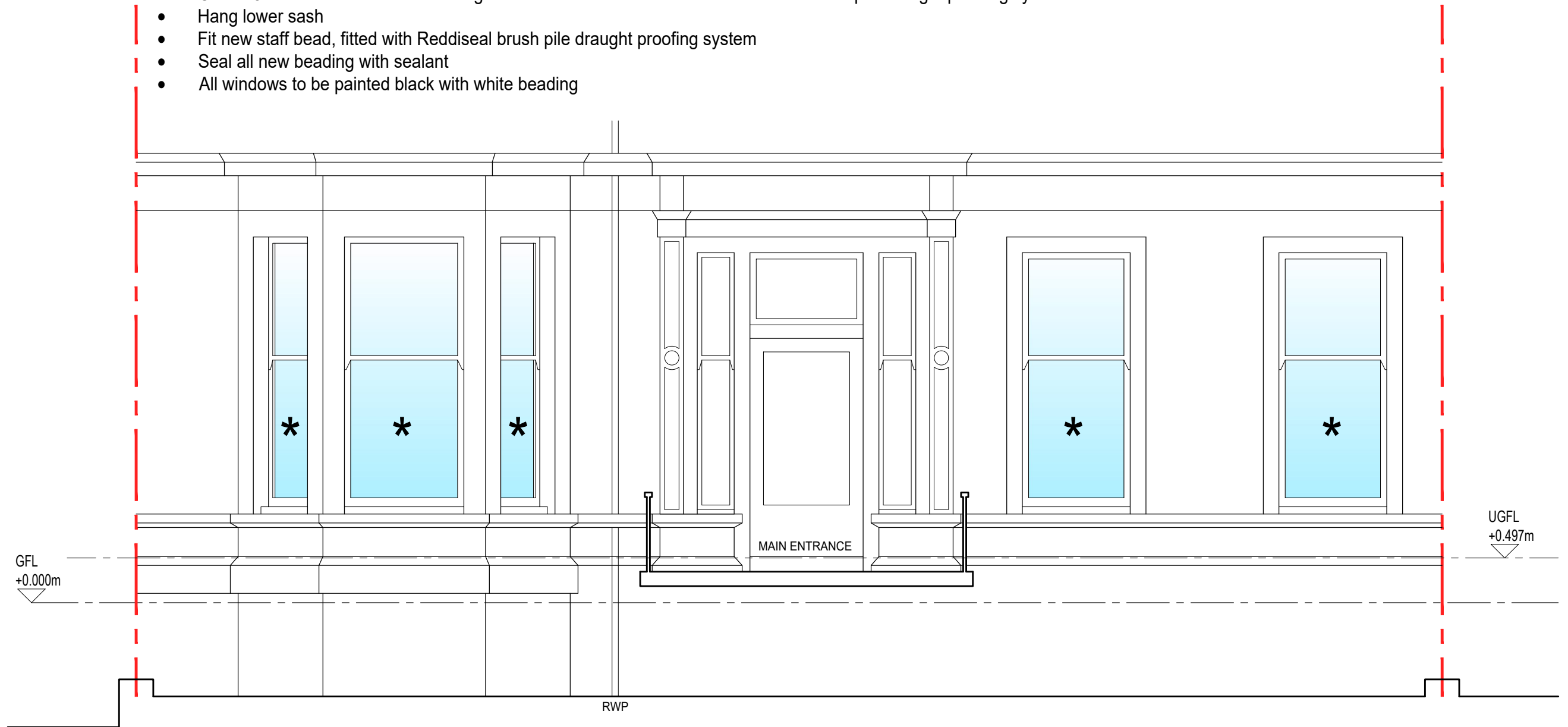
Do not scale. Use figured dimensions only. Any discrepancies to be reported to the Architect.

COMPLETE OVERHAUL REFURBISHMENT SPECIFICATION

*

- Remove existing staff bead
- Remove lower sash
- Remove parting bead
- Remove upper sash
- Balance windows
- Re-cord windows with Reddiseal nylon sash cords
- Hang top sash
- Fit new parting bead, fitted with Reddiseal brush pile draught proofing system
- Cut an 8mm rebate out of the meeting rail of the lower sash and fit the Reddiseal brush pile draught proofing system
- Hang lower sash
- Fit new staff bead, fitted with Reddiseal brush pile draught proofing system
- Seal all new beading with sealant
- All windows to be painted black with white beading

rev	description	date	drawn
.	.	.	.



status	job number	drawing	rev.
planning	.	320	.
project	scale	date	drawn
Alterations to, 10 Crown Terrace, Glasgow, G12 9EZ	1:50 @ A3	20.01.24	ic
title			
Front Elevation as Proposed			
client			
Mr & Mrs McCann			