

3mm THK ALUMINIUM BRACKET, VERTICALLY SLOTTED, FIXED TO SFS WITH 2no EJOT JT3-3-6.3x38 SCREWS. SHIM BETWEEN BRACKET AND SFS FOR TOLERANCE.

SIDERISE RV BARRIER TERMINATED AT THE REAR OF THE ALUMINIUM CLADDING PANEL TO BE INSTALLED IN ACCORDANCE WITH MANUFACTURERS GUIDELINES. THE BARRIER IS TO BE TIGHTLY NOTCHED AROUND THE HORIZONTAL RAILS. ANY GAPS SHOULD BE MADE GOOD WITH OFFCUTS OF THE BARRIER MATERIAL AND THEN FINISHED WITH A STRIP OF SIDERISE FOIL TAPE RFT 120/45 OVER THE INTERFACE BETWEEN THE BARRIER AND RAIL.

SFS WALL SET OUT FROM GRIDLINE (UNLESS NOTED OTHERWISE) PLEASE REFER TO STANMORE GROUP 6 DRAWINGS (001000 SERIES) FOR SFS SETTING OUT AND FIXING INFORMATION. PLEASE REFER TO PTS EBE-STN-ZZ-ZZ-PS-X-180021 FOR STANDARD SFS INSTALL DETAILS

INDICATES LINE OF SLAB EDGE AND 15MM CONSTRUCTION TOLERANCE

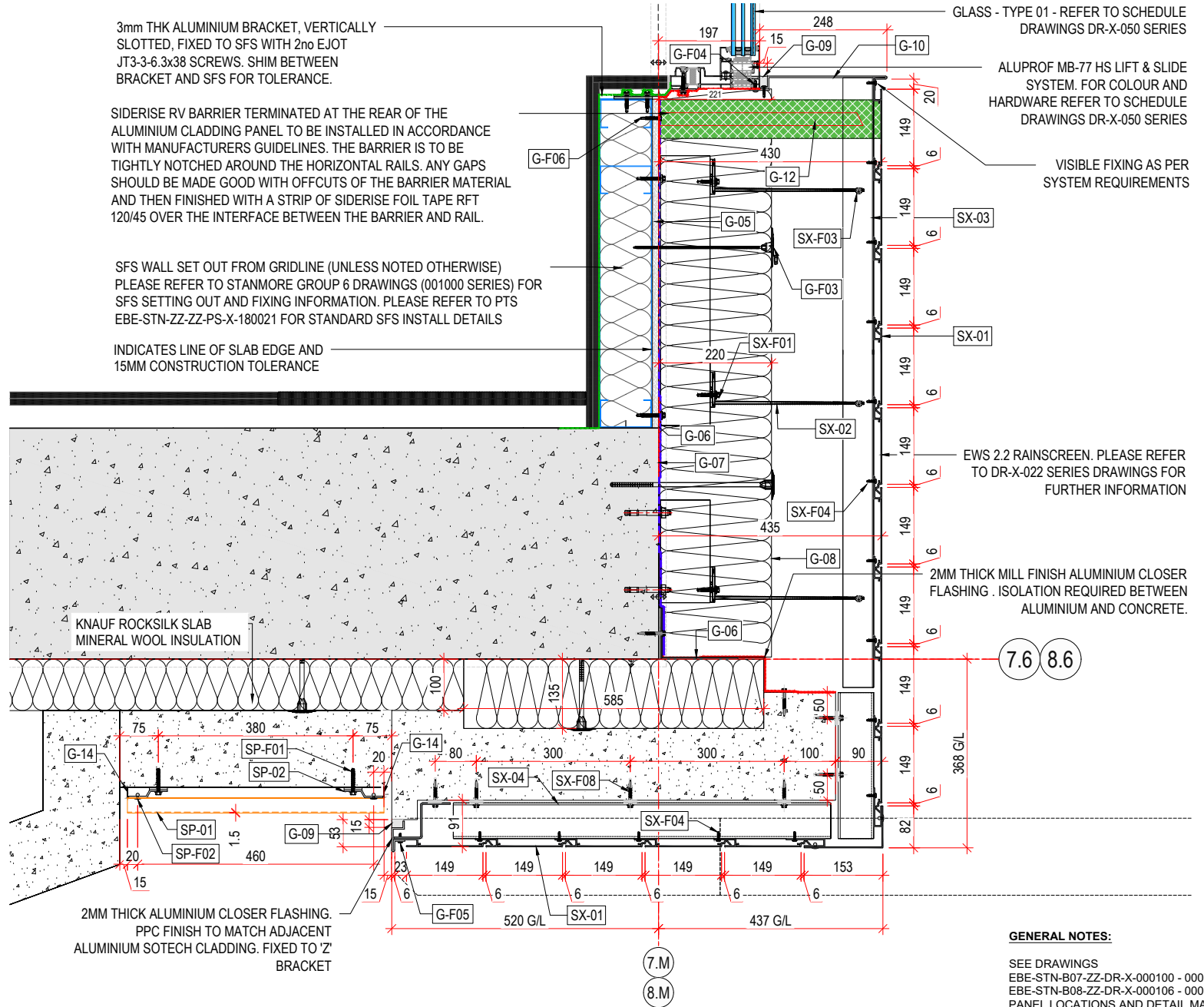
GLASS - TYPE 01 - REFER TO SCHEDULE DRAWINGS DR-X-050 SERIES

ALUPROF MB-77 HS LIFT & SLIDE SYSTEM. FOR COLOUR AND HARDWARE REFER TO SCHEDULE DRAWINGS DR-X-050 SERIES

VISIBLE FIXING AS PER SYSTEM REQUIREMENTS

EWS 2.2 RAINSCREEN. PLEASE REFER TO DR-X-022 SERIES DRAWINGS FOR FURTHER INFORMATION

2MM THICK MILL FINISH ALUMINIUM CLOSER FLASHING. ISOLATION REQUIRED BETWEEN ALUMINIUM AND CONCRETE.

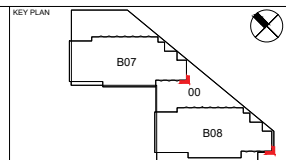


PLEASE SEE EBE-STN-ZZ-ZZ-SH-X-000002 FOR DRAWING ITEM DESCRIPTIONS AND PTS REFERENCES. PLEASE REFER TO PTS DOCUMENTS FOR MANUFACTURER INFORMATION. ALL FIXINGS TO BE STAINLESS STEEL. FOR WATERPROOFING AND PRE-CAST DETAILING REFER TO THE RELEVANT SUBCONTRACTORS DESIGN. STANMORE DRAWINGS CONTAIN DESIGN LIMITED TO STANMORE FACADE PACKAGE AND WILL NOT NOTE SPECIFIC INFORMATION OF OTHER CONTRACTORS ELEMENTS.

2MM THICK ALUMINIUM CLOSER FLASHING. PPC FINISH TO MATCH ADJACENT ALUMINIUM SOTECH CLADDING. FIXED TO 'Z' BRACKET

**GENERAL NOTES:**  
SEE DRAWINGS  
EBE-STN-B07-ZZ-DR-X-000100 - 000105 &  
EBE-STN-B08-ZZ-DR-X-000106 - 000111 FOR  
PLAN LOCATIONS AND DETAIL MARKERS

ALL REVISIONS	LINKED MODEL SCHEDULE			
S4	005	06/10/2022	TERRACOTTA CHANGED TO ALUMINIUM	HTI   HT   SB   SB
S4	004	12/10/2022	CORRUGATED PANEL ORIENTATION CHANGED	DLJ   DLJ   CH   CH
S4	003	21/09/2022	GENERAL NOTES UPDATED: INSULATION FIXINGS ADDED. COMMENTS RELATING TO WORKS BY OTHERS DISREGARDED AS INSTRUCTED BY BYUK. FLASHING COMMENT DISREGARDED AS PER BYUK INSTRUCTION.	DLJ   DLJ   SB   CH
S4	002	22/07/2022	ISSUED FOR CONSTRUCTION	DLJ   DLJ   SB   CH
S4	001	15/07/2022	ISSUED FOR CONSTRUCTION	DLJ   DLJ   SB   CH
STATUS	REV	DATE	DESCRIPTION	DSG   DRW   CHK   APP



MAIN CONTRACTOR

Bouygues UK  
Becket House  
1 Lambeth Palace Rd  
Lambeth, London SE1 7EU  
Tel: 020 7601 9020

CLIENT LOGO

City of Westminster

ORIGINATOR

Stanmore Contractors Ltd  
Stanmore House  
Clyroc Business Park  
Clyroc Manor Way, Epsom,  
Kent DA8 1DE  
Tel: +44 (0)1322 448448  
Fax: +44(0)1322 448448  
Email: mail@stanmoretd.co.uk  
Web: www.stanmoretd.co.uk

SCALE @ A3  
1:8

MODEL FILE NAME - REVISION  
EBE-STN-ZZ-ZZ-DR-X-031002 - C05

FIRST ISSUE DATE  
15/07/2022

PROJECT STAGE | STATUS CODE  
Stage 4 | S4 - Suitable for Stage Approval

PROJECT NAME		DRAWING TITLE	
Ebury Bridge Phase 01		EWS 3.1 INTERACTION - SOUTH CORNER PLAN DETAIL ABOVE WINDOW TYPE W-2c	
PROJECT	ORIGINATOR	VOLUME	LEVEL
EBE	STN	ZZ	ZZ
TYPE	ROLE	NUMBER	REV
DR	X	031002	C05