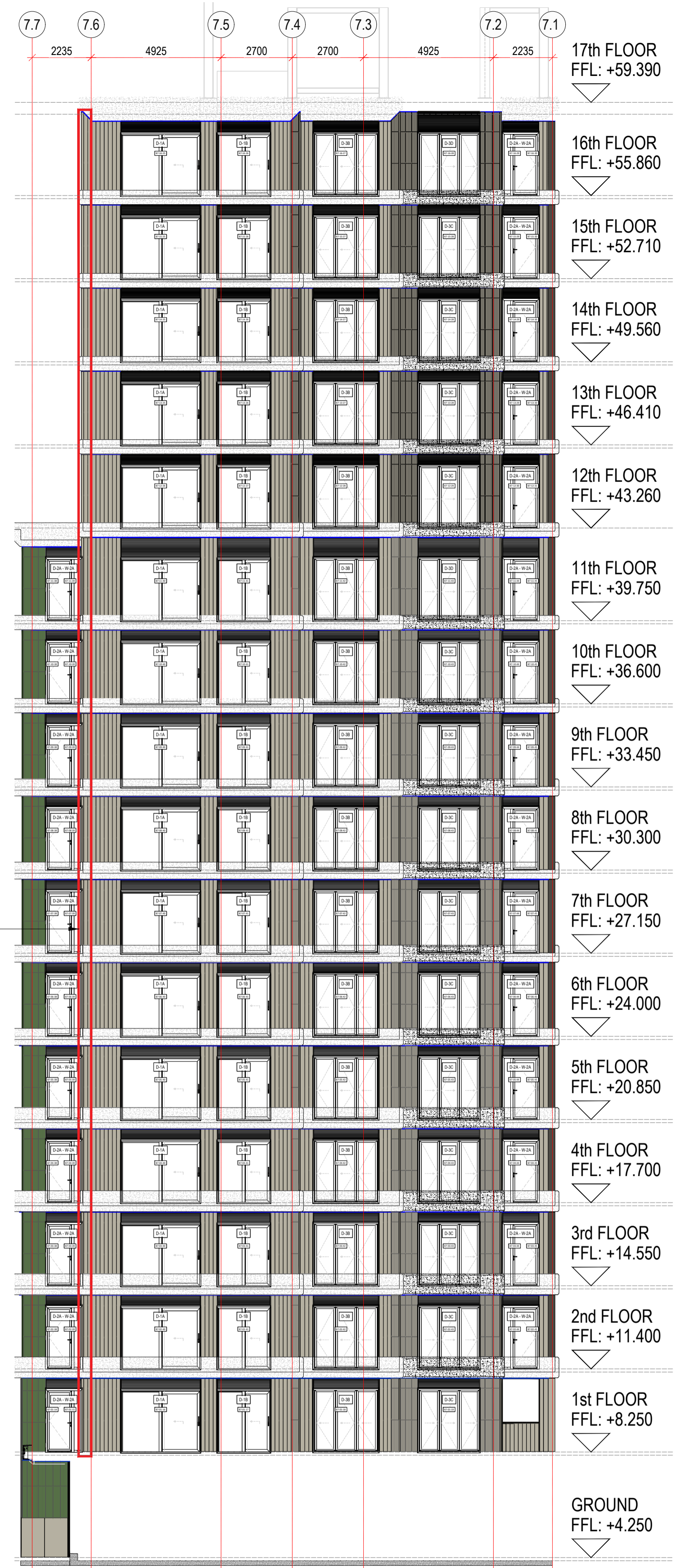


NORTH-WEST ELEVATION

SMALL RETURN PIECE OF CLADDING TO FACE OF PRECAST LEVEL 12-16 (SHOWN IN RED BOX) AT SOUTH WEST/NORTH WEST CORNER IS PROPOSED TO CHANGE FROM TERRACOTTA TO ALUMINIUM. PLEASE REFER TO TYPICAL PLAN DETAIL EBE-STN-ZZ-ZZ-DR-X-031013 AND TYPICAL SECTION DETAIL EBE-STN-ZZ-ZZ-DR-X-0310019

SMALL RETURN PIECE OF CLADDING TO FACE OF PRECAST LEVEL 1-16 (SHOWN IN RED BOX) AT SOUTH WEST/SOUTH EAST CORNER IS PROPOSED TO CHANGE FROM TERRACOTTA TO ALUMINIUM. PLEASE REFER TO TYPICAL PLAN DETAIL EBE-STN-ZZ-ZZ-DR-X-031002 AND TYPICAL SECTION DETAIL EBE-STN-ZZ-ZZ-DR-X-0310019



SOUTH-EAST ELEVATION

CLADDING TYPE HATCH KEY		
Cladding Hatch	System & Material	Colour
	EWS 2.1a Terracotta Rainscreen Cladding - 40mm Thick bespoke Argeton Tampa Tile	Colour Type 2 - RAL 6017
	EWS 2.1b Terracotta Rainscreen Cladding - 40mm Thick bespoke Argeton Tampa Tile	Colour Type 1 - RAL 7032
	EWS 2.2a Aluminium Rainscreen Cladding - Sotech Optima XPC 150mm wide Extruded Profile	PPC RAL 7044 Full Gloss

LINKED MODEL SCHEDULE

KEY PLAN

ALL REVISIONS

NO	DATE	DESCRIPTION	BY	CHK	APP
S3	P01	16/11/2023	First Issue	SB	SB   SB   SB
STATUS	REV	DATE	DESCRIPTION	DSG	DRW   CHK   APP

MAIN CONTRACTOR

**BOUYGUES UK**

Bouygues UK  
Beckett House  
1 Lambeth Palace Rd  
Lambeth, London SE1 7EU  
Tel: 020 7401 0020

CLIENT LOGO

**City of Westminster**

ORIGINATOR

**STANMORE**

Stanmore Contractors Ltd  
Stanmore House,  
Cyrroc Business Park,  
Church Manor Way, Erith,  
Kent DA8 1DE  
Tel: +44 (0)1322 448448  
Fax: +44(0)1322 448448  
Email: mail@stanmoretd.co.uk  
Web: www.stanmoretd.co.uk

SCALE @ A1  
1:125

MODEL FILE NAME - REVISION  
EBE-STN-B07-ZZ-DR-X-005001 - P01

FIRST ISSUE DATE  
16/11/2023

PROJECT STAGE  
Stage 4

STATUS CODE  
S3 - Suitable for Review & Comment

PROJECT NAME  
Ebury Bridge Phase 01

DRAWING TITLE  
Building B7 - South East and North West Elevation - Precast Cladding Change Proposal

PROJECT	ORIGINATOR	VOLUME	LEVEL	TYPE	ROLE	NUMBER	REV
EBE	STN	B07	ZZ	DR	X	005001	P01