



Project: 28 Dingwall Road

Address: 28 Dingwall Road,
Croydon,
CR0 2NH

Presented to: **Hannah Fifield**

Date: 17th November 23

Barbora Novotna
Sales & Account Management

T: 0749 569 2204

E: "barbora.novotna@upfho.onmicrosoft.com"



Passionate About Plants

Urban Planters began trading back in 1965 and in that time have grown to be the industry leading interior landscaper.

We love working with plants and we enjoy the challenge of finding new ways of incorporating plants and greenery to all workplace settings across the UK, through our network of operating branches.

As well as supplying plant displays, we also offer a grounds maintenance service, design and landscaping, green walls, a maintenance service for all our plant products and we can also add some Christmas cheer to your workplace with our Christmas decorating service. We like to think of ourselves as your complete horticultural solution.

We don't just care for our plants, we also care about our customers and our impact on the planet. Our latest initiatives are to invite our customers to give an honest appraisal of our products and services via Trustpilot (feel free to have a look at what others think of us), and we are now carbon neutral.



The Benefit of Plants

Plants benefit us in lots of ways, from adding oxygen and removing carbon dioxide, the removal of VOCs and NOx from the air we breathe and the biophilic benefit that plants have on our wellbeing.

They help us to maintain general good health at a time when it matters more than ever. They form green, healthy physical barriers which simultaneously improve mental wellbeing, improve cognitive performance and increase humidity levels, that in turn not only reduces the spread of exhaled droplets, but also maintains a healthy mucus membrane, reducing coughing and sneezing and giving us better protection against airborne particles and pathogens.

To read more on the benefits of plants, visit our website <https://www.urbanplanters.co.uk/benefits-of-plants/>

WHY HAVE PLANTS?

People have always intuitively sensed that contact with plants and nature is a calming restorative tonic for body and soul.

Over the past 25 plus years, academics and scientists have researched houseplants to establish exactly why and how they are good for us, our homes, our schools, our hospitals, our businesses and our environment as a whole and, in doing so, they have established that plants:

- Improve air quality and humidity levels.
- Reduce stress.
- Make people calmer and happier.
- Reduce workplace negativity.
- Reduce symptoms of discomfort and minor ailments.
- Reduce absenteeism.
- Speed up recovery from illness.
- Improve concentration, productivity and creativity.
- Save energy.
- Absorb noise.
- Increase shopper stay-time by half an hour when using in shopping malls.

For more information visit: www.urbanplanters.co.uk/benefits-of-plants/

HEALTHY
• Clean Air
• Humidity
• Noise
• Stress
• Productivity
• Creativity
• Concentration
• Recovery
• Absenteeism

AIR QUALITY
• Dust
• Bacteria
• Moulds
• VOCs
• CO2
• Ozone

HEALTHY
• Hypertension
• Diabetes
• Allergies
• Asthma
• Mental Illness

PRODUCTIVITY
• Creativity +12%
• Absenteeism -15%
• Concentration +10%
• Recovery +20%

GREEN
• Humidity +20%
• Noise -10%
• Stress -15%
• Productivity +10%
• Creativity +12%

for a greener world | www.urbanplanters.com | LinkedIn | Facebook | Twitter | Instagram

AIR-FILTERING HOUSEPLANTS

It won't surprise you to hear that the majority of people spend the bulk of their time indoors, whether it's at home, work or having fun. As such, it's important to ensure that air quality is of a high standard, something that indoor plants can help achieve. Back in 1989 NASA conducted a Clean Air Study in association with Associated Landscape Contractors of America, in an effort to find the most effective common indoor plants for filtering harmful toxins and pollutants from the air.

The results still hold true today and we are pleased to promote the 10 most effective air-filtering plants for your indoor space.

Spider Plant Chlorophytum "Spider Plant"	Chrysanthemum morifolium	Dracaena marginata	Snake plant Sansevieria trifasciata "Snake plant"
Hedera helix	Epipremnum aureum	Aloe vera	Philodendron
Dracaena fragrans 'Massangeana'	Ficus benjamina	What's in our soil? These are the most common ones that contaminate our indoor air and have been found to impact on our health.	

for a greener world | www.urbanplanters.com | LinkedIn | Facebook | Twitter | Instagram

INDOOR POLLUTION

Plant-filled rooms contain **50-60%** fewer air-borne moulds and bacteria than rooms without plants.

Dr. C. J. Richardson of the Environmental Laboratory of the John C. Semple Space Centre, NASA USA

#ValueofPlants
An Urban Planter's Guide to the Benefits of Plants

PRODUCTIVITY

Enriching a 'lean' office with plants could increase workplace productivity by as much as **15%**

University of Exeter, 2014

#ValueofPlants
An Urban Planter's Guide to the Benefits of Plants

INDOOR POLLUTION

40% of all absenteeism is attributed to indoor air pollution, often referred to as indoor air quality (IAQ).

With permission of the Association of Air Pollution Control Officers

#ValueofPlants
An Urban Planter's Guide to the Benefits of Plants

The Value of Plants®

An Urban Planters Guide to the Benefits of Plants



Proposal Summary

- Professional planting proposal is based on Outright purchase plan, maintenance scheme is also available
- Basement
- Reception Lobby - Plants/ flowers – Orchid
- 3rd level terrace.
- Roof terrace planting

This estimate is based on:

- There will be access to each floor by lift is essential for completing works in this proposal
- There is available tap to install irrigation system to assure plants have sufficient water during hot summer months.
- All exterior planters include irrigation system – please note, battery will require switching off during winter months when temperature can drop below 0°C
- Exterior planters have a drainage holes to avoid water-logging
- Please make sure there is balustrade on terrace is taller than 2/3 of planter's height - tall planters are 1500mm/h
- Should we incur delays once our install dates have been confirmed due to the site not being ready for us that any cost, we incur will be chargeable
- **Annual plant maintenance:** there will be 12 site visits per annum and will include watering, feeding, cleaning, pruning & pest control, weeding and spraying seeds, cutting back plants as required to keep them in neat and presentable shape.
- Our cost are subject to confirmation after site visit



Sustainability & Biodiversity

Urban Planters are driven from Director level throughout the entire business to constantly assess, review, reduce and improve our environmental impact on the planet.

We reinforce and encourage a culture of sharing best practise with recycling, upcycling with projects large and small with every person within the business. These initiatives range from carbon negativity, reducing plastic within the supply chain, sourcing sustainable plants and materials and even reach as far as all printed medium being 100% post-consumer waste printed using vegetable inks and giving reusable water bottles and bamboo coffee cups to all team members. It's the little things we do together which makes the biggest impact.

Urban understand the Greengage report and would support the client with introduction of the recommended items and have issued proposals to the client for several sites already. We are passionate and understand the importance of Sustainability and Biodiversity for us all and hope the below shows how we can support your project in this.

Urban planters are award winners in this field and have won Green Apple awards for sustainability and Biodiversity improvements with several clients.

Urban Planters head office is currently carbon negative and all Urban operating centres nationally will be carbon negative by 2023.



Basement planting



This estimate is based on:

- The area is 24m²
- Lower ground location is south facing although very shady as planting is right by 3.5m/h wall.
- This area requires hardy, native planting which will cope with shade and pollution
- Generator will need to be accessible from front
- There is requirement for climbers to cover the walls.
- There is a tap available to connect irrigation system to help plants to naturalise.
- Planting specimens chosen for this area will be mature to make sure they settle down successfully in their new habitat
- 60x Super Root compost XL / 60 litre black – we will require site visit to confirm
- Planting was selected from shade loving specimens, bee friendly shrubs as well as native species:
 - 1x Betula u. Jacquemontii 250-300cm multistem
 - 3x Cornus sang. 'Midwinter: 100 cm/h
 - 3x Crataegus media 'Paul'sScarlet' 130 cm/h
 - 3x Ligustrum ovalifolium 150 cm/h
 - 6x Fatsia JaponicaPot size: 38 cmHeight: 100 - 125 cm"
 - 30x Pachysandra terminalis: 20 cm/h ground cover
 - 12x Sarcococca hook. 'Winter Gem' 65 cm/h
 - 9x Viburnum opulus 'Roseum 100 cm/h
 - 9x Viburnum Plicatum Mariesii 25LTR 100CM/h
 - 2x Garrya elliptica 'James Roof'Pot size: 40 cmHeight: 100 - 125 cm
 - 10x Hedera Hibernica: 180 cm/h climber

Lower ground planting Shade loving bee friendly shrubs and trees



Fatsia japonica
100-125cm/h



Betula u. Jacquemontii



Crataegus x media
'Paul's Scarlet' 130cm,



Sarcococca hookeriana
Winter Gem



Hedera Hibernica



Viburnum opulus 'Roseum'



Cornus sanguinea
'Midwinter Fire'
midwinter fire dogwood



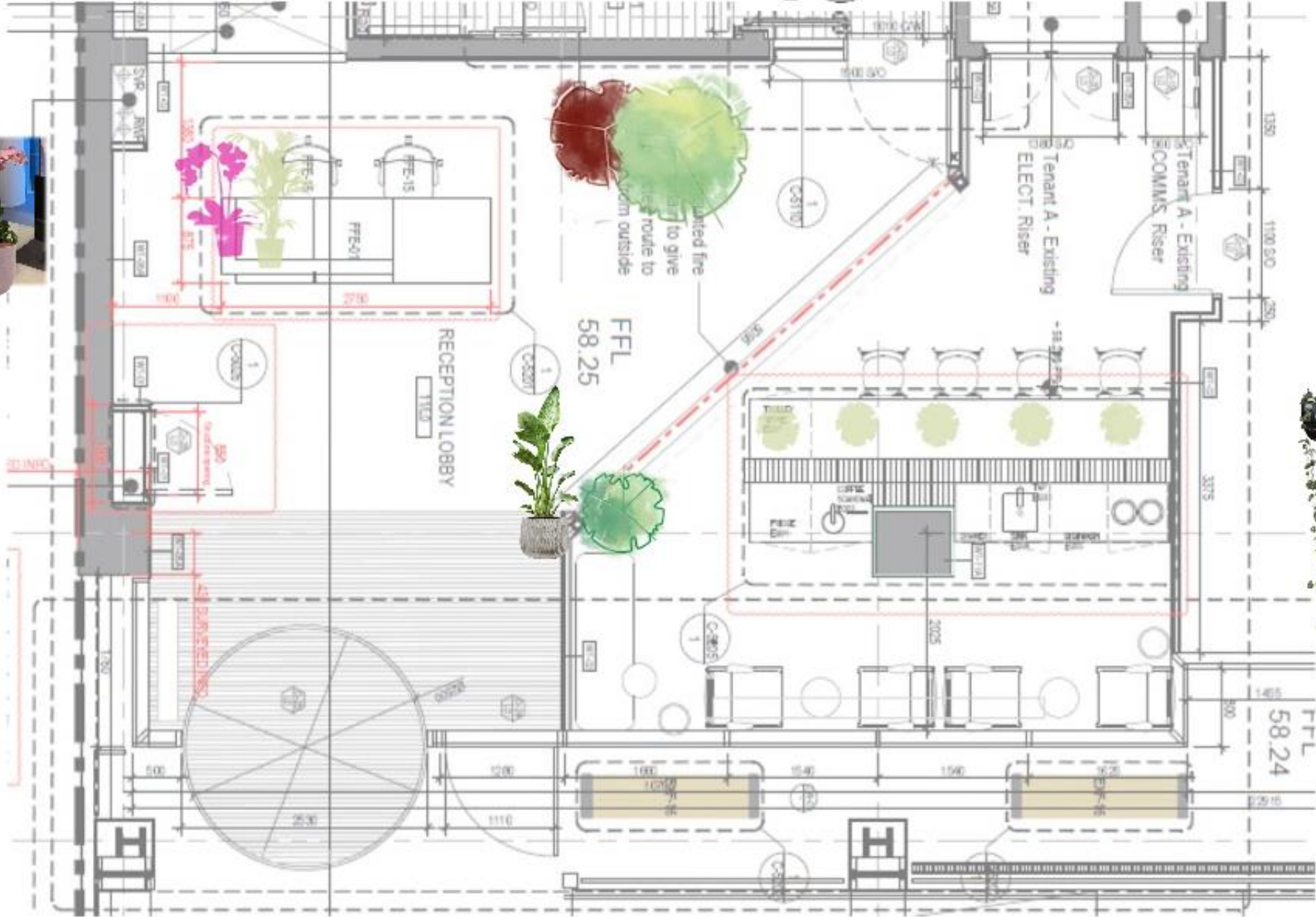
Viburnum Plicatum Mariesii



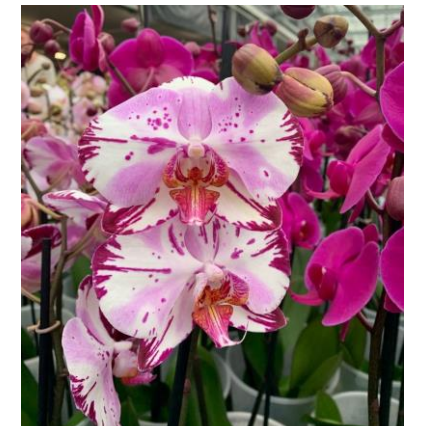
Garrya elliptica
'James Roof'
100-125cm/h



Floor plan



Reception desk



Orchids are being changed on four-weekly basis.
When the plants are still in flower, member of staff can re-home them

Orchid bowl 3ppp

SC71 Sienna Height: 18cm x Diameter: 24cm

Asparagus setaceus plumosus Height:20Width:20Potsize:12/10"

SC70 Sky Height: 18cm x Diameter: 15cm "

Reception



Planting Details:

Ficus elastica 'Abidjan' Bush

Height: 120 Plain Coppa Sepia, Height:68 Diameter:50

Ficus Exotica Pot size: 40 cm Shape: Ball on stem Type:

Braided Color: Green Height: 180 cm

Plain Coppa Sepia Height:50, Depth: 48 Diameter:50

Sustainably friendly ceramic planters.





Planting Details:

1x Strelitzia nicolai 2pp, Height: 180

Plain Coppa Sepia Height:50, Depth: 48 Diameter:50

Main room



Planting Details:

BeliaPot Vintage Black (set of 4) Height:20 Diameter:23

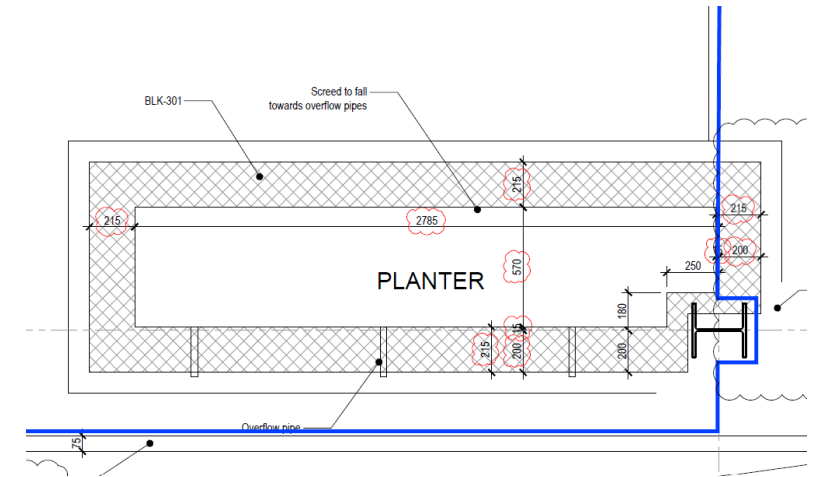
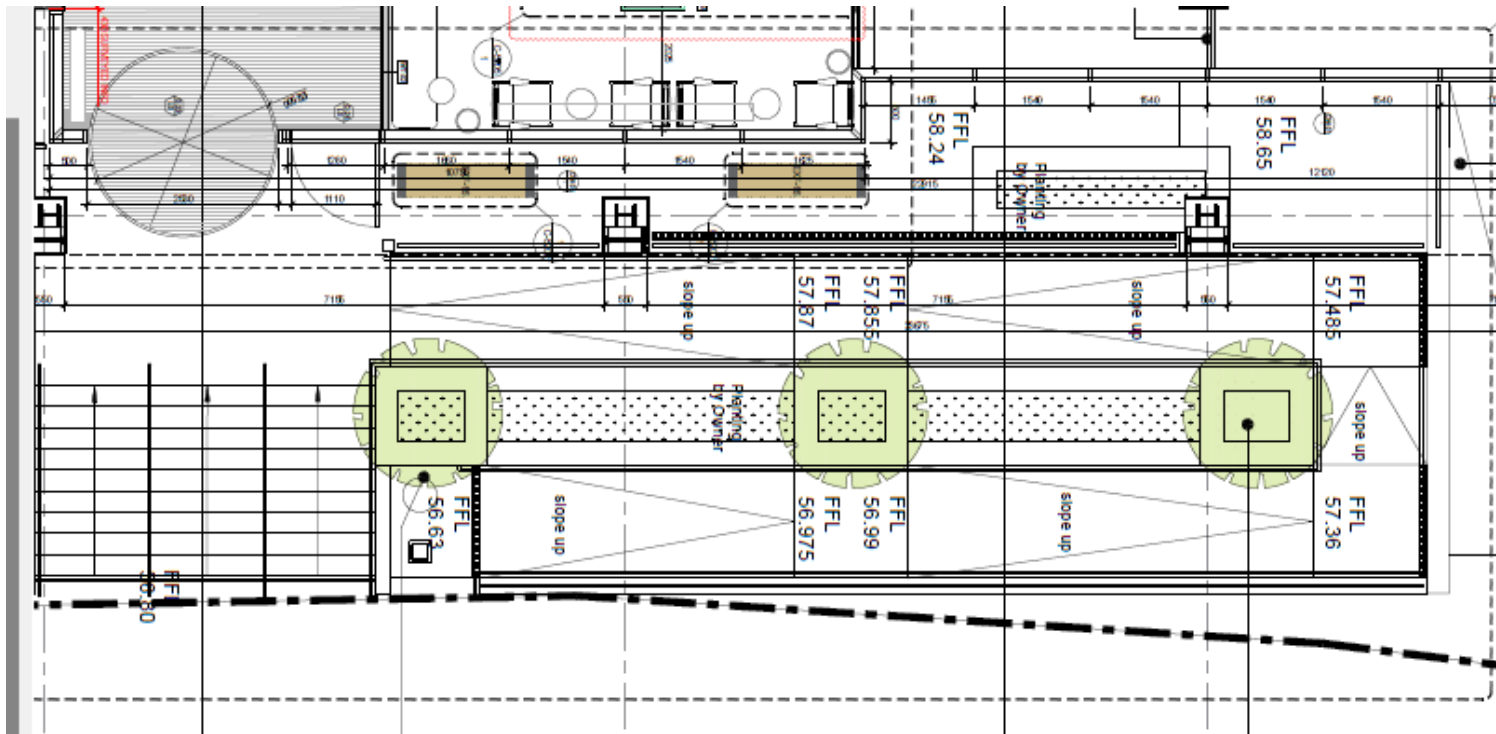
Asparagus setaceus plumosus 6/tray Height:20 Width:20 Potsize:12/10

Ceropegia woodie Hanger Height:40 Width:16 Potsize:14/12

Zamioculcas zamiifolia Tuft Height:30 Width:15 Potsize:11/9

Maranta leuconeura 'Fascinator' 10/tray Height:35 Width:20 Potsize:12/10

Entrance planting plan



Peat free compost – PLEASE NOTE this quote is based on external planters being 700mm deep the measurement has not been provided

3no tall planters:

Betula u. Jacquemontii 250-300cm multistamPot size: 50 cm"

2no long planters:

Stipa tenuissima 'Ponytails'
 Geranium Rozanne
Euphorbia amygdaloides Ruby Glow
 Anemone 'Praecox'
 Lavandula Angustifolia Hidcote
 Ilex crenata 'Stokes'

1no planter :

Stipa tenuissima 'Ponytails'
 Geranium Rozanne
Euphorbia amygdaloides Ruby Glow
 Anemone 'Praecox'
 Lavandula Angustifolia Hidcote
 Ilex crenata 'Stokes'

Entrance planting

Lavandula
Angustifolia
Hidcote



Anemone
'Praecox'



Betula u.
Jacquemontii



Euphorbia am.
'Ruby Glow' rhs
Recommended



Geranium
Rozanne

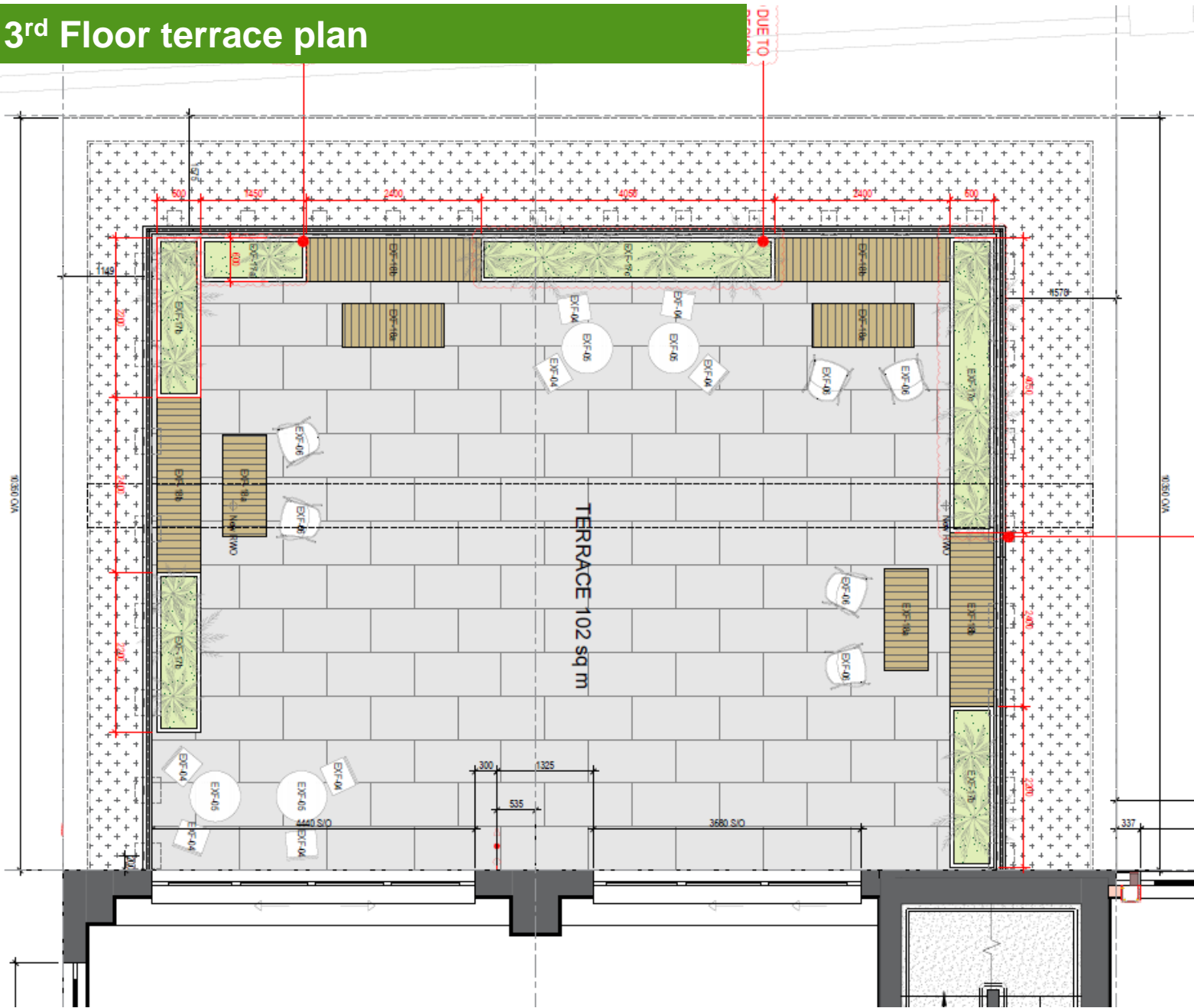


Stipa
tenuissima
'Ponytails'

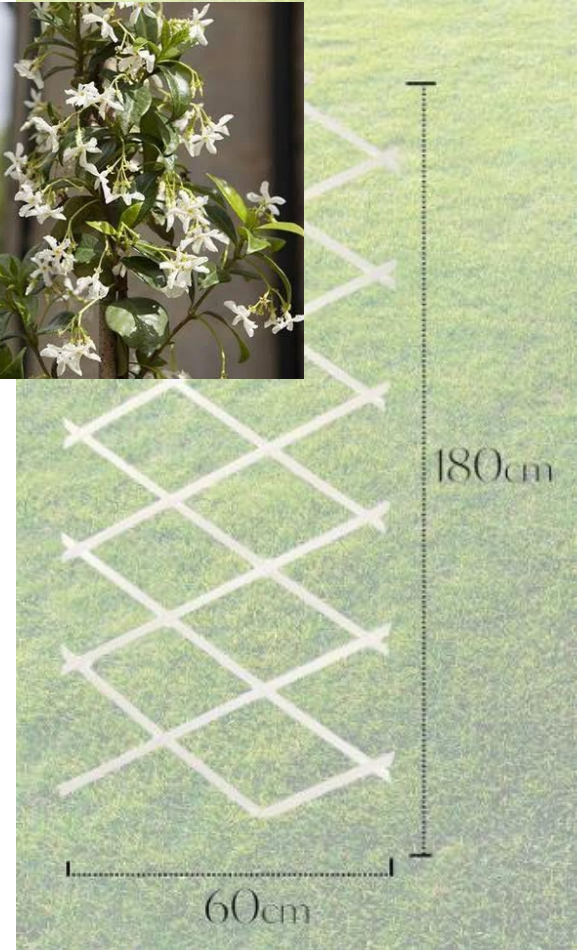


Ilex crenata
'Stokes'

3rd Floor terrace plan



Trachelospermum Jasminoides



Level 3 terrace plan

Hydroleuca and Lightweight Roof Soil (Intensive)

3no Plant bed 2.2m

Trachelospermum Jasminoides

Betula u. Jacquemontii

Skimmia Japonica

Stipa tenuissima 'Ponytails'

Geranium Rozanne"

Euphorbia amygdaloides Ruby Glow

Anemone 'Praecox'

Lavandula Angustifolia Hidcote

1no Plant bed 1.45m

Miscanthus sinensis 'Kleine Silberspinne'

2no Plant bed 4.05m

Betula u. Jacquemontii

Skimmia Japonica

Stipa tenuissima 'Ponytails'

Geranium Rozanne

Euphorbia amygdaloides Ruby Glow

Anemone 'Praecox'

Lavandula Angustifolia Hidcote

Summer and Winter bedding change:

Begonia Nonstop Peach

Leucophyta brownii Challenge

Viola cornuta delini yellow+purple

Cyclamen Premium Edge

Exterior Planting Scheme

Lavandula
Angustifolia
Hidcote



*Betula u.
Jacquemontii*



Euphorbia am.
'Ruby Glow' rhs
Recommended



Anemone
'Praecox'



Stipa tenuissima
'Ponytails'



Skimmia Rubella



Geranium
Rozanne



Miscanthus
sinensis
'Kleine
Silberspinne'



Summer and Winter bedding

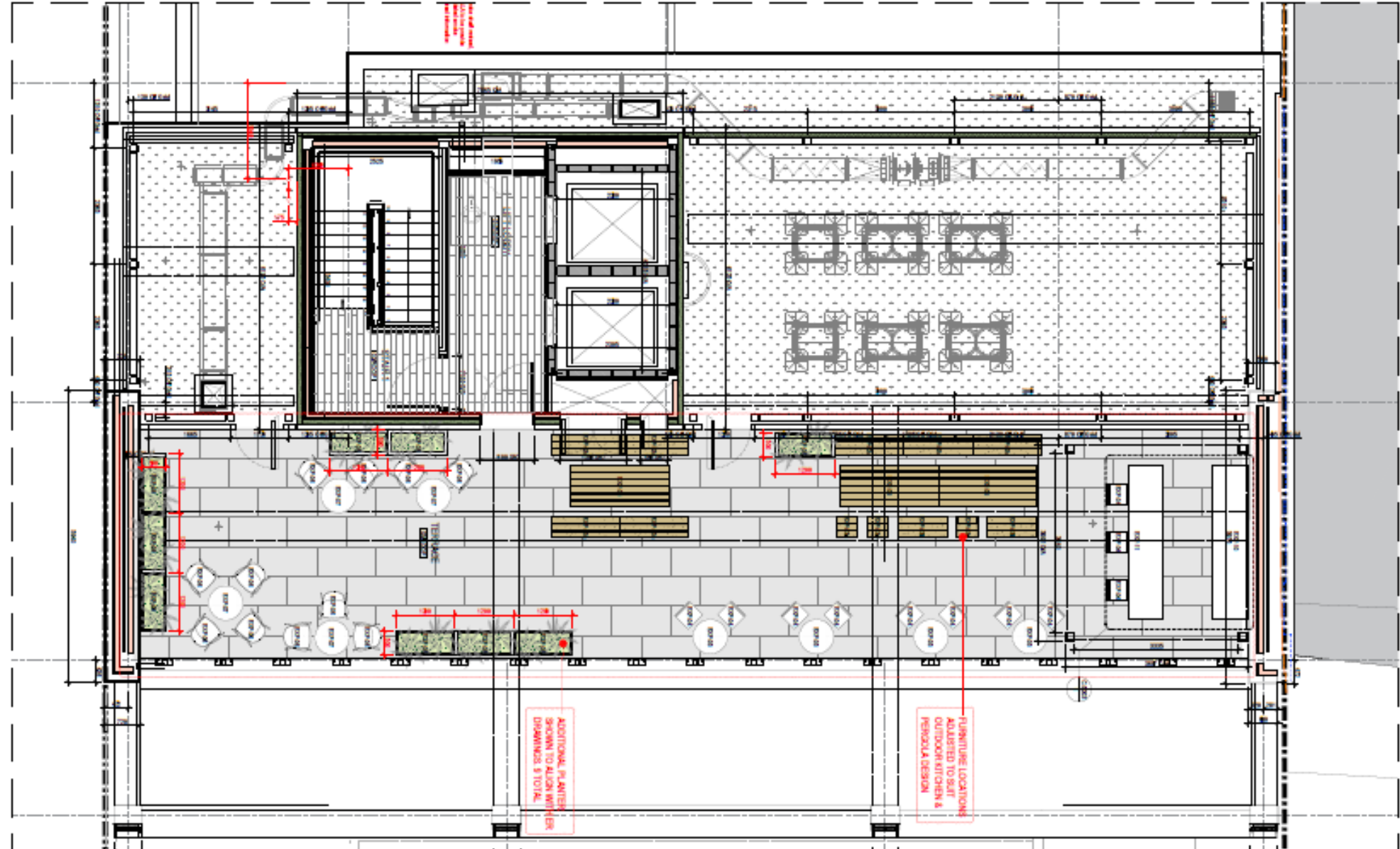


Summer:
Begonia Nonstop Peach

Winter:
Leucophyta brownii Challeng
Viola cornuta deltni
yellow+purple
Cyclamen Premium Edge



Level 8



L8 –Planting plan

Hydroleuca and Lightweight Roof Soil (Intensive)

9x Planters

4x Ilex crenata 'Stokes' – feature plant in 4 planters

5x Skimmia Rubella – feature plant in 5 planters

18x Stipa tenuissima 'Ponytails' – side plant 2x per planter

12 x Geranium Rozanne - planted in cluster of 3

12 x Euphorbia am. 'Ruby Glow' - planted in cluster of 3

12 x Anemone 'Praecox' - planted in cluster of 3

18 x Lavandula Angustifolia Hidcote - planted in cluster of 3

Level 8 planting

Lavandula
Angustifolia
Hidcote



Anemone
'Praecox'



Stipa
tenuissima
'Ponytails'



Skimmia Rubella



Geranium
Rozanne



Euphorbia am.
'Ruby Glow' rhs
Recommended



Innovations & Sustainability: Animal Habitats

Artisan Bamboo Bird, Bee And Butterfly Base Habitats

Create shelter for butterflies, moths and lacewings. This house is best positioned near nectar-rich flowers, which will provide a vital food source for any residents. An access hole at the rear of the house allows for cleaning. The butterfly house measures H 21cm x W 12cm x D 10cm

This insect and bee house is ideal for attracting solitary bees, ladybirds and other beneficial insects such as lacewings to your garden. These invertebrates provide the vital role of pollination in your garden and are great at predator control, munching through aphids and the like.

Welcoming birds to the garden is essential, and this cute bird box will be favoured by small wild bird species who value the protection offered by the enclosed space, as well as the warmth from the woven material. An access hole at the rear of the house allows for cleaning. The bird house measures H 21cm x W 12cm x D 10cm



Innovations & Sustainability: Animal Habitats

The Bee Pot Bee Hotel

“The BeePot Bee Hotel is a fantastic concrete planter which doubles as a nesting place for solitary bees with space for pollinator friendly planting. Available in a range of colours.

Each BeePot contains cavities for solitary bees to lay their eggs - they will then seal the entrance with mud or chewed-up vegetation. The offspring will emerge in the following spring and the cycle begins again.

Bee Blocks are cast from concrete using 75% waste material from the Cornish china clay industry. This makes them both long-lasting and environmentally friendly.

The BeePot should be positioned in a warm sunny spot, preferably on a south-facing wall, with no vegetation in front of the holes. Ideally, they should be positioned at a height of at least 1 metre from the ground. It is highly recommended that bee-friendly plants are located nearby so that the bees using the BeePot have food, otherwise it is unlikely that the BeePot will be used. Lavender, honeysuckle and buddleia are all pollinator-friendly plants. The planter has drainage holes, allowing the soil to be easily drained.

Solitary bees are non-aggressive and will not sting you unless you handle them roughly or annoy them, and even then, their stings are not painful. They are a vital part of your local biodiversity and should be encouraged and cherished”

BeePots come in the following dimensions:

- 285 x 195 x 200mm
- 105 x 105 x 105mm



Sales Option

Outright Purchase, Maintenance OR Rental & Maintenance Plans

Supply and installation of the above under our maintenance or rental & maintenance agreement, which includes our ongoing monthly maintenance service for live planting.

Planting Scheme	You Own The Plants	We Look After Your Plants & Guarantee They Look Great	OR	We Own Your Plants & You Enjoy Them	
	Outright Purchase	Maintenance Plan cost per annum		Rental & Maintenance Plan cost per annum	
				3 year	5 year
TOTAL COST	£25,111.96	£6,814.22		n/a	n/a

- This proposal is subject to a site survey being undertaken and we reserve the right to substitute any planting with a similar sized plant that will also thrive in the desired location.
- We will endeavour to achieve your target delivery date; however, we cannot confirm a delivery date until an order is placed, payment has been made and we have checked the product lead times and our local branch's labour resource availability.

* The cost stated above is the fixed price per year.



Project breakdown

Display type	Quantity
Floor standing plant displays	3
Flowering receptions display	1
Desktop pots	4
Exterior planting Basement,	1
Exterior planting entrance	5
Exterior planting L3	6
Exterior planting L5	9
Artisan Bamboo Bird, Bee And Butterfly Base Habitats	1
Bee Pot hotel	1
Total	31



Project breakdown

Display type	Quantity
Irrigation system	£607.68
Plants	£10,605.73
Planters/ containers	Provided by others
Soil	£3,398.55
Labour	£10,500.00
Total	£25,111.96





Additional ideas

Innovations & Sustainability: Animal Habitats

Habitats from Vestre

Habitat Wings – “bird house is part of the Vestre Habitats series, where the products are designed to protect and increase biodiversity in cities. The lack of safe nesting spaces means that new flocks of birds are unable to establish themselves. This problem could be overcome by putting up more nest boxes. The Wings bird house is one such solution and comes in several variations.”

Habitat Leaf – “is part of the Vestre Habitats series, where the products are designed to protect and increase biodiversity in cities. Leaf is an insect hotel that gives insects a home in urban neighbourhoods. The shape of the product is based on a stylised leaf. The design is minimalistic and also has a sculpture-like character which can easily be placed either alone or in groups.”

Leaf can be placed in planters, flower beds, on roof terraces or in parks—you can let your imagination run wild. The most important thing to remember is to ensure that the biological, species-typical parameters are considered and thus enrich the opportunities for insects to survive in urban environments.”

Habitat Decay Edge – “is part of the Vestre Habitats series, where the products are designed to protect and increase biodiversity in cities. The House bench makes it possible to frame and arrange logs and branches in an organised stack so that you can sit on the bench and watch the slow decomposition process. Old trees are vital for conserving biodiversity, as they are home to many rare species of insects, fungi, lichen, mosses and plants. Many birds and bats need hollow trees to nest and reproduce in, and birds also need resting places.”



Innovations & Sustainability: Animal Habitats



Innovations & Sustainability: Animal Habitats

Artisan RSPB Bird Nester

Position these roosting pockets in ivy, bushes or hedges to give birds somewhere cosy to shelter. The teardrop-shaped Tahera has a small opening, making it perfect for tits and finches, the oval-shaped Shesali would be ideal for a roosting pair, and the sphere-shaped Anita offers a larger cavity perfect for small species who roost together.

During the breeding season, when small birds may choose to use these products for nesting, locating the nesters in thick cover will help reduce the risk of predation.

- Handmade by Fairtrade artisans in Bangladesh.
- Natural sea grass and recycled sari material, making each one unique in colour.
- Measure between 33cm and 40cm tall (including hanging rope).

Dimensions:

Artisan Bird Nester - Anita: 15cm (W) x 18cm (H) x 18cm (D)

Artisan Bird Nester - Shesali: 13cm (W) x 23cm (H) x 18cm (D)

Artisan Bird Nester - Tahera: 12cm (W) x 29cm (H) x 12cm (D)

Dimensions (including hanging rope on top):

Artisan Bird Nester - Anita: 15cm (W) x 33cm (H) x 18cm (D)

Artisan Bird Nester - Shesali: 13cm (W) x 36cm (H) x 18cm (D)

Artisan Bird Nester - Tahera: 12cm (W) x 40cm (H) x 12cm (D)



Innovations & Sustainability: Square Mile Farms

Square Mile Farms

FARMSTANDS

Free Standing, plug-and-play units for flexible installations growing 24 plants. Made from ocean bound recycled plastics.



Description

The Farmstand is a self watering hydroponic system. A pump recirculates water and nutrients from the reservoir in the base to the plants.



Made From Ocean Bound Plastics

On average, the Farmstand saves 74 milk jugs from polluting our oceans.



95% Less Water Usage

The Farmstand reservoir reclaims water for your next watering cycle



Grows Fresh Produce Year Round

Each Farmstand grows 24 edible plants, indoors without soil.



Innovations & Sustainability: Square Mile Farms

Square Mile Farms

FARM WALLS

Larger scale fixed installations, Modular or bespoke. Growing minimum of 63 plants.

Optional, customised finishes and accessories are available:

- Architectural wraps to match your décor
- Magnetic whiteboards
- Projector screens
- Companion digital information screen
- CNC Etching
- Corporate logos
- Photocatalytic Oxidising active air-cleaning coating

Hydroponic Farmwall specification

1.1M UNIT DESCRIPTION

- Height - 2200mm
- Width - 1100mm
- Protrusion from wall - 300mm to 500mm
- 1.7sqm growing area
- 63 plants
- Two plugs - pump & lights
- Hydroponic - no soil required
- Water reservoirs in base
- Nutrient & pH control unit for larger units*



*Optional extra - not included in quote



Innovations & Sustainability: Square Mile Farms

Square Mile Farms

Harvest Event

Fostering 'collaboration, camaraderie and culture' with our clients and their teams. Our harvest Events bring people together to actively engage with the farms.

Growing over 40 varieties of leafy-green veg, salad leaves and herbs. See the below examples.





Sustainable transformation with Urban Planters

Sustainability & Biodiversity – Example of previous project

Westfield Nature Reserve

Working with another of our clients we created a green Biodiverse nature area on a previously unused piece of land by the side of the road. By introducing wildflower meadow, fruit trees, vegetable garden, natural pond, beehive, insect hotels, berry bed and native hedge we have created an area that is now visited frequently by staff, local schools and tenants.

We have engaged with two local special needs schools and the teachers and students visit on a weekly basis to work alongside our maintenance team on maintaining and developing the area.



Sustainability & Biodiversity



Sustainability & Biodiversity



Sustainability & Biodiversity



Sustainability & Biodiversity



Sustainability & Biodiversity



Executive Summary – Sustainability & Biodiversity



Maintenance Details

Indoor Live Plant Display Maintenance

Maintenance visits will be carried out as specified and shall include all the necessary plant care i.e. watering, feeding, cleaning, pruning, pest control and automatic plant replacement, of any dead, dying or overgrown plants with others of a similar nature and size to those supplied at installation, or from the commencement date of our maintenance service at no additional cost. The replacement of dead or dying plants where vandalism or abnormal conditions are responsible is not included as part of our internal live plant maintenance service. This includes any damage by adding or attaching of liquids / fluids / decorations / lighting or any other matter or material to the internal live plant displays, whether accidental or otherwise. After each maintenance visit we have a maintenance service docket signed by a nominated person from your own staff.

Outdoor Live Plant Display Maintenance

Maintenance visits will be carried out as specified and shall include all the necessary plant care i.e. watering, feeding, cleaning, pruning & pest control. Unless provision has been made and detailed in the schedule, plant replacements of any overgrown, dead, dying, vandalised or stolen plants is not included as part of our outdoor live plant maintenance service and will be costed and charged for separately as required. After each maintenance visit we have a maintenance service docket signed by a nominated person from your own staff.

Indoor Replica & Preserved Plant Display Maintenance

Maintenance visits will be carried out as specified and shall include all the necessary plant care inclusive of cleaning, re-dressing of all foliage and re-bonding of top dressing. After each maintenance visit we have a maintenance service docket signed by a nominated person from your own staff.

Outdoor Replica Plant Display Maintenance

Maintenance visits will be carried out as specified and shall include all the necessary plant care inclusive of cleaning, re-dressing of all foliage and re-bonding of top dressing. After each maintenance visit we have a maintenance service docket signed by a nominated person from your own staff.



Terms & Conditions

Assumptions

- We have assumed that workplace welfare provision will always be made available to us free of charge when we are on site.

Terms

- This quotation is valid for 30 days from the date of issue.
- Our outright purchase plan is subject to our terms and conditions of sale.
- Our rental and maintenance plan is subject to our terms laid out in our Rental Agreement.
- Our plant maintenance and living wall maintenance plans are subject to our terms laid out in either our Maintenance Agreement or Living Wall Maintenance Agreement.
- No order will be processed or maintenance of goods carried-out prior to receiving a signed copy of acceptance to either our terms & conditions of sale, or rental agreement, or maintenance agreement along with the accompanying payment as below.
- This proposal is subject to a site survey being undertaken and we reserve the right to substitute any planting with a similar sized plant that will also thrive in the desired location.
- We will endeavour to achieve your target delivery date; however, we cannot confirm a delivery date until an order is placed, payment has been made and we have checked the product lead times and our local branch's labour resource availability.

Payment

- Rental & Maintenance – The initial payment will be for the first 6 months' hire and will be payable on order and prior to the goods being ordered. Thereafter, quarterly in advance by BACS throughout the period of hire.
- Outright Purchase - Paid in full on order and prior to the goods being ordered.
- Maintenance Only – Paid quarterly in advance by BACS throughout the period of Maintenance Service.



Barbora Novotna
Sales & Account Management

M: 0749 569 2204

E: barbora.novotna@urbanplanters.co.uk

T: 0208 572 9708

Urban Planters London West
Unit 16, National Works
Bath Road, Hounslow
Middlesex
TW4 7EA

www.urbanplanters.co.uk

